

## Gas Phase Investigation of $[(\text{Cu}^{2+}, \text{Ni}^{2+}\text{---Gly-Gly-His}) - 3\text{H}^+]^{-1}$ Complex by Electrospray Ionization MS/MS and MS/MS/MS

Bo-Ra Kim and Ho-Tae Kim\*

Department of Applied Chemistry, Kumoh National Institute of Technology, Gumi 730-701, Korea

\*E-mail: hotaekim@kumoh.ac.kr

Received January 30, 2007

**Key Words :** Gly-Gly-His, Metal<sup>2+</sup> ion, Metal-peptide complex, Mass spectrometry (MS), MS/MS

Mass spectrometry (MS) is a very useful means by which to study the interactions of metal cation-biomolecule complexes in the gas phase.<sup>1,2</sup> The analysis of the fragmentation patterns of metal cationized peptides produced under electrospray ionization (ESI)-MS can provide complementary information for peptide sequencing when the fragmentation of the protonated peptide is insufficient.<sup>3,4</sup> The specific interactions in metal ion-peptide systems have been studied to develop practical sensors for the detection and quantification of metal ions.<sup>5-7</sup>

Complexes of transition metal cations and peptides (transition metal<sup>2+</sup>--- peptide)<sup>2+</sup> have been studied by many research groups.<sup>8,9</sup> However, investigations regarding the [(Metal<sup>2+</sup>--- peptide) - 3H<sup>+</sup>]<sup>-1</sup> anion complex have not been conducted systematically using MS.<sup>7,10,11</sup> The copper and nickel binding peptide Gly-Gly-His has been investigated in aqueous solution because the peptide Gly-Gly-His mimics the form of the specific Cu<sup>2+</sup>, Ni<sup>2+</sup>-transport active site of human serum albumin.<sup>12,13</sup>

Theoretical studies concerning metal-oligopeptide structure and metal-ligand coordination geometry have also been performed through molecular dynamics simulations and *ab initio* calculations.<sup>14-17</sup> Structures, molecular orbital and stabilization energies of metal-oligopeptides are reported by the research groups.

In this study, our attention was focused on the interaction between the oligopeptide of three amino acid residues Gly-Gly-His and metal ions (Cu<sup>2+</sup>, Ni<sup>2+</sup>) in the gas phase. The interaction between the Gly-Gly-His and metal ions was studied by ESI-MS in negative mode. The fragmentation pattern of the [(Cu<sup>2+</sup>, Ni<sup>2+</sup>---Gly-Gly-His) - 3H<sup>+</sup>]<sup>-1</sup> anion complex was analyzed by MS/MS and MS/MS/MS spectra.

### Experimental Section

The gas phase [(Metal<sup>2+</sup>---Gly-Gly-His) - 3H<sup>+</sup>]<sup>-1</sup> anion complex was produced by an electrospray ionization source. The experimental MS, MS/MS and MS/MS/MS data for fragmentation pattern analysis were obtained using a Thermo Finnigan LTQ mass spectrometer (Thermo Electron Corp., San Jose, CA, USA). This mass spectrometer is a linear ion trap mass spectrometer equipped with an atmospheric pressure-ionization source.

**LTQ conditions.** All spectra were acquired in negative

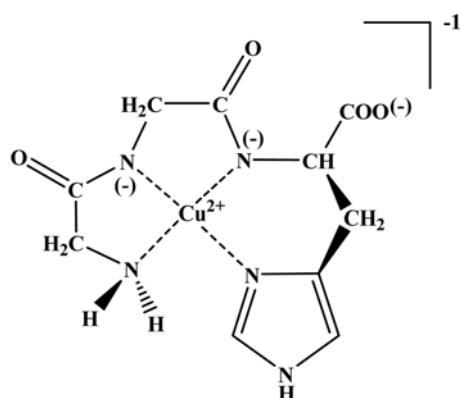
ion mode over a range of m/z 100-400 by averaging 40 scans. The heated capillary temperature was set at 200 °C to facilitate efficient complex formation. The electrospray needle voltage was set at 3.3 kV. Nitrogen was used as the sheath gas (flow 20 units) and auxiliary gas (flow 5 units) in the electrospray ionization region. The samples were introduced into the electrospray interface by a direct infusion method using a microsyringe pump (SEG, Australia) at a flow rate of 10 mL/min. The MS/MS spectra were acquired with experimental conditions of an isolation width of 1 mass unit, an activation time of 30 msec and q<sub>z</sub> = 0.25. In MS/MS mode, the parent ion molecules were manually selected one by one, and each was subjected to collision-induced dissociation (CID).

**Reagents.** Gly-Gly-His (99%, Sigma-Aldrich Korea), Cupric chloride dihydrate (99%, Sigma-Aldrich Korea), Nickel(II) nitrate hexahydrate (97%, Junsei chemical Co., Tokyo, Japan), Zinc nitrate hexahydrate (98%, Sigma-Aldrich Korea), Calcium chloride dihydrate (98%, Dae Jung chemical, Korea), and H<sub>2</sub>O (HPLC grade, Merck) were used in experiments. Gly-Gly-His was dissolved in water to prepare a 2.4 × 10<sup>-4</sup> M solution. The four metal solutions were prepared in water at a final concentration of 2.4 × 10<sup>-4</sup> M. These two solutions were mixed together prior to obtaining the mass spectra.

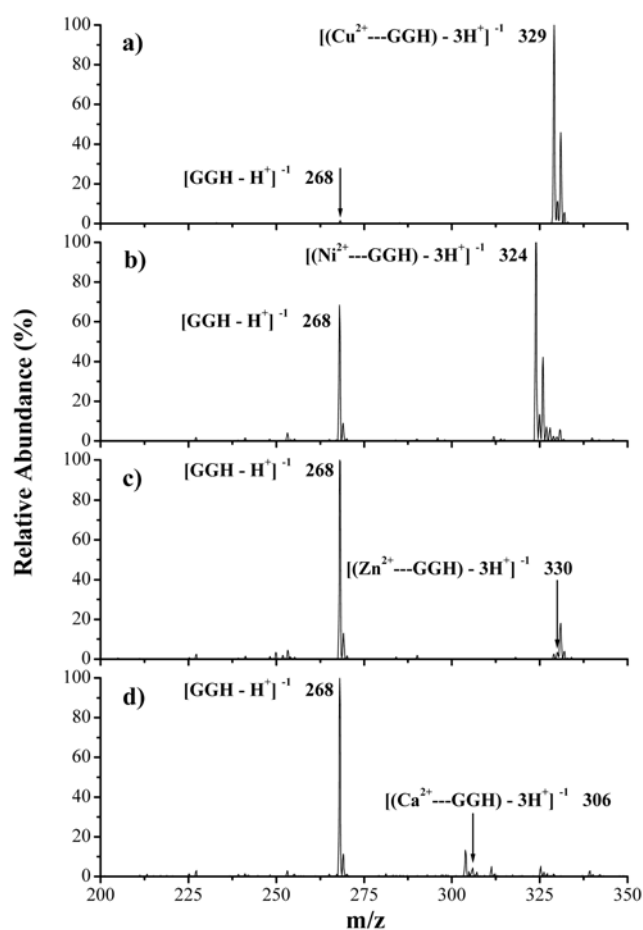
### Results and Discussion

The structural features of the [(Cu<sup>2+</sup>---Gly-Gly-His) - 3H<sup>+</sup>]<sup>-1</sup> complex in aqueous solution are shown in Figure 1.<sup>18,19</sup> The [(Cu<sup>2+</sup>---Gly-Gly-His) - 3H<sup>+</sup>]<sup>-1</sup> complex is seen to possess a planar structure involving the coordination of a terminal amino nitrogen, two deprotonated amide nitrogens, and the imidazole-N3 atom. The [(Cu<sup>2+</sup>---Gly-Gly-His) - 3H<sup>+</sup>]<sup>-1</sup> planar complex between Cu<sup>2+</sup> and four central nitrogen atoms (4 N) is known as the most stable structure in the four-coordination complex geometries.

Negative mode MS spectra of four metal ion complexes in aqueous solution are shown in Figure 2. The [(<sup>63</sup>Cu<sup>2+</sup>, <sup>58</sup>Ni<sup>2+</sup>, <sup>64</sup>Zn<sup>2+</sup>, Ca<sup>2+</sup>---Gly-Gly-His) - 3H<sup>+</sup>]<sup>-1</sup> complexes were observed at m/z 329, m/z 324, m/z 330, m/z 306 and the [(Gly-Gly-His - H<sup>+</sup>)]<sup>-1</sup> peptide ion was observed at m/z 268 (Fig. 2). The most meaningful observation gleaned from the MS spectra is that the formation efficiency of [Cu<sup>2+</sup>, Ni<sup>2+</sup>---(Gly-



**Figure 1.** Structure of  $[(\text{Cu}^{2+}\text{---Gly-Gly-His}) - 3\text{H}^+]^{-1}$  complex in aqueous solution.

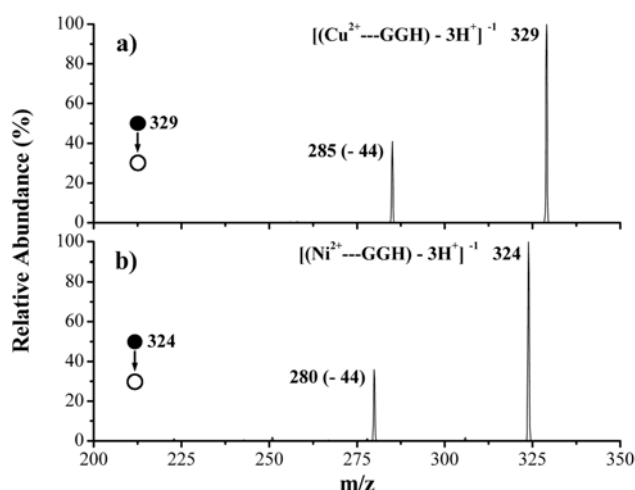


**Figure 2.** MS spectra in negative mode: (a)  $\text{Cu}^{2+}$  ion + Gly-Gly-His, (b)  $\text{Ni}^{2+}$  ion + Gly-Gly-His, (c)  $\text{Zn}^{2+}$  ion + Gly-Gly-His and (d)  $\text{Ca}^{2+}$  ion + Gly-Gly-His.

$\text{Gly-His} - 3\text{H}^+)^{-1}$  complex is much better than that of  $[\text{Zn}^{2+}, \text{Ca}^{2+}\text{---}(\text{Gly-Gly-His} - 3\text{H}^+)^{-1}]^{-1}$  complex. The more than adequate formation efficiency of the  $[\text{Cu}^{2+}, \text{Ni}^{2+}\text{---}(\text{Gly-Gly-His} - 3\text{H}^+)^{-1}]^{-1}$  complex was explained by the stabilization energy of the four-coordination planar structures in the  $[\text{Cu}^{2+}, \text{Ni}^{2+}\text{---}(\text{Gly-Gly-His} - 3\text{H}^+)^{-1}]^{-1}$  complex.<sup>15,19</sup> The reason of bad formation efficiency of the  $[\text{Zn}^{2+}\text{---}(\text{Gly-Gly-His} - 3\text{H}^+)^{-1}]^{-1}$  complex is not clear in this step. The ratios of

**Table 1.** The ratios of  $[(\text{Metal}^{2+}\text{---Gly-Gly-His}) - 3\text{H}^+]^{-1}$  peak area to  $\{[(\text{Gly-Gly-His} - \text{H}^+)^{-1}]^{-1}$  peak area +  $[(\text{Metal}^{2+}\text{---Gly-Gly-His}) - 3\text{H}^+]^{-1}$  peak area} in Figure 2

	Peak Area $[(\text{Metal}^{2+}\text{---Gly-Gly-His}) - 3\text{H}^+]^{-1}$
	Peak Area $\{[(\text{Gly-Gly-His} - \text{H}^+)^{-1}]^{-1}$ + $[(\text{Metal}^{2+}\text{---Gly-Gly-His}) - 3\text{H}^+]^{-1}\}$
$\text{Cu}^{2+}$	0.992
$\text{Ni}^{2+}$	0.689
$\text{Zn}^{2+}$	0.093
$\text{Ca}^{2+}$	0.091

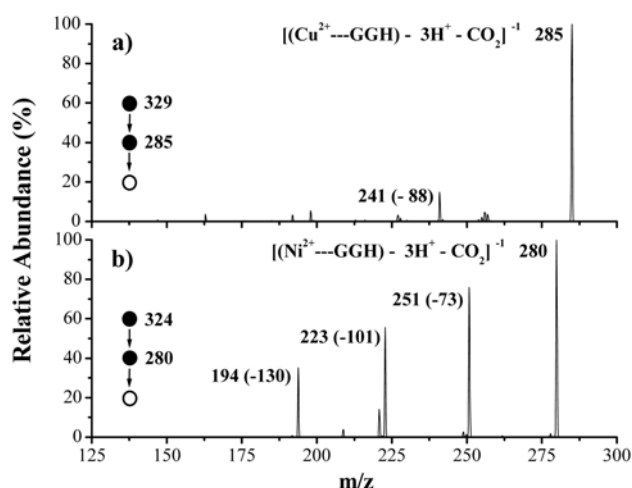


**Figure 3.** MS/MS spectra of  $[(\text{Cu}^{2+}, \text{Ni}^{2+}\text{---Gly-Gly-His}) - 3\text{H}^+]^{-1}$  complexes: (a)  $[(\text{Cu}^{2+}\text{---Gly-Gly-His}) - 3\text{H}^+]^{-1}$  complex and (b)  $[(\text{Ni}^{2+}\text{---Gly-Gly-His}) - 3\text{H}^+]^{-1}$  complex.

$[(\text{Metal}^{2+}\text{---Gly-Gly-His}) - 3\text{H}^+]^{-1}$  peak area to  $\{[(\text{Gly-Gly-His} - \text{H}^+)^{-1}]^{-1}$  peak area +  $[(\text{Metal}^{2+}\text{---Gly-Gly-His}) - 3\text{H}^+]^{-1}$  peak area} are reported in Table 1. The metal isotope peak effects are also included in the area ratios. The adequate formation efficiency of the  $[(\text{Cu}^{2+}, \text{Ni}^{2+}\text{---}(\text{Gly-Gly-His} - 3\text{H}^+)^{-1})]^{-1}$  complex could explain why the specific  $\text{Cu}^{2+}, \text{Ni}^{2+}$ -transport active site of human serum albumin is similar to Gly-Gly-His peptide.<sup>12,13</sup>

The MS/MS spectra of  $[(\text{Metal}^{2+}\text{---Gly-Gly-His}) - 3\text{H}^+]^{-1}$  complex are shown in Figure 3. The fragment ions at  $m/z$  285 in Figure 3a and at  $m/z$  280 in Figure 3b are thought to be a result of the common loss of a  $\text{CO}_2$  moiety from the  $[(\text{Cu}^{2+}, \text{Ni}^{2+}\text{---}(\text{Gly-Gly-His}) - 3\text{H}^+)^{-1}]^{-1}$  complex at the low collision activation energy. Yang *et al.* reported that the fragment ion of a 44u loss corresponds to a decarboxylation from the histidine residue.<sup>7</sup> In their previous works, the  $\text{CO}_2$ -loss fragment of  $m/z$  285 was reported as the one of several fragments of the  $[(\text{Cu}^{2+}\text{---Gly-Gly-His}) - 3\text{H}^+]^{-1}$  parent ion because of the uncontrolled collision activation energy in the anion formation MS spectrum. It is worth noting that the C- $\text{CO}_2$  bond of the  $[(\text{Cu}^{2+}, \text{Ni}^{2+}\text{---}(\text{Gly-Gly-His}) - 3\text{H}^+)^{-1}]^{-1}$  complex was found to be the weakest bond of the  $[(\text{Cu}^{2+}, \text{Ni}^{2+}\text{---}(\text{Gly-Gly-His}) - 3\text{H}^+)^{-1}]^{-1}$  complex in our low energy CID-MS/MS spectra.

The MS/MS/MS spectra of the  $\text{CO}_2$ -loss fragment that



**Figure 4.** MS/MS/MS spectra of  $[(\text{Cu}^{2+}, \text{Ni}^{2+}\text{---Gly-Gly-His}) - 3\text{H}^+ - \text{CO}_2]^{-1}$  complexes: (a)  $[(\text{Cu}^{2+}\text{---Gly-Gly-His}) - 3\text{H}^+ - \text{CO}_2]^{-1}$  complex and (b)  $[(\text{Ni}^{2+}\text{---Gly-Gly-His}) - 3\text{H}^+ - \text{CO}_2]^{-1}$  complex.

originated from the  $[(\text{Cu}^{2+}, \text{Ni}^{2+}\text{---Gly-Gly-His}) - 3\text{H}^+]^{-1}$  complex are shown in Figure 4. It is assumed that the observed fragments of  $m/z$  251,  $m/z$  223,  $m/z$  194 in Figure 4b) are the  $x_2$ ,  $y_2$  and  $x_1$  ions of the  $[(\text{Ni}^{2+}\text{---Gly-Gly-His}) - 3\text{H}^+ - \text{CO}_2]^{-1}$  complex. However, the main fragment of the  $[(\text{Cu}^{2+}\text{---Gly-Gly-His}) - 3\text{H}^+ - \text{CO}_2]^{-1}$  complex in a) was observed at  $m/z$  241. The fragment of  $m/z$  241, the ion resulting from a 44u loss from the  $[(\text{Cu}^{2+}\text{---Gly-Gly-His}) - 3\text{H}^+ - \text{CO}_2]^{-1}$  complex, is not a fragment normally obtained in the peptide dissociation in a typical MS spectrum. The additional 44u-loss could be explained by a  $\text{C}_2\text{H}_4\text{NH}_2$ , or  $\text{HCONH}$ , or  $\text{HCOCH}_3$  loss from the  $[(\text{Cu}^{2+}\text{---Gly-Gly-His}) - 3\text{H}^+ - \text{CO}_2]^{-1}$  complex. It is difficult to address the mechanism for the formation of these ions because of the lack of information in the collision-induced dissociation spectra. Further experimentation is needed for a better understanding of the fragmentation patterns in the  $[(\text{Cu}^{2+}\text{---Gly-Gly-His}) - 3\text{H}^+ - \text{CO}_2]^{-1}$  MS/MS/MS spectrum.

In summary, the adequate formation efficiency of the  $[(\text{Cu}^{2+}, \text{Ni}^{2+}\text{---Gly-Gly-His}) - 3\text{H}^+]^{-1}$  complex in the gas

phase MS spectra reflects what is also observed in the solution phase absorption spectra. The C-CO<sub>2</sub> bond is found to be the weakest bond of the  $[(\text{Cu}^{2+}, \text{Ni}^{2+}\text{---Gly-Gly-His}) - 3\text{H}^+]^{-1}$  complex in our low energy CID-MS/MS spectra. The structure of the  $[(\text{Cu}^{2+}, \text{Ni}^{2+}\text{---Gly-Gly-His}) - 3\text{H}^+]^{-1}$  complex in the gas phase was assumed to maintain the planar structure it held in the solution phase on the basis of the analysis of the MS and MS/MS spectra.

**Acknowledgements.** This paper was supported by Research Fund, Kumoh National Institute of Technology.

## References

- Rimola, A.; Sodupe, M.; Tortajada, J.; Rodríguez-Santiago, L. *Int. J. Mass. Spectrom.* **2006**, *257*, 60.
- Corral, I.; M6, O.; Y6dez, M. *Int. J. Mass. Spectrom.* **2006**, 255-256, 20.
- Chu, I. K.; Shoeib, T.; Guo, X.; Rodriquez, C. F.; Lau, T.-C.; Hopkinson, A. C.; Siu, K. W. M. *J. Am. Soc. Mass. Spectrom.* **2001**, *12*, 163.
- Chu, I. K.; Cox, D. M.; Guo, X.; Kireeva, I.; Lau, T.-C.; McDermott, J. C.; Siu, K. W. M. *Anal. Chem.* **2002**, *74*, 2072.
- Yang, W. R.; Hibbert, D. B.; Zhang, R.; Willett, G. D.; Gooding, J. J. *Langmuir* **2005**, *21*, 260.
- Yang, W. R.; Chow, E.; Willett, G. D.; Hibbert, D. B.; Gooding, J. J. *Analyst* **2003**, *128*, 712.
- Yang, W. R.; Jaramillo, D.; Gooding, J. J.; Hibbert, D. B.; Zhang, R.; Willett, G. D.; Fisher, K. J. *Chem. Commun.* **2001**, 1982.
- Bridgewater, J. D.; Lim, J.; Vachet, R. W. *Anal. Chem.* **2006**, *78*, 2432.
- Kleinnijenhuis, A. J.; Mihalca, R.; Heeren, R. M. A.; Heck, A. J. R. *Int. J. Mass. Spectrom.* **2006**, *253*, 217.
- Gooding, J. J.; Hibbert, D. B.; Tang, W. *Sensors* **2001**, *1*, 75.
- Wattenberg, A.; Barth, H.-D.; Brutschy, B. *J. Mass. Spectrom.* **1997**, *32*, 1350.
- Laussac, J.-P.; Sarkar, B. *Biochemistry* **1984**, *23*, 2832.
- Harford, C.; Sarkar, B. *Acc. Chem. Res.* **1997**, *30*, 123.
- Rokhsana, D.; Dooley, D. M.; Szilagy, R. K. *J. Am. Chem. Soc.* **2006**, *128*, 15550.
- Kim, H.-T. *Bull. Korean Chem. Soc.* **2005**, *26*, 679.
- Schwenk, C. F.; Rode, B. M. *Chem. Phys. Chem.* **2003**, *4*, 931.
- Rulíšek, L.; Havlas, Z. *J. Phys. Chem. A* **2002**, *106*, 3855.
- Kuroda, Y.; Aiba, H. *J. Am. Chem. Soc.* **1979**, *101*, 6837.
- Hay, R. W.; Hassan, M. M.; Chen, Y.-Q. *J. Inorg. Biochem.* **1993**, *52*, 17.