

This discussion paper is/has been under review for the journal *Atmospheric Chemistry and Physics (ACP)*. Please refer to the corresponding final paper in *ACP* if available.

**Study of columnar  
aerosol size  
distribution in Hong  
Kong**

X. Yang and M. Wenig

# Study of columnar aerosol size distribution in Hong Kong

**X. Yang and M. Wenig**

Laboratory for Atmospheric Research, Department of Physics and Materials Science,  
City University of Hong Kong, Hong Kong, China

Received: 27 February 2009 – Accepted: 16 March 2009 – Published: 30 March 2009

Correspondence to: X. Yang (xunyang@cityu.edu.hk)

Published by Copernicus Publications on behalf of the European Geosciences Union.

Title Page

Abstract

Introduction

Conclusions

References

Tables

Figures

⏪

⏩

◀

▶

Back

Close

Full Screen / Esc

Printer-friendly Version

Interactive Discussion

## Abstract

This paper presents studies on columnar aerosol optical properties in Hong Kong with focus on aerosol volume size distribution. Long-term ground measurements in the wet season in the years of 2002, 2003, 2004 and 2008 have been performed using a sun-sky radiometer. A bimodal size distribution is found with the fine mode centering at  $\sim 0.2 \mu\text{m}$  and coarse mode centering at  $\sim 6 \mu\text{m}$ , respectively. The fine and coarse mode have close volume concentrations of nearly 50% fraction in composing local aerosols. Intercomparison of different years shows similar aerosol properties while a small increase of fine mode aerosol could be observed. A systematic shift of size distribution parameters is observed with different atmospheric conditions, where higher aerosol loadings and Angstrom exponent correspond to more fine aerosols. The fine mode is found to be more closely correlated with this shift than the coarse mode. A higher fine mode volume fraction and smaller median fine radius correspond to a larger Angstrom exponent. The fine aerosol hygroscopic growth is one of the main mechanisms for such systematic shifting. A third mode centering at  $\sim 1\text{--}2 \mu\text{m}$  could be discovered under high aerosol loading and high fine aerosol conditions. It becomes more pronounced with high aerosol optical depth and larger Angstrom exponent. Investigation of its variation with corresponding optical parameters and correlation with atmospheric conditions indicates that it is mainly due to the fine aerosol hygroscopic growth and coagulation rather than the contribution from the coarse mode. While the very humid environment facilitates the aerosol hygroscopic growth, aerosol coagulation might further produce more large aerosols under high fine aerosol conditions. The continental outflow with transported ageing aerosols and biomass burning might have also contributed to this additional mode.

ACPD

9, 8341–8375, 2009

## Study of columnar aerosol size distribution in Hong Kong

X. Yang and M. Wenig

Title Page

Abstract

Introduction

Conclusions

References

Tables

Figures

⏪

⏩

◀

▶

Back

Close

Full Screen / Esc

Printer-friendly Version

Interactive Discussion

## 1 Introduction

Aerosols play an important role on Earth's radiation budget due to their scattering and absorbing capability and indirectly serving as the cloud nuclei. Aerosols differ in terms of their physical and chemical properties as well as their sources. Aerosol concentrations and optical properties are one of the largest uncertainties in current assessments of climate change (Intergovernmental Panel on Climate Change, 2007).

Aerosol size properties are one of the most important information for both modeling and experiments. Aerosol size information is critical for studying radiative transfer and model studies have shown its size distribution effect might overweigh some other aerosol properties like the mixing type and vertical profile (Schuster et al., 2006; Tang, 1996). Knowing aerosol size distribution is useful to distinguish anthropogenic aerosols from urban and biomass burning and natural aerosols like sea salt and dust. Such discrimination is important since their effect on the Earth's radiation budget depend on the aerosol type (Andreae, 2001) and also helps aerosol source tracing. Furthermore, the estimation of anthropogenic aerosols using satellite measurements is based on the assumption that man-made aerosols are generally from fine aerosols of small radius (submicron) while natural aerosols are usually from coarse aerosols (supermicron) (Kaufman et al., 2002, 2005). Ground measurements allow for estimation of fine and coarse aerosol volume fraction (Eck et al., 2005; Kaufman et al., 2001; Smirnov et al., 2003) as well as their respective contributions to other optical properties like the aerosol optical depth (Dubovik and King, 2000; O'Neill et al., 2003), and comparison of fine and coarse mode aerosol contributions from satellite and ground-based have been widely studied and validated (Kleidman et al., 2005). Because continuously ground-based measurements using sun-sky radiometers serves as one of the most accurate methods for studying columnar aerosol properties, networks have been built up covering worldwide sites like the Aerosol Robotic Network (AERONET) (Holben et al., 1998, 2001). The retrieval of aerosol size distribution together with aerosol optical depth (AOD) and Angstrom exponent ( $\alpha$ ) from such sun-sky radiometer measurements are

### Study of columnar aerosol size distribution in Hong Kong

X. Yang and M. Wenig

Title Page

Abstract

Introduction

Conclusions

References

Tables

Figures

⏪

⏩

◀

▶

Back

Close

Full Screen / Esc

Printer-friendly Version

Interactive Discussion

of high accuracy, whereas the retrieval of other aerosol optical parameters such as the single scattering albedo, real part and imaginary part of refractive index is with larger errors and has more restrictions like requiring a high aerosol loading (Dubovik et al., 2002; Dubovik and King, 2000).

5 The aerosol size distributions are useful indicators to investigate the aerosol's evolution process such as its hygroscopic growth, coagulation and aging. Studies of biomass burning aerosols in Africa (Eck et al., 2003b; Reid et al., 1999, 1998) and Latin America (Eck et al., 2003a; Reid et al., 1998, 1999) show a systematic shift of aerosol size distribution parameters, where increasing fine aerosol volume fractions and shift in median aerosol radius under higher aerosol loadings are found. The aerosol aging and hygroscopic growth are considered as possible causes. The size distribution of urban-industrial aerosols shows the appearance of an additional third mode between and fine and coarse modes, which is considered as the consequence of aerosol hygroscopic growth under heavy loading and humid conditions (Dubovik et al., 2002; Singh et al., 15 2004). The aerosol size distributions vary under different atmospheric conditions like a light or heavy aerosol loading. The aerosol size distributions under the predominately fine or coarse particles conditions have been studied using the Angstrom exponent as discrimination, where a large Angstrom exponent indicates more fine aerosol events (Eck et al., 2008; Kaufman et al., 2001; Smirnov et al., 2003). The variation of aerosol size distribution under different aerosol loadings discriminated by aerosol optical depth 20 has been studied at urban (Dubovik et al., 2002), desert (Eck et al., 2005), forest (Schafer et al., 2008) and coastal (Smirnov et al., 2003) sites.

Hong Kong is a coastal city located in the Pearl River Delta region, one of the largest urban-industrial regions of China (Fig. 1). The Pearl River Delta Region has a total land area of 42 794 km<sup>2</sup> with a population of over 50 million (Hong Kong, ~1100 km<sup>2</sup>, 6.8 million). Whatever measurements are taken, the industrial pollutions and anthropogenic aerosols seem to increase in recent years. However, the local aerosol constituents and their sources have not yet been thoroughly understood mainly due to Hong Kong's special geographical location and complex atmospheric conditions. In addition to local 25

---

## Study of columnar aerosol size distribution in Hong Kong

X. Yang and M. Wenig

---

[Title Page](#)[Abstract](#)[Introduction](#)[Conclusions](#)[References](#)[Tables](#)[Figures](#)[⏪](#)[⏩](#)[◀](#)[▶](#)[Back](#)[Close](#)[Full Screen / Esc](#)[Printer-friendly Version](#)[Interactive Discussion](#)

emissions, both the continental outflow and the South China Sea affect local environment. Cooperative campaigns and local measurements demonstrate the influence of continental outflows on local air conditions (Huebert et al., 2003; Wang et al., 2003). Organic and fine aerosols like the PM<sub>2.5</sub> are found to be of high concentrations, indicating local anthropogenic emissions and continental outflows (Cohen et al., 2004). The biomass burning aerosols from the mainland and Southeast Asia countries also have an impact on the local environment (Chan et al., 2003, 2000; Heald et al., 2003). The maritime aerosols like the sea salt is also found to have a high fraction in composing the ambient particulates (Cohen et al., 2004; Zheng et al., 2008). The oceanic environment especially the monsoon from the ocean in summer and fall result in high humidity in Hong Kong. Such humid environment could facilitate the aerosol evolution process through hygroscopic growth as have been found in many industrial and coastal areas (Dubovik et al., 2002; Eck et al., 2003b; Reid et al., 1999; Singh et al., 2004). In this paper, we present the long-term observation results of aerosol optical properties with focus on its size properties. We analyze aerosol's size distribution, variation and the underlying mechanism.

## 2 Data and inversion algorithm

### 2.1 Instrument and site

A sun-sky radiometer has been installed in the main campus of City University of Hong Kong (CityU, 22.34° N, 114.17° E) locating in the urban center of Hong Kong. We use a POM-01 sun-sky radiometer, which has been widely used for measuring atmospheric aerosols (Carmine et al., 2005; Kaufman et al., 1994; Kim et al., 2004; Nakajima et al., 2003). It consists of a sun-sky spectral radiometer, a sun sensor, a sun-tracking unit and a PC for data logging. It has seven spectral channels with centered wavelengths at 315, 400, 500, 675, 870, 940, and 1020 nm, respectively. The filter's half-bandwidth is 3 nm for the 315 wavelength and less than 10 nm for the other wavelengths. The

## Study of columnar aerosol size distribution in Hong Kong

X. Yang and M. Wenig

Title Page

Abstract

Introduction

Conclusions

References

Tables

Figures

◀

▶

◀

▶

Back

Close

Full Screen / Esc

Printer-friendly Version

Interactive Discussion

315 and 940 nm channels are used for deriving the ozone concentration and precipitable water column amounts, respectively, while the other five wavelengths are used for measuring aerosols.

The sun-sky radiometer starts measurements by tracking the sun position and measuring direct and diffuse solar radiance by scanning in either of two modes, the almucantar and principle scanning. The almucantar scanning is changing the almucantar angle from  $0^\circ$  to  $180^\circ$  on the right or left sides with respect to the sun position when the zenith angle remains the same, while the principle scanning is rotating the zenith angle with fixed almucantar angle. When zenith angle is smaller than  $15^\circ$ , the principal scanning is performed, otherwise the almucantar scanning is taken. The sky radiometer starts running every day when the air mass is larger than 3. The measurement interval is typically 10 min. More details about the instrument and working principle can be found in papers by Nakajima et al. (1996) and Tonna et al. (1995).

The sky radiometer commenced running in 2002 and continued measurements till early 2005. Afterwards the measurements were interrupted due to maintenance. It was reinstalled in the site in June 2008 and has been taking measurements from July after nearly one-month setting and adjusting. For intercomparison, the data presented here are from July to November in the years of 2002, 2003, 2004 and 2008. It is the most humid season of a year with relative humidity higher than 70%. The local meteorological conditions at this period are greatly affected by the southerly monsoon usually in June and July and the north-easterly monsoon from August to November.

## 2.2 Data inversion

The data inversion is implemented using the algorithm based on a multiple scattering radiation transfer model, where the atmosphere is assumed to be two parallel planes (Nakajima et al., 1996; Boi et al., 1999). The retrieved aerosol optical properties include the aerosol optical depth, size distribution, Angstrom coefficient, single scattering albedo, refractive index and phase function (Carminie et al., 2005; Kaufman et al., 1994). An important feature of the inversion algorithm is that an improved Langley plot

### Study of columnar aerosol size distribution in Hong Kong

X. Yang and M. Wenig

Title Page

Abstract

Introduction

Conclusions

References

Tables

Figures

⏪

⏩

◀

▶

Back

Close

Full Screen / Esc

Printer-friendly Version

Interactive Discussion



---

**Study of columnar aerosol size distribution in Hong Kong**X. Yang and M. Wenig

---

[Title Page](#)[Abstract](#)[Introduction](#)[Conclusions](#)[References](#)[Tables](#)[Figures](#)[⏪](#)[⏩](#)[◀](#)[▶](#)[Back](#)[Close](#)[Full Screen / Esc](#)[Printer-friendly Version](#)[Interactive Discussion](#)

method has been used to calculate the instrumental calibration constant  $V_0$  (Boi et al., 1999; Campanelli et al., 2007; Nakajima et al., 1996) in the equation,  $V = V_0 \exp(-m_0 \tau)$ , where  $V$ ,  $m_0$  and  $\tau$  represent the measured radiance, air mass factor and optical depth, respectively. In the normal Langley method, the calibration constant is obtained by performing a logarithmic plot of the air mass versus measured direct solar radiation when assuming that the aerosol optical depth remains the same during the whole measurement process. However, this assumption rarely exists. The improved Langley plot method in the inversion algorithm is making use of diffuse radiation and running the inversion procedure to estimate the aerosol optical depth. Then the estimated aerosol optical depth is used in the Langley plot for calculating the calibration constant. The calibration constant for each year has been calculated separately. Figure 2 shows the comparison of the two methods for data of 2008.

A 5% threshold is set for the inversion that requires the reconstructed radiance from inversion has a maximum 5% uncertainty with the measured radiance, which come from the improved Langley plot method and the inversion algorithm, respectively. Hong Kong is quite cloudy and the monthly average cloud amount in this season of the year is ~64% according to the Hong Kong Observatory records. This has a significant impact on the retrieval process and has to be considered when interpreting results. Therefore a cloud screening procedure used in the AERONET (Smirnov et al., 2000) has been applied. It checks the stability of aerosol optical depth and identifies those extensive temporal variations as cloud contamination. Furthermore, a minimum measurement number for a specific almucantar scanning range is required in AERONET inversion for data qualification. Therefore we only use data with at least 1 measurement in each of the scattering angle interval,  $3^\circ$ – $10^\circ$ ,  $10^\circ$ – $30^\circ$ ,  $30^\circ$ – $80^\circ$  and larger than  $80^\circ$ , respectively. Concerning the retrieved aerosol size distribution, the error for small and large radius range is usually larger than that at the middle radius range (Dubovik et al., 2002). To filter out anomaly data with extremely high volume values for size distribution at small radius ( $r < 0.03 \mu\text{m}$ ) and large radius ( $r > 7 \mu\text{m}$ ), a threshold is added that requires the mean volume values at the two ranges to be smaller than the mean value of the whole

size distribution spectra. The experimental data show that the values for normal size distribution are usually with the maximum value smaller than  $0.1 \mu\text{m}^3 \mu\text{m}^{-2}$ , therefore those anomaly ones with absolute values 100 times larger (exceeding  $10 \mu\text{m}^3 \mu\text{m}^{-2}$ ) are filtered out. Those outliers are typically caused by cloud contamination.

## 3 Results

### 3.1 Intercomparison with MODIS and AERONET

Figure 3 shows the retrieved aerosol optical depth from the CityU sun-sky radiometer in comparison with AODs from the Moderate Resolution Imaging Spectroradiometer (MODIS) launched aboard Terra (in the late 1999) and Aqua (in the early 2002) (Kaufman et al., 1997; Remer et al., 2005). With 36-wavelength channels and a orbit height of  $\sim 700$  km, MODIS provides global aerosol distribution information like the aerosol optical depth. The latest version 5 data collection (C005) (Levy et al., 2007) in Level 2 products have been used for comparison. It is granule-based dataset of 5-minute segment,  $10 \times 10$  km pixel and  $0.5^\circ \times 0.5^\circ$  scale (Chu et al., 2003; Ichoku et al., 2002; Remer et al., 2005)

For the comparison, we use the MODIS AODs of Terra at 550 nm wavelength from C005 collection. Terra passes through Hong Kong at  $\sim 11$  a.m. local time. The mean AOD from a  $50 \times 50$  km scanning region with center close to CityU campus has been used. In order to increase the number of intercomparison dataset, we use the daily mean AODs from the sun-sky radiometer to coincide with the MODIS AODs in the same day instead of using a shorter time interval centered at the satellite overpass. There are a total of 153 coinciding days. The AODs at 500 nm wavelength from the sun-sky radiometer have been converted to AODs at 550 nm wavelength using Angstrom exponent calculated at 400–870 nm. The Angstrom exponent is calculated by a linear least squares fitting of the Angstrom equation from 400 to 870 nm wavelengths, where  $\alpha$  is the Angstrom exponent and  $\tau_a(\lambda)$  denotes the aerosol optical depth at wavelength  $\lambda$

## Study of columnar aerosol size distribution in Hong Kong

X. Yang and M. Wenig

Title Page

Abstract

Introduction

Conclusions

References

Tables

Figures

⏪

⏩

◀

▶

Back

Close

Full Screen / Esc

Printer-friendly Version

Interactive Discussion



(Angstrom, 1929). The two AODs have a total least squares linear regression relationship as,  $AOD_{MODIS} = AOD_{HK} \times 0.92 - 0.01$ , and a correlation coefficient  $R$  of 0.86. The single pixel AOD closet to the measuring site has also been investigated. The linear regression of single-pixel and mean-pixel AODs has a slope of 0.91, indicating larger AOD values from the single-pixel, which is close to CityU site.

Figure 4 shows the comparison of retrieved aerosol size distributions from CityU and a local AERONET site. The local AERONET site is located at Polytechnic University of Hong Kong (PolyU), which is  $\sim 13$  km away in the south and is also located in the urban area. The data from AERONET are the level 1.5 retrieval data after applying the cloud screening procedure mentioned above. The size distributions are averaged from daily mean size distributions from total 22 coinciding days in October and November of 2008. The local AERONET site provides data from late 2005 and there are only size distribution data from October in 2008. The difference of the two retrieved size distributions is due to the instrument, criteria for data qualification, the inversion algorithm and the site's atmospheric conditions. The sun-sky radiometer in AERONET is a Cimel radiometer. For almucantar scanning, it takes three measurements at each scattering angle to restrict temporarily atmospheric variation due to clouds or plumes. Before applying the data inversion, a more restricted criterion is used in AERONET. For instance, the minimum measurement number are 2, 5, 4 and 3 for scattering angle bins of  $3.2^\circ - 6.0^\circ$ ,  $6.0^\circ - 30^\circ$ ,  $30^\circ - 80^\circ$  and larger than  $80^\circ$ , respectively (Dubovik et al., 2002). Therefore there are a more limited number of retrieved data from AERONET. The daily average data numbers of AERONET in Fig. 4 is 3, while the actual daily average measurement numbers are 20 according to the measured AOD numbers. Actually most of the measurement data are filtered out without retrieving aerosol optical properties like the size distribution. Thus we use a slightly lower filtering threshold as mentioned above so that more data can be analyzed. Concerning the inversion algorithm difference, studies have shown general agreement (Highwood et al., 2003). The different site locations result in difference mainly due to the different cloud influence, therefore the daily average size distributions are not from the exact data at the same

## Study of columnar aerosol size distribution in Hong Kong

X. Yang and M. Wenig

Title Page

Abstract

Introduction

Conclusions

References

Tables

Figures

⏪

⏩

◀

▶

Back

Close

Full Screen / Esc

Printer-friendly Version

Interactive Discussion

hour or minute after cloud screening. The Hong Kong's high cloud amount further enhances such difference. With consideration to all of these factors, the intercomparison of the two size distribution agrees well with each other. Concerning the uncertainties, the middle range ( $0.1 \leq r \leq 7 \mu\text{m}$ ) of aerosol size distribution is generally with less uncertainty than the edges ( $0.05 \leq r \leq 0.1 \mu\text{m}$  and  $7 \leq r \leq 15 \mu\text{m}$ ), i.e., the retrieval errors might rise up to 80% to 100% at the edges, while it does not exceed 10% in the maxima and might rise up to 35% for the minima in the middle range (Dubovik et al., 2002; Dubovik and King, 2000).

### 3.2 Annual size distribution and corresponding aerosol optical properties

The annual mean aerosol volume size distributions of each year are shown in Fig. 5. There are 75, 86, 104 and 55 days for each year. A bimodal structure is observed. The fine and coarse modes can be separated by a radius value of  $\sim 0.6 \mu\text{m}$ . The bimodal lognormal structure of aerosol size distribution has been found worldwide and can be described by

$$\frac{dV(r)}{d \ln r} = \sum_{i=1}^2 \frac{C_{V,i}}{\sqrt{2\pi}\sigma_i} \exp \left[ -\frac{(\ln r - \ln r_{V,i})^2}{2\sigma_i^2} \right] \quad (1)$$

where  $C_V$  is the volume concentrations,  $r_V$  is the volume median size and  $\sigma$  is the geometric standard deviation, and they can be calculated by the following equations:

$$\ln r_V = \frac{\int_{r_{\min}}^{r_{\max}} \ln r \frac{dV(r)}{d \ln r} d \ln r}{\int_{r_{\min}}^{r_{\max}} \frac{dV(r)}{d \ln r} d \ln r} \quad (2)$$

$$\sigma_V = \sqrt{\frac{\int_{r_{\min}}^{r_{\max}} (\ln r - \ln r_V)^2 \frac{dV(r)}{d \ln r} d \ln r}{\int_{r_{\min}}^{r_{\max}} \frac{dV(r)}{d \ln r} d \ln r}} \quad (3)$$

## Study of columnar aerosol size distribution in Hong Kong

X. Yang and M. Wenig

Title Page

Abstract

Introduction

Conclusions

References

Tables

Figures

⏪

⏩

◀

▶

Back

Close

Full Screen / Esc

Printer-friendly Version

Interactive Discussion

$$C_V = \int_{r_{\min}}^{r_{\max}} \frac{dV(r)}{d \ln r} d \ln r \quad (4)$$

Where  $r_{\min}$  and  $r_{\max}$  denote the radius ranges for corresponding modes. Dubovik et al. (2002) studied the worldwide aerosol size distribution from different AERONET sites and used the boundary radius  $0.6 \mu\text{m}$  for discriminating the fine and coarse modes. Investigation of aerosols in central eastern Asia also shows bimodal size distribution and the value  $0.6 \mu\text{m}$  is used to separate fine and coarse mode (Eck et al., 2005). The urban-industrial aerosols in northern India is also characterized by the fine and coarse modes with  $0.6 \mu\text{m}$  as the boundary radius (Singh et al., 2004). A more detailed description of the size distribution information as well as other aerosol optical properties is presented in Table 1, where the volume median radii, volume concentrations, geometric standard deviations for fine, coarse and the whole modes are symbolized by  $C_f$ ,  $C_c$  and  $C_V$ ,  $r_f$ ,  $r_c$  and  $r_V$ ,  $\sigma_f$ ,  $\sigma_c$  and  $\sigma_V$ , respectively.

The bimodal size distribution in Hong Kong has more or less the same volume fraction for the fine and coarse modes. The annual average fine mode volume fraction is a little bit smaller and close to 50%. The fine mode fraction increases gradually from 45.61% to 49.17% in the four years. The median radius decrease from  $0.84 \mu\text{m}$  to  $0.75 \mu\text{m}$  from 2002 to 2008. All of the aerosol volume concentrations including the fine, coarse and the whole mode have the largest values,  $0.096$ ,  $0.103$  and  $0.198 \mu\text{m}^3 \mu\text{m}^{-2}$  in 2004 and the smallest values,  $0.072$ ,  $0.085$  and  $0.157 \mu\text{m}^3 \mu\text{m}^{-2}$  in 2003. Correspondingly, the maximum and minimum annual AODs are found to be  $0.71$  in 2004 and  $0.52$  in 2003. The fine mode fraction is higher than those found in remote coastal sites ( $\sim 20\text{--}30\%$ ), where maritime aerosol dominates and urban-industrial aerosols have less influence (Smirnov et al., 2003). It is a little lower than the biomass burning aerosols found in Zambia ( $\sim 57\%$ ) and close to those urban-industrial types found in Mexico City (Dubovik et al., 2002).

Figure 6 shows the frequency distribution information of the annual aerosol size distributions. The radius bin intervals of frequency distributions for the fine, coarse and the whole spectra are  $0.02$ ,  $0.3$  and  $0.2 \mu\text{m}$ , respectively. The bin interval of fine mode

## Study of columnar aerosol size distribution in Hong Kong

X. Yang and M. Wenig

Title Page

Abstract

Introduction

Conclusions

References

Tables

Figures

⏪

⏩

◀

▶

Back

Close

Full Screen / Esc

Printer-friendly Version

Interactive Discussion



fraction is 0.05. Both the fine and coarse median radiuses show a skewed normal distribution with peak values occurring towards the larger radius. The modal values of median radius are around 0.2, 3 and 0.6  $\mu\text{m}$  for the fine, coarse and the whole modes, respectively. The percentages of fine mode fraction larger than 0.5 are 61%, 61%, 70% and 54% for each year, respectively, showing that the fine aerosols dominate in local atmosphere. The wide geometric standard deviation of fine mode fraction implies the large local atmospheric aerosol variation.

The frequency distributions of AOD and Angstrom exponent are shown in Figs. 8 and 9, respectively. The bin intervals for the AOD and Angstrom exponent are 0.2 and 0.1, respectively. It is found that the aerosol optical depth can be better characterized using a lognormal distribution (O'Neill et al., 2000). Our data confirms this point. When using a linear scale, the frequency distributions of AODs are generally unimodal like some other urban-industrial aerosols (Singh et al., 2004) rather than bimodal. The modal values are  $\sim 0.3$ . The occurrence of high aerosol loading with  $\text{AOD} > 0.7$  are 0.34, 0.34, 0.58 and 0.21 for each year, respectively, and the annual average highest AODs and aerosol volume concentrations are found in 2004. The Angstrom exponents have modal values of  $\sim 0.5$ . It is skewed towards high Angstrom exponent, indicating the more fine aerosols. The Angstrom exponent has a relatively large width with the geometric standard deviations of  $\sim 0.2$  with a modal value larger than 1, which is larger than those predominately coarse aerosols coastal regions (Smirnov et al., 2002). It indicates the Angstrom exponent has a dependence on the spectral AODs rather than has a neutral relationship. Because coarse aerosols scatter and absorb less than fine aerosols, a predominately coarse aerosol environment would have the Angstrom exponent less dependent on the AOD channel range. This indicates fine aerosols play an important role in local environment.

### 3.3 Size distribution under different atmospheric conditions

Aerosol has a lifetime or around 5–10 days in the atmosphere and its physical and chemical properties would change with time. However, its evolution process and

## Study of columnar aerosol size distribution in Hong Kong

X. Yang and M. Wenig

Title Page

Abstract

Introduction

Conclusions

References

Tables

Figures

⏪

⏩

◀

▶

Back

Close

Full Screen / Esc

Printer-friendly Version

Interactive Discussion



mechanism are not clearly understood. Therefore much attention has been focused on studying aerosol properties on different conditions like its size distribution evolution under different loadings to investigate aerosol evolution processes such as the aerosol hygroscopic growth, coagulation and ageing. Schafer et al. (2008) examined the Amazon aerosol size distributions under different aerosol optical depth and found decreasing coarse aerosols with increasing optical depth. Eck et al. (2005) studied the size distributions under different aerosol optical depths in eastern Asia, and found a systematic shift of aerosol size distribution including the volume fraction, median radius and width, which is partially attributed to aerosol hygroscopic growth. The predominately fine and coarse events at different sites of Arabia Gulf were investigated (Eck et al., 2008), where larger fine mode median radius is found under heavy pollution days with higher aerosol loading and larger Angstrom exponent. By comparing the inland and desert sites the cause is attributed to aerosol hygroscopic growth under more humidity marine environment.

Figure 9 shows the size distributions under different aerosol loadings for each year with AODs bins of 0–0.4, 0.4–0.7, 0.7–1.1 and 1.1–10. The average measurement numbers are larger than 30 for each bin. For further discrimination, two different Angstrom exponents ranges are used to represent the predominately fine ( $\alpha > 1.4$ , upper plots) and more coarse mode ( $\alpha < 1.4$ , lower plots) conditions. It should be denoted that the fine mode aerosol contributes a large fraction for both cases ( $\alpha < 1.4$  and  $\alpha > 1.4$ ), indicating high fine aerosols in the local atmosphere. Using two Angstrom exponent ranges, the whole data can be utilized and there are sufficient qualified data numbers for the two cases since 1.4 is close to the median value according to the frequency occurrence distribution of Angstrom exponent. In fact, Angstrom exponent has been widely used to discriminate fine and coarse aerosols, where a predominately fine aerosol size distribution like urban pollution and biomass burnings generally corresponds to a high Angstrom exponent, while more coarse aerosols like sea salt and dust accompanies with a low Angstrom exponent. Eck et al. (2008) studied the desert aerosol size distribution and discriminate the fine and coarse dominated events using

---

## Study of columnar aerosol size distribution in Hong Kong

X. Yang and M. Wenig

---

[Title Page](#)[Abstract](#)[Introduction](#)[Conclusions](#)[References](#)[Tables](#)[Figures](#)[⏪](#)[⏩](#)[◀](#)[▶](#)[Back](#)[Close](#)[Full Screen / Esc](#)[Printer-friendly Version](#)[Interactive Discussion](#)

$\alpha > 0.7$  and  $\alpha < 0.7$ , respectively. The fine or background maritime aerosol size distribution is investigated by Smirnov et al. (2003) using  $\alpha < 1$  as the threshold, while Kaufman et al. (2001) found the baseline/background maritime aerosols are with a small Angstrom exponent ranging from 0.77 to 1.1 over oceans.

When the Angstrom exponent is larger than 1.4 as shown in Fig. 9a, the predominately fine mode is more pronounced in comparison to Fig. 9b with  $\alpha < 1.4$ . As the AODs increase, both the fine and coarse aerosol concentrations go up. The fine mode fraction is found to have an increasing trend with AODs increasing, therefore the absolute fine mode volume increments is larger than that of the coarse mode. It implies the increasing of AODs is mainly due to the fine mode. For instance, the fine fraction in 2002 increases from 49% to 63% when  $\alpha > 1.4$ . When  $\alpha < 1.4$ , the fine mode fraction in the same year of 2002 increases from 37% to 56%. The absolute fine mode fraction is larger under larger Angstrom exponent. Under low aerosol loadings or clean atmospheric conditions ( $0 < \text{AOD} < 0.4$ ), both the fine and coarse modes are of low concentrations less than  $0.5 \mu\text{m}^3 \mu\text{m}^{-2}$ , with a small fine mode fraction. The aerosol size distributions under low aerosol loading conditions resemble the background maritime aerosols found by others (Kaufman et al., 2001; Smirnov et al., 2000, 2003, e.g.). The aerosol median radius and geometric standard deviation vary with AODs, but no obviously trend is found. The intercomparison between different years does not show significant difference.

When the aerosol loadings are higher, e.g., AOD exceeding 1, a third mode appears with its peak centering at  $\sim 1\text{--}2 \mu\text{m}$  between the fine and coarse modes. It is more significant for predominately fine aerosols with  $\alpha > 1.4$  than high coarse aerosol conditions with  $\alpha < 1.4$ . Furthermore, it becomes more pronounced with higher aerosol concentrations as AODs increases. It implies that the third mode has a dependence on high aerosol loadings especially fine aerosols. This phenomenon has been observed by others. Singh et al. (2004) studied the aerosols in an industrial city in India and found a similar middle mode  $\sim 1\text{--}2 \mu\text{m}$  which is attributed to the hygroscopic growth of finer aerosols. Dubovik et al. (2002) studied aerosols in worldwide sites and found the

## Study of columnar aerosol size distribution in Hong Kong

X. Yang and M. Wenig

Title Page

Abstract

Introduction

Conclusions

References

Tables

Figures

◀

▶

◀

▶

Back

Close

Full Screen / Esc

Printer-friendly Version

Interactive Discussion

---

**Study of columnar  
aerosol size  
distribution in Hong  
Kong**

---

X. Yang and M. Wenig

---

[Title Page](#)[Abstract](#)[Introduction](#)[Conclusions](#)[References](#)[Tables](#)[Figures](#)[⏪](#)[⏩](#)[◀](#)[▶](#)[Back](#)[Close](#)[Full Screen / Esc](#)[Printer-friendly Version](#)[Interactive Discussion](#)

growth of fine mode aerosol median radius with increasing optical depth. The aerosol hygroscopic growth was attributed as one of the most important mechanisms, and some other processes like the aerosol coagulation and aging process were also considered as possible reasons. Studies of the biomass burning aerosols in Africa (Eck et al., 2001, 2003b) and Brazil (Eck et al., 2003a; Reid et al., 1998, 1999) also show such radius increase of fine aerosol, where the aerosol ageing, hygroscopic growth and mixing with urban aerosols have been considered as possible causes.

The average relative humidity in Hong Kong from July to November is usually higher than 70%. The humid environment is likely to facilitate the aerosol hygroscopic growth and coagulation especially under high aerosol loadings. The pronounced organic aerosol increasing in the 0.49 to 2.5  $\mu\text{m}$  range has been found in September and October when the atmospheric environment is very humid (Zheng et al., 2008). Furthermore, the local atmospheric conditions are impacted by the continental industrial outflow from the mainland of China (Cheng et al., 2006; Wang et al., 2003). The urban-industrial aerosol and its ageing during the transport could have contributed to such phenomenon. The biomass burning aerosols from the continental outflow also have an impact on Hong Kong (Chan et al., 2000, 2003; Heald et al., 2003). Overall, the hygroscopic growth of urban-industrial aerosols and coagulation are the main causes for the appearance of the third mode considering the prevailing southern and eastern monsoon in this period, when the impact of biomass burning is relatively weak compared to other seasons.

Figure 10 shows the size distributions of different Angstrom exponents under two aerosol loadings, light ( $\text{AOD} < 0.5$ ) in the upper plot and heavy ( $\text{AOD} > 0.5$ ) in the lower plot, respectively. There are at least 30 measurements for each bin. A systematic trend of aerosol size distribution parameters shifting with the Angstrom exponent is observed under both low and high aerosol loading conditions. The fine mode fraction and geometric standard deviation increase with the  $\alpha$  increasing, while the median radius decreases with higher  $\alpha$ . For instance, when  $\text{AOD} > 0.5$  in 2008 the fine mode fraction and geometric standard deviation increasing from 52.76% to 57.61% and 1.34

---

**Study of columnar aerosol size distribution in Hong Kong**X. Yang and M. Wenig

---

[Title Page](#)[Abstract](#)[Introduction](#)[Conclusions](#)[References](#)[Tables](#)[Figures](#)[⏪](#)[⏩](#)[◀](#)[▶](#)[Back](#)[Close](#)[Full Screen / Esc](#)[Printer-friendly Version](#)[Interactive Discussion](#)

to 1.53  $\mu\text{m}$ , respectively with  $\alpha$  increasing, while the median radius decreases from 0.67 to 0.59  $\mu\text{m}$ . Reid et al. (1998) also found the increasing of geometric standard deviation with decreasing median radius when studying the biomass burning aerosol in Brazil. When further examining the fine and coarse mode, respectively, it is found that the fine mode median radius shifts to smaller size while coarse mode median radius increases slightly when  $\alpha$  increases. Their geometric standard deviations do not have an obvious trend.

The systematic shift shows the close correlation of Angstrom exponent with the aerosol size distribution especially the fine mode. The bimodal aerosol size distribution is closely correlated to the Angstrom exponent (Kaufman, 1993; O'Neill et al., 2001, 2003). The fine mode has impact on the Angstrom exponent, where larger fine mode fraction and smaller fine mode median size tends to correspond to a high Angstrom exponent (Schuster et al., 2006). The results shown here agree well with those works. This is mainly due to the physical mechanism that fine aerosols interact more with visible wavelength while coarse aerosols have much more impact on the near infrared wavelength. Therefore the increasing of fine aerosols results in more scattering and absorption especially in the short wavelength channels and lead to higher Angstrom exponent. Furthermore, the sea salt contributing greatly to local coarse aerosols causes weaker interacting with longer wavelength channels than other coarse dusts due to its weak absorbing ability. Therefore, variation of coarse mode has less effect on scattering and absorbing light and therefore less lead to less changing to the Angstrom exponent compared to the fine aerosols.

The main difference between low and high aerosol loadings are that under the high aerosol loading condition ( $\text{AOD}>0.5$ ), the fine fraction is higher with larger median radius, compared to the low aerosol loadings ( $\text{AOD}<0.5$ ). For instance, the 2004 has the fine fraction, geometric standard deviation and median radius ranging 50.42–62.22%, 1.26–1.54  $\mu\text{m}$  and 0.52–0.75  $\mu\text{m}$ , respectively when  $\text{AOD}>0.5$ , while they are 28.85–56.37%, 1.30–1.58  $\mu\text{m}$  and 0.56–1.29  $\mu\text{m}$ , respectively with  $\text{AOD}<0.5$ . The absolute variation of those parameters is smaller under high AOD condition. Com-



---

**Study of columnar aerosol size distribution in Hong Kong**

---

X. Yang and M. Wenig

---

[Title Page](#)[Abstract](#)[Introduction](#)[Conclusions](#)[References](#)[Tables](#)[Figures](#)[⏪](#)[⏩](#)[◀](#)[▶](#)[Back](#)[Close](#)[Full Screen / Esc](#)[Printer-friendly Version](#)[Interactive Discussion](#)

paring Fig. 10a and b, it is observed that under high aerosol loadings ( $AOD > 0.5$ ) the absolute fine mode concentrations remains more or less the same with increasing  $\alpha$ , while the coarse mode concentration increase more significantly. Under low aerosol loading ( $AOD < 0.5$ ), the fine mode decreases significantly as  $\alpha$  increases with increasing coarse mode. For instance, the fine fractions are 52.76%, 52.90%, 58.57% and 57.61% as the AOD bin increases when  $AOD > 0.5$ , while they increase as 34.46%, 41.96%, 53.42% and 62.95% when  $AOD > 0.5$ .

The third mode is more pronounced with higher Angstrom exponent under high AODs. It is not significant under low AODs although the coarse mode has a higher fraction. For instance, the coarse mode is smaller than  $0.04 \mu\text{m}^3 \mu\text{m}^{-2}$  when  $AOD < 0.04$  in 2004, while the third mode exceeds  $0.05 \mu\text{m}^3 \mu\text{m}^{-2}$  when  $AOD > 0.4$  in the same year. The occurrence of the third mode seems to have a dependence on enough fine aerosols. On the other hand, when  $AOD < 0.04$  the increments of coarse aerosols with decreasing Angstrom exponent are mainly those coarse aerosols with radius ( $r > 3 \mu\text{m}$ ) larger than the third mode ( $1\text{--}2 \mu\text{m}$ ). It indicates in another way that the third mode does not depend on the coarse aerosol increment and helps correctly understand the aerosol composition since some accumulation sea salt is also described as having a radius  $\sim 1\text{--}2 \mu\text{m}$  (Hess et al., 1998).

#### 4 Conclusions

Long-term observations of columnar aerosols in Hong Kong have been performed using a sun-sky radiometer. The study focuses on investigation of the aerosol size distribution. A bimodal structure of local aerosol size distribution is found. The fine mode generally has a radius range from 0.01 to  $0.6 \mu\text{m}$  with a median volume radius of  $\sim 0.2 \mu\text{m}$ , and the coarse mode locates from 0.6 to  $16 \mu\text{m}$  with a median radius of  $\sim 2.7 \mu\text{m}$ . They contribute more or less the same volume fraction. The annual average Angstrom exponent is  $\sim 1.3$  with average AOD 0.6. It indicates both fine aerosols from local emission or continental transport and coarse aerosols like sea salt from the

---

**Study of columnar aerosol size distribution in Hong Kong**

---

X. Yang and M. Wenig

---

[Title Page](#)[Abstract](#)[Introduction](#)[Conclusions](#)[References](#)[Tables](#)[Figures](#)[⏪](#)[⏩](#)[◀](#)[▶](#)[Back](#)[Close](#)[Full Screen / Esc](#)[Printer-friendly Version](#)[Interactive Discussion](#)

ocean play an important role in composing atmospheric aerosols in Hong Kong. The frequency distributions of fine mode fraction and Angstrom exponent skews towards high values, indicating more fine aerosols. Intercomparison of those aerosol parameters in different years show no significant trend, but a moderate increasing of fine fraction could be observed. The local aerosol size distribution resembles those found in some other urban-industrial areas and those of a coastal environment.

The variation of aerosol size distribution under different atmospheric conditions has been investigated. A systematic shift of size distribution parameters is found under different aerosol loadings and Angstrom exponents. High aerosol loading and large Angstrom exponent tends to coincide with more fine aerosols. The aerosol size distribution parameters shift with Angstrom exponent. As Angstrom exponent increases, the fine mode fraction and geometric standard deviation increase as well, while the median radius has an opposite trend. Furthermore, it is found that fine mode is more closely correlated with Angstrom exponent than the coarse mode, where increasing Angstrom exponent corresponds to decreasing fine mode median radius. This agrees with other's works. The physics that more fine aerosols result in more scattering and absorbing in the visible wavelengths that it interacts with the longer wavelength channels and lead to higher Angstrom exponent. Furthermore, under predominately fine aerosol event ( $\alpha > 0.7$ ), it is found that the coarse mode variation with  $\alpha$  is significant while the fine mode remains more or less the same. When it is the high coarse aerosol condition ( $\alpha < 0.7$ ), both fine and coarse mode vary with  $\alpha$  increasing, where they decrease and increase, respectively. The hygroscopic growth of aerosols is the main underlying mechanism for the observed shifting.

A third mode is observed with its radius  $\sim 1\text{--}2\ \mu\text{m}$ . It is likely to appear under atmospheric conditions with high aerosol loadings and more fine aerosols. When the aerosol optical depth is lower than 0.5, it is insignificant. It becomes especially pronounced when the aerosol loading and Angstrom exponent are larger than 1. The increasing of aerosol loadings leads to a more significant third mode. Under low aerosol loading conditions, the increasing coarse mode aerosols with decreasing Angstrom exponent

are mainly from aerosol with radius larger than the third mode. The aerosol hygroscopic growth and coagulation are the main causes for such phenomenon. The high relative humidity during this period in Hong Kong and high fine aerosols in such urban-industrial area are likely to facilitate the aerosol hygroscopic growth. When aerosol concentrations and especially the fine mode aerosols are extremely high, aerosol coagulation might occur and produce many third mode aerosols. Nevertheless, the local aerosol mixing with transported aerosols like those aged aerosols might also has some impact and should not be neglected.

*Acknowledgements.* The work described in this paper was fully supported by a grant from City University of Hong Kong (Project No. 7200109). We would like to thank the MODIS Science Data Support Team for processing MODIS data. We thank the Principal Investigators and their staff of the AERONET site, PolyU Hong Kong, for providing their valuable data.

## References

- Andreae, M. O.: The dark side of aerosols, *Nature*, 409, 671–672, 2001. 8343
- 15 Angstrom, A.: On the atmospheric transmission of sun radiation and on dust in the air, *Geogr. Ann.*, 11, 156–166, 1929. 8349
- Boi, P., Tonna, G., Dalu, G., Nakajima, T., Olivieri, B., Pompei, A., Campanelli, M., and Rao, R.: Calibration and data elaboration procedure for sky irradiance measurements, *Appl. Opt.*, 38, 896–907, 1999. 8346, 8347
- 20 Campanelli, M., Estelles, V., Tomasi, C., Nakajima, T., Malvestuto, V., and Martinez-Lozano, J. A.: Application of the SKYRAD Improved Langley plot method for the in situ calibration of CIMEL Sun-sky photometers, *Appl. Opt.*, 46, 2688–2702, 2007. 8347
- Carmine, C. D., Campanelli, M., Nakajima, T., Tomasi, C., and Vitale, V.: Retrievals of antarctic aerosol characteristics using a Sun-sky radiometer during the 2001–2002 austral summer campaign, *J. Geophys. Res.*, 110, D13202, doi:10.1029/2004JD005280, 2005. 8345, 8346
- 25 Chan, C. Y., Chan, L. Y., Harris, J. M., Oltmans, S. J., Blake, D. R., Qin, Y., Zheng, Y. G., and Zheng, X. D.: Characteristics of biomass burning emission sources, transport, and chemical speciation in enhanced springtime tropospheric ozone profile over Hong Kong, *J. Geophys. Res.*, 108, 4015, doi:10.1029/2001JD001555, 2003. 8345, 8355

## Study of columnar aerosol size distribution in Hong Kong

X. Yang and M. Wenig

Title Page

Abstract

Introduction

Conclusions

References

Tables

Figures

⏪

⏩

◀

▶

Back

Close

Full Screen / Esc

Printer-friendly Version

Interactive Discussion



Chan, L., Chan, C., Liu, H., Christopher, S., Oltmans, S., and Harris, J.: A case study on the biomass burning in Southeast Asia and enhancement of tropospheric ozone over Hong Kong, *Geophys. Res. Lett.*, 27, 1479–1482, 2000. 8345, 8355

Cheng, Y., Lee, S. C., Ho, K. F., Wang, Y. Q., Cao, J. J., Chow, J. C., and Watson, J. G.: Black carbon measurement in a coastal area of south China, *J. Geophys. Res.*, 111, D12310, doi:10.1029/2005JD006663, 2006. 8355

Chu, D. A., Kaufman, Y. J., Zibordi, G., Chern, J. D., Mao, J., Li, C., and Holben, B. N.: Global monitoring of air pollution over land from the Earth Observing System-Terra Moderate Resolution Imaging Spectroradiometer (MODIS), *J. Geophys. Res.*, 108, 4661, doi:10.1029/2002JD003179, 2003. 8348

Cohen, D. D., Garton, D., Stelcer, E., Hawas, O., Wang, T., Poon, S., Kim, J., Choi, B. C., Oh, S. N., Shin, H.-J., Ko, M. Y., and Uematsu, M.: Multielemental analysis and characterization of fine aerosols at several key ACE-Asia sites, *J. Geophys. Res.*, 109, D19S12, doi:10.1029/2003JD003569, 2004. 8345

Dubovik, O. and King, M. D.: A flexible inversion algorithm for retrieval of aerosol optical properties from Sun and sky radiance measurements, *J. Geophys. Res.*, 105, 20673–20696, 2000. 8343, 8344, 8350

Dubovik, O., Holben, B. N., Eck, T. F., Smirnov, A., Kaufman, Y. J., King, M. D., Tarré, D., and Slutsker, I.: Variability of absorption and optical properties of key aerosol types observed in worldwide locations, *J. Atmos. Sci.*, 59, 590–608, 2002. 8344, 8345, 8347, 8349, 8350, 8351, 8354

Eck, T. F., Holben, B. N., Ward, D. E., Dubovik, O., Reid, J. S., Smirnov, A., Mukelabai, M. M., Hsu, N. C., O'Neill, N. T., and Slutsker, I.: Characterization of the optical properties of biomass burning aerosols in zambia during the 1997 ZIBBEE field campaign, *J. Geophys. Res.*, 106, 3425–3448, 2001. 8355

Eck, T. F., Holben, B. N., Reid, J. S., O'Neill, N. T., Schafer, J. S., Dubovik, O., Smirnov, A., Yamasoe, M. A., and Artaxo, P.: High aerosol optical depth biomass burning events: A comparison of optical properties for different source regions, *Geophys. Res. Lett.*, 30, 2035, doi:10.1029/2003GL017861, 2003a. 8344, 8355

Eck, T. F., Holben, B. N., Ward, D. E., Mukelabai, M. M., Dubovik, O., Smirnov, A., Schafer, J. S., Hsu, N. C., Piketh, S. J., Queface, A., Roux, J. L., Swap, R. J., and Slutsker, I.: Variability of biomass burning aerosol optical characteristics in southern Africa during the SAFARI 2000 dry season campaign and a comparison of single scattering albedo estimates from radiomet-

**Study of columnar aerosol size distribution in Hong Kong**

X. Yang and M. Wenig

Title Page

Abstract

Introduction

Conclusions

References

Tables

Figures



Back

Close

Full Screen / Esc

Printer-friendly Version

Interactive Discussion

- ric measurements, *J. Geophys. Res.*, 108, 8477, doi:10.1029/2002JD002321, 2003b. 8344, 8345, 8355
- Eck, T. F., Holben, B. N., Dubovik, O., Smirnov, A., Goloub, P., Chen, H. B., Chatenet, B., Gomes, L., Zhang, X.-Y., Tsay, S.-C., Ji, Q., Giles, D., and Slutsker, I.: Columnar aerosol optical properties at AERONET sites in central eastern Asia and aerosol transport to the tropical mid-Pacific. *J. Geophys. Res.*, 110, D06202, doi:10.1029/2004JD005274, 2005. 8343, 8344, 8351, 8353
- Eck, T. F., Holben, B. N., Reid, J. S., Sinyuk, A., Dubovik, O., Smirnov, A., Giles, D., O'Neill, N. T., Tsay, S.-C., Ji, Q., Al Mandoos, A., Ramzan Khan, M., Reid, E. A., Schafer, J. S., Sorokine, M., Newcomb, W., and Slutsker, I.: Spatial and temporal variability of column-integrated aerosol optical properties in the southern Arabian Gulf and United Arab Emirates in summer, *J. Geophys. Res.*, 113, D01204, doi:10.1029/2007JD008944, 2008. 8344, 8353
- Heald, C. L., Jacob, D. J., Palmer, P. I., Evans, M. J., Sachse, G. W., Singh, H. B., and Blake, D. R.: Biomass burning emission inventory with daily resolution: Application to aircraft observations of Asian outflow, *J. Geophys. Res.*, 108, 8811, doi:10.1029/2002JD003082, 2003. 8345, 8355
- Hess, M., Koepke, P., and Schult, I.: Optical properties of aerosols and clouds: The software package OPAC, *B. Am. Meteorol. Soc.*, 79, 831–844, 1998. 8357
- Highwood, E. J., Haywood, J. M., Silverstone, M. D., Newman, S. M., and Taylor, J. P.: Radiative properties and direct effect of Saharan dust measured by the C-130 aircraft during Saharan Dust Experiment (SHADE): 2. Terrestrial spectrum, *J. Geophys. Res.*, 108, 8578, doi:10.1029/2002JD002552, 2003. 8349
- Holben, B. N., Eck, T. F., Slutsker, I., Tanré, D., Buis, J. P., Setzer, A., Vermote, E., Reagan, J. A., Kaufman, Y. J., Nakajima, T., Lavenu, F., Jankowiak, I., and Smirnov, A.: AERONET – a federated instrument network and data archive for aerosol characterization, *Remote Sens. Environ.*, 66, 1–16, 1998. 8343
- Holben, B. N., Tanré, D., Smirnov, A., Eck, T. F., Slutsker, I., Abuhassan, N., Newcomb, W. W., Schafer, J. S., Chatenet, B., Lavenu, F., Kaufman, Y. J., Castle, J. V., Setzer, A., Markham, B., Clark, D., Frouin, R., Halthore, R., Karneli, A., O'Neill, N. T., Pietras, C., Pinker, R. T., Voss, K., and Zibordi, G.: An emerging ground-based aerosol climatology: Aerosol optical depth from AERONET, *J. Geophys. Res.*, 106, 12067–12097, 2001. 8343
- Huebert, B. J., Bates, T., Russell, P. B., Shi, G., Kim, Y. J., Kawamura, K., Carmichael, G., and Nakajima, T.: An overview of ACE-Asia: Strategies for quantifying the relation-

---

**Study of columnar aerosol size distribution in Hong Kong**X. Yang and M. Wenig

---

[Title Page](#)[Abstract](#)[Introduction](#)[Conclusions](#)[References](#)[Tables](#)[Figures](#)[◀](#)[▶](#)[◀](#)[▶](#)[Back](#)[Close](#)[Full Screen / Esc](#)[Printer-friendly Version](#)[Interactive Discussion](#)

- ships between Asian aerosols and their climatic impacts, *J. Geophys. Res.*, 108, 8633, doi:10.1029/2003JD003550, 2003. 8345
- Ichoku, C., Chu, D. A., Mattoo, S., Kaufman, Y. J., Remer, L. A., Tanré, D., Slutsker, I., and Holben, B. N.: A spatio-temporal approach for global validation and analysis of MODIS aerosol products, *Geophys. Res. Lett.*, 29(12), 8006, doi:10.1029/2001GL013206, 2002. 8348
- Intergovernmental Panel on Climate Change. *Climate Change 2007: The Physical Science Basis*, Cambridge Univ. Press, Cambridge, UK, 2007. 8343
- Kaufman, Y. J.: Aerosol optical thickness and atmospheric path radiance, *J. Geophys. Res.*, 98, 2677–2692, 1993. 8356
- Kaufman, Y. J., Gitelson, A., Karnieli, A., Ganor, E., Fraser, R. S., Nakajima, T., Mattoo, S., and Holben, B. N.: Size distribution and scattering phase function of aerosol particles retrieved from sky brightness measurements, *J. Geophys. Res.*, 99, 10341–10356, 1994. 8345, 8346
- Kaufman, Y. J., Tanré, D., Remer, L. A., Vermote, E. F., Chu, A., and Holben, B. N.: Operational remote sensing of tropospheric aerosol over land from EOS moderate resolution imaging spectroradiometer, *J. Geophys. Res.*, 102, 17051–17067, 1997. 8348
- Kaufman, Y. J., Smirnov, A., Holben, B. N., and Dubovik, O.: Baseline maritime aerosol: Methodology to derive the optical thickness and scattering properties, *Geophys. Res. Lett.*, 28, 3251–3254, 2001. 8343, 8344, 8354
- Kaufman, Y. J., Tanré, D., and Boucher, O.: A satellite view of aerosols in the climate system, *Nature*, 419, 215–223, 2002. 8343
- Kaufman, Y. J., Boucher, O., Tanré, D., Chin, M., Remer, L. A., and Takemura, T.: Aerosol anthropogenic component estimated from satellite data. *Geophys. Res. Lett.*, 32, L17804, doi:10.1029/2005GL023125, 2005. 8343
- Kim, D.-H., Sohn, B.-J., Nakajima, T., Takamura, T., Takemura, T., Choi, B.-C., and Yoon, S.-C.: Aerosol optical properties over east Asia determined from ground-based sky radiation measurements, *J. Geophys. Res.*, 109, D02209, doi:10.1029/2003JD003387, 2004. 8345
- Kleidman, R. G., O'Neill, N. T., Remer, L. A., Kaufman, Y. J., Eck, T. F., Tanré, D., Dubovik, O., and Holben, B. N.: Comparison of Moderate Resolution Imaging Spectroradiometer (MODIS) and Aerosol Robotic Network (AERONET) remote-sensing retrievals of aerosol fine mode fraction over ocean, *J. Geophys. Res.*, 110, D22205, doi:10.1029/2005JD005760, 2005. 8343
- Levy, R. C., Remer, L. A., Mattoo, S., Vermote, E. F., and Kaufman, Y. J.: Second-generation operational algorithm: Retrieval of aerosol properties over land from inversion of Moderate

---

**Study of columnar aerosol size distribution in Hong Kong**X. Yang and M. Wenig

---

[Title Page](#)[Abstract](#)[Introduction](#)[Conclusions](#)[References](#)[Tables](#)[Figures](#)[⏪](#)[⏩](#)[◀](#)[▶](#)[Back](#)[Close](#)[Full Screen / Esc](#)[Printer-friendly Version](#)[Interactive Discussion](#)

Resolution Imaging Spectroradiometer spectral reflectance, *J. Geophys. Res.*, 112, D13211, doi:10.1029/2006JD007811, 2007. 8348

Nakajima, T., Tonna, G., Rao, R. Z., Boi, P., Kaufman, Y. J., and Holben, B. N.: Use of sky brightness measurements from ground for remote sensing of particulate polydispersions, *Appl. Optics*, 35, 2672–2686, 1996. 8346, 8347

Nakajima, T., Sekiguchi, M., Takemura, T., Uno, I., Higurashi, A., Kim, D., Sohn, B. J., Oh, S.-N., Nakajima, T. Y., Ohta, S., Okada, I., Takamura, T., and Kawamoto, K.: Significance of direct and indirect radiative forcings of aerosols in the East China Sea region, *J. Geophys. Res.*, 108, 8658, doi:10.1029/2002JD003261, 2003. 8345

O'Neill, N. T., Ignatov, A., Holben, B. N., and Eck, T. F.: The lognormal distribution as a reference for reporting aerosol optical depth statistics; empirical tests using multi-year, multi-site AERONET sunphotometer data, *Geophys. Res. Lett.*, 27, 3333–3336, 2000. 8352

O'Neill, N. T., Eck, T. F., Holben, B. N., Smirnov, A., Dubovik, O., and Royer, A.: Bimodal size distribution influences on the variation of Angstrom derivatives in spectral and optical depth space, *J. Geophys. Res.*, 106, 9787–9806, 2001. 8356

O'Neill, N. T., Eck, T. F., Smirnov, A., Holben, B. N., and Thulasiraman, S.: Spectral discrimination of coarse and fine mode optical depth, *J. Geophys. Res.*, 108, 4559, doi:10.1029/2002JD002975, 2003. 8343, 8356

Reid, J. S., Hobbs, P. V., Ferek, R. J., Blake, D. R., Martins, J. V., Dunlap, M. R., and Liousse, C.: Physical, chemical, and optical properties of regional hazes dominated by smoke in Brazil, *J. Geophys. Res.*, 103, 32059–32080, 1998. 8344, 8355, 8356

Reid, J. S., Eck, T. F., Christopher, S. A., Hobbs, P. V., and Holben, B. N.: Use of the Angstrom exponent to estimate the variability of optical and physical properties of aging smoke particles in Brazil, *J. Geophys. Res.*, 104, 27473–27489, 1999. 8344, 8345, 8355

Remer, L. A., Kaufman, Y. J., Tanré, D., Mattoo, S., Chu, D. A., Martins, J. V., Li, R. R., Ichoku, C., Levy, R. C., Kleidman, R. G., Eck, T. F., Vermote, E., and Holben, B. N.: The MODIS aerosol algorithm, products, and validation, *J. Atmos. Sci.*, 62, 947–973, 2005. 8348

Schafer, J. S., Eck, T. F., Holben, B. N., Artaxo, P., and Duarte, A. F.: Characterization of the optical properties of atmospheric aerosols in Amazonia from long-term AERONET monitoring (1993–1995 and 1999–2006). *J. Geophys. Res.*, 113, D04204, doi:10.1029/2007JD009319, 2008. 8344, 8353

Schuster, G. L., Dubovik, O., and Holben, B. N.: Angstrom exponent and bimodal aerosol size distributions. *J. Geophys. Res.*, 111, D07207, doi:10.1029/2005JD006328, 2006. 8343,

**Study of columnar aerosol size distribution in Hong Kong**

X. Yang and M. Wenig

Title Page

Abstract

Introduction

Conclusions

References

Tables

Figures

◀

▶

◀

▶

Back

Close

Full Screen / Esc

Printer-friendly Version

Interactive Discussion

Singh, R. P., Dey, S., Tripathi, S. N., Tare, V., and Holben, B.: Variability of aerosol parameters over Kanpur, northern India, *J. Geophys. Res.*, 109, D23206, doi:10.1029/2004JD004966, 2004. 8344, 8345, 8351, 8352, 8354

5 Smirnov, A., Holben, B. N., Eck, T. F., Dubovik, O., and Slutsker, I.: Cloud-screening and quality control algorithms for the AERONET database, *Remote Sens. Environ.*, 73, 337–349, 2000. 8347, 8354

Smirnov, A., Holben, B. N., Kaufman, Y. J., Dubovik, O., Eck, T. F., Slutsker, I., Pietras, C., and Halthore, R. N.: Optical properties of atmospheric aerosol in maritime environments, *J.*  
 10 *Atmos. Sci.*, 59, 501–523, 2002. 8352

Smirnov, A., Holben, B. N., Dubovik, O., Frouin, R., Eck, T. F., and Slutsker, I.: Maritime component in aerosol optical models derived from Aerosol Robotic Network data, *J. Geophys. Res.*, 108, 4033, doi:10.1029/2002JD002701, 2003. 8343, 8344, 8351, 8354

Tang, I. N.: Chemical and size effects of hygroscopic aerosols on light scattering coefficients, *J. Geophys. Res.*, 101, 19245–19250, 1996. 8343

15 Tonna, G., Nakajima, T., and Rao, R.: Aerosol features retrieved from solar aureole data – a simulation study concerning a turbid atmosphere, *Appl. Optics*, 34, 4486–4499, 1995. 8346

Wang, T., Ding, A. J., Blake, D. R., Zahorowski, W., Poon, C. N., and Li, Y. S.: Chemical characterization of the boundary layer outflow of air pollution to Hong Kong during February–  
 20 April 2001, *J. Geophys. Res.*, 108, 8787, doi:10.1029/2002JD003272, 2003. 8345, 8355

Zheng, M., Kester, D. R., Wang, F., Shi, X., and Guo, Z.: Size distribution of organic and inorganic species in Hong Kong aerosols during the wet and dry seasons, *J. Geophys. Res.*, 113, D16303, doi:10.1029/2007JD009494, 2008. 8345, 8355

---

## Study of columnar aerosol size distribution in Hong Kong

X. Yang and M. Wenig

---

Title Page

Abstract

Introduction

Conclusions

References

Tables

Figures

⏪

⏩

◀

▶

Back

Close

Full Screen / Esc

Printer-friendly Version

Interactive Discussion



## Study of columnar aerosol size distribution in Hong Kong

X. Yang and M. Wenig

**Table 1.** Average aerosol optical properties in the years of 2002, 2003, 2004 and 2008.

	2002	2003	2004	2008
Fine fraction (%)	45.61	47.16	49.12	49.17
$r_f$ ( $\mu\text{m}$ )	0.19	0.17	0.18	0.19
$r_c$ ( $\mu\text{m}$ )	2.65	2.78	2.78	2.71
$r_V$ ( $\mu\text{m}$ )	0.84	0.77	0.77	0.75
$C_f$ ( $\mu\text{m}^3 \mu\text{m}^{-2}$ )	0.073	0.072	0.096	0.084
$C_c$ ( $\mu\text{m}^3 \mu\text{m}^{-2}$ )	0.089	0.085	0.103	0.086
$C_V$ ( $\mu\text{m}^3 \mu\text{m}^{-2}$ )	0.162	0.157	0.198	0.169
$\sigma_f$ ( $\mu\text{m}$ )	0.52	0.56	0.52	0.50
$\sigma_c$ ( $\mu\text{m}$ )	0.78	0.77	0.78	0.81
$\sigma_V$ ( $\mu\text{m}$ )	1.45	1.53	1.48	1.47
AOD	0.57	0.52	0.71	0.55
$\alpha$	1.32	1.39	1.39	1.33

Title Page

Abstract

Introduction

Conclusions

References

Tables

Figures

◀

▶

◀

▶

Back

Close

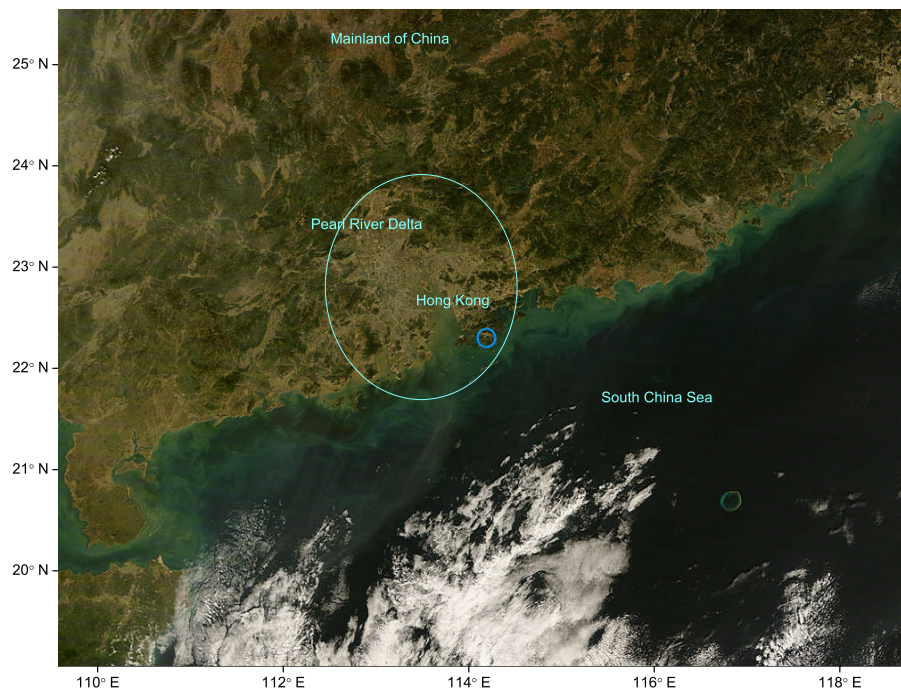
Full Screen / Esc

Printer-friendly Version

Interactive Discussion

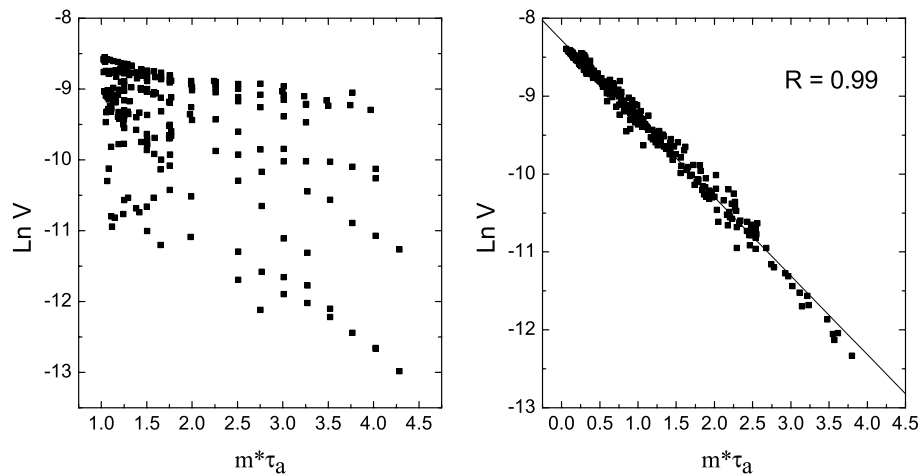
**Study of columnar  
aerosol size  
distribution in Hong  
Kong**

X. Yang and M. Wenig

**Fig. 1.** Satellite view of Hong Kong and the Pearl Delta River region from MODIS Terra.[Title Page](#)[Abstract](#)[Introduction](#)[Conclusions](#)[References](#)[Tables](#)[Figures](#)[⏪](#)[⏩](#)[◀](#)[▶](#)[Back](#)[Close](#)[Full Screen / Esc](#)[Printer-friendly Version](#)[Interactive Discussion](#)

**Study of columnar  
aerosol size  
distribution in Hong  
Kong**

X. Yang and M. Wenig

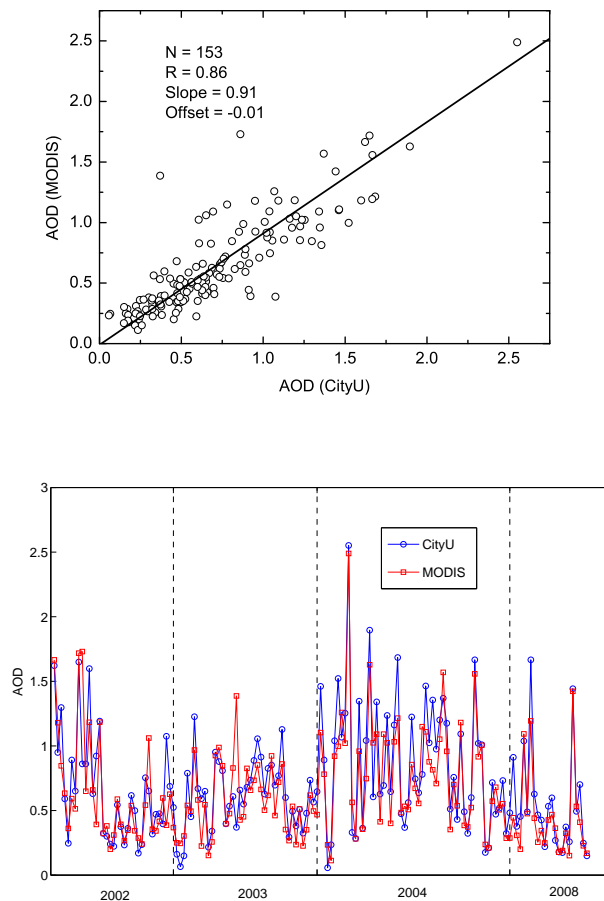


**Fig. 2.** The Langley plots from the normal (left plot) and improved (right plot) methods in 2008.

[Title Page](#)[Abstract](#)[Introduction](#)[Conclusions](#)[References](#)[Tables](#)[Figures](#)[◀](#)[▶](#)[◀](#)[▶](#)[Back](#)[Close](#)[Full Screen / Esc](#)[Printer-friendly Version](#)[Interactive Discussion](#)

**Study of columnar aerosol size distribution in Hong Kong**

X. Yang and M. Wenig

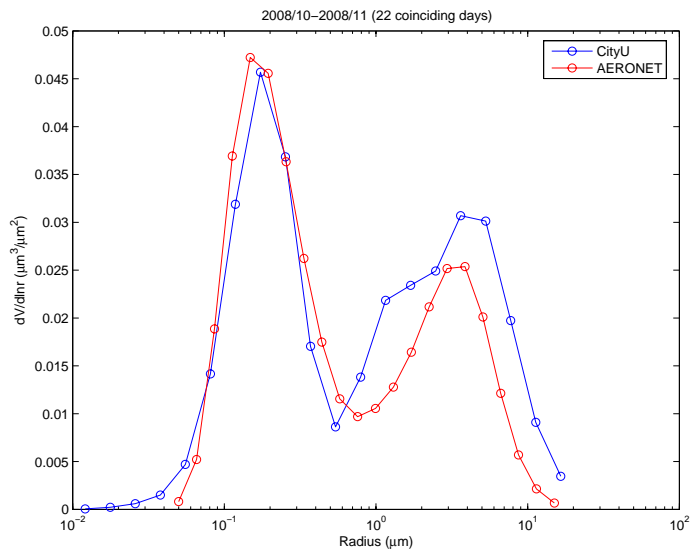


**Fig. 3.** Intercomparison of AODs from CityU and MODIS terra (153 coinciding days) in terms of scattergrams (upper plot) and time series (lower plot).

[Title Page](#)[Abstract](#)[Introduction](#)[Conclusions](#)[References](#)[Tables](#)[Figures](#)[◀](#)[▶](#)[◀](#)[▶](#)[Back](#)[Close](#)[Full Screen / Esc](#)[Printer-friendly Version](#)[Interactive Discussion](#)

**Study of columnar aerosol size distribution in Hong Kong**

X. Yang and M. Wenig

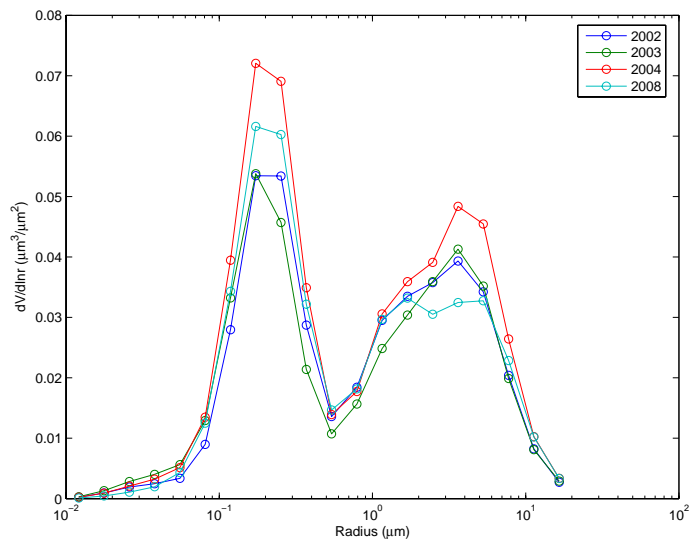


**Fig. 4.** Intercomparison of average aerosol size distributions of CityU and AERONET from October to November of 2008.

[Title Page](#)[Abstract](#)[Introduction](#)[Conclusions](#)[References](#)[Tables](#)[Figures](#)[◀](#)[▶](#)[◀](#)[▶](#)[Back](#)[Close](#)[Full Screen / Esc](#)[Printer-friendly Version](#)[Interactive Discussion](#)

**Study of columnar  
aerosol size  
distribution in Hong  
Kong**

X. Yang and M. Wenig

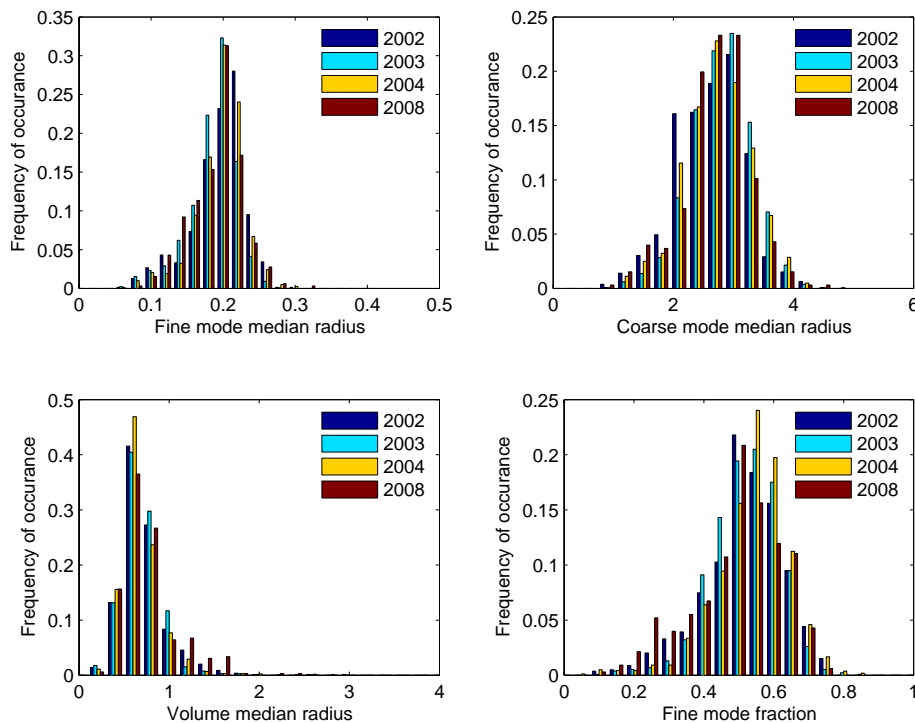


**Fig. 5.** Average aerosol size distributions in 2002, 2003, 2004 and 2008, respectively.

[Title Page](#)[Abstract](#)[Introduction](#)[Conclusions](#)[References](#)[Tables](#)[Figures](#)[◀](#)[▶](#)[◀](#)[▶](#)[Back](#)[Close](#)[Full Screen / Esc](#)[Printer-friendly Version](#)[Interactive Discussion](#)

**Study of columnar aerosol size distribution in Hong Kong**

X. Yang and M. Wenig

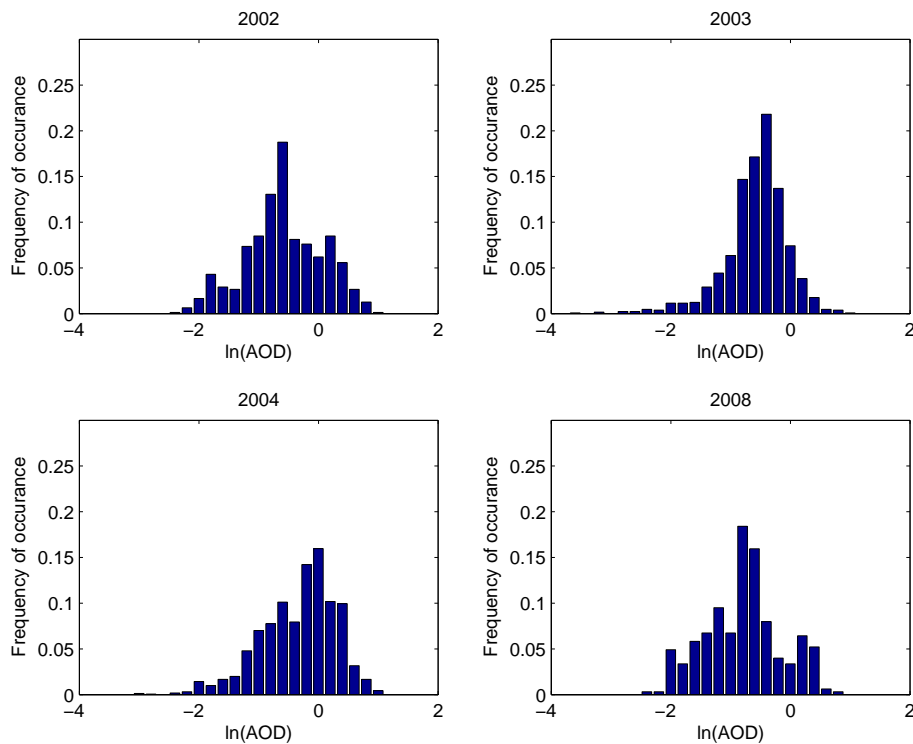


**Fig. 6.** Frequency of occurrences of the fine mode median radius, coarse mode median radius, the whole spectra median mode and the fine mode fraction.

[Title Page](#)[Abstract](#)[Introduction](#)[Conclusions](#)[References](#)[Tables](#)[Figures](#)[◀](#)[▶](#)[◀](#)[▶](#)[Back](#)[Close](#)[Full Screen / Esc](#)[Printer-friendly Version](#)[Interactive Discussion](#)

**Study of columnar  
aerosol size  
distribution in Hong  
Kong**

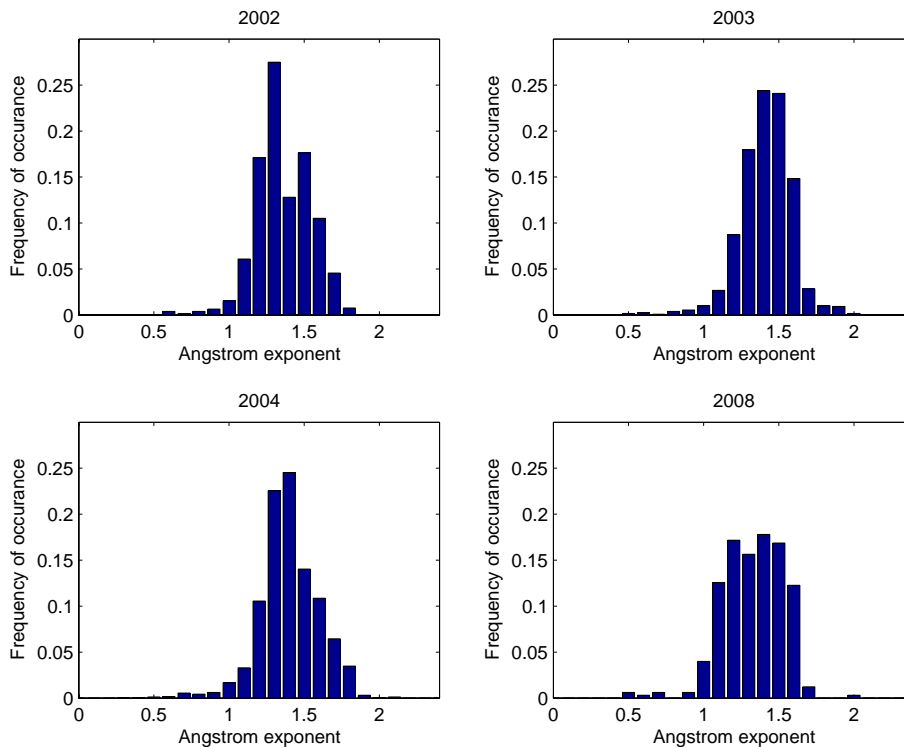
X. Yang and M. Wenig

**Fig. 7.** Frequency of occurrences of AODs in the years of 2002, 2003, 2004 and 2008.[Title Page](#)[Abstract](#)[Introduction](#)[Conclusions](#)[References](#)[Tables](#)[Figures](#)[◀](#)[▶](#)[◀](#)[▶](#)[Back](#)[Close](#)[Full Screen / Esc](#)[Printer-friendly Version](#)[Interactive Discussion](#)



**Study of columnar  
aerosol size  
distribution in Hong  
Kong**

X. Yang and M. Wenig

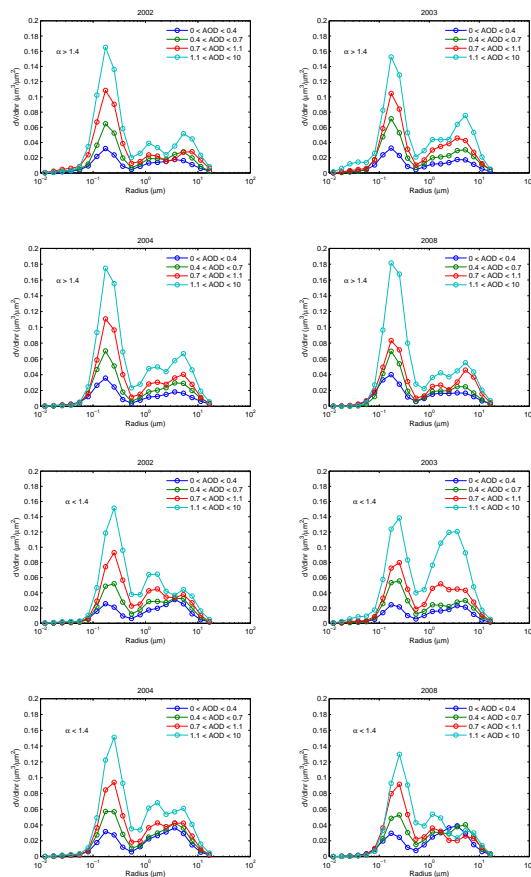


**Fig. 8.** Frequency of occurrences of Angstrom exponent in the years of 2002, 2003, 2004 and 2008.

[Title Page](#)[Abstract](#)[Introduction](#)[Conclusions](#)[References](#)[Tables](#)[Figures](#)[⏪](#)[⏩](#)[◀](#)[▶](#)[Back](#)[Close](#)[Full Screen / Esc](#)[Printer-friendly Version](#)[Interactive Discussion](#)

## Study of columnar aerosol size distribution in Hong Kong

X. Yang and M. Wenig



**Fig. 9.** Aerosol size distributions in different AOD bins of  $\alpha > 1.4$  (upper plots) and  $\alpha < 1.4$  (lower plots).

Title Page

Abstract

Introduction

Conclusions

References

Tables

Figures

◀

▶

◀

▶

Back

Close

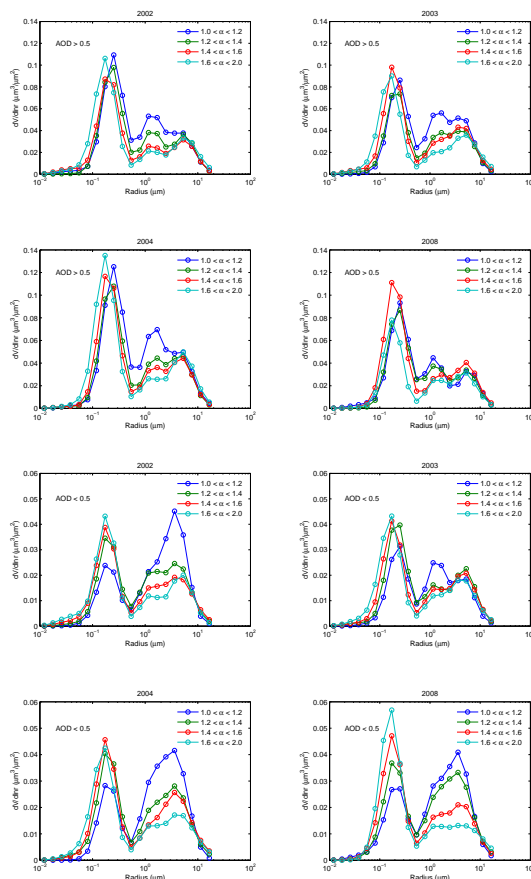
Full Screen / Esc

Printer-friendly Version

Interactive Discussion

## Study of columnar aerosol size distribution in Hong Kong

X. Yang and M. Wenig



**Fig. 10.** Aerosol size distributions in different Angstrom exponent bins of AOD > 0.5 (upper plots) and AOD < 0.5 (lower plots).

Title Page

Abstract

Introduction

Conclusions

References

Tables

Figures

◀

▶

◀

▶

Back

Close

Full Screen / Esc

Printer-friendly Version

Interactive Discussion