

This discussion paper is/has been under review for the journal *Atmospheric Chemistry and Physics (ACP)*. Please refer to the corresponding final paper in *ACP* if available.

**Day-time BVOC  
concentrations in a  
boreal forest**

H. K. Lappalainen et al.

# Day-time concentrations of biogenic volatile organic compounds in a boreal forest canopy and their relation to environmental and biological factors

H. K. Lappalainen<sup>1,2</sup>, S. Sevanto<sup>2</sup>, J. Bäck<sup>3</sup>, T. M. Ruuskanen<sup>2</sup>, P. Kolari<sup>3</sup>,  
R. Taipale<sup>2</sup>, J. Rinne<sup>2</sup>, M. Kulmala<sup>2</sup>, and P. Hari<sup>3</sup>

<sup>1</sup>Finnish Meteorological Institute, P.O. Box 503, 00101 Helsinki, Finland

<sup>2</sup>Department of Physics, P.O. Box 64, 00014 University of Helsinki, Helsinki, Finland

<sup>3</sup>Department of Forest Ecology, P.O. Box 27, 00014 University of Helsinki, Helsinki, Finland

Received: 29 January 2009 – Accepted: 23 February 2009 – Published: 9 March 2009

Correspondence to: H. K. Lappalainen (hanna.k.lappalainen@helsinki.fi)

Published by Copernicus Publications on behalf of the European Geosciences Union.

Title Page

Abstract

Introduction

Conclusions

References

Tables

Figures

⏪

⏩

◀

▶

Back

Close

Full Screen / Esc

Printer-friendly Version

Interactive Discussion



## Abstract

Atmospheric concentrations of methanol, acetaldehyde, acetone, isoprene and monoterpenes were measured using a PTR-MS (proton transfer reaction mass spectrometry) in a boreal forest site in Hyytiälä, Finland (61°51 N, 24°17 E). The concentration measurements were made in the upper canopy of a Scots pine forest during 6 June 2006 – 31 August 2007. Meteorological variables such as temperature and photosynthetically active radiation were measured simultaneously. We also detected biologically sensitive turnover points such as the onsets of photosynthetic activity, onset of growing season, budburst and stem growth during the annual cycle and compared them to changes in BVOC (biogenic volatile organic compound) concentrations. A typical seasonal pattern of winter minimum and summer maximum was found for all studied compounds except acetaldehyde. Spring time methanol and acetone concentrations increased together with photosynthetic capacity. The day-time daily median BVOC concentrations correlated best with air temperature. The inter correlations between compounds and the analysis of meteorological conditions indicated that the measured concentrations presented well the local source. During an exceptional summer drought period the concentrations were neither connected with photosynthesis nor transpiration, but they were regulated by some other, yet unknown factors.

## 1 Introduction

Forests are a significant source of volatile organic compound (VOC) emissions. Globally, the emissions from boreal areas are less than those from temperate or tropical regions, but their contribution to regional BVOC (biogenic volatile organic compound) budget is significant (Guenther et al., 1995). Studies of BVOC emissions from the boreal forest zone consider mostly monoterpenes and isoprene, but boreal forests also emit methanol, acetone and acetaldehyde (Janson et al., 1999; Janson and Serves, 2001; Rinne et al., 2007). The emitted compounds differ between the major boreal

### Day-time BVOC concentrations in a boreal forest

H. K. Lappalainen et al.

Title Page

Abstract

Introduction

Conclusions

References

Tables

Figures

◀

▶

◀

▶

Back

Close

Full Screen / Esc

Printer-friendly Version

Interactive Discussion



tree species. Scots pine (*Pinus sylvestris* L.) and Norway spruce (*Picea abies* L. Karst.) and some deciduous tree species like silver birch (*Betula pubescens* Ehrh.) are mainly monoterpene emitters, whereas trembling aspen (*Populus tremula* L.) and willow (*Salix*) species emit mostly isoprene (Janson and Serves, 2001; Hakola et al., 2000). Once emitted into the atmosphere, the BVOCs may participate in the secondary organic aerosol (SOA) growth which is part of the atmospheric particle formation processes critical to the climate system (Kourtchev et al., 2008; Kulmala et al., 2007; Kulmala et al., 2004; Tunved et al., 2006).

The BVOC concentrations in the atmospheric boundary layer are affected by several biological and physical processes of different temporal and spatial scales. First, there are the emissions from the biological sources (here plants) that depend on physiological status of plants and their reactions to the environment (stomatal closure/opening, stress, temperature etc.) as well as plant internal capacity to produce BVOCs (seasonal effect) and the size of plant BVOC storage and their possible reactions to the environment. Second, there are the factors affecting the measured concentrations in the air such as the chemical reactivity of a substance, the long range transport and the mixing of the atmosphere.

The central plant physiological processes in question here are photosynthesis, growth and specific, defence-related metabolism which starts to take place under stress. Isoprene and monoterpenes are synthesized in processes related to the biosynthesis of carotenoids in the chloroplasts. Their formation is thus regulated at least partly by the same factors (Owen and Penuelas, 2005). The substrates involved in their biosynthesis are derived from the Calvin cycle, and therefore a direct link to photosynthesis has been postulated and formulated in a physiological model framework describing emissions of isoprene (Niinemets et al., 1999) and monoterpenes (Bäck et al., 2005). Methanol emissions, on the other hand, seem to be related to growth. Methanol is produced during cell wall expansion in pectin biosynthesis process (Galbally and Kirstine, 2002). Acetaldehyde and acetone can be derived from several metabolic routes (Jardine et al., 2008). Acetaldehyde, for example, can be produced

---

## Day-time BVOC concentrations in a boreal forest

H. K. Lappalainen et al.

---

[Title Page](#)[Abstract](#)[Introduction](#)[Conclusions](#)[References](#)[Tables](#)[Figures](#)[◀](#)[▶](#)[◀](#)[▶](#)[Back](#)[Close](#)[Full Screen / Esc](#)[Printer-friendly Version](#)[Interactive Discussion](#)

during light-dark transitions as a result of sunflecks that increase cytosolic pyruvic acid or as a result of metabolism in anaerobic roots (oxygen deficiency in the soil – soil flooding) or during senescence and leaf wounding (Fall, 2003). Acetone is produced in both light-dependent and -independent processes, which may be related to the decarboxylation of acetoacetate (Fall, 2003).

Previous studies have shown that the most important environmental factors controlling these emissions are air temperature (Tingey et al., 1980) together with light intensity (Guenther et al., 1991; Folkers et al., 2008). Plants are constantly changing the physiological status and acclimate to the environment following cues from their environment during previous hours, days or even seasons (Oquist and Huner, 2003; Mäkelä et al., 2004). It is very probable that these factors influence also the BVOC metabolism in a comparable time scale (Guenther, 1997; Monson et al., 1995; Grote and Niinemets, 2008).

Recent progress in on-line field measurement techniques, such as proton transfer reaction mass spectrometry, (PTR-MS) enables long-term measurements of VOC compounds and holistic studies of the effects of changing climate and biological controls on VOC concentrations (Fall, 2003; Lindinger et al., 1998). Long term in-situ measurements are especially important in the areas like boreal forests which are characterized by potentially high BVOC emission. In many cases BVOC emission measurements are made on a leaf and/or branch scale (shoot chamber technique) and then scaled up to present canopy emissions or atmospheric concentrations using canopy scale models (Grote and Niinemets, 2008). Contrary to that approach, air concentration measurements provide data measured directly at forest canopy scale. However, it remains for each study to show whether they represent the canopy emissions at the particular situation.

The capacity for BVOC biosynthesis in perennial plants may vary during the annual cycle. Sensitive periods such as the onset of photosynthesis, internal allocation of photo-assimilated carbon and different phenological phases like budburst along with increasing leaf area and mass in spring could stimulate daily BVOC emissions. In this

## Day-time BVOC concentrations in a boreal forest

H. K. Lappalainen et al.

Title Page

Abstract

Introduction

Conclusions

References

Tables

Figures

◀

▶

◀

▶

Back

Close

Full Screen / Esc

Printer-friendly Version

Interactive Discussion



study we present the seasonal courses of five BVOC compounds at the upper canopy level of a boreal Scots pine forest. First we evaluate how well the concentrations represent local emissions and then we trace the linkage between the concentrations and biological activity in canopy scale. Finally, we determine which environmental factors predict the measured concentrations best. We analyse the linkage between concentrations and biologic activity in seasonal and daily scale. Our aim was to determine how well air concentration measurements of BVOCs can be linked with the potential emission activity of the forest.

## 2 Material and methods

### 2.1 Measurement site

All the measurements were carried out at the SMEAR-II station (Station for Measuring Forest Ecosystem – Atmosphere Relations), which is located in the boreal forest in Hyytiälä (61°51′ N, 24°17′ E, 181 m a.s.l.), southern Finland (Hari and Kulmala, 2005). The typical landscape surrounding the station 5 km to every direction includes evenly distributed stands of pine, spruce and mixed forests. The area can be classified as a Vaccinium-type forest according to Cajander site class system (see Suni et al., 2003) (Fig. 1). The forest at the station is a homogeneous 47-year-old (16 m in height) Scots pine (*Pinus sylvestris* L.) stand originally planted from seed in 1962. Other tree species represented in minority (only 1% at the station but larger proportions in the vicinity), are Norway spruce (*Picea abies* L. Karst.), trembling aspen (*Populus tremula* L.), white birch (*Betula pubescens* Ehrh.), and grey alder (*Alnus incana* L. Moench). Typical species covering the ground layer are heather (*Calluna vulgaris* L.), lingonberry (*Vaccinium vitis-idaea*) and blueberry (*V. myrtillus*) (Ilvesniemi and Liu, 2001). The forest soil type is haptic podzol.

The station is located in a sparsely populated area of a municipality Juupajoki. The only source of VOCs external to the forests are two sawmills and a pellet factory in

## Day-time BVOC concentrations in a boreal forest

H. K. Lappalainen et al.

Title Page

Abstract

Introduction

Conclusions

References

Tables

Figures

◀

▶

◀

▶

Back

Close

Full Screen / Esc

Printer-friendly Version

Interactive Discussion



Korkeakoski village, approximately 15 km South-East from the station. The annual processed log volume in the local wood industry is ca. 950 000 m<sup>3</sup>. During summer the industry is closed for about one month in July. The industrial VOC emissions originate from drying and processing softwood, mainly pine and spruce.

## 5 2.2 BVOC measurements

The BVOC concentrations (volume mixing ratios) [ppbv] were measured at the upper canopy level (14 m height) using the PTR-MS system described in more detail by Taipale et al. (2008) and Ruuskanen et al. (2008). Every second or third hour the ambient BVOC concentration was measured by taking 15–25 samples per hour. In this paper, we present concentrations of methanol (detected at 33 amu, M33), acetaldehyde (M45), acetone (M59), isoprene and methylbutenol (MBO) (M69), and monoterpenes (M137). The PTR-MS measures concentrations according to molecular masses. The masses presented here may also contain other compounds of similar mass. From here on, however, we call the mass classes by the name of the BVOC compounds that form the major part of the material detected by that mass class. The PTR-MS was calibrated regularly with a gas standard (Taipale et al., 2008; Ruuskanen et al., 2008).

The data was collected during fifteen months, between 6 June 2006 – 31 August 2007. To be able to correlate concentrations with plant physiological activity, we divided the dataset into seasons based on calendar months (Table 1). To make the dataset representative of the postulated maximum emissions, we used day-time medians of the BVOC concentrations (Table 1). The time windows specified for each season represented the time when the sun is high enough to cause atmospheric mixing (Rinne et al., 2005). Furthermore the daytime observations presented the gas exchange from stomata to air rather than the VOC deposition to leaves, which may occur during night. The number of observations varied between seasons due to temporary failures of the measurement system. The longest gap in the dataset was from 26 September to 29 November 2006.

### Day-time BVOC concentrations in a boreal forest

H. K. Lappalainen et al.

Title Page

Abstract

Introduction

Conclusions

References

Tables

Figures

◀

▶

◀

▶

Back

Close

Full Screen / Esc

Printer-friendly Version

Interactive Discussion



## 2.3 Meteorological and biological measurements

Meteorological data was obtained from standard half-hourly micrometeorological measurements at the SMEAR-II station. Air temperature was measured at 8.4 m using a ventilated and shielded Pt-100 sensor. Precipitation was sampled with bottles or buckets. Soil temperature (humus layer at 5 cm) and photosynthetically active photon flux density (PPFD, 400–700 nm) were detected by a thermistor and a quantum sensor (Li-Cor LI-190SZ), respectively. Wind speed and direction were obtained from ultrasonic anemometers (Thies Ultrasonic Anemometer 2-D). For a more detailed description of the measurement systems see Vesala et al. (1998).

We also measured Net Ecosystem Exchange (NEE) using the eddy covariance method (sonic anemometer with gas analyser Solent 1012R2). Wind speed and CO<sub>2</sub> concentration was measured with frequency of 10 Hz and the CO<sub>2</sub>-flux was calculated from the covariance of the vertical wind speed and CO<sub>2</sub> concentration fluctuation and averaged over 30 min. Total Ecosystem Respiration (TER) was estimated from the nighttime NEE and extrapolated to cover daytime using a temperature regression on organic layer temperature (see Mäkelä et al., 2006). Gross Primary Production (GPP) was calculated by subtracting TER from NEE. When measured NEE was rejected or missing, GPP was directly estimated as a saturating function of PPFD. Note that GPP is positive when CO<sub>2</sub> flux is towards the canopy and NEE is negative.

Soil water content, used for the determination of the drought period, was measured continuously at several locations and depths using TDR method (TDR100, Campbell Scientific, Logan, UT, USA). The drought period was defined as a period when volumetric soil water content in the mineral soil was below 0.15 m<sup>3</sup>/m<sup>3</sup> (B horizon 30 cm). This value corresponds to soil water potential of –2 MPa and B-horizon represents the depth where the trees take most of the water (Duursma et al., 2008). In the summer of 2006 the soil water content was below the limit value from 20 June to 30 August (data not shown). The effect of drought on the gas exchanges of trees was detected end of July and the significant decrease was observed in July – August. Summer 2006

### Day-time BVOC concentrations in a boreal forest

H. K. Lappalainen et al.

Title Page

Abstract

Introduction

Conclusions

References

Tables

Figures

◀

▶

◀

▶

Back

Close

Full Screen / Esc

Printer-friendly Version

Interactive Discussion



was the driest summer dedected at SMEAR II station during the whole 12 years of measurements.

The secondary growth of the Scots pine stems was measured using linear displacement transducers (LVDT; Solartron A/5.0/S (Solartron Inc., West Sussex, UK) on four representatives of the dominant pine trees. The LVDTs were attached on rectangular steel frames mounted around the stems at about 2 m height. The stem diameter was recorded with the frequency of 1/min and the diurnal diameter variation resulting from changing water tension inside the xylem was eliminated by using daily mean diameters. Xylem water tension is controlled by the difference between soil water uptake and transpiration. Transpiration can be seen as a consequence of stomatal opening for carbon intake to be used in photosynthesis. When the stomata are open, the stem shrinks and when they are closed the stem swells. This applies as well to the diurnal cycle as to long-term changes. Rainfall can be seen as an overall increase in stem diameter and drought as an overall shrinkage. Therefore, in addition to being an indicator of secondary growth, changes in stem diameter can be used for detecting the water status of the plant (Sevanto et al., 2005). The changes in the diameter of the Scots pine stems were measured during 1 May – 31 October 2006.

The daily shoot and needle growth of Scots pine was measured on four trees, at four heights in the mornings (09:00 a.m.) at least twice a week. The marked main and lateral shoots were measured from 21 May to 11 June and needles from 12 June to 8 August 2007.

## 2.4 Indicators for biological activity

### 2.4.1 State of development, $S$

In boreal evergreen species, seasonal changes in photosynthetic activity are pronounced, and a number of processes are influenced by these variations (Oquist and Huner, 2003). As an indicator of changes in photosynthetic capacity of the trees we used the state of development, parameter  $S$ , formulated by Mäkelä et al. (2004).  $S$

## Day-time BVOC concentrations in a boreal forest

H. K. Lappalainen et al.

Title Page

Abstract

Introduction

Conclusions

References

Tables

Figures

◀

▶

◀

▶

Back

Close

Full Screen / Esc

Printer-friendly Version

Interactive Discussion





follows ambient temperature ( $T$ , °C) in a delayed manner as

$$\frac{dS}{dT} = \frac{T - S}{\tau} \quad (1)$$

where  $\tau$  is a time constant (here 200 h, see Kolari et al., 2007). Photosynthetic capacity in Scots pine is related to  $S$  via, approximately, sigmoidal relationship.

#### 5 2.4.2 Thermal Time ( $TT$ )

A Thermal Time ( $TT$ ) (Sarvas, 1972) model was used to determine the start of bud burst of deciduous trees in spring at SMEAR-II station.  $TT$  model is the most straightforward type of phenological models describing the start of bud development from a fixed calendar date in spring. The  $TT$  model assumes that the environmental conditions required to release the dormancy have taken place before the fixed starting date of temperature sum accumulation onset. The starting date for the temperature sum accumulation can be considered to represent environmental features that take place at the same time in each year, the likely candidate being a changing day length (Linkosalo and Lechowicz, 2006; Linkosalo et al., 2008).  $D(t)$  is a temperature sum considered to represent a stage of phenological event and is the sum of the positive differences (the rate of temperature accumulation  $r(T)$ ), between diurnal mean temperatures over critical temperature threshold value.

$$D(t) = \sum_{t=t_0}^t (r(T)\Delta t) \quad (2)$$

The forests near SMEAR II are mainly coniferous, but unfortunately the parameter values have not been determined for Scots pine or Norway spruce. Therefore, we used the published values for birch and supposed that they can be used as a proxy for the general dormancy release status of tree foliage at the stand. The parameter values for birch (*Betula pubescens*) leaf budburst were obtained from Linkosalo et al.

## Day-time BVOC concentrations in a boreal forest

H. K. Lappalainen et al.

Title Page

Abstract

Introduction

Conclusions

References

Tables

Figures

◀

▶

◀

▶

Back

Close

Full Screen / Esc

Printer-friendly Version

Interactive Discussion



(2008). The starting date for temperature sum accumulation was 26 February, the critical temperature sum threshold 1.5°C and the critical temperature sum threshold 134 day degrees.

### 3 Results and discussion

#### 3.1 Analysis of BVOC transport

Although the forest surrounding the SMEAR II site is rather homogenous, the local BVOC concentration could be affected by emissions transported from nearby sources, especially when compounds with long atmospheric life time are concerned (Rinne et al., 2007). The effect of BVOC transport from sources other than the local forest (mainly the saw mills in the South-East direction) on the measured concentrations was analysed using windroses. Most clear evidence of transported BVOC concentrations was found for monoterpenes and isoprene (Fig. 2). Despite the long lifetime of methanol and acetone, the high concentrations seemed to come quite evenly from all directions. This could also be a result of atmospheric secondary production, which peaks at the same time with photosynthesis (high temperature and radiation) (Seco et al., 2007). However, our measurements were made at the top canopy level where atmospheric mixing is high during daytime and therefore the concentrations can be said to represent the local emission from the forest. The main sources for transported BVOCs are in the East (Korkeakoski Village) and South-East (the saw mills). The dominant wind direction at SMEAR II station in all seasons is West and South-West. However, to be sure that the main potential source of transported BVOCs would not affect our analysis, we filtered out the concentrations measured during the South-East wind in further analysis. In our case sawmill processes could have been an extra source especially for monoterpenes concentrations. Also the local forest logging activities could have affect the air concentrations (emissions from stumps and cut wood). According to local forestry recordings, several forest clear-cutting operations (size of 0.5 ha...10 ha) were

## Day-time BVOC concentrations in a boreal forest

H. K. Lappalainen et al.

Title Page

Abstract

Introduction

Conclusions

References

Tables

Figures

◀

▶

◀

▶

Back

Close

Full Screen / Esc

Printer-friendly Version

Interactive Discussion



carried out in the 0.7–3.5 km distance of the measurement site 2–3 months before or during the measurement period (see Fig. 1). We did not filter these directions because loggings and forest management are a common practise in Finland and we could not identify high concentration peaks to particular operations.

### 5 3.2 BVOC concentrations

All the compounds except acetaldehyde showed clear seasonal differences in the monthly day-time median concentrations (Fig. 3). The concentrations had a minimum in the winter and a maximum in summer. Acetaldehyde concentrations were almost independent of the season. We analysed changing concentration levels together with the photosynthetic capacity (state of development,  $S$ ) and compared the occurrence of daily peak BVOC concentrations to simultaneous biologically sensitive (point) events such as growth rate of stems, shoots and needles, leaf development (budburst) and photosynthesis for each compound separately.

15 *Methanol*. In the autumn, the median monthly day-time methanol concentrations were around 1 ppbv, in spring 0.5 ppbv and in summer around 2 ppbv (Fig. 3). These concentrations were clearly lower than those reported for a mixed hardwood forest in the US (4, 8, 10 ppbv, respectively) (Karl et al., 2003). The lower seasonal concentration levels at our site are most likely related to the species composition. Hyytiälä observation site is dominated by the Scots pine, a monoterpene emitter, while the mixed hardwood forest was dominated by aspen species.

20 The increasing photosynthetic capacity in the spring (2007), described by the “state of development” parameter  $S$  (Eq. 1), correlated well with methanol concentrations between 26 February and 31 May. After that,  $S$  could not predict the measured concentrations (Fig. 4). Methanol is formed during cell wall expansion in pectin biosynthesis process (Galbally and Kirstine, 2002) and therefore it is likely that the high concentrations could be related to increasing leaf area in spring and photosynthetic activity.

25 In summer (2006) there were three periods of clearly elevated methanol concentration peaks (Fig. 5). The first maximum concentration, 7.0 ppbv, was observed on 13

## Day-time BVOC concentrations in a boreal forest

H. K. Lappalainen et al.

Title Page

Abstract

Introduction

Conclusions

References

Tables

Figures

◀

▶

◀

▶

Back

Close

Full Screen / Esc

Printer-friendly Version

Interactive Discussion



**Day-time BVOC concentrations in a boreal forest**

H. K. Lappalainen et al.

Title Page

Abstract

Introduction

Conclusions

References

Tables

Figures

◀

▶

◀

▶

Back

Close

Full Screen / Esc

Printer-friendly Version

Interactive Discussion



June. According to long-term recordings of Hyytiälä area, the budburst of birch (*Betula pendula/pubescens* L.) takes place in mid-May (Lappalainen and Heikinheimo, 1992) and the full leaf area of deciduous tree species is reached in the second week of June. This kind of early summer maximum could correspond to leaf phenology and the potential emission capacity of recently matured leaf biomass. The observed maximum day-time concentration of 7 ppbv is, however, a decade lower than what has been earlier measured in springtime in a mixed hardwood forest or in a pine plantation (Karl et al., 2003; Schade and Goldstein, 2006).

The second peak concentration occurred in the beginning of July. At that time the total ecosystem respiration (TER) started to increase (Fig. 6) and the growth rate of the stems decreased showing even stem shrinkage (Fig. 5), which resulted from drying soil. The third peak occurred later in summer, during the summer drought. The maximum concentrations at that time were 5.4 ppbv on 8 August and 4.8 ppbv on 14 August and they coincided with two fast swelling events of the stem (Fig. 5) that resulted from precipitation events at the end of the drought period. However at the same time the decreased photosynthesis (GPP) and the probable stomatal closure during drought could also refer to potential soil emissions (Seco et al., 2007). Our results agree with the results of Asensio et al. (2007) who have presented that soil drought tend to increase the emissions rates of several VOCs.

In the autumn the level of methanol concentrations decreased. Some high and elevated concentrations were observed in September (2.4 ppbv on 13 September and 2.5 ppbv on 23 September), which might be attributed to senescing and decaying biomass (Fall, 2003; Warneke et al., 1999). Due to a data gap in October we could not conclude the effect of biological factors such as dormancy and defoliation on the measured concentrations or the emission capacity.

During winter the methanol concentrations stayed under 0.7 ppbv. They started to elevate again in mid-March indicating close relationship with spring recovery of photosynthetic activity, which was observed in 2007 on 15 March (see Fig. 4). High concentrations of methanol, 1.6 ppbv, were also measured in the end of the snow melt period,

on 27 March. This might be due to release of methanol accumulated into or below the snow pack. Because of the high water solubility of methanol, the melting of snow might have produced emission bursts. High concentrations of methanol have been linked to soil emissions after end of snow cover period (see Loreto et al., 2008). Elevated concentrations during several days detected after mid-March coincided with the onset of photosynthetic activity (GPP) (see Fig. 6). It is difficult to separate between the effects of the onset of photosynthesis and snowmelt on the measured concentrations, because the two occurred almost simultaneously.

As earlier discussed, the increasing trend in methanol concentrations in late spring may reflect the increasing leaf biomass and the synthesis of the compound in the cell wall elongation processes (see Fall, 2003). Based on thermal time (Eq. 2) the onset of flowering for grey alder (*Alnus incana*) would have been on 14 April and the budburst of birch (*Betula pubescens*) around 14 May. According to long-term recordings we estimate that budburst of aspen (*Populus tremula*) was around May and the full leafing as attained around 27 May–June (Lappalainen and Heikinheimo, 1992) at the time when also the shoot growth of Scots pine started (Fig. 5).

In summer 2007 elevated concentrations were detected when the shoot and needle growth rates were at maximum. Earlier experiments have demonstrated high methanol fluxes in an aspen-oak forest just during the bud break and then a decline as leaves expanded (see Karl et al. 2002, AGU). In both summers 2006 and 2007 we observed minimum in methanol concentrations when either the stem growth or shoot growth ceased.

*Acetaldehyde*. Contrary to other studied compounds we were not able to detect a clear seasonal variation in the acetaldehyde concentrations. Summer concentrations were in 2006 above and in 2007 below 0.3 ppbv (Fig. 3) and winter concentrations varied from 0.16 to 0.33 ppbv. Acetaldehyde is synthesized via several pathways especially under different stress conditions (Graus et al., 2004) which may cause more sporadic diurnal concentration peaks throughout the annual cycle. In our study the only clear long-lasting stress event was the exceptional drought in summer 2006. The

## Day-time BVOC concentrations in a boreal forest

H. K. Lappalainen et al.

Title Page

Abstract

Introduction

Conclusions

References

Tables

Figures

◀

▶

◀

▶

Back

Close

Full Screen / Esc

Printer-friendly Version

Interactive Discussion



acetaldehyde maximum concentration, 1.7 ppbv, was observed during that period, on 13 August. After the drought, the monthly concentrations decreased towards winter and were at minimum (0.17 ppbv) in January (Fig. 5). In February and March, during the snow cover period, the concentrations were around 0.20 ppbv fairly constantly.

5 Because the low possible soil emissions due to snow cover and low biogenic sources due to the low GPP, the observed wintertime acetaldehyde concentrations might be attributed to anthropogenic sources. Near the timing of budburst some elevated acetaldehyde peaks could be detected, but compared to other compounds the increase was minor. In summer 2007 no specific peaks of acetaldehyde concentrations were  
10 observed.

*Acetone.* Scots pine and Norway spruce are the dominating tree species in SMEAR II and are known as significant source of acetone emissions (Janson and Serves, 2001). Acetone concentrations behaved similarly to methanol and had synchronous seasonal pattern and concentration peaks. The similar behavior of methanol and acetone is  
15 partly explained by their relatively long atmospheric lifetime, over 10 days (Atkinson and Arey, 2003).

In summers 2006 and 2007 acetone monthly daytime concentrations were around 1.5–1.7 ppbv (Fig. 3) with the highest measured peaks just under 4.5 ppbv (Fig. 5). Similarly to methanol, these concentrations were lower than those reported for a mix  
20 hardwood forest (5.6 ppbv) by Karl et al. (2003). This was the case even though Scots pine has been shown to emit methylbutenol (MBO) in mid-summer (Tarvainen et al., 2005), which could be an additional source for acetone also in our data. According to Goldstein and Schade (2000), direct biogenic acetone emissions accounted for about 35% of acetone concentrations in a ponderosa pine forest, whereas the oxidation of  
25 biogenic MBO contributed about twice as much to the acetone concentrations.

Similarly as methanol and acetaldehyde, also the maximum summer concentration of acetone, >4.0 ppbv, were measured during the drought period, on 8–10 August. In September day-time concentration stayed between 0.8...2.2 ppbv (Fig. 5). Karl et al. (2003) observed an emission peak in fall in a hardwood forest which could be attributed

---

## Day-time BVOC concentrations in a boreal forest

H. K. Lappalainen et al.

---

[Title Page](#)[Abstract](#)[Introduction](#)[Conclusions](#)[References](#)[Tables](#)[Figures](#)[⏪](#)[⏩](#)[◀](#)[▶](#)[Back](#)[Close](#)[Full Screen / Esc](#)[Printer-friendly Version](#)[Interactive Discussion](#)

to the dying biomass like in the case of acetaldehyde. In winter the concentrations were clearly lower than 0.5 ppbv. In spring acetone concentrations increased again similarly to methanol concentrations, and the photosynthetic capacity ( $S$ ) could predict the increase in acetone concentrations as well (Fig. 4).

5 *Isoprene*. Also isoprene concentrations showed a clear winter minimum and summer maximum. However, the springtime increase in isoprene concentrations was more abrupt than the increase in methanol and acetone (Fig. 3). The monthly median of the concentrations jumped from 0.07 ppbv in May directly to 0.16 ppbv in June. This increase was faster than the increase in photosynthetic capacity ( $S$ ), and therefore  $S$  could not explain springtime isoprene concentrations equally well as the increase in methanol and acetone concentrations (Fig. 4).

10 The summer concentrations of isoprene were above 0.14 ppbv while the winter and early spring concentrations were below 0.06 ppbv (Fig. 3). Interestingly, the winter time background concentrations and the concentrations in the spring were high compared to those measured by Hakola et al. (2000) in Eastern Finland, although the summer concentrations were similar (Hakola reported 3–8 pptv in May, 115–155 pptv in June, 228–346 pptv in July). The abrupt increase in isoprene concentrations in June was similar as the one reported by Hakola et al. (2000). The high summer concentration could be explained by the capability of trees to synthesize and emit isoprenoids, which generally develops during the early stages after leaf emergence. In several tree species the onset of isoprenoid emissions has been observed to occur several days, up to weeks after full leaf expansion and gradually increase until the peak is reached in early summer (Fischbach et al., 2002; Hakola et al., 2001; Karl et al., 2003; Lindfors and Laurila, 2000). As earlier described the full leaf area of deciduous trees was attained around the second week of June in Hyytiälä and may explain the elevated concentrations in June in both summers.

25 We detected six potential cases of elevated isoprene concentrations which could be attributed to biological activity (Fig. 5). There were three maxima in summer 2006: One in mid-June (0.25 ppbv), one in early July (>0.4 ppbv) and one in the end of Au-

---

## Day-time BVOC concentrations in a boreal forest

H. K. Lappalainen et al.

---

[Title Page](#)[Abstract](#)[Introduction](#)[Conclusions](#)[References](#)[Tables](#)[Figures](#)[◀](#)[▶](#)[◀](#)[▶](#)[Back](#)[Close](#)[Full Screen / Esc](#)[Printer-friendly Version](#)[Interactive Discussion](#)

gust (>0.5 ppbv). All the peaks coincided with a rapid increase in the diameter of tree stems (Fig. 5). The first and the third occurred simultaneously with rainfall events, which resulted in stems swelling more than the growth rate alone would indicate. The second occurred at the time when the growth rate was highest. In August the increase in stem diameter after rain fall was most pronounced because the drought had led to over-all shrinkage of the stems. Again in the end of spring 2007, the elevated isoprene concentrations occurred simultaneously with the maxima of the Scots pine shoot and needle growth rates. The peak in August 2007 occurred when soil temperature reached its maximum.

*Monoterpenes.* Like isoprene, the monthly median monoterpene concentrations increased rapidly in June (Fig. 3). The wintertime concentrations were below 0.1 ppbv. In May the concentration increased to 0.13 ppbv and in June the concentration was >0.25 ppbv. Our concentrations were similar to those observed in a Scots pine forest in central Sweden (Janson, 1992) and the fast increase in June could also be seen in the measurements of Hakola et al. (2000).

The monoterpene peak concentrations were higher relative to monoterpene base concentration than the peaks of other compounds relative to their base concentration. The monoterpene peak concentrations were over five times higher than the base level, but for other compounds the largest difference was found for acetaldehyde where the summertime peak of 2006 was about three times higher than the average concentration at that time (Fig. 5). Conifers possess significant monoterpene storage pools in their trunk and needles, which can be volatilized when temperatures are high enough, even though the *de novo* synthesis would be decreased due to lack of photosynthates. For monoterpenes the observed peak concentration could be enhanced by emissions from the storage pools. This could have been the case, especially, for the second peak in August 2006, when we observed high concentrations during the drought with decreased photosynthesis (GPP Fig. 6). Furthermore, all the peaks, except the first one in early July 2006 and the winter peak in early March occurred when air temperature increased above 20°C. The first peak in 2006 appeared right after a rain fall event,

---

## Day-time BVOC concentrations in a boreal forest

H. K. Lappalainen et al.

---

[Title Page](#)[Abstract](#)[Introduction](#)[Conclusions](#)[References](#)[Tables](#)[Figures](#)[◀](#)[▶](#)[◀](#)[▶](#)[Back](#)[Close](#)[Full Screen / Esc](#)[Printer-friendly Version](#)[Interactive Discussion](#)



when GPP and air temperature had a minimum. This concentration peak occurred earlier than the peaks for other compounds that took place when the air temperature increased after the rain fall. The peak concentration in mid-August 2007 occurred when soil temperature was at maximum. The high concentrations during the drought could also result from emissions from the soil (Asensio et al., 2007; Seco et al., 2007).

The monoterpene concentrations started to decline soon after the summer drought had ceased. This might be associated with the leaf drop-out or senescence. Fischbach et al. (2002) have suggested that the capacity of monoterpene emission declines with leaf age similarly to leaf photosynthetic potential. The decrease of concentrations could also fasten by high temperatures and the chemical reactions with O<sub>3</sub>, OH and NO<sub>3</sub> in the air (Atkinson and Arey, 2003). The high monoterpene concentrations in early March are puzzling: emissions should be rather low due to winter dormancy period and low temperatures. One possible explanation is a stress induced by a sudden cold spell, which may have caused an unbalance between the light and dark reactions of photosynthesis, and thus isoprenoid emissions as a consequence of energy overflow to the photosystem II (Penuelas and Munne-Bosch, 2005).

*Relationships between compounds.* The concentrations of the compounds were significantly correlated with each other (Table 2). The peak concentrations occurred simultaneously for all compounds except monoterpenes in June 2006. This happened even if the biological processes synthesizing BVOCs are different. The highest correlation was between methanol and acetone (0.88), which was similar to reported by Karl et al. (2003) and Rinne et al. (2005). Acetone concentration was also well correlated with the concentrations of the other compounds. The correlations of monoterpene concentrations with other compounds were lowest (although >0.45). This is due to the monoterpene peak concentrations not always occurring simultaneously with peak concentrations of other compounds. Our results show that the concentrations can be driven by one or joint environmental factors which, for example, strongly control their volatility (Penuelas and Lucia, 2006). It should also be kept in mind that the observed inter correlation of compounds not only reflect emission processes, but may also relate

## Day-time BVOC concentrations in a boreal forest

H. K. Lappalainen et al.

Title Page

Abstract

Introduction

Conclusions

References

Tables

Figures

◀

▶

◀

▶

Back

Close

Full Screen / Esc

Printer-friendly Version

Interactive Discussion



to the fast atmospheric oxidation processes, where one compound is an intermediate of another like acetone is for monoterpenes (Atkinson and Arey, 2003).

BVOCs emitted by plants can enter the atmosphere via two ways, either via stomatal pores and/or directly through the cuticle. The emissions pathway into the air depends on the chemical character of the compound concerned. Methanol, acetone and acetaldehyde emissions are controlled by stomata more than isoprene and monoterpenes, which can also be released through the cuticle (Niinemets and Reichstein, 2003). It is interesting that the concentrations of all studied compounds peaked during the drought, when GPP was reduced because of stomatal closure. This indicates either some unaccounted sources or different processes regulating emissions under drought stress.

### 3.3 Factors effecting BVOC concentrations in a boreal forest

Of the environmental factors (air temperature ( $T_{air}$ ), soil temperature ( $T_{soil}$ ), radiation (PPFD), photosynthesis (GPP) and total ecosystem respiration (TER) (Fig. 6), all the studied compounds correlated best with day-time air temperature (Table 3). Also the correlations between BVOCs and biological factors (GPP and TER) were always weaker than the correlation with  $T_{air}$ . Soil temperature failed in explaining the concentrations especially in spring (frost) and during the summer drought (low soil water content). Weaker correlation between BVOC and GPP was mainly due to anti-correlation during the summer drought.

In addition to temperature effects on VOC volatility, air temperature is the driving factor behind biological activity in a long time scale (Hari and Kulmala, 2008). It mainly influences the BVOC emissions by effecting photosynthetic capacity and thereby the biosynthesis of isoprenoids in particular. This is in line with the earlier results by Hakola et al. (2000) on the monoterpene and isoprene concentrations.

The terpenoid emissions are often presented as a function of temperature and light intensity (e.g. Monson et al., 1995). We found that BVOC concentrations were best described by an exponent function dependent only on air temperature ( $t$ ),  $y = ae^{(bt)}$

## Day-time BVOC concentrations in a boreal forest

H. K. Lappalainen et al.

Title Page

Abstract

Introduction

Conclusions

References

Tables

Figures

◀

▶

◀

▶

Back

Close

Full Screen / Esc

Printer-friendly Version

Interactive Discussion



(Fig. 7). This relationship could explain 65–67 percent of the variation in methanol, acetone and isoprene concentrations. For acetaldehyde and monoterpenes the degree of explanation was 24 and percent, respectively. This difference may result from the origin of the emissions of these compounds. Acetaldehyde emissions are reported to be related to stress responses (Fall, 2003) and monoterpene emissions may contain significant amounts of material coming from storage pools. These reactions may not be as spontaneously related to the current climatic variation as the emission pathways of the other compounds.

Bertin et al. (1997) has reported similar results for *Quercus ilex* and states that the seasonal variation of monoterpene is rather stable throughout the year, except in springtime when rapid increase in emission during leaf development was reported.

In general the temperature dependence functions of different compounds were quite similar. This was not a surprise since the concentrations were significantly correlated with each other. As earlier discussed it seemed that the concentrations patterns including observed maximums were driven by the same environmental factor(s) (see also Penuelas and Lucia, 2006), even if the biological processes synthesizing BVOCs are different. For example, in conifer species with extensive storage pools temperature drives the volatility of isoprenoids resulting in an exponential increase of the emission rate with temperature Grote and Niinemets (2008).

## 4 Conclusions

The continuous day-time concentration measurements of isoprenoids and three oxygenated BVOCs in a boreal forest site, measured over fifteen months by highly sensitive PTR-MS technique above a Scots pine canopy provide an excellent opportunity to connect the plant biological activity and BVOC emissions. The major part of the measured concentrations originated from emissions from the local forest. Elevated concentrations were associated with seasonal events related to plant physiological turning points and changed environmental conditions. The studied compounds were highly corre-

### Day-time BVOC concentrations in a boreal forest

H. K. Lappalainen et al.

Title Page

Abstract

Introduction

Conclusions

References

Tables

Figures

◀

▶

◀

▶

Back

Close

Full Screen / Esc

Printer-friendly Version

Interactive Discussion



**Day-time BVOC concentrations in a boreal forest**

H. K. Lappalainen et al.

lated each other and were also closely correlated with air temperature. We could not distinguish different biogenic sources, but based on wind direction analyses most of the concentrations were representing the local forest. Some evidence of contributions of rarely studied soil emissions on atmospheric concentrations of VOCs were detected, in particular during springtime when the compounds accumulated into or below snow-pack were released. We also detected no decrease in BVOC concentrations during an exceptional summer drought although photosynthesis was low. We determined temperature dependence function for each compound in a boreal forest canopy scale. These functions were fit to data, which covered periods of summer drought, warm autumn and warm spring. However, it should be underlined that the responses can be different during other specific conditions for example in a cold summer.

*Acknowledgements.* We thank Eero Nikinmaa and Janne Korhonen for providing us daily shoot and needle growth data, Jukka Pumpanen for soil water data and Tiia Grönholm for windrose MatLab code. This study is supported by EU-FP6 EUCAARI project No 036833-2.

**References**

- Atkinson, R. and Arey, J.: Gas-phase tropospheric chemistry of biogenic volatile organic compounds: a review, *Atmos. Environ.*, 37, Suppl. 2, 197–219, 2003. 6260, 6263, 6264
- Asensio, D., Penuelas, J., Llusia, J. J., Ogaya, R., and Filella, I.: Interannual and interseasonal soil CO<sub>2</sub> efflux and VOC exchange rates in a Mediterranean holm oak forest in response to experimental drought, *Soil Biol. Biochem.*, 3, 2471–2484, 2007. 6258, 6263
- Bertin, N., Staudt, M., Hansen, U., Seufert, G., Ciccioli, P., Foster P., Fugit J.-L., and Torres, L.: Diurnal and seasonal course of monoterpene emissions from *Quercus ilex* (L.) under natural conditions application of light and temperature algorithms, *Atmos. Environ.*, 31, 135–144, 1997. 6265
- Bäck, J., Hari, P., Hakola, H., Juurola, E., and Kulmala, M.: Dynamics of monoterpene emissions in *Pinus sylvestris* during early spring, *Boreal Environ. Res.*, 10, 409–424, 2005. 6249
- Duursma, R.A., Kolari, P., Perämäki, M., Nikinmaa, E., Hari, P., Delzon, S., Loustau, D., Ilvesniemi, H., Pumpanen, J., and Mäkelä, A.: Predicting the decline in daily maximum transpira-

[Title Page](#)[Abstract](#)[Introduction](#)[Conclusions](#)[References](#)[Tables](#)[Figures](#)[◀](#)[▶](#)[◀](#)[▶](#)[Back](#)[Close](#)[Full Screen / Esc](#)[Printer-friendly Version](#)[Interactive Discussion](#)

---

**Day-time BVOC  
concentrations in a  
boreal forest**H. K. Lappalainen et al.

---

[Title Page](#)[Abstract](#)[Introduction](#)[Conclusions](#)[References](#)[Tables](#)[Figures](#)[◀](#)[▶](#)[◀](#)[▶](#)[Back](#)[Close](#)[Full Screen / Esc](#)[Printer-friendly Version](#)[Interactive Discussion](#)

tion rate of two pine stands during drought based on constant minimum leaf water potential and plant hydraulic conductance, *Tree Physiol.*, 28, 265–276, 2008. 6253

Fall, R.: Abundant Oxygenates in the Atmosphere: A Biochemical perspective, *Chem. Rev.*, 103, 4941–4951, 2003. 6250, 6258, 6265

5 Fischbach, R. J., Staudt, M., Zimmer, I., Rambal, S., and Schnitzler, J.-P.: Seasonal pattern of monoterpene synthase activities in leaves of the evergreen tree *Quercus ilex*, *Physiol. Plantarum*, 114, 354–360, 2002. 6261, 6263

Folkers, A., Hüve, K., Ammann, C., Dindorf, T., Kesselmeier, J., Kleist, E., Kuhn, U., Uerlings, R., and Wildt, J.: Methanol emissions from deciduous tree species: dependence on temperature and light intensity, *Plant Biol.*, 10, 65–75 2008. 6250

10 Galbally, I. E. and Kirstine, W.: The production of methanol by flowering plants and the global cycle of methanol, *J. Atmos. Chem.*, 43, 195–229, 2002. 6249, 6257

Goldstein, A. H., Gunnar W., and Schade, G. W.: Quantifying biogenic and anthropogenic contributions to acetone mixing ratios in a rural environment, *Atmos. Environ.*, 34, 4997–5006, 2000. 6260

15 Graus, M., Schnitzler, J.-P., Hansel, A., Cojocariu, C., Rennenberg, H., Wisthaler, A., and Kreuzwieser, J.: Transient Release of Oxygenated Volatile Organic Compounds during Light-Dark Transitions in Grey Poplar Leaves, *Plant Physiol.*, 135, 1967–1975, 2004. 6259

20 Guenther, A. B., Monson, R. K., and Fall, R.: Isoprene and monoterpene emission rate variability: Observations with *Eucalytus* and emission rate algorithm development, *J. Geophys. Res.*, 96, 10799–10808, 1991. 6250

Guenther, A., Hewitt, C. N., Erickson, D., Fall, R., Geron, C., Graedel, T., Harley, P., Klinger, L., Lerdau, M., Mckay, W. A., Pierce, T., Scholes, B., Steinbrecher, R., Tallamraju, R., Taylor, J., and Zimmerman, P.: A global model of natural volatile organic compounds emissions, *J. Geophys. Res.*, 100, 8873–8892, 1995. 6248

25 Guenther A.: Seasonal and spatial variations in natural volatile organic compound emissions, *Ecol. Appl.*, 7, 34–45, 1997. 6250

Guenther, A., Geron, C., Pierce, T., Lamb, B., Harley, P., and Fall, R.: Natural emissions of non-methane volatile organic compounds, carbon monoxide, and oxides of nitrogen from North America, *Atmos. Environ.*, 34, 2205–2230, 2000.

30 Grote, R. and Niinemets, U.: Modeling volatile isoprenoid emissions - a story with split ends, *Plant. Biol. (Stuttg)*, 10(1), 8–28, 2008. 6250, 6265

Lauril, A. , Hakola, H., Laurila, T., Rinne, J., and Puhto, K.: The ambient concentrations of

biogenic hydrocarbons at a northern European, boreal site, *Atmos. Environ.*, 34, 4971–4982, 2000. 6249, 6261, 6264

Hakola, H., Laurila, T., Lindfors, V., Hellén, H., Gaman, A., and Rinne, J.: Variation of the VOC emission rates of birch species during the growing season, *Boreal Environ. Res.*, 6, 237–249, 2001. 6261

Hari, P. and Kulmala, M.: Station for measuring ecosystem-atmosphere relations (SMEAR II), *Boreal Environ. Res.*, 10, 315–322, 2005. 6251

Hari, P. and Kulmala, L.: Boreal forest and climate change, *Advances in Global Change Research*, 34, 582 pp., Springer, 2008. 6264

Ivesniemi, H. and Liu, C.: Biomass distribution in a young Scots pine stand, *Boreal Environ. Res.*, 6, 3–8, 2001. 6251

Janson, R.: Monoterpene concentrations in and above a forest of scots pine, *J. Atmos. Chem.*, 14, 385–394, 1992. 6262

Janson, R., De Serves, C., and Romero, R.: Emission of isoprene and carbonyl compounds from a boreal forest and wetland in Sweden, *Agr. Forest Meteorol.*, 98–99, 671–681, 1999. 6248

Janson, R. and de Serves, C.: Acetone and monoterpene emissions from boreal forest in northern Europe, *Atmos. Environ.*, 35, 4629–4637, 2001. 6248, 6249, 6260

Jardine, K., Harley, P., Karl, T., Guenther, A., Lerdau, M., and Mak, J. E.: Plant physiological and environmental controls over the exchange of acetaldehyde between forest canopies and the atmosphere, *Biogeosciences*, 5, 1559–1572, 2008, <http://www.biogeosciences.net/5/1559/2008/>. 6249

Karl, T., Guenther, A., Spirig, C., Hansel, A., and Fall, R.: Seasonal variation of biogenic VOC emissions above a mixed hardwood forest in northern Michigan, *Geophys. Res. Lett.*, 30, 2186, 2003. 6257, 6258, 6260, 6261, 6263

Kourtchev, I., Ruuskanen, T. M., Keronen, P., Sogcheva, L., Maso, D. M., Chi, X., Vermeyerl, R., Kulmala, M., Maenhaut, W., and Claeys, M.: Determination of isoprene and  $\alpha$ -/ $\beta$ -pinene oxidation products in boreal forest aerosols from Hyytiälä, Finland: diurnal variations and possible links with particle formation events, *Plant Biol.*, 10, 138–149, 2008. 6249

Kreuzwieser, J., Harren, F. J. M., Laarhoven, L. J. J., Boamfa, I., te Lintel-Hekkert, S., Scheerer, U., Hüglin, C., and Rennenberg, H.: Acetaldehyde emission by the leaves of trees – correlation with physiological and environmental parameters, *Physiol. Plantarum*, 113, 41–49, 2001.

**Day-time BVOC concentrations in a boreal forest**

H. K. Lappalainen et al.

Title Page

Abstract

Introduction

Conclusions

References

Tables

Figures

◀

▶

◀

▶

Back

Close

Full Screen / Esc

Printer-friendly Version

Interactive Discussion



- Kolari, P., Lappalainen, H. K., Hänninen, H., and Hari, P.: Relationship between temperature and the seasonal course of photosynthesis in Scots pine at northern timberline and in southern boreal zone, *Tellus B*, 59, 542–552, 2007. 6255
- 5 Kulmala, M., Riipinen, I., Sipilä, M., Manninen, H. E., Petäjä, T., Junninen, H., Dal Maso, M., Mordas, G., Mirme, A., Vana, M., Hirsikko, A., Laakso, L., Harrison, R. M., Hanson, I., Leung, C., Lehtinen, K., and Kerminen V.-M.: Toward Direct Measurement of Atmospheric Nucleation, *Science*, 318, 89–92, 2007. 6249
- 10 Kulmala, M., Suni, T., Lehtinen, K. E. J., Dal Maso, M., Boy, M., Reissell, A., Rannik, Ü., Aalto, P., Keronen, P., Hakola, H., Bäck, J., Hoffmann, T., Vesala, T., and Hari, P.: A new feedback mechanism linking forests, aerosols, and climate, *Atmos. Chem. Phys.*, 4, 557–562, 2004, <http://www.atmos-chem-phys.net/4/557/2004/>. 6249
- Lappalainen, H. and Heikinheimo, M.: Relations between climate and plant phenology. Part 1. survey of plant phenological observations in Finland from 1896 to 1965, *Meteorological Publications*, 20, 34 pp., 1992. 6258, 6259
- 15 Lindinger, W., Hansel, A., and Jordan, A.: On-line monitoring of volatile organic compounds at pptv levels by means of Proton-Transfer-Reaction Mass Spectrometry (PTR-MS) – Medical applications, food control and environmental research, *Int. J. Mass Spectrom.*, 173, 191–241, 1998. 6250
- 20 Linkosalo, T. and Lechowicz, M.: Twilight far-red treatment advances leaf bud burst of silver birch (*Betula pendula*), *Tree Physiol.*, 26, 1249–1256, 2006. 6255
- Linkosalo, T., Lappalainen, H. K., and Hari, P.: A comparison of phenological models of leaf bud burst and flowering of boreal trees using independent observations, *Tree Physiol.*, 28, 1873–1882, 2008. 6255
- Lindfors, V. and Laurila, T.: Biogenic volatile organic compound (VOC) emissions from forests in Finland, *Boreal Environ. Res.*, 5, 95–113, 2000. 6261
- 25 Loreto, F., Kesselmeier, J., and Schnitzler, J.-P.: Volatile organic compounds in the biosphere-atmosphere system: a reface, *Plant Biol.*, 10, 2–7, 2008. 6259
- Monson, R., Lerdau, M., Sharkey, T., and Schimel, D.: Biological aspects of construction organic compound emission inventories, *Atmos. Environ.*, 29, 2989–3002, 1995. 6250, 6264
- 30 Mäkelä, A., Hari, P., Berninger, F., Hänninen, H., and Nikinmaa, E.: Acclimation of photosynthetic capacity in Scots pine to the annual cycle temperature, *Tree Physiol.*, 24, 369–378, 2004. 6250, 6254
- Mäkelä, A., Kolari, P., Karimäki, J., Nikinmaa, E., Perämäki, M., and Hari, P.: Modelling five

---

**Day-time BVOC concentrations in a boreal forest**H. K. Lappalainen et al.

---

[Title Page](#)[Abstract](#)[Introduction](#)[Conclusions](#)[References](#)[Tables](#)[Figures](#)[◀](#)[▶](#)[◀](#)[▶](#)[Back](#)[Close](#)[Full Screen / Esc](#)[Printer-friendly Version](#)[Interactive Discussion](#)

years of weather-driven variation of GPP in a boreal forest, *Agr. Forest Meteorol.*, 139, 382–398, 2006. 6253

Niinemets, U. and Reichstein, M.: Controls on the emission of plant volatiles through stomata: Differential sensitivity of emission rates to stomatal closure explained, *J. Geophys. Res.*, 108, doi:10.1029/2002JD002620, 2003. 6264

Niinemets, U., Tenhunen, J. D., Harley, P. C., and Steinbrecher, R.: A model of isoprene emission based on energetic requirements for isoprene synthesis and leaf photosynthetic properties for *Liquidambar* and *Quercus*, *Plant Cell Environ.*, 22, 1319–1335, 1999. 6249

Owen, S. M. and Penuelas, J.: Opportunistic emissions of volatile isoprenoids, *Trends Plant Sci.*, 10, 420–426, 2005. 6249

Penuelas, J. and Lucia, J.: Plant VOC emissions: making use of the unavoidable, *Trends Ecol. Evol.*, 19, 402–404, 2004. 6263, 6265

Penuelas, J. and Munne-Bosch, S.: Isoprenoids: an evolutionary pool for photoprotection, *Trends Plant Sci.*, 10, 166–169, 2005. 6263

Oquist, G. and Huner, N.: Photosynthesis of overwintering evergreen plants, *Annu. Rev. Plant Biol.*, 54, 329–355, 2003. 6250, 6254

Rinne, J., Ruuskanen, T. M., Reissell, A., Taipale, R., Hakola, H., and Kulmala, M.: On-line PTR-MS measurements of atmospheric concentrations of volatile organic compounds in a European boreal forest ecosystem, *Boreal Environ. Res.*, 10, 425–436, 2005. 6252, 6263

Rinne, J., Taipale, R., Markkanen, T., Ruuskanen, T. M., Hellén, H., Kajos, M. K., Vesala, T., and Kulmala, M.: Hydrocarbon fluxes above a Scots pine forest canopy: measurements and modeling, *Atmos. Chem. Phys.*, 7, 3361–3372, 2007, <http://www.atmos-chem-phys.net/7/3361/2007/>. 6248, 6256

Ruuskanen, T. M., Taipale, R., Rinne, J., Kajos, M. K., Hakola, H., and Kulmala, M.: Quantitative long-term measurements of VOC concentrations by PTR-MS: annual cycle at a boreal forest site, *Atmos. Chem. Phys. Discuss.*, 9, 81–134, 2009, <http://www.atmos-chem-phys-discuss.net/9/81/2009/>. 6252

Sarvas, R.: Investigations on the annual cycle of development of forest trees. Active period, *Communicationes Instituti Forestalis Fenniae*, 76, 1–110, 1972. 6255

Schade, G. W. and Goldstein, A. H.: Seasonal measurements of acetone and methanol: Abundances and implications for atmospheric budgets, *Global Biogeochem. Cy.*, 20, GB1011, doi:10.1029/2005GB002566, 2006. 6258

Seco, R., Penuelas, J., and Filella, I.: Short-chain oxygenated VOCs: Emissions and uptake by

**Day-time BVOC concentrations in a boreal forest**

H. K. Lappalainen et al.

Title Page

Abstract

Introduction

Conclusions

References

Tables

Figures

◀

▶

◀

▶

Back

Close

Full Screen / Esc

Printer-friendly Version

Interactive Discussion





plants and atmospheric sources, sinks, and concentrations, *Atmos. Environ.*, 41, 2477–2499, 2007. 6258, 6263

Sevanto, S., Hölttä, T., Markkanen, T., Perämäki, M., Nikinmaa, E., and Vesala, T.: Relationships between diurnal xylem diameter variation and environmental factors in Scots pine, *Boreal Environ. Res.*, 10, 447–458, 2005. 6254

Suni, T., Berninger, F., Markkanen, T., Keronen, P., Rannik, U., and Vesala, T.: Interannual variability and timing of growing-season CO<sub>2</sub> exchange in a boreal forest, *J. Geophys. Res.*, 108, D9, 4265, doi:10.1029/2002JD002381, 2003. 6251

Taipale, R., Ruuskanen, T. M., Rinne, J., Kajos, M. K., Hakola, H., Pohja, T., and Kulmala, M.: Technical Note: Quantitative long-term measurements of VOC concentrations by PTR-MS – measurement, calibration, and volume mixing ratio calculation methods, *Atmos. Chem. Phys.*, 8, 6681–6698, 2008, <http://www.atmos-chem-phys.net/8/6681/2008/>. 6252

Tingey, D., Manning, M., Grothaus, L., and Burns, W.: Influence of light and temperature on monoterpene emission rates from slash pine, *Plant. Physiol.*, 65, 797–801, 1980. 6250

Tunved, P., Korhonen, H., Strom, J., Hansson, H. C., Lehtinen, K. E. J., and Kulmala, M.: Is nucleation capable of explaining observed aerosol integral number increase during southerly transport over Scandinavia?, *Tellus B*, 58, 129–140, 2006. 6249

Vesala, T., Haataja, J., Aalto, P., et al.: Long-term field measurements of atmosphere-surface interactions in boreal forest ecology, micrometeorology, aerosol physics and atmospheric chemistry, *Trends in Heat, Mass and Momentum Transfer*, 4, 17–35, 1998. 6253

Warneke, C., Karl, T., Judmaier, H., Hansel, A., Jordan, A., Lindinger, W., and Crutzen, P. J.: Acetone, methanol and other partially oxidized volatile organic emissions from dead plant matter by abiological processes: significance for atmospheric HO<sub>x</sub> chemistry, *Global Biogeochem. Cy.*, 13 1, 9–17, 1999. 6258

**Day-time BVOC concentrations in a boreal forest**

H. K. Lappalainen et al.

Title Page

Abstract

Introduction

Conclusions

References

Tables

Figures

◀

▶

◀

▶

Back

Close

Full Screen / Esc

Printer-friendly Version

Interactive Discussion



## Day-time BVOC concentrations in a boreal forest

H. K. Lappalainen et al.

**Table 1.** The time windows used for calculating the day-time median concentrations at the seasonal and monthly scale.

Season	Months	Time window
Summer 2006, 2007	June	07:00 a.m. – 18:00 p.m.
Summer 2006, 2007	July	07:00 a.m. – 18:00 p.m.
Summer 2006, 2007	August	07:00 a.m. – 18:00 p.m.
Autumn 2006	September	09:00 a.m. – 16:00 p.m.
Winter 2006	December	11:00 a.m. – 16:00 p.m.
Winter 2007	January	11:00 a.m. – 16:00 p.m.
Winter 2007	February	11:00 a.m. – 18:00 p.m.
Spring 2007	March	09:00 a.m. – 17:00 p.m.
Spring 2007	April	09:00 a.m. – 17:00 p.m.
Spring 2007	May	09:00 a.m. – 17:00 p.m.

Title Page

Abstract

Introduction

Conclusions

References

Tables

Figures

◀

▶

◀

▶

Back

Close

Full Screen / Esc

Printer-friendly Version

Interactive Discussion



**Day-time BVOC  
concentrations in a  
boreal forest**

H. K. Lappalainen et al.

**Table 2.** Correlation between different compounds (day-time medians) during the period between 1 June 2006 to 31 May 2007, winter months due to low biological activity omitted from the analysis ( $n=333$ ).

–	M45	M59	M69	M137
M33	0.72	0.88	0.74	0.52
M45	–	0.81	0.69	0.47
M59	–	–	0.83	0.62
M69	–	–	–	0.66

[Title Page](#)[Abstract](#)[Introduction](#)[Conclusions](#)[References](#)[Tables](#)[Figures](#)[I◀](#)[▶I](#)[◀](#)[▶](#)[Back](#)[Close](#)[Full Screen / Esc](#)[Printer-friendly Version](#)[Interactive Discussion](#)

## Day-time BVOC concentrations in a boreal forest

H. K. Lappalainen et al.

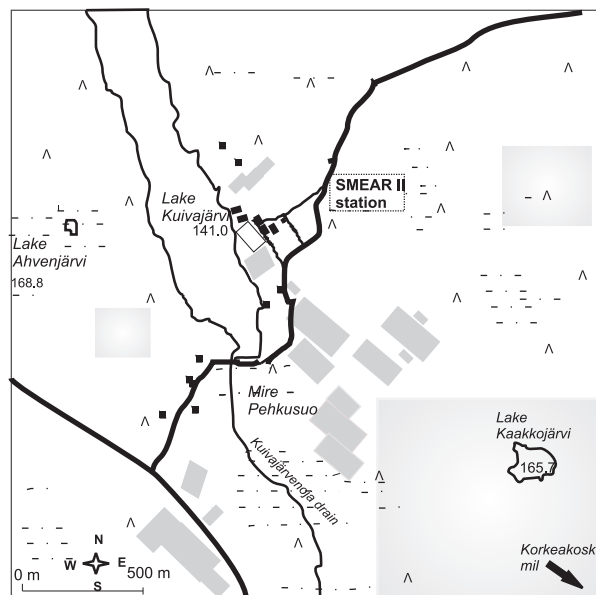
**Table 3.** Correlation between different compounds and air temperature ( $T_{air}$ ), soil temperature in the humus layer ( $T_{hum}$ ), photosynthetic active radiation (PPFD), photosynthesis (GPP), total ecosystem respiration (TER) during 1 June 2006 – 31 August 2007 (December-February-January omitted,  $n=395$ ).

	$T_{air}$	$T_{hum}$	PPFD	GPP	TER
Methanol	0.74	0.62	0.52	0.55	0.60
Acetaldehyde	0.42	0.32	0.13	0.11	0.20
Acetone	0.75	0.67	0.33	0.41	0.57
Isoprene	0.72	0.70	0.32	0.45	0.60
Monoterpenes	0.50	0.52	0.13	0.27	0.46

[Title Page](#)
[Abstract](#)
[Introduction](#)
[Conclusions](#)
[References](#)
[Tables](#)
[Figures](#)
[I◀](#)
[▶I](#)
[◀](#)
[▶](#)
[Back](#)
[Close](#)
[Full Screen / Esc](#)
[Printer-friendly Version](#)
[Interactive Discussion](#)


**Day-time BVOC  
concentrations in a  
boreal forest**

H. K. Lappalainen et al.

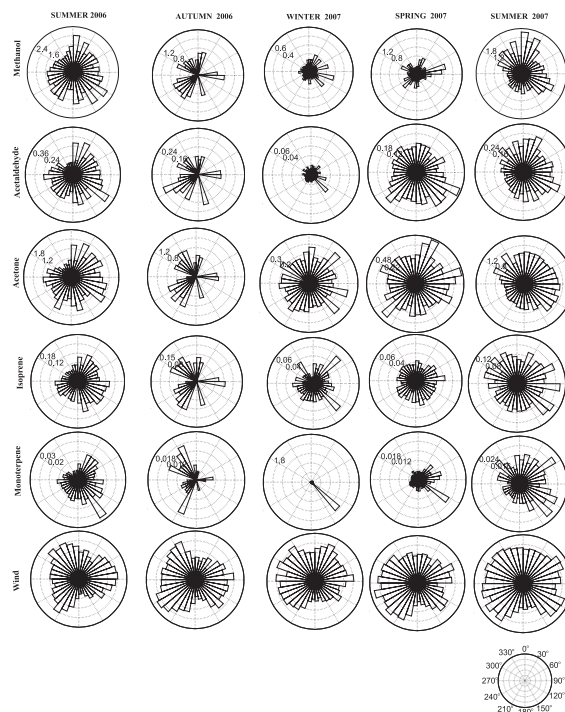


**Fig. 1.** A 4 km<sup>2</sup> map of the SMEAR II station; forest harvesting areas are marked with light gray squares, fields with dark gray rectangles, buildings with black squares, wetlands and mires with cross-hatching and forest with  $\Delta$ .

[Title Page](#)[Abstract](#)[Introduction](#)[Conclusions](#)[References](#)[Tables](#)[Figures](#)[◀](#)[▶](#)[◀](#)[▶](#)[Back](#)[Close](#)[Full Screen / Esc](#)[Printer-friendly Version](#)[Interactive Discussion](#)

## Day-time BVOC concentrations in a boreal forest

H. K. Lappalainen et al.



**Fig. 2.** Seasonal wind roses of wind (24 h – hourly data, 8.4 m) at the SMEAR-II station in summer (June–July–August, 2006), autumn (September, October, November 2006), winter (January–February, 2007), in spring (March, April, May, 2007) and summer 2007 (June–July–August, 2007).

Title Page

Abstract

Introduction

Conclusions

References

Tables

Figures

◀

▶

◀

▶

Back

Close

Full Screen / Esc

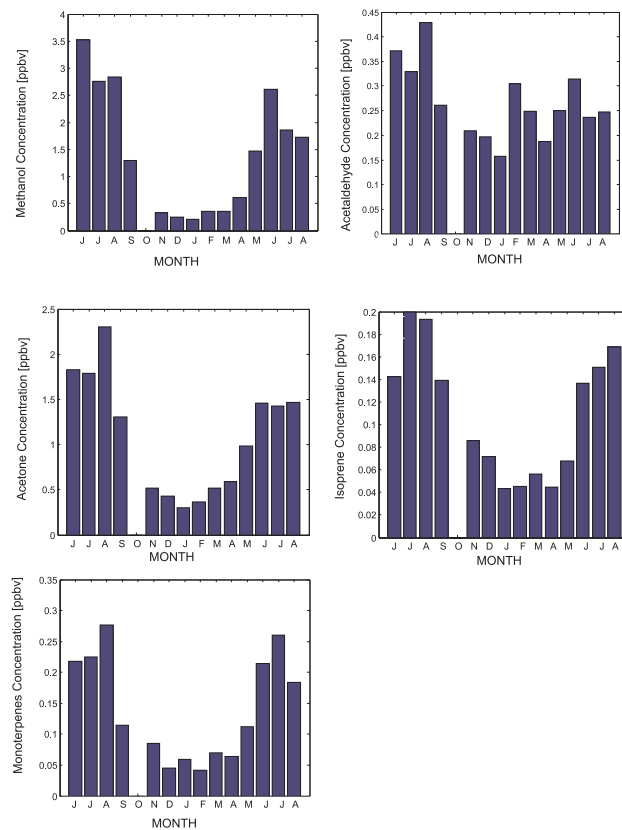
Printer-friendly Version

Interactive Discussion



**Day-time BVOC concentrations in a boreal forest**

H. K. Lappalainen et al.

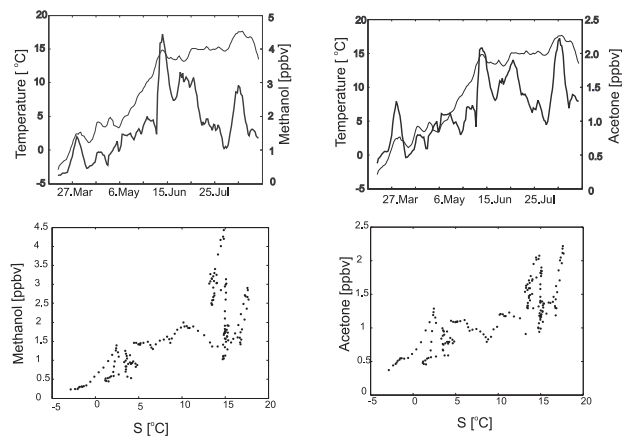


**Fig. 3.** Monthly day-time median values of BVOC concentrations at SMEAR II stations between June 2006 and August 2007.

[Title Page](#)[Abstract](#)[Introduction](#)[Conclusions](#)[References](#)[Tables](#)[Figures](#)[◀](#)[▶](#)[◀](#)[▶](#)[Back](#)[Close](#)[Full Screen / Esc](#)[Printer-friendly Version](#)[Interactive Discussion](#)

## Day-time BVOC concentrations in a boreal forest

H. K. Lappalainen et al.



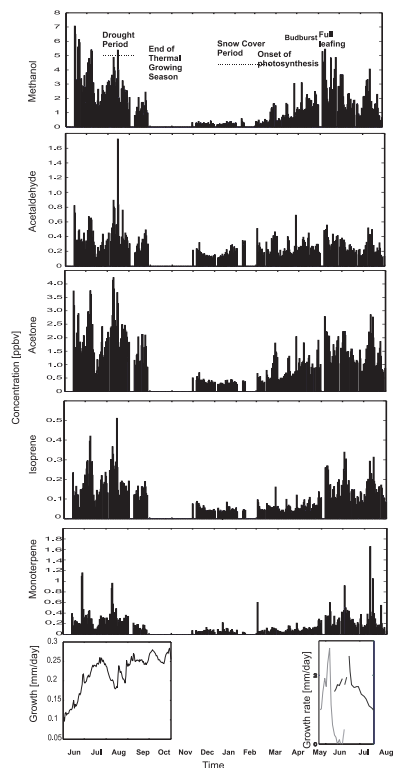
**Fig. 4.** A 8-day running median of BVOC concentrations versus state of development (S) of methanol (Correlation 0.72) and acetone (Correlation 0.81) from 15 March to August 2007.

[Title Page](#)[Abstract](#)[Introduction](#)[Conclusions](#)[References](#)[Tables](#)[Figures](#)[◀](#)[▶](#)[◀](#)[▶](#)[Back](#)[Close](#)[Full Screen / Esc](#)[Printer-friendly Version](#)[Interactive Discussion](#)



## Day-time BVOC concentrations in a boreal forest

H. K. Lappalainen et al.



**Fig. 5.** A day-time median of BVOC concentrations (five top panels) during June 2006 – May 2007 and the secondary growth of Scots pine stem (1.3 m) 1 June – 30 October 2006 and Scots pine shoot (blue) and needle (green) growthrate 21 May – 8 August 2007 (sixth panel). The exact days for the specific events marked in the figure are the following: Drought period 20 July – 31 August, end of growing season 24 October, snow cover period 15 January – 27 March, onset of biological activity 15 March, onset of thermal growing season 6 May and birch budburst (*Betula*) 14 May.

Title Page

Abstract

Introduction

Conclusions

References

Tables

Figures

◀

▶

◀

▶

Back

Close

Full Screen / Esc

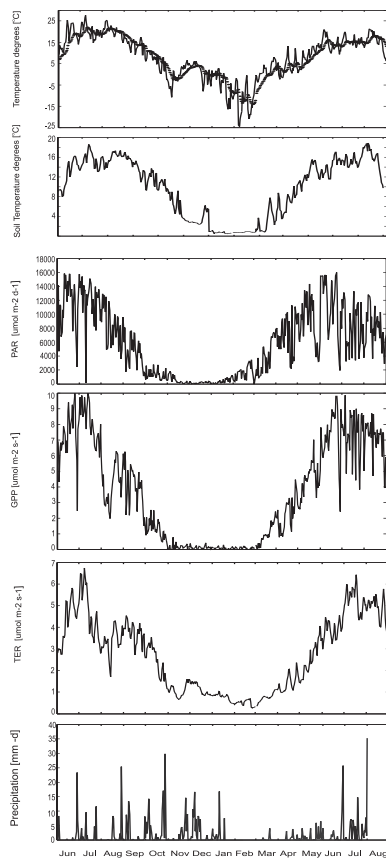
Printer-friendly Version

Interactive Discussion



## Day-time BVOC concentrations in a boreal forest

H. K. Lappalainen et al.

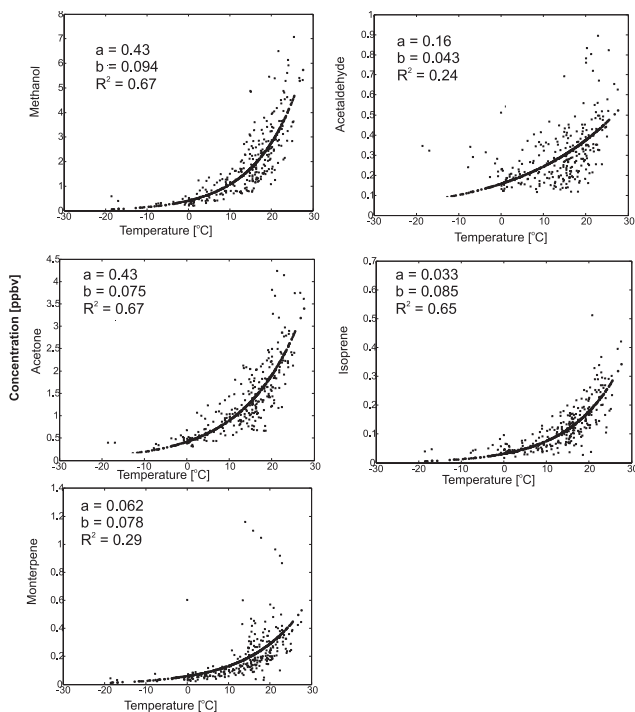


**Fig. 6.** Seasonal changes of meteorological factors and ecosystem gas exchange during the period 1 June 2006 – 31 August 2007 at SMEAR II station. In the top panel the thick line is the  $S$  parameter (see Eq. 1) and the thin line is the air temperature. The values presented are the day-time daily medians.

[Title Page](#)[Abstract](#)[Introduction](#)[Conclusions](#)[References](#)[Tables](#)[Figures](#)[◀](#)[▶](#)[◀](#)[▶](#)[Back](#)[Close](#)[Full Screen / Esc](#)[Printer-friendly Version](#)[Interactive Discussion](#)

**Day-time BVOC concentrations in a boreal forest**

H. K. Lappalainen et al.



**Fig. 7.** The BVOC concentrations as a function of air temperature. The fitted curves were exponent functions,  $y = ae^{(bt)}$ , where  $t$  = air temperature.

[Title Page](#)[Abstract](#)[Introduction](#)[Conclusions](#)[References](#)[Tables](#)[Figures](#)[◀](#)[▶](#)[◀](#)[▶](#)[Back](#)[Close](#)[Full Screen / Esc](#)[Printer-friendly Version](#)[Interactive Discussion](#)