

Organic components  
from PMF of Q-AMS  
data

I. M. Ulbrich et al.

# Interpretation of organic components from positive matrix factorization of aerosol mass spectrometric data

I. M. Ulbrich<sup>1,2</sup>, M. R. Canagaratna<sup>3</sup>, Q. Zhang<sup>4</sup>, D. R. Worsnop<sup>3</sup>, and  
J. L. Jimenez<sup>1,2</sup>

<sup>1</sup>Cooperative Inst. for Research in the Environmental Sciences (CIRES), Boulder, CO, USA

<sup>2</sup>Department of Chemistry and Biochemistry, University of Colorado, Boulder, CO, USA

<sup>3</sup>Aerodyne Research, Inc., Billerica, MA, USA

<sup>4</sup>Atmos. Sci. Res. Center, University at Albany, State University of New York, Albany, NY, USA

Received: 27 February 2008 – Accepted: 3 March 2008 – Published: 9 April 2008

Correspondence to: J. L. Jimenez (jose.jimenez@colorado.edu)

Published by Copernicus Publications on behalf of the European Geosciences Union.

Title Page

Abstract

Introduction

Conclusions

References

Tables

Figures

⏪

⏩

◀

▶

Back

Close

Full Screen / Esc

Printer-friendly Version

Interactive Discussion



## Abstract

The organic aerosol (OA) dataset from an Aerodyne Aerosol Mass Spectrometer (Q-AMS) collected at the Pittsburgh Air Quality Study in September 2002 was analyzed for components with Positive Matrix Factorization (PMF). Three components – hydrocarbon-like organic aerosol OA (HOA), a highly-oxygenated OA (OOA-I) that correlates well with sulfate, and a less-oxygenated, semi-volatile OA (OOA-II) that correlates well with nitrate and chloride – are identified and interpreted as primary combustion emissions, aged SOA, and semivolatile, less aged SOA, respectively. The complexity of interpreting the PMF solutions of unit mass resolution (UMR) AMS data is illustrated by a detailed analysis of the solutions as a function of number of components and rotational state. A public database of AMS spectra has been created to aid this type of analysis. A sensitivity analysis with realistic synthetic data is also used to characterize the behavior of PMF for choosing the best number of factors, rotations of non-unique solutions, and the retrievability of more (or less) correlated factors. The ambient and synthetic data indicate that the variation of the PMF quality of fit parameter ( $Q$ , a normalized chi-squared metric) vs. number of factors in the solution is useful to identify the minimum number of factors, but more detailed analysis and interpretation is needed to choose the best number of factors. The maximum value of the rotational matrix is not useful for determining the best number of factors. In synthetic datasets, factors are “split” into two or more components when solving for more factors than were used in the input. Elements of the “splitting” behavior are observed in solutions of real datasets with several factors. Significant structure remains in the residual of the real dataset after physically-meaningful factors have been assigned and an unrealistic number of factors would be required to explain the remaining variance. This residual structure appears to be due to variability in the spectra of the components (especially OOA-II in this case), which is likely to be a key limit of the retrievability of components from AMS datasets using PMF and similar methods that need to assume constant component mass spectra. Methods for characterizing and dealing with this variability

ACPD

8, 6729–6791, 2008

## Organic components from PMF of Q-AMS data

I. M. Ulbrich et al.

Title Page

Abstract

Introduction

Conclusions

References

Tables

Figures

◀

▶

◀

▶

Back

Close

Full Screen / Esc

Printer-friendly Version

Interactive Discussion



are needed. Values of the rotational parameter (FPEAK) near zero appear to be most appropriate for these datasets. Interpretation of PMF factors must be done carefully. Synthetic data indicate that PMF internal diagnostics and similarity to available source component spectra together are not sufficient for identifying factors. It is critical to use correlations between factor time series and external measurement time series to support factor interpretations. Components with <5% of the mass or with high correlation ( $R>0.9$ ) with other components are suspect and should be interpreted with care. Results from this study may be useful for interpreting the PMF analysis of data from other aerosol mass spectrometers.

## 1 Introduction

Fine particles have important effects on human health, visibility, climate forcing, and deposition of acids and nutrients to ecosystems and crops. Organic species represent an important fraction of the submicron aerosol at most locations (Kanakidou et al., 2005; Zhang et al., 2007a). Typically referred to as organic aerosols (OA), they are the sum of multiple primary and secondary sources that can evolve due to aging processes. Apportioning organic aerosols into their sources and components correctly is a critical step towards enabling efficient control strategies and model representations.

The organic source apportionment problem has been approached by several techniques. Turpin and Huntzicker (1991) utilized the ratio between elemental carbon and organic carbon (EC/OC) from filter samples to estimate primary and secondary OA. Schauer et al. (1996) used molecular markers with a chemical mass balance (CMB) approach to apportion OA extracted from filters and analyzed by GC-MS. Several sources with unique markers can be identified, but source profiles must be known a priori, sources without unique markers are not easily separated, and only primary OA sources are identified. Szidat et al. (2006) have separated anthropogenic and biogenic OA based on water solubility and  $^{14}\text{C}/^{12}\text{C}$  ratios and found a major biogenic influence in Zurich, Switzerland. The technique has very low time resolution (3–5 days) and can

### Organic components from PMF of Q-AMS data

I. M. Ulbrich et al.

Title Page

Abstract

Introduction

Conclusions

References

Tables

Figures

◀

▶

◀

▶

Back

Close

Full Screen / Esc

Printer-friendly Version

Interactive Discussion



identify only a few categories of sources. Traditional OA filter measurements suffer from low time resolution (several hrs. to days) and positive and negative artifacts (Turpin et al., 2000).

The last 15 years have seen the development of a new generation of real-time aerosol chemical instrumentation, most commonly based on mass spectrometry or ion chromatography (Sullivan et al., 2004; DeCarlo et al., 2006; Williams et al., 2006; Canagaratna et al., 2007; Murphy, 2007). Current real-time instruments can produce data over timescales of seconds to minutes and have reduced sampling artifacts compared to filters. Single-particle mass spectrometers (e.g. PALMS, ATOFMS, SPLAT) have used particle classification systems to group particles based on composition or other characteristics (Murphy et al., 2003). A fast GC-MS system (TAG) has been developed that may allow the application of the molecular marker technique with much faster time resolution than previously possible (Williams et al., 2006). However GC-MS as typically applied discriminates against oxygenated organic aerosols (OOA) (Huffman et al., 2008<sup>1</sup>), which is the dominant ambient OA component (Zhang et al., 2007a), and thus may limit the applicability of this technique. It is highly desirable to perform source apportionment based on the composition of the whole OA. This information cannot be obtained at the molecular level with current techniques, however several techniques are starting to characterize the types/groups of species in bulk OA (Fuzzi et al., 2001; Russell, 2003; Zhang et al., 2005a, c).

The Aerodyne Aerosol Mass Spectrometer (AMS) belongs to the category of instruments that seeks to measure and characterize the whole OA. It has been designed to quantitatively measure the non-refractory components of submicron aerosol with high time resolution (Jayne et al., 2000; Jimenez et al., 2003) and produces ensemble average spectra for organic species every few seconds to minutes (Allan et al., 2004).

<sup>1</sup>Huffman, J. A., Aiken, A. C., Docherty, K., Ulbrich, I., Jayne, J. T., Onasch, T. B., Trimborn, A., Worsnop, D., Ziemann, P. J., and Jimenez, J. L.: Volatility of primary and secondary organic aerosols in the field contradicts current model representations, *Environ. Sci. Technol.*, in preparation, 2008.

---

## Organic components from PMF of Q-AMS data

I. M. Ulbrich et al.

---

[Title Page](#)[Abstract](#)[Introduction](#)[Conclusions](#)[References](#)[Tables](#)[Figures](#)[◀](#)[▶](#)[◀](#)[▶](#)[Back](#)[Close](#)[Full Screen / Esc](#)[Printer-friendly Version](#)[Interactive Discussion](#)

---

**Organic components  
from PMF of Q-AMS  
data**I. M. Ulbrich et al.

---

[Title Page](#)[Abstract](#)[Introduction](#)[Conclusions](#)[References](#)[Tables](#)[Figures](#)[⏪](#)[⏩](#)[◀](#)[▶](#)[Back](#)[Close](#)[Full Screen / Esc](#)[Printer-friendly Version](#)[Interactive Discussion](#)

Several groups have attempted different methods to deconvolve the OA spectral matrix measured by a Q-AMS (Lanz et al., 2007; Marcolli et al., 2006; Zhang et al., 2005a, c, 2007a). Zhang et al. (2005a) first showed that information on OA sources could be extracted from linear decomposition of AMS spectra by using a custom principal component analysis (CPCA) method applied to OA data from the Pittsburgh Supersite from 2002. The resulting factors were identified as hydrocarbon-like organic aerosol (HOA, a reduced OA) and oxygenated organic aerosol (OOA) and were strongly linked to primary and secondary organic aerosol (POA and SOA), respectively, based on comparison of their spectra to known sources and their time series to other tracers. OOA was found to dominate OA (~2/3 of the OA mass was OOA), in contrast to previous results at this location (Cabada et al., 2004). Zhang et al. (2007a) used the Multiple Component Analysis technique (MCA, an expanded version of the CPCA) for separating more than two factors in datasets from 37 field campaigns in the Northern Hemisphere and found that the sum of several OOAs comprises more of the organic aerosol mass than HOA at most locations and times, and that in rural areas the fraction of HOA is usually very small. Marcolli et al. (2006) applied a hierarchical cluster analysis to Q-AMS data from the New England Air Quality Study (NEAQS) from 2002. Clusters in this data represented biogenic VOC oxidation products, highly oxidized OA, and other small categories. Lanz et al. (2007) applied Positive Matrix Factorization (PMF) (Paatero and Tapper, 1994; Paatero, 1997) to the organic fraction of a Q-AMS dataset from Zurich in the summer of 2005. The six factors identified in this study were HOA, two types of OOA (a highly-oxidized, thermodynamically stable type called OOA-I that correlates well with aerosol sulfate; and a less-oxidized, semi-volatile type called OOA-II that correlates well with aerosol nitrate), charbroiling, wood burning, and a minor source that may be influenced by food cooking. Lanz et al. (2008) used a hybrid receptor model (combining CMB-style a priori information of factor profiles with the bilinear PMF model) in the Multilinear Engine (ME-2, Paatero, 1999) to apportion the organic fraction of a Q-AMS dataset from Zurich during wintertime inversions, when no physically-meaningful components could be identified by the bilinear model alone. Three factors, representing

HOA, OOA-I, and wood burning aerosol, were identified, with OOA-I and wood-burning aerosol accounting for 55% and 38% of the mass, respectively. More advanced source apportionment methods based on Bayesian statistics are under development and have not been applied to aerosol MS data to our knowledge (Christensen et al., 2007).

5 Of the analysis techniques mentioned above, Positive Matrix Factorization (PMF) is the most widely used in the atmospheric research community (Lee et al., 1999; Ramadan et al., 2000; Kim et al., 2003; Xie et al., 1999; Larsen and Baker, 2003; Maykut et al., 2003) and its application to PM has been recently summarized in two separate reviews (Reff et al., 2007; Engel-Cox and Weber, 2007). PMF is a receptor-only, factorization model based on mass conservation which requires no a priori information about factor profiles or time trends. PMF has generally been applied to long-term, low-time-resolution datasets, though there has been a call for greater application of source apportionment techniques to air pollution events to facilitate understanding of specific sources for regulatory purposes (Engel-Cox and Weber, 2007). As shown schematically in Fig. 1, PMF is a bilinear unmixing model in which a dataset matrix is assumed to be comprised of the linear combination of factors with constant profiles that have varying contributions across the dataset. All of the values in the profiles and contributions are constrained to be positive. The model can have an arbitrary number of factors; the user must select the solution that “best” explains the data. This is often the most subjective and least quantitative step of PMF analysis and relies greatly on the judgment and skill of the modeler (Engel-Cox and Weber, 2007; Reff et al., 2007). In addition, mathematical deconvolution of a dataset often yields non-unique solutions, in which linear transformations (colloquially referred to as “rotations”) of the factors are possible while the positivity constraint is maintained. The necessity of choosing a number of factors and a particular rotation often complicates the interpretation of the solutions. As clearly articulated by P. Paatero (2008<sup>2</sup>, personal communication, 2007):

“It is unfortunate that introducing a priori information also introduces some subjective

<sup>2</sup>Paatero, P. and Hopke, P. K.: Rotational tools for factor analytic models implemented by using the multilinear engine, in preparation, 2008.

---

**Organic components  
from PMF of Q-AMS  
data**

I. M. Ulbrich et al.

---

Title Page

Abstract

Introduction

Conclusions

References

Tables

Figures

◀

▶

◀

▶

Back

Close

Full Screen / Esc

Printer-friendly Version

Interactive Discussion



tivity in the analysis [...] However, the tradeoff is often between a successful albeit subjectively aided analysis and an unsuccessful analysis. [...] subjective decisions must be fully and openly reported in publications. [...] Hiding the details of subjective decisions or even worse, pretending that no subjectivity is included in the analysis, should not be tolerated in scientific publications.”

Although the application of PMF analysis to data from the AMS and other aerosol mass spectrometers is relatively new, it is quickly becoming widespread. Thus, a detailed characterization of the capabilities and pitfalls of this type of analysis when applied to aerosol MS data is important. UMR AMS datasets are very large with typically several million datapoints ( $\sim 300$   $m/z$ 's per sample, with  $\sim 8000$  samples for a month-long campaign with 5 min averaging) and fragmentation of molecules during ionization gives each mass spectrum strongly interrelated data. AMS datasets differ in two fundamental ways from most atmospheric datasets to which PMF has been applied. The structure, internal correlation, and precision of AMS data are significantly different from datasets of multiple aerosol components (metals, organic and elemental carbon, ions, etc.) measured by different instruments typically used with PMF in previous studies. The error structure is also more coherent and self-consistent due to the use of data from a single instrument, rather than mixing data from different instruments for which the relative errors may be more difficult to quantify precisely, or that may drift differently, etc.

In this work, we apply PMF to data obtained with the quadrupole Aerosol Mass Spectrometer (Q-AMS) during the Pittsburgh Air Quality Study. Three factors, interpreted as HOA, aged regional OOA, and fresh, semivolatile OOA are reported for the Pittsburgh ambient dataset. The ambiguities associated with choosing the number of factors and their best rotations are reported. In addition, sensitivity analyses are performed with synthetic datasets constructed to retain the inherent structure of AMS data and errors. We explore methods that can inform the choice of the appropriate number of factors and rotation for AMS OA datasets, as well as investigate the retrievability of small or highly correlated factors.

## Organic components from PMF of Q-AMS data

I. M. Ulbrich et al.

Title Page

Abstract

Introduction

Conclusions

References

Tables

Figures

◀

▶

◀

▶

Back

Close

Full Screen / Esc

Printer-friendly Version

Interactive Discussion





## 2 Methods

### 2.1 Aerosol Mass Spectrometer (AMS)

The Q-AMS has been described in detail elsewhere (Jayne et al., 2000; Jimenez et al., 2003) and only a brief summary is given here. The AMS consists of three main parts: an inlet system which generates a particle beam, a particle sizing section, and a particle composition analysis section. The inlet focuses submicron particles into a narrow beam. A mechanical chopper allows all particles (“beam open”), no particles (“beam closed”), or a packet of particles (“beam chopped”) to pass to the particle sizing region. Particles impact on a flash vaporizer (600°C) at the rear of the sizing region under high vacuum ( $\sim 10^{-7}$  Torr). The vapors from non-refractory components are ionized by electron impact (70 eV) and the resultant positively charged ions are analyzed by the quadrupole mass spectrometer.

The Q-AMS can be operated in any of three modes: mass spectrum (MS), particle time-of-flight (PToF), or jump mass spectrum (JMS). In MS mode, the chopper alternates between the beam open and closed positions while the mass spectrometer scans across  $m/z$  1 to 300. Each e.g. five-minute average is the difference between the total open and closed signals and is the ensemble average mass spectrum of thousands of particles. In PToF mode, the beam is chopped and packets of one or a few particles enter the particle sizing region. Particles achieve size-dependent velocities at the exit of the lens which allows measurement of particle size distributions, but only at  $\sim 10$ – $15$  selected  $m/z$ 's. JMS mode is identical to MS mode except in that only  $\sim 10$   $m/z$ 's are monitored to maximize signal-to-noise ratio (SNR) (Crosier et al., 2007; Nemitz et al., 2008). We use the MS mode data for this study because it has high signal-to-noise and contains the full structure of the mass spectra and thus the most chemical information. Each sample is the linear combination of the spectra from all particles and species vaporized during the sample period. If JMS data is available, it may be used to replace the MS  $m/z$ 's as the JMS data has much better SNR (Crosier et al., 2007). Preliminary analyses show that PToF data contains significant information that can be exploited

## Organic components from PMF of Q-AMS data

I. M. Ulbrich et al.

Title Page

Abstract

Introduction

Conclusions

References

Tables

Figures

◀

▶

◀

▶

Back

Close

Full Screen / Esc

Printer-friendly Version

Interactive Discussion





by PMF-like methods (Nemitz et al., 2008), however this also introduces additional complexities and it is outside of the scope of this paper.

Newer versions of the AMS include the compact time-of-flight mass spectrometer (C-ToF-AMS, (Drewnick et al., 2005)) and the high-resolution ToF-AMS (HR-ToF-AMS, (DeCarlo et al., 2006)). These instruments operate in MS and PToF modes. Conceptually the MS mode from the C-ToF-AMS produces identical data to those from the Q-AMS, except with higher SNR, and thus the results from this paper should be applicable to PMF analyses of such data. The MS mode from the HR-ToF-AMS contains much additional chemical information such as time series of high resolution ions (e.g., both  $C_3H_7^+$  and  $C_2H_3O^+$  instead of total  $m/z$  43) that should facilitate the extraction of PMF components. The first application of PMF to HR-ToF-AMS MS-mode data will be presented in a separate publication (DeCarlo et al., 2008<sup>3</sup>).

The datasets used in this study are comprised of only the organic portion of the AMS mass spectrum measured by the Q-AMS, which is determined from the total mass spectrum by application of a “fragmentation table” (Allan et al., 2004) for removing ions from air and inorganic species. The atomic oxygen to carbon ratio (O/C) for UMR MS can be estimated from the percent of OA signal at  $m/z$  44 (predominately  $CO_2^+$ ) in the OA MS (Aiken et al., 2008). Percent  $m/z$  44 is reported here as an indication of the degree of oxygenation of representative spectra.

The time series of inorganic species (non-refractory ammonium, nitrate, sulfate, and chloride) are not included in the PMF analysis and are instead retained for a posteriori comparison with the time series of the factors and for use in their interpretation. It is also of interest to perform the PMF analysis on the total spectrum without removing inorganic species (but still removing the large air signals), however this is outside the scope of this paper.

<sup>3</sup>DeCarlo, P., Ulbrich, I. M., Aiken, A. C., et al.: Aircraft Based Source Apportionment of Organic Aerosol Measured During the MILAGRO Campaign, in preparation, 2008.

## Organic components from PMF of Q-AMS data

I. M. Ulbrich et al.

Title Page

Abstract

Introduction

Conclusions

References

Tables

Figures

◀

▶

◀

▶

Back

Close

Full Screen / Esc

Printer-friendly Version

Interactive Discussion



## 2.2 Factorization methods

### 2.2.1 Positive Matrix Factorization (PMF)

Positive Matrix Factorization (PMF) (Paatero and Tapper, 1994; Paatero, 1997) is a model for solving a receptor-only, bilinear unmixing model which assumes that a measured dataset conforms to a mass-balance of a number of constant source profiles (mass spectra for AMS data) contributing varying concentrations over the time of the dataset (time series), such that

$$\mathbf{X}_{ij} = \mathbf{G}_{ip}\mathbf{F}_{pj} + \mathbf{E}_{ij} \quad (1)$$

where  $i$  and  $j$  refer to row and column indices in the matrix, respectively,  $p$  is the number of factors in the solution, and  $\mathbf{X}$  is the  $m \times n$  matrix of measured data elements to be fit. In AMS data, the  $m$  rows of  $\mathbf{X}$  are ensemble average mass spectra (MS) of typically tens of thousands of particles measured over each averaging period (typically 5 min) and the  $n$  columns of  $\mathbf{X}$  are the time series (TS) of each  $m/z$  sampled.  $\mathbf{G}$  is an  $m \times p$  matrix whose columns are the factor TS,  $\mathbf{F}$  is a  $p \times n$  matrix whose rows are the factor profiles (MS), and  $\mathbf{E}$  is the  $m \times n$  matrix of residuals not fit by the model for each experimental data point ( $\mathbf{E} = \mathbf{X} - \mathbf{GF}$ ). A schematic representation of the factorization is shown in Fig. 1. The model requires no a priori information about the values of  $\mathbf{G}$  and  $\mathbf{F}$ . We normalize the rows in  $\mathbf{F}$  (MS) to sum to 1, giving units of mass concentration ( $\mu\text{g}/\text{m}^3$ ) to the columns of  $\mathbf{G}$  (TS). The values of  $\mathbf{G}$  and  $\mathbf{F}$  are iteratively fit to the data using a least-squares algorithm, minimizing a quality of fit parameter  $Q$ , defined as

$$Q = \sum_{i=1}^m \sum_{j=1}^n (\mathbf{E}_{ij} / \sigma_{ij})^2 \quad (2)$$

where  $\sigma$  is the  $m \times n$  matrix of estimated errors (standard deviations) of the points in the data matrix,  $\mathbf{X}$ . This scaling makes optimal use of the information content of the data by weighing variables by their degree of measurement certainty (Paatero and Tapper,

## Organic components from PMF of Q-AMS data

I. M. Ulbrich et al.

Title Page

Abstract

Introduction

Conclusions

References

Tables

Figures

◀

▶

◀

▶

Back

Close

Full Screen / Esc

Printer-friendly Version

Interactive Discussion



1994). Additionally, the values in **G** and **F** are constrained to be positive, reflecting positive contributions of each factor to the measured mass and positive signal in each  $m/z$ , respectively.

The bilinear model can be solved by the PMF2 (Paatero, 2000) and multilinear engine (ME) (Paatero, 1999) algorithms developed by P. Paatero, or by custom algorithms developed by others (Lu and Wu, 2004; Lee and Seung, 1999; Hoyer, 2004). Here we use PMF2 because of its robustness and wide use in the research community. Future work will explore more complex models using the ME program. All analyses in this study were done with PMF2 version 4.2 in the robust mode, unless otherwise noted. The default convergence criteria were not modified. Since the output of PMF is very large and evaluating it is very complex, we developed a custom software tool (PMF Evaluation Panel, PMF-EP, Fig. 2) in Igor Pro (WaveMetrics, Inc., Portland, Oregon). The PMF-EP calls the PMF2 algorithm to solve a given problem for a list of values of  $\rho$  and FPEAK, stores the results for all of these combinations, and allows the user to rapidly display and compare many aspects of the solution matrix and residuals and to systematically evaluate the similarities and differences of the output spectra and time series with known source/component spectra and tracer time series.

### *Choosing the number of factors*

In the bilinear model, the number of factors,  $p$ , in the real dataset, is generally unknown. Choosing the best modeled number of factors for a dataset is the most critical decision to the interpretation of the PMF results. Several mathematical metrics have been used to aid determination of this value. A first criterion is the total scaled residual,  $Q$ . If all points in the matrix are fit to within their expected error, then  $\text{abs}(e_{ij})/\sigma_{ij}$  is  $\sim 1$  and the expected  $Q$  ( $Q_{\text{exp}}$ ) equals the degrees of freedom of the fitted data  $=mn - p(m+n)$  (Paatero et al., 2002). For AMS datasets,  $mn \gg p(m+n)$ , so  $Q_{\text{exp}} \approx mn$ , the number of points in the data matrix. If the assumptions of the bilinear model are appropriate for the problem (data is the sum of variable amounts of components with constant mass spectra, with normally-distributed error) and the estimation of the errors in the input

## Organic components from PMF of Q-AMS data

I. M. Ulbrich et al.

Title Page

Abstract

Introduction

Conclusions

References

Tables

Figures

◀

▶

◀

▶

Back

Close

Full Screen / Esc

Printer-friendly Version

Interactive Discussion



---

**Organic components  
from PMF of Q-AMS  
data**

---

I. M. Ulbrich et al.

---

[Title Page](#)[Abstract](#)[Introduction](#)[Conclusions](#)[References](#)[Tables](#)[Figures](#)[⏪](#)[⏩](#)[◀](#)[▶](#)[Back](#)[Close](#)[Full Screen / Esc](#)[Printer-friendly Version](#)[Interactive Discussion](#)

data is accurate, solutions with numbers of factors that give  $Q/Q_{\text{exp}}$  near 1 should be obtained. Values of  $Q/Q_{\text{exp}} \gg 1$  indicate underestimation of the errors or variability in the factor profiles that cannot be simply modeled as the sum of the given number of components. If  $Q/Q_{\text{exp}} \ll 1$ , the errors of the input data have been overestimated. As additional factors are considered,  $Q$  is expected to decrease, as each additional factor introduces more degrees of freedom that should allow more of the data to be fit. A large decrease in  $Q$  with the addition of another factor implies that the additional factor has explained significantly more of the variation in the data and has also been used as a metric for choosing a solution (Paatero and Tapper, 1993). A second metric for choosing a best solution is based on the values of the rotational matrix (RotMat, output by PMF and explained below). Some have argued that a solution with the least rotation may be best and have used the maximum value of Rotmat as a metric for making the determination of the number of factors (Lee et al., 1999; Lanz et al., 2006), while others argue that it is best to use this output only as a qualitative metric (Paatero, 2000). Many studies have concluded that source apportionment models must be combined with supplementary evidence to choose and identify factors (Engel-Cox and Weber, 2007).

### *Rotational ambiguity of solutions*

Despite the constraint of non-negativity, PMF solutions may not be unique, i.e., there may be linear transformations (“rotations”) of the factor time series and mass spectra that result in an identical fit to the data, such that:

$$\mathbf{GF} = \mathbf{GTT}^{-1}\mathbf{F} \quad (3)$$

where  $\mathbf{T}$  is a transformation matrix and  $\mathbf{T}^{-1}$  is its inverse. A given  $T_{ij} > 0$  would create a rotation by adding the mass spectra and subtracting the time series of factors  $i$  and  $j$ , while  $T_{ji}$  would do the opposite. An infinite number of “rotations” may exist and still meet the non-negativity constraint. Note that “solid body” geometric rotations of the factors are only a subset of the possible linear transformations.

---

**Organic components  
from PMF of Q-AMS  
data**I. M. Ulbrich et al.

---

[Title Page](#)[Abstract](#)[Introduction](#)[Conclusions](#)[References](#)[Tables](#)[Figures](#)[⏪](#)[⏩](#)[◀](#)[▶](#)[Back](#)[Close](#)[Full Screen / Esc](#)[Printer-friendly Version](#)[Interactive Discussion](#)

PMF2 does not report the possible values of  $\mathbf{T}$ , but does report the standard deviation of possible values of  $\mathbf{T}$  as the “RotMat” matrix. Larger values in  $\mathbf{T}$  imply greater rotational freedom of a solution. Specifically, a larger value of  $T_{ij}$  suggests that the  $i$  and  $j$  factors can be mixed while still satisfying the non-negativity constraint. Diagonal elements of  $\mathbf{T}$  are always 1, and their standard deviations are therefore 0. RotMat for a one-factor solution is always 0. The value of RotMat as a diagnostic has been debated in the literature (Paatero, 2000, 2007a; Lee et al., 1999; Lanz et al., 2007), and we explore its use as a qualitative indicator of rotational freedom of a given solution (Sects. 3.1.2, 3.2.2).

With PMF2, once the approximate best number of factors has been determined, a subset of the rotational freedom of the solution may be explored through use of the FPEAK parameter. FPEAK allows for examining approximate or “distorted” rotations that do not strictly follow Eq. (4) and thus produce a higher value of  $Q$ . Of greatest interest are FPEAK values for which  $Q$  does not increase significantly over  $Q_{\text{FPEAK}=0}$ , since the PMF model (Eq. 1) is still satisfied with little additional error. Some researchers recommend exploring a range of FPEAKs such that  $Q/Q_{\text{exp}}$  increases from its minimum by e.g. 10% (P. K. Hopke, personal communication, 2007). Solutions reported in the literature generally have an FPEAK value between  $-1$  and  $+1$  (Reff et al., 2007). Not all possible rotations can be explored by varying FPEAK, and the characterization of rotations outside of that realm is a topic of current research (Paatero and Hopke, 2008<sup>2</sup>; Paatero et al., 2002). As stated above, none of these metrics or criteria can unequivocally pinpoint the “best” or “true” solution, but a chosen PMF solution can be justified through comparison of factor profiles with known profiles and comparison of factor time series with the time series of tracer species. If several plausible solutions are found, e.g. with different FPEAKs, the differences in the solutions are a good indication of the uncertainty of the PMF solution (P. Paatero, personal communication, 2007; Nemitz et al., 2008).

## 2.2.2 Singular value decomposition

In contrast to PMF, the singular value decomposition (SVD) of a matrix produces only one factorization (as in Eq. 1) with orthogonal factors. Starting with the factor that explains the most variance of the original matrix, factors are retained in order of decreasing variance of the matrix to explain enough (usually 99%) of the variance of the original matrix. These orthogonal factors usually contain negative values. The relationship between SVD and PMF is described by Paatero and Tapper (1993).

## 2.3 Data sets

### 2.3.1 Real Pittsburgh dataset

The real Pittsburgh dataset investigated here is the same as that analyzed by Zhang et al. (2005a) with the CPCA method. Versions without pretreatments and with pretreatments applied (filtering for high-noise spikes and 3-point smoothing of  $m/z$  time series, described in Zhang et al. (2005a)) were analyzed with PMF2. Additional information on the Pittsburgh study can be found in previous publications (Zhang et al., 2004, 2005a, b, c, 2007b). The study took place 7–22 September 2002 in Pittsburgh, Pennsylvania as part of the Pittsburgh Air Quality Study (PAQS) at the EPA Supersite. 3199 time-averaged mass spectra (5–10 min averaging) were collected for  $m/z$  1 to 300. Fragments with plausible organic fragments were retained, leaving 270  $m/z$  fragments. Thirty fragments were removed because they couldn't have plausible organic fragments, have overwhelming contribution from inorganic or gaseous species, or high instrument background (Zhang et al., 2005a). The remaining matrix had 270 columns ( $m/z$ ) and 3199 rows (time-averaged mass spectra) with 863 730 data points. The error values were calculated by the method of Allan et al. (2003) by the standard Q-AMS data analysis software (v1.36). We recommend that for Q-AMS data, version 1.36 or later of the standard data analysis software is used for estimation the errors for use with PMF, as corrections to the error calculation algorithms have been made from pre-

Title Page

Abstract

Introduction

Conclusions

References

Tables

Figures

◀

▶

◀

▶

Back

Close

Full Screen / Esc

Printer-friendly Version

Interactive Discussion



---

**Organic components  
from PMF of Q-AMS  
data**I. M. Ulbrich et al.

---

[Title Page](#)[Abstract](#)[Introduction](#)[Conclusions](#)[References](#)[Tables](#)[Figures](#)[◀](#)[▶](#)[◀](#)[▶](#)[Back](#)[Close](#)[Full Screen / Esc](#)[Printer-friendly Version](#)[Interactive Discussion](#)

vious versions and error matrices calculated from earlier versions may give different factors because of different weighting. Nonsensical behavior of the factors (MS with one dominant fragment, as reported by Lanz et al. (2007) or TS that oscillate between zero several  $\mu\text{g}/\text{m}^3$  over 5-min periods) were not observed when the error estimates from v1.36 were used. Small negative values that are the result of differences (caused by noise) between the beam open and beam closed measurements in the instrument are not changed, nor are their corresponding error values altered.

We explored the effect of treating variables with low SNR (Paatero and Hopke, 2003). Paatero and Hopke recommend the removal of variables (TS of  $m/z$  in our case) with SNR less than 0.2 (“bad” variables) and the downweighting of variables with SNR between 0.2 and 2 (“weak” variables) by increasing their estimated error values. For this dataset, no columns are “bad” by this definition and approximately 60 of the higher mass fragments ( $m/z$  150, 167, 168, 207, 210, 212, 220, 232–236, 238, 240, 243–249, 253–300) are “weak”.

### 2.3.2 Synthetic datasets

Each synthetic dataset was created by combining selected MS and TS into  $\mathbf{F}_{\text{input}}$  and  $\mathbf{G}_{\text{input}}$  matrices, respectively, which were then multiplied to form an  $\mathbf{X}_{\text{input}}$  matrix ( $\mathbf{X}_{\text{input}} = \mathbf{G}_{\text{input}} \times \mathbf{F}_{\text{input}}$ , the inverse of Eq. (1), with  $E_{ij} = 0$ ).

The synthetic Poisson-distributed error values for these datasets were approximated by a method parallel to the estimation of errors for real data (see description in Appendix A). The real and synthetic errors are always very similar, and thus the synthetic datasets retain the error structure of the real data.

Synthetic Gaussian noise was added to the difference spectrum synthetic data, such that the noisy synthetic data matrix,  $\mathbf{X}'$  was calculated by

$$\mathbf{X}'_{i,j} = \mathbf{X}_{i,j} + \text{Gauss}(0, \sigma_{i,j}) + 0.001 \quad (4)$$

where  $\mathbf{X}_{i,j}$  is the synthetic data, random noise is from a Gaussian random number generator with a mean of zero and a standard deviation of the error estimate of that



point, and 0.001 represents electronic noise in the instrument. Gaussian noise is added instead of Poisson noise because the Poisson distribution quickly converges to the Gaussian distribution, and any ions of importance have enough counts to reach a Gaussian distribution to good approximation. The sum of ion counting and electronic noises represents most of the noise in a Q-AMS dataset, but does not reflect “particle-counting statistics noise” from events when a large particle is vaporized and “extra” (much greater than average) signal is detected at only one  $m/z$  during the scanning of the quadrupole across the  $m/z$  range (Zhang et al., 2005a).

### *Two-factor synthetic datasets*

A two-factor synthetic base case was created using the HOA and OOA MS and TS as determined by Zhang et al. (2005a, c) for the Pittsburgh dataset. Difference spectra may contain negative values for very small signals, akin to below-detection limit values in other datasets. Zhang et al. (2005a) allowed their method to fit these small negative values and the resulting factors include small negative numbers. Negative values in the Zhang solution were converted to their absolute value before creating the  $\mathbf{F}_{\text{input}}$  and  $\mathbf{G}_{\text{input}}$  matrices, so that the input has only positive numbers.

Variations on the two-factor base case were made to explore the ability of PMF to retrieve factors with varying degrees of correlation. The Zhang Pittsburgh factors have correlations (Pearson  $R$ ) in MS ( $R_{\text{MS}}$ ) of 0.35 and in TS ( $R_{\text{TS}}$ ) of 0.36. New cases were constructed by changing only the time series (new  $R_{\text{TS}}=0, 0.2, 0.6, 0.8, \text{ and } 0.95$ ) and keeping the original mass spectra, by changing the mass spectra (new  $R_{\text{MS}}=0.02, 0.2, 0.6, 0.8, \text{ and } 0.95$ ) while keeping the original TS, and changing both the time series and mass spectra (creating cases where  $R_{\text{MS}}=R_{\text{TS}}=0, 0.2, 0.6, 0.8, \text{ and } 0.95$ ). Most new cases were created by mixing the mass spectra or time series by  $\mathbf{F}'=\mathbf{F}\mathbf{S}$  or  $\mathbf{G}'=\mathbf{G}\mathbf{S}$ , where  $\mathbf{S}$  is a  $2\times 2$  matrix with diagonal elements=1 and off-diagonal elements chosen to give the required correlation between factors. This is, in essence, a “rotation” of only the mass spectra or the time series matrix (not to be confused with a proper rotation of a solution in which both MS and TS have to change simultaneously). Mak-

## Organic components from PMF of Q-AMS data

I. M. Ulbrich et al.

Title Page

Abstract

Introduction

Conclusions

References

Tables

Figures

◀

▶

◀

▶

Back

Close

Full Screen / Esc

Printer-friendly Version

Interactive Discussion



ing less correlated mass spectra ( $R_{MS}=0, 0.2$ ) by this method created large negative values; in order to maintain positivity of the input, elements in the spectra were scaled manually to achieve the desired correlation between spectra. Multiplicative factors and  $S$  matrices used to create new data cases are provided in Table S1 at <http://www.atmos-chem-phys-discuss.net/8/6729/2008/acpd-8-6729-2008-supplement.pdf>. New TS were constructed with the original HOA TS and a modified OOA TS, and new MS were constructed with the original OOA MS and a modified HOA MS. The input MS are always normalized to sum to 1 and the modified HOA and OOA TS always have the same average mass fractions as in the base case.

### 10 *Three-factor synthetic datasets*

A three-factor synthetic base case was created from the three-factor PMF solution with FPEAK=0 of the real Pittsburgh dataset (described below). All factor elements were positive for this solution, so no treatment of negative values was necessary.

Variations on the three-factor base case were made to explore the ability of PMF to retrieve factors which have a small fraction of the total mass. Three-factor synthetic cases were created by replacing the mass spectrum of the smallest factor in the previous three-factor synthetic case with reference mass spectra (see Sect. 2.4.1) of fulvic acid (FA) (Alfarra, 2004), biomass burning organic aerosol (BBOA, Palmetto leaf smoke from the Fire Lab at Montana Experiment (FLAME-1) in June 2006), or fresh chamber SOA (methylene cyclohexane +O<sub>3</sub> (Bahreini et al., 2005)), each of which has a different correlation to the other MS in the input. Variations on this case were made in which the average mass of this factor was decreased (cases with 9.6%, 5.1%, 2.6%, 1.3%, and 0.7% average mass fraction) and used in a new  $\mathbf{G}_{input}$  to create a new  $\mathbf{X}_{input}$ .

---

## Organic components from PMF of Q-AMS data

I. M. Ulbrich et al.

---

[Title Page](#)[Abstract](#)[Introduction](#)[Conclusions](#)[References](#)[Tables](#)[Figures](#)[⏪](#)[⏩](#)[◀](#)[▶](#)[Back](#)[Close](#)[Full Screen / Esc](#)[Printer-friendly Version](#)[Interactive Discussion](#)

## 2.4 Statistical comparisons of mass spectra

### 2.4.1 Reference spectra

An AMS Spectral Database (Ulbrich and Jimenez, 2007) has been created to collect published AMS spectra for public use. AMS spectra are similar, but not identical to, spectra from standard electron-impact databases such as the NIST Chemistry WebBook (<http://webbook.nist.gov/chemistry/> (Stein et al., 2001)), primarily because of thermal decomposition of molecules during vaporization in the AMS and additional thermal energy of the ions leading to increased fragmentation (Alfarra, 2004; Dzepina et al., 2007). AMS instruments at the same vaporizer temperature produce similar spectra (Alfarra, 2004; Dzepina et al., 2007). These reference spectra are used to aid the identification of spectra in PMF factors. The database contains spectra for several categories of aerosol, including ambient aerosol, direct measurements from sources (e.g., vehicles, biomass burning), laboratory-generated aerosol of chemical standards, laboratory SOA, laboratory heterogeneously oxidized particles, other laboratory-generated aerosol, and spectra derived from mathematical deconvolutions of ambient OA. Organic aerosol spectra in the database span a range of representative hydrocarbon-like (e.g., diesel bus exhaust, fuel, and lubricating oil) and oxygenated (e.g., various chamber SOA, oxalic acid, and fulvic acid) OA.

### 2.4.2 Statistics of correlation

Throughout this work we report correlations between MS and TS. Pearson  $R$  is always used for TS correlations. Correlations between MS are complicated because the signal values span several orders of magnitude and a few high intensity masses (generally all at  $m/z \leq 44$ ) can dominate the correlation (Hemann et al., 2008). For correlations between factor and reference MS, we also report Pearson  $R$  for  $m/z > 44$  ( $R_{m/z > 44}$ ) to remove this bias (Alfarra et al., 2007; Lanz et al., 2007). These two statistics represent one way to numerically match factor profiles to reference profiles for AMS datasets

## Organic components from PMF of Q-AMS data

I. M. Ulbrich et al.

Title Page

Abstract

Introduction

Conclusions

References

Tables

Figures

◀

▶

◀

▶

Back

Close

Full Screen / Esc

Printer-friendly Version

Interactive Discussion



and improve the source identification process (Reff et al., 2007). A rank-correlation method, Spearman  $R$ , in which correlations are made using the rank order of values (highest= $n$ , lowest=1) instead of the actual data values (Press et al., 2007), was also considered as well as several variations on it (e.g., removing ions with low signal in both spectra before calculation), but this often gave too much weight to small signals and otherwise did not aid interpretation beyond that provided by  $R_{m/z>44}$ .  $R$  is always used instead of  $R^2$  in order to observe negative correlations.

### 3 Results

#### 3.1 Real Pittsburgh data

We explored the effect of data pretreatment (Zhang et al., 2005a), downweighting of “weak” variables by a factor of 2 (Paatero and Hopke, 2003), and use of the robust mode in PMF (in which outliers in the iterative fit ( $|E_{ij}/\sigma_{ij}|>4$ ) are not allowed to pull the fit with weight  $>4$ ). Differences in the factor MS and TS were minor in all cases. We note, however, that this dataset has good SNR, that pretreatment aids the analysis by removing spikes whose cause is understood (poor sampling statistics of high-mass, low-number particles mainly in HOA  $m/z$ 's (Zhang et al., 2005a)), and that these techniques can make a bigger difference for a dataset with much lower signal-to-noise (Canagaratna et al., 2006). We report results for the case with pretreatment, without downweighting, in the robust mode in order to capture the broad characteristics of the dataset. Throughout this section, a “case” refers to an input dataset and a “solution” refers to PMF2 results.

##### 3.1.1 Solutions as a function of number of factors

Q-values and maximum value of RotMat for the real Pittsburgh dataset for solutions up to 7 factors are shown in Fig. 3a and mass fractions of these solutions are shown in

## Organic components from PMF of Q-AMS data

I. M. Ulbrich et al.

Title Page

Abstract

Introduction

Conclusions

References

Tables

Figures

◀

▶

◀

▶

Back

Close

Full Screen / Esc

Printer-friendly Version

Interactive Discussion



**Organic components  
from PMF of Q-AMS  
data**

I. M. Ulbrich et al.

Title Page

Abstract

Introduction

Conclusions

References

Tables

Figures

◀

▶

◀

▶

Back

Close

Full Screen / Esc

Printer-friendly Version

Interactive Discussion



Fig. 4a, all for FPEAK=0. There is a large drop in the  $Q/Q_{\text{exp}}$  value from one to two factors, and  $Q/Q_{\text{exp}}$  is  $\sim 1$  at 2 factors. Additional factors continue to reduce  $Q/Q_{\text{exp}}$  below 1, but no strong change in slope is observed (largest steps are 12% from 2–3 factors and 3–4 factors). With seven factors,  $Q/Q_{\text{exp}}$  is 0.68. The  $Q$  criterion clearly implies that at least two factors are necessary to explain the data, but there is no strong indication for choosing another solution. Max(RotMat) has a distinct maximum at 2 factors and much smaller values for larger numbers of factors. There is a local minimum at 4 factors another at 6 factors. Based on the trends of  $Q/Q_{\text{exp}}$  and the max(RotMat) from Lee et al. (1999), solutions with 2 or more factors would be suitable. SVD analysis of the data matrix shows that 3 factors are required to explain at least 99% of the variance (Fig. 3d). We proceed to analyze each solution stepwise and attempt to interpret them based on correlations with reference MS and tracer TS and use this interpretability as a guide for choosing the number of factors.

*2-factor solution*

The MS and TS of the two-factor solution are shown in Fig. S1a. These two factors reproduce the MS and TS found by Zhang et al. (2005a) for this dataset using their original 2-component CPCA method with  $R_{\text{HOA}}=0.96$  and  $R_{\text{OOA}}>0.99$  for mass spectra and  $R_{\text{HOA}}=0.98$  and  $R_{\text{OOA}}=0.96$  for time series all at FPEAK=0. The OOA factor has 12%  $m/z$  44 and the HOA factor has 3%  $m/z$  44 at FPEAK=0. All interpretations of the factors made by Zhang et al. (2005a, c) hold for these factors.

*3-factor solution*

The MS and TS of the three factor solution at FPEAK=0 are shown in Fig. 5. The three-factor solution has HOA and OOA factors very similar to the Zhang et al. HOA and OOA ( $R_{\text{HOA MS}}=0.97$ ,  $R_{\text{OOA MS}}>0.99$ ;  $R_{\text{HOA TS}}=0.98$ ,  $R_{\text{OOA TS}}=0.94$ ) that correlate well with primary combustion tracers ( $R_{\text{CO}}=0.86$ ,  $R_{\text{NOx}}=0.90$ ) and AMS sulfate ( $R=0.86$ ), respectively. Note that HOA likely encompasses both gasoline and diesel engine

**Organic components  
from PMF of Q-AMS  
data**

I. M. Ulbrich et al.

Title Page

Abstract

Introduction

Conclusions

References

Tables

Figures

◀

▶

◀

▶

Back

Close

Full Screen / Esc

Printer-friendly Version

Interactive Discussion

emissions, plus other sources of reduced aerosols such as meat cooking (Mohr et al., 2008<sup>4</sup>). PMF analysis of molecular markers results in a similar phenomenon in which the composition of gasoline and diesel emissions are too similar and a factor representing the sum is often retrieved (Brinkman et al., 2006). The third factor represents 10% of the OA mass and has a MS with strong correlation with several primary, secondary, and biomass burning OA spectra from the AMS Spectral Database (Fig. 6a, Table S1 at <http://www.atmos-chem-phys-discuss.net/8/6729/2008/acpd-8-6729-2008-supplement.pdf>). We identify this spectrum as a second type of OOA, OOA-II, because of the strong presence of  $m/z$  44 (high resolution aerosol mass spectrometer data of oxygenated compounds confirm that this is most likely  $\text{CO}_2^+$  (DeCarlo et al., 2006)), and the correlation with OOA/SOA spectra and tracer time series (see below). The OOA that accounts for most of the mass is very similar to that identified by Zhang et al. (2005a) and is now termed OOA-I, following the nomenclature of Lanz et al. (2007). The OOA-II spectrum lies 28 degrees out of the HOA/OOA-I plane, is clearly not a linear combination of the HOA and OOA-I spectra, and is unlikely to arise due to noise. The lack of significant  $m/z$  60 and 73 strongly suggests that this OOA-II does not arise from a biomass burning source (Alfarra et al., 2007; Schneider et al., 2006). The OOA-II time series correlates well with ammonium nitrate and ammonium chloride from the AMS, two secondary inorganic species which were not included in the PMF analysis ( $R_{\text{TS}}=0.63$ ,  $R_{\text{TS}}=0.81$ , respectively). Note that we can confirm that nitrate and chloride signals from the AMS are indeed dominated by the inorganic ammonium salts, not fragments of organic species, based on the ammonium balance (Zhang et al., 2005b, 2007b). The OOA-II factor is less-oxygenated than OOA-I and more oxygenated than HOA ( $m/z$  44 of OOA-I is 12.5%, of OOA-II is 7%, and of HOA is 2.5%). Since both nitrate and chloride show a semivolatile behavior in Pittsburgh (Zhang et al., 2005b), these correlations imply that OOA-II is also semivolatile. Most

<sup>4</sup>Mohr, C., Huffman, J. A., Cubison, M., et al.: Characterization of Primary Organic Emissions from Meat Cooking, Trash Burning, and Mobile Sources with High-Resolution Aerosol Mass Spectrometry, Environ. Sci. Technol., in preparation, 2008.



likely OOA-II corresponds to fresher, semivolatile SOA, while OOA-I likely represents a more aged SOA that is much less volatile. Direct volatility measurements with a thermal-denuder AMS combination indeed show that the less oxygenated OOA-II is more volatile than OOA-I in Mexico City and Riverside, CA (Huffmann et al., 2008<sup>1</sup>). A similar OOA-II factor with a less oxidized spectrum and a high correlation with nitrate was reported by Lanz et al. (2007) for their dataset in Zurich in summer of 2005. These authors also interpreted OOA-II as fresh SOA.

#### 4-factor solution

The TS and MS for the 4-factor solution are shown in Fig. S1b (<http://www.atmos-chem-phys-discuss.net/8/6729/2008/acpd-8-6729-2008-supplement.pdf>). The four-factor solution has clear HOA, OOA-I, and OOA-II factors with high similarity to those in the 3-factor case ( $R_{\text{OOA-I}}=0.92$  for TS and MS,  $R_{\text{OOA-II}}>0.99$  for TS and  $=0.97$  for MS,  $R_{\text{HOA}}>0.99$  for TS and MS) which are interpreted as in the 3-factor case. The fourth factor correlates well with sulfate ( $R_{\text{TS}}=0.78$ ) and OOA-I ( $R_{\text{TS}}=0.92$  and distinctive visual structure) and has approximately the same fraction of the mass as OOA-I (32.5% and 30.5%, respectively). The MS of the fourth factor has  $R>0.9$  with database mass spectra of the Zhang Pittsburgh OOA, seven types of SOA, and six types of biomass burning (Fig. 6b, Table S2). However, strong independent evidence (such as a strong tracer correlation) for a distinctive, separate component is not present. This additional component shows many (but not all) of the signs of the “component splitting” of the solutions of the synthetic data cases discussed below (Sect. 3.2.1). In addition, the analysis of the residuals (below) does not suggest that adding components after the first 3 fits more of the data. Thus in the absence of any supporting evidence, we concluded that this component represents an artificial “splitting” of the solution and that keeping this component would be an overinterpretation of the PMF results. In particular we warn about trying to interpret e.g. one of the OOA-I s as “biogenic” and the other as “anthropogenic” or similar splits, in the absence of strong evidence to support these assignments.

## Organic components from PMF of Q-AMS data

I. M. Ulbrich et al.

Title Page

Abstract

Introduction

Conclusions

References

Tables

Figures

◀

▶

◀

▶

Back

Close

Full Screen / Esc

Printer-friendly Version

Interactive Discussion





## Five and more factor solutions

The five-factor solution (Fig. S1c) has four factors that are similar ( $R_{MS}$  and  $R_{TS}>0.97$ ) to the factors in the 4-factor solution. The fifth factor (HOA\_a) is similar to the HOA factor ( $R_{MS}=0.91$ ,  $R_{TS}=0.60$ ) in this solution and has  $R_{MS}>0.9$  with one type of meat cooking OA and two types of SOA, but there is no strong correlation with any available tracer. The HOA and HOA\_a factors have 21% and 15% of the mass, respectively. As before, we conclude that this “splitting” of the HOA is most likely a mathematical artifact and not a real component.

Interpretation of factors in the six- and seven-factor solutions becomes more complex and no independent information from tracer correlations exists to substantiate the interpretation of these factors. These factors likely arise due to splitting of the real factors, likely triggered by variations in the spectra of the real components (discussed below). No unrealistic factors that consist of a single  $m/z$  were observed in solutions up to 20 factors. Such factors have been reported in ambient solutions (Lanz et al., 2007), especially when the noise of a given  $m/z$  has been underestimated.

## Residuals of the PMF solutions

Figure 7 shows the  $Q/Q_{exp}$  values for each point in time and Fig. S2 shows the total residuals ( $\Sigma$  residual), total absolute residuals ( $\Sigma|\text{residual}|$ ), and normalized absolute residuals ( $\Sigma|\text{residual}|/\Sigma$  signal) for the 3- through 5-factor solutions for FPEAK=0. Note that  $Q_{exp}$  for a time sample equals the number of points in the sample (270). Figure S3 at <http://www.atmos-chem-phys-discuss.net/8/6729/2008/acpd-8-6729-2008-supplement.pdf> shows the distribution of the  $Q/Q_{exp}$  values for representative  $m/z$  from the real Pittsburgh data; minimization of total  $Q$  (while meeting non-negativity constraints) drives the fit in the PMF algorithm. The contributions to both  $Q/Q_{exp}$  and absolute residual, even after fitting 3 to 5 factors, have considerable structure (above a background level) that is very similar to the OOA-II time series from the three-factor solution ( $R=0.52$ ,  $R=0.55$ , and  $R=0.59$ , for the 3-, 4- and 5-factor so-

## Organic components from PMF of Q-AMS data

I. M. Ulbrich et al.

Title Page

Abstract

Introduction

Conclusions

References

Tables

Figures

◀

▶

◀

▶

Back

Close

Full Screen / Esc

Printer-friendly Version

Interactive Discussion



---

**Organic components  
from PMF of Q-AMS  
data**I. M. Ulbrich et al.

---

[Title Page](#)[Abstract](#)[Introduction](#)[Conclusions](#)[References](#)[Tables](#)[Figures](#)[⏪](#)[⏩](#)[◀](#)[▶](#)[Back](#)[Close](#)[Full Screen / Esc](#)[Printer-friendly Version](#)[Interactive Discussion](#)

lutions, respectively). Adding more factors results in only minor changes in the TS of  $Q/Q_{\text{exp}}$  contributions and residual, implying that the same data variation fit by the lower order solution is being refit with more factors. In fact, the decrease in the TS of  $Q/Q_{\text{exp}}$  (improvements in the fit) in solutions with 3 to 6 factors, do not occur during high periods of HOA, or OOA-II and only occasionally during periods of high OOA-I (Fig. S4). SVD of the residual matrix after fitting 3 factors (Fig. 3d) shows that with even 15 more factors, less than 95% of the remaining variance can be explained. The residual at specific  $m/z$ 's during periods of high OOA-II and high  $Q/Q_{\text{exp}}$  changes for many significant OOA-II  $m/z$ 's in modest amounts, fairly continuously, over periods of 10–20 min. This is likely caused by variations in the true OOA-II spectrum (which could occur, e.g., during condensation or evaporation of SVOCs) that cannot be represented by the constant-MS factor, nor are constant enough to become their own factor. These behaviors imply that three factors have explained as much of the data as is possible with a bilinear model with constant spectra.

### 3.1.2 Rotations

The three factor solution, which is the most interpretable as discussed above, is tested for its rotational ambiguity. The FPEAK range required for the  $Q/Q_{\text{exp}}=10\%$  criterion in the real data is  $-2.2$  to  $+2.0$  (Fig. 8). Solutions with FPEAKs between  $-1.0$  and  $+1.2$  give an increase of 1% over  $Q/Q_{\text{exp}}$  at FPEAK=0. MS and TS spanning this range of solutions are shown in Fig. 9. Note that changing FPEAK changes both the MS and TS simultaneously. Changes in TS occur more in some periods than others. Mass concentrations of all factors remain fairly constant at all FPEAKS during periods in which at least one factor has a mass concentration near zero, but periods in which all factors have non-zero mass concentration show more variation as FPEAK is changed. This is most dramatic for the OOA-II events on 13 September 2002 and 14 September 2002, in which negative FPEAKs give more mass to the OOA-II factor and less mass to the OOA-I factor compared to solutions with FPEAK $\geq 0$ . These differences should be viewed as one way to characterize the uncertainty of the PMF solutions, since the

$Q/Q_{\text{exp}}$  values change little between them and all the TS and MS appear physically plausible.

The MS change with FPEAK is most dramatic in the OOA-II MS, while the HOA and OOA-I MS change very little with FPEAK. This is not surprising since OOA-II accounts for a low fraction of the total signal and thus its spectrum can change more without causing large increases in the residuals. At large negative values of FPEAK, the OOA-II factor strongly resembles the HOA factor ( $R_{\text{MS}}=0.97$  at FPEAK  $-0.8$ ,  $R_{\text{MS}}=0.88$  at FPEAK  $=-0.4$ ). The ratio of  $m/z$  43 to  $m/z$  44 in OOA-II decreases from 1.9 to 0.9 and 0.22 as FPEAK increase from  $-0.8$  to 0 and  $+1.2$ , respectively. A sharp decrease in the fraction of signal attributed to  $m/z$  55 relative to a small decrease in  $m/z$  57 (ratios of 0.88, 0.43, and 0 at FPEAKs  $-0.8$ , 0, and  $+1.2$ , respectively) gives  $m/z$  57 an unusually high fraction of the signal in OOA-II at large positive FPEAKs. Positive FPEAK values also reduce the fraction of  $m/z$  44 (mainly  $\text{CO}_2^+$ ) attributed to the HOA MS, changing its fraction of  $m/z$  44 from 4% at FPEAK 0 to  $\ll 0.001\%$  (effectively 0, though PMF cannot return values of 0) at FPEAK 1.2.

Diagnostic graphs of the correlations between each of the three factors from the real case, and how these correlations change with FPEAK, are shown in Fig. 10a. The OOA-II factor is highly correlated in MS with both the HOA and OOA-I factors at FPEAK=0 ( $R_{\text{MS}}=0.73$  and  $0.82$ , respectively), but has a more correlated time series with HOA than with OOA-I ( $R_{\text{TS}}=0.76$  and  $0.05$ , respectively). As expected, the behavior of positive values of FPEAK is to mix the time series, making them more correlated and the mass spectra less correlated, moving these solutions toward the upper left of the graph. Negative values of FPEAK do the opposite. Note that this type of graph is very sensitive to small visual changes in the solution TS and MS. We find no evidence that solutions with FPEAKs away from zero are preferable.

### 3.2 Synthetic AMS data

It is clear from the analysis of this ambient dataset that there is significant ambiguity in the “correct” choice of the number of factors and rotations of the solutions. In this

## Organic components from PMF of Q-AMS data

I. M. Ulbrich et al.

Title Page

Abstract

Introduction

Conclusions

References

Tables

Figures

◀

▶

◀

▶

Back

Close

Full Screen / Esc

Printer-friendly Version

Interactive Discussion



section we seek to evaluate the behavior of PMF2 and the appearance of its solutions for AMS synthetic datasets for which the true solution is known and for which well-specified and realistic noise is the only additional content in the data matrix. This type of analysis will help in the interpretation of the solutions from real cases.

### 5 3.2.1 Solutions of synthetic data base cases

#### *Solutions as a function of number of factors*

As AMS organic datasets have a specific structure with strong interrelation across  $m/z$ 's and auto- and cross-correlation time scales of the order of hours to days for most components and datasets, it is of interest to examine what PMF2 reports when too few or too many factors are requested by the user when the correct number of factors is known.

10  $Q/Q_{\text{exp}}$ -values and maximum value of RotMat for the two- (and 3-) factor synthetic base case for solutions up to 7 factors are shown in Fig. 3b (3c) for FPEAK=0.  $Q/Q_{\text{exp}}$  is  $\gg 1$  for the one-factor solution and is  $\approx 1$  for all solutions of 2 (3) or more factors. This is the expected behavior; one factor should not fully explain the data and a high residual is reasonable. With the addition of a second (third) factor, most of the dataset is explained and the residual is on the order of the noise. As the simulated noise is white and thus has a large number of degrees of freedom, solutions with more than two (three) factors are not able to explain more of the data and  $Q/Q_{\text{exp}}$  is approximately constant. Max(RotMat) does not show a clear a trend with number of factors. The maximum is at four (two) factors and a local minimum occurs at five (six) factors. No criterion for choosing the correct number of factors from max(RotMat) can be determined from these cases.

25 Mass spectra and time series for the 2- to 5- factor solutions of the 2- and 3-factor synthetic base cases are shown in Figs. S5 and S6 at <http://www.atmos-chem-phys-discuss.net/8/6729/2008/acpd-8-6729-2008-supplement.pdf>. Mass fractions of the 2- to 7-factor solutions of the 2- and 3-factor synthetic base

---

## Organic components from PMF of Q-AMS data

I. M. Ulbrich et al.

---

Title Page

Abstract

Introduction

Conclusions

References

Tables

Figures

◀

▶

◀

▶

Back

Close

Full Screen / Esc

Printer-friendly Version

Interactive Discussion



**Organic components  
from PMF of Q-AMS  
data**

I. M. Ulbrich et al.

Title Page

Abstract

Introduction

Conclusions

References

Tables

Figures

◀

▶

◀

▶

Back

Close

Full Screen / Esc

Printer-friendly Version

Interactive Discussion

cases for  $F_{PEAK}=0$  are shown in Fig. 4b and c. The correct number of factors (2 or 3) reproduces the input factors ( $R_{MS}$ ,  $R_{TS}>0.99$ ) very well. When more factors are calculated, factors highly similar to the input factors are retained and the additional factors have strong resemblance to one of these factors. For example, the 4-factor solution of the 3-factor base case has OOA-I and OOA-II factors ( $R_{MS}$  and  $R_{TS}>0.99$  compared to the input for both factors) but two HOA factors appear ( $R_{MS}>0.99$  compared with the input,  $R_{TS}=0.95$ ,  $0.98$  compared with the input) with 17 and 20% of the fit mass, respectively. The HOA factor has been “split” into two. This behavior continues with more factors in both base cases. Split factors have very similar MS and TS to each other and to the same factor in the  $p-1$  factor solution with approximately equal splitting of the mass between the like factors.

The 3-factor solution of the 2-factor base case shows another interesting behavior (Fig. S5b). One factor is very similar to the HOA input factor ( $R_{MS}>0.99$ ,  $R_{TS}=0.99$ ) and one factor very similar to the OOA input factor ( $R_{MS}>0.99$ ,  $R_{TS}=0.98$ ). The third factor's spectrum includes high-signal peaks from both the HOA and OOA spectra. It is highly correlated with both the input HOA and OOA spectra ( $R_{MSHOA}=0.91$ ,  $R_{MSOOA}=0.70$ , whereas  $R_{MS}$  between the input HOA and OOA spectra is only 0.35). The third factor lies  $6^\circ$  out of the plane of the HOA and OOA factors. A true linear combination would be in the HOA/OOA plane ( $0^\circ$ ); in two-factor synthetic cases without added Gaussian and electronic noise, the third factor is a true linear combination of the HOA and OOA factors and lies in the plane of the HOA and OOA factors. Thus it is the presence of the noise that allows the third factor to be slightly outside the 2-component plane. It is hard to determine whether this is a “splitting” of the HOA factor or whether his factor represents a “mix” of the true HOA and OOA spectra, especially because of the increased fraction of  $m/z$  44 compared to the input HOA (4% in the HOA input, 14% in the mixed factor). We choose to call this factor a “split” of the HOA factor since it has very high correlation and visual similarity to primary spectra (e.g., diesel exhaust) (Fig. 6c). This third factor has a time series that is similar to the HOA time series ( $R_{TS}=0.98$ ) and it takes 19% of the total mass, more from HOA than OOA mass. The



**Organic components  
from PMF of Q-AMS  
data**

I. M. Ulbrich et al.

Title Page

Abstract

Introduction

Conclusions

References

Tables

Figures

◀

▶

◀

▶

Back

Close

Full Screen / Esc

Printer-friendly Version

Interactive Discussion



profile of this split factor is very similar (Pearson  $R > 0.9$ ) to multiple mass spectra from the AMS Spectral Database as shown in Fig. 6c, including SOA from chamber reactions (e.g.,  $\beta$ -caryophyllene +  $O_3$ ,  $\alpha$ -terpinene +  $O_3$ ), and particles from combustion of biomass or biomass components (e.g., ceanothus, juniper, and 6 others). In fact, this “split” spectrum has higher correlation with many of the SOA and BBOA spectra than the OOA-II spectrum from the real Pittsburgh case (Fig. 6a).

The 4-factor solution of the same case (Fig. S5c) produces a MS which is highly correlated with both the OOA and HOA input factors ( $R_{MS} = 0.80$  and  $R_{MS} = 0.84$ , respectively) though it has the TS of the HOA factor ( $R_{TS} = 0.98$ ). This factor lies  $3^\circ$  out of the plane of the HOA and OOA factors. We therefore choose to call it a “mixed” HOA/OOA factor. Because we created a 2-factor input, we know that this is not a true factor. Nevertheless, it also has high correlation ( $R_{MS} > 0.9$ ) with spectra from the database including 6 types of VOC+ $O_3$  chamber SOA, aged diesel exhaust, and 11 types of BBOA. No mixed factors are observed in the 3-factor base case, indicating that the tendency of PMF to “mix” or “split” factors in its solutions (when too many factors are requested) is not easily predicted and can shift with relatively small changes in the input matrix (such as the addition of an OOA-II input factor with 10% of the mass here).

No unrealistic factors that consist of a single  $m/z$  were observed in solutions of the synthetic datasets up to 20 factors.

### *Rotations of the 3-factor synthetic base case solution*

In this section we examine the range of “rotatability” of the solutions and the values of FPEAK that best reproduce the input solution. The FPEAK values required for the  $Q/Q_{exp}$  increase from its minimum by e.g. 10% condition in synthetic data can be quite large; FPEAK =  $\pm 1.5$  for the 3-factor base case gives increase in  $Q/Q_{exp}$  of only about 2% (Fig. 8). MS and TS spanning this range of solutions are shown in Fig. S7 at <http://www.atmos-chem-phys-discuss.net/8/6729/2008/acpd-8-6729-2008-supplement.pdf>. Changes in the MS and TS are similar to those in

---

**Organic components  
from PMF of Q-AMS  
data**I. M. Ulbrich et al.

---

[Title Page](#)[Abstract](#)[Introduction](#)[Conclusions](#)[References](#)[Tables](#)[Figures](#)[⏪](#)[⏩](#)[◀](#)[▶](#)[Back](#)[Close](#)[Full Screen / Esc](#)[Printer-friendly Version](#)[Interactive Discussion](#)

the real Pittsburgh case. In the TS, mass concentrations during periods in which all factors have non-zero mass concentration show more variation as FPEAK is changed and remain approximately constant in periods in which at least one factor has near-zero mass concentration. The MS change with FPEAK is most dramatic in the OOA-II MS, while the HOA and OOA-I MS change very little with FPEAK. The changes of the OOA-II MS with FPEAK are similar to those of the real Pittsburgh case, with a strong resemblance to the HOA factor at negative FPEAK values ( $R_{MS} > 0.9$  for  $FPEAKs < -0.4$ ) and change of its fraction of  $m/z$  44 with increasing FPEAK values, from 7.5% at FPEAK 0 to 9.5% at FPEAK 1.0.

A graphical diagnostic of the correlations of each of the three factors versus each other and how they change with FPEAK is shown in Fig. 10b. The input factors are reproduced best with slightly negative FPEAK values (between 0 and  $-0.2$ ) (Fig. 10c, d). The effect of FPEAK on the correlation of the factors is extremely similar to that in the real Pittsburgh case, with positive values of FPEAK making them more correlated and the mass spectra less correlated and negative values of FPEAK doing the opposite. The length of the segment between adjacent FPEAK solutions indicates the relative amount of change between the factors. After a larger initial change between 0 and 0.2, the segments between incremental positive FPEAKs are much shorter than those between incremental negative FPEAKs, indicating that incremental positive FPEAKs change the solution less than incremental negative FPEAKs.

### *Residuals in the 3-factor synthetic base case*

The  $Q/Q_{exp}$  contribution as a function of time for the 1-, 2-, and 3-factor solutions of the 3-factor base case are shown in Fig. 7c. The 1- and 2-factor solutions have distinct structure which indicates that all of the variation in the data has not been fit. In the three-factor solution, which reproduces the three input factors very well ( $R_{MS} > 0.99$  and  $R_{TS} > 0.99$  for all three factors), the  $Q/Q_{exp}$  contribution has no visible structure. SVD of the residual matrix (Fig. 3d) shows that even with 15 more factors, less than 75% of the remaining variance can be explained. These observations indicate that only



random noise remains.

### 3.2.2 Separation of correlated factors

Another important question when analyzing PMF results is: how similar (correlated) can the factors be (in MS, TS, or both) and still be correctly retrieved by PMF? In one extreme case, two different sources that are completely correlated in time ( $R_{TS} \sim 1$ ) cannot be separated by PMF or any other factorization method, as there is no information for their separation. Even if their MS are very different, only the sum of the two sources can be retrieved. Similarly, two sources with very highly correlated MS ( $R_{MS} \sim 1$ ) cannot be retrieved separately, irrespective of how different their time series are; again, only their sum can be retrieved. If the correlation between the input factors is plotted in a graph with  $R_{MS}$  as the x-coordinate and  $R_{TS}$  as the y-coordinate (as in Fig. 10a, b), the “irretrievable” regions include the edges of the plot near  $R_{TS}$  or  $R_{MS}=1$ . It is of interest to evaluate how far two factors have to be from those edges to be retrievable with some accuracy by PMF, and how the rotational uncertainty changes as the factors are closer or farther from those edges. Likely this “distance” from the edges will not be an absolute criterion, but will depend on the fraction of the mass accounted by each factor, i.e. a small factor may be harder to retrieve in this situation since its variance is smaller compared to noise and potential variations in the spectra of the larger components.

#### *Separation of correlated factors: two-factor synthetic cases*

Figure 11a shows the relationship between the two PMF factors for each of the correlated variations on the base cases described in Sect. 2.3.2 and Fig. 11b–d show how the solutions vary with FPEAK. The FPEAKs displayed represent an increase in  $Q/Q_{exp}$  of 0.2% to 0.6% from the FPEAK=0 solution for each input case. As in the real data case, the behavior of positive values of FPEAK is to mix the time series, making them more correlated and the mass spectra less correlated, moving these solutions toward the upper left of the graph. Negative values of FPEAK do the opposite. The FPEAK=0

## Organic components from PMF of Q-AMS data

I. M. Ulbrich et al.

Title Page

Abstract

Introduction

Conclusions

References

Tables

Figures

◀

▶

◀

▶

Back

Close

Full Screen / Esc

Printer-friendly Version

Interactive Discussion



---

**Organic components  
from PMF of Q-AMS  
data**

---

I. M. Ulbrich et al.

---

[Title Page](#)[Abstract](#)[Introduction](#)[Conclusions](#)[References](#)[Tables](#)[Figures](#)[⏪](#)[⏩](#)[◀](#)[▶](#)[Back](#)[Close](#)[Full Screen / Esc](#)[Printer-friendly Version](#)[Interactive Discussion](#)

solutions do not usually reproduce the input case; input cases are however reproduced closely with FPEAKs between  $-0.2$  and  $+0.2$ . Note that, for most input cases, the PMF solutions produce a cluster of solutions with negative FPEAKs and a cluster with positive FPEAK solutions (in both cases with small  $dR/dFPEAK$ , i.e. the solutions have “hit a wall” and do not change much as FPEAK increases), and then a rapid transition between those groups of solutions (with large  $dR/dFPEAK$ ). The amount of rotation between the factors, indicated by the length of the segments between marked FPEAKs, increases for input cases further from the origin. Cases with more correlated input factors (inputs closer to  $R=1$ ) rotate more with FPEAK while maintaining the same relative change in  $Q/Q_{\text{exp}}$  than cases with less correlated factors (inputs closer to  $R=0$ ).

We are also interested in understanding how closely PMF solutions resemble the input cases, i.e., how well can PMF reproduce the input cases and does that depend on the correlation of input factors? We now consider the correlation between the input factors and the PMF output factors. In this case  $R_{\text{MS}}$  or  $R_{\text{TS}}=1$  means that the factor was retrieved perfectly by PMF. These correlations are shown in Fig. 12 for all of the cases described above. The range of FPEAKs used is the same as those in Fig. 11. Factors with very low correlation in one axis and medium correlation in the other are retrieved with little uncertainty, as expected. As either  $R_{\text{MS}}$  or  $R_{\text{TS}}$  of the input factors increases towards 1 (cases further from the major axes origin), the factors have increasing rotatability (a surrogate for uncertainty as described earlier). Cases in which both the MS and TS are highly correlated (approaching the upper right of the plot) are usually retrieved well at FPEAK=0, but are retrieved poorly with only small changes in FPEAK. The effect is continuous, but the deviations become especially large as  $R_{\text{MS}}$  and/or  $R_{\text{TS}}$  approach 0.8. As expected, PMF is able to retrieve easily those factors whose contribution to the total data matrix  $\mathbf{X}$  is very distinct from that of the other factors and has difficulty separating highly correlated factors.

## Separation of correlated factors: three-factor synthetic cases

The correlations between the factors in the variations on the 3-factor synthetic base case are shown in Fig. 13a. Replacing the OOA-II MS with the SOA or BBOA MS changes the input correlations slightly, while replacing the OOA-II MS with the FA MS decreases the correlation between the HOA and the third factor MS sharply (from 0.73 to 0.36 with OOA-II and FA, respectively) and increases the correlation between OOA-I and the third factor slightly (from 0.82 to 0.89, respectively). We now consider how well PMF can retrieve these factors with average mass fractions between 0.7% and 9.6%.

The ability to retrieve the small factor is assessed by correlation with the input factor (Fig. 13b). For mass fractions of 9.6%, the small factor was retrieved well with  $R_{MS}$  and  $R_{TS} > 0.98$ . As the average mass fraction of the small factor is decreased, the small factor is not retrieved accurately in some cases. For all cases except the BBOA case, both the MS and TS of the small factor can be retrieved with  $R_{MS} > 0.98$  and  $R_{TS} > 0.91$  when the small factor has at least 5% of the average mass. As the average mass fraction of the small factor decreases, the third factor may have greater similarity to HOA or OOA-I in MS or TS than to the input factor, or the MS may appear to be a mix of HOA, OOA, and/or the third factor MS. These behaviors have elements similar to the splitting behavior observed in the synthetic base cases when too many factors were chosen. Although the mass spectrum of the third factor input does not change as the mass is reduced, the ability of PMF to retrieve both the mass spectrum and time series decreases as the fraction of the mass decreases. Based on this case study, we conclude that in Q-AMS datasets with only Gaussian noise, factors with a mass fraction of at least 5% are likely to be retrievable with sufficient accuracy for reliable interpretation. This should be a lower limit for real cases in which the noise may have additional structure.

### Organic components from PMF of Q-AMS data

I. M. Ulbrich et al.

Title Page

Abstract

Introduction

Conclusions

References

Tables

Figures

◀

▶

◀

▶

Back

Close

Full Screen / Esc

Printer-friendly Version

Interactive Discussion



## 4 Discussion

In the ambient and synthetic data we compared various criteria for determining number of factors. The criterion for choosing the number of factors based on the behavior of  $Q/Q_{\text{exp}}$  vs. number of factors has the expected behavior for the synthetic datasets but does not lead to a strong conclusion for the real data case (Fig. 3). The  $Q/Q_{\text{exp}}$  of the real dataset has a steep decrease from 1 to 2 factors, but a steady decrease with more factors does not point to a particular choice for number of factors. Solutions of the real and synthetic base cases with 2 or more factors have  $Q/Q_{\text{exp}} < 1$  for all. The lower values of  $Q/Q_{\text{exp}}$  for the real case with more than 3 factors may imply that the noise may be slightly overestimated in the real case. We believe that our choice of a three-factor solution is justified by tracer correlations, spectral comparisons and interpretation, and residual analysis, is a good physical explanation of the data and that the errors are calculated correctly. We conclude that a criterion based on a significant decrease in  $Q/Q_{\text{exp}}$  as the number of factors is increased is not sufficient to determine the correct number of factors in AMS datasets.

The criteria of the smallest maximum value of RotMat for the best solution proposed by Lee et al. (1999) is not met by any of the datasets. In the synthetic datasets,  $\max(\text{RotMat})$  gives no indication about the correct number of factors. Since the criterion is not met for synthetic datasets, we draw no conclusion from this statistic for real datasets and do not recommend this as a basis for choosing the correct number of factors in AMS data. RotMat values are larger in the real case than for the synthetic case, suggesting additional rotatability in the real case.

The splitting and mixing behavior seen in the synthetic datasets when too many factors were requested presents a clear warning that when evaluating a real dataset, the researcher must be careful about overinterpreting solutions with multiple factors, even though it may be tempting to “identify” additional sources and give them physical-sounding names. The characterized splitting behavior in which each split factor has about half the mass of the original factor may be specific to the PMF2 algorithm, as

### Organic components from PMF of Q-AMS data

I. M. Ulbrich et al.

Title Page

Abstract

Introduction

Conclusions

References

Tables

Figures

◀

▶

◀

▶

Back

Close

Full Screen / Esc

Printer-friendly Version

Interactive Discussion



---

**Organic components  
from PMF of Q-AMS  
data**I. M. Ulbrich et al.

---

Title Page

Abstract

Introduction

Conclusions

References

Tables

Figures

◀

▶

◀

▶

Back

Close

Full Screen / Esc

Printer-friendly Version

Interactive Discussion



other algorithms such as MCA (Zhang et al., 2007a) tend to split a factor into a dominant factor (in terms of mass) and a small factor. In particular, care must be taken because the spurious factors obtained due to “splitting” or “mixing” behavior have realistic-looking mass spectra and could easily be interpreted by the unsuspecting user as a real factor, though we know that in the synthetic cases these factors must be mathematical artifacts. In cases where splitting behavior occurs, overinterpretation is possible, though the estimated ratio of total HOA to total OOA will generally be correct within ~5%. In cases where mixing behavior occurs, non-existent factors could be retained. Thus, it is critical to use external tracers to confirm the interpretation. In the absence of these tracers, the lower order solution may be the best choice. In our ambient case, for example, factors 3–6 are mathematically good solutions. The fourth factor in the 4-factor solution of the real Pittsburgh dataset exhibits some of the behavior characterized by the splitting observed in the synthetic cases. The TS of this factor is very similar to the TS of the OOA-I factor (Fig. S1b at <http://www.atmos-chem-phys-discuss.net/8/6729/2008/acpd-8-6729-2008-supplement.pdf>) and these two factors share approximately equal portions of the mass (Fig. 4a). The MS correlates well with many types of OA measured by the AMS (Fig. 6b). While this factor may reflect true variability in OOA-I, we do not have an independent tracer to support this interpretation and prefer the 3-factor solution as the safest choice to avoid overinterpretation.

A key concern in having ambiguity in number of factors is whether the mass fraction of total OOA and HOA (and other major components such as BBOA) determined from a given PMF analysis depends on the number of factors that is used. The mass fraction of total HOA and OOA varies by approximately  $\pm 10\%$  in the real case and in the three-factor synthetic case and could be over- or underestimated depending on the choice of number of factors (Fig. 4). This determination is more complex in the two-factor synthetic case and depends strongly on whether the “mixed” factor is attributed to HOA or OOA, or to a new type of source. For solutions with more than 2 factors, both total HOA and total OOA could be underestimated while the mixed factor spuriously accounts for 20–26% of the mass. In the real case, the 2-factor solution slightly

---

**Organic components  
from PMF of Q-AMS  
data**I. M. Ulbrich et al.

---

[Title Page](#)[Abstract](#)[Introduction](#)[Conclusions](#)[References](#)[Tables](#)[Figures](#)[◀](#)[▶](#)[◀](#)[▶](#)[Back](#)[Close](#)[Full Screen / Esc](#)[Printer-friendly Version](#)[Interactive Discussion](#)

underestimates OOA. This behavior is counter to that seen by Lanz et al. (2007), where they observed that a 2-factor solution significantly overestimated OOA in Zurich in the summer. Nemitz et al. (2008) found that the 2-factor solution significantly underestimated OOA by 17% in their case. Thus the tendency for a 2-factor solution to over- or underestimate the OOA/HOA ratio is most likely dependent on the structure of a particular AMS dataset and no general trend is apparent.

In the ambient and synthetic cases we explored the use of FPEAK to explore rotations of the solutions. A  $\Delta Q/Q_{\text{exp}}$  over the minimum  $Q/Q_{\text{exp}}$  of  $\sim 1\%$  (rather than 10%, P. K. Hopke, personal communication, 2007) seems to give a more appropriate range of FPEAKs for Q-AMS datasets. Positive values of FPEAK mix the TS, making them more correlated and the MS less correlated, while negative values of FPEAK do the opposite (Figs. 10 and 11). Choice of a particular FPEAK solution is complex. Mathematically, values of zero in the true factors (in MS or TS) help to constrain the rotation, but they must be known a priori to justify a particular FPEAK solution (Paatero et al., 2005, 2002). We have no such a priori information in the Pittsburgh case to constrain any values in the TS or MS to zero, and so have no mathematical way to choose a particular value of FPEAK. We have followed the guidance of Paatero et al. (2002) and present a range of solutions for our dataset to describe the degree of rotational ambiguity (Fig. 9).

Is it possible, then, to support the choice of any particular rotation? Paatero et al. (2005) suggest use of a graphical method for choosing a rotation such that the source contribution factors (TS) show weak statistical independence near the x- and y-axes when contributions for pairs of factors are plotted in scatter plots. In AMS data, this usually requires less-correlated TS, i.e., negative FPEAKs. Based on our interpretation of the factors as primary OA, fresher SOA, and aged SOA, the concentrations of the factors may not be independent but may be linked by increases and decreases in regional dispersion and photochemistry, and such a rotation may not be warranted. The synthetic data solutions suggests that FPEAKs near zero reproduce the input solutions best and thus should be preferred when analyzing real datasets. FPEAKs of  $-0.8$

---

**Organic components  
from PMF of Q-AMS  
data**I. M. Ulbrich et al.

---

[Title Page](#)[Abstract](#)[Introduction](#)[Conclusions](#)[References](#)[Tables](#)[Figures](#)[⏪](#)[⏩](#)[◀](#)[▶](#)[Back](#)[Close](#)[Full Screen / Esc](#)[Printer-friendly Version](#)[Interactive Discussion](#)

and  $-0.6$  give third factors (OOA-II in solutions with FPEAKs  $> -0.6$ ) that exhibit some of the behaviors of splitting (they are similar to HOA, i.e., too close to the right edge of Fig. 10a), but this may not be sufficient for rejecting them. No behaviors are observed in the solutions at large positive FPEAKs to support exclusion of these solutions. A possible way to choose a rotation would be to maximize the correlation of the factor TS with external tracers. Though this has no mathematical basis, it could be justified when the researcher is confident of his/her interpretation of the factors. Note, however, that the interdependence of MS and TS during rotations strongly suggests that the change in MS with FPEAK also be considered. Figure 14 shows the correlation between each factor MS and TS with selected reference spectra and tracer species, respectively, versus FPEAK. While correlations with TS could support the choice of a positive FPEAK, correlations with the MS suggest that extreme FPEAKs distort the MS and FPEAKs closer to 0 appear more reasonable. Though this is not a very strong criterion for this dataset, based on the comparison with the synthetic solutions we believe that the FPEAK=0 solution is the best representation of the retrievable factors for this case.

Studies with 2-factor synthetic cases demonstrate that most input cases, regardless of the correlation of the factors, could be retrieved well by PMF (Fig. 12). Small changes in FPEAK can change the solutions dramatically in cases with more correlated input factors; i.e., they are much more sensitive to rotation by FPEAK. Separation of highly-correlated factors is a potential limitation of this technique with Q-AMS data. HR-ToF-MS datasets contain more chemical information at each nominal  $m/z$  with both oxygenated and hydrocarbon ions (e.g.,  $C_2H_3O^+$  and  $C_3H_7^+$  at  $m/z$  43) that will reduce the  $R_{MS}$  between true high-resolution components, increasing the retrievability of factors in those datasets. Use of such diagnostic plots in Q-AMS and HR-ToF-AMS factorization is encouraged. We feel that great care must be taken when interpreting solutions in which output factors have MS and/or TS with  $R > 0.9$ , especially if they exhibit some characteristics of splitting or mixing behavior.

Studies with 3-factor synthetic cases demonstrate that the correlation between the



---

**Organic components  
from PMF of Q-AMS  
data**I. M. Ulbrich et al.

---

[Title Page](#)[Abstract](#)[Introduction](#)[Conclusions](#)[References](#)[Tables](#)[Figures](#)[⏪](#)[⏩](#)[◀](#)[▶](#)[Back](#)[Close](#)[Full Screen / Esc](#)[Printer-friendly Version](#)[Interactive Discussion](#)

input factors can affect the ability to retrieve factors with a small average mass fraction. Factors with at least 5% of the mass were retrieved well in all cases studied. Factors with smaller mass fractions were often poorly retrieved, with their mass spectra not found and instead a 3rd component appearing due to behavior similar to “splitting” or “mixing” of the 2 dominant factors (Fig. 13). The inability to retrieve factors with a smaller fraction of the mass is a likely limitation of this technique with Q-AMS data.

The residual in the real dataset has considerable structure that changes very little with the addition of more factors, in stark contrast to the residual of the synthetic datasets, where the residual reflects only the noise added to the dataset when enough factors are chosen (Figs. 7, S2). Similar results are reported in other component analyses of AMS data (Lanz et al., 2007; Zhang et al., 2005a), so none of these studies is fitting all of the real structure in the dataset. This distinct structure in  $Q/Q_{\text{exp}}$  in the real dataset may imply that, though three factors have explained as much of the data as is possible with a bilinear model, something is changing during these periods of high residual and rotatability of the factors (Fig. 9). We hypothesize that aerosol partitioning or processing results in continuously, non-linearly varying spectra that cannot be fit well with the bilinear model. Evaporation and condensation of the semi-volatile OOA-II component of the organic aerosol may lead to slight changes in composition that cannot be fit well with a constant mass spectrum. These changes in spectra, especially when fresh SOA/OOA is important in a dataset, may be a key limitation of the retrievability of the components in Q-AMS spectra. This should be a topic of further research.

## 5 Conclusions

An organic mass spectral dataset from Pittsburgh in 2002 was analyzed by PMF. The behavior of PMF solutions with AMS data was characterized using several 2- and 3-factor synthetic datasets with realistic noise. Three factors are identified from the Pittsburgh data. Two factors (HOA and OOA-I) are similar to the factors identified by Zhang

et al. (2005a). A third factor was identified as OOA-II, a semi-volatile, less-oxidized OOA whose time series correlates strongly with those of ammonium nitrate and ammonium chloride. There is no clear support for justifying solutions with more than three factors. Note that this does not mean that there are only three sources, but rather that sources with very similar spectra (e.g., gasoline and diesel engine emissions) cannot be separated in this analysis with UMR data. Solutions with more than 3 factors appear to “split” the existing factors, a characteristic observed in synthetic datasets when more factors were calculated than existed in the input. Additional factors make minor changes in the residual of the Pittsburgh case, but appear to primarily refit the same variation in the data. We hypothesize that the structure in the residual reflects continuous, non-linear changes in the OOA-II spectra as the aerosols partition or age, which cannot be fit by the bilinear model.

While the determination of a “best” solution is subjective and challenging in a real dataset, measures can be taken to make this process more quantitative. Correct specification of estimated error values,  $\sigma$ , for the dataset help prevent nonsensical factors (e.g., MS with one dominant fragment, TS that oscillate between zero and several  $\mu\text{g}/\text{m}^3$  over short time intervals). Real and synthetic data indicate that plots of  $Q/Q_{\text{exp}}$  vs. number of factors give a good indication of the minimum number of factors, but are not a sufficient criterion for choosing the best number of factors. Max(RotMat) does not give any useful indication of the best number of factors. Interpretation of the PMF solutions should start with the factor profiles (here, mass spectra). We have created a public, web-accessible database of AMS spectra which can be compared to spectra from PMF results to help identify and name the factors. Spectral similarity is not sufficient for naming factors, as “mixed” or “split” factors can have high similarity with many spectra in the database. Thus, correlations of time series with species not included in the PMF analysis are critical to give additional evidentiary support to a selected solution and interpretation. Best identification is made from supporting evidence for both mass spectra and correlation with tracer time series. It is imperative that both mass spectra and time series for each factor be presented because they are interdependent.

---

**Organic components  
from PMF of Q-AMS  
data**I. M. Ulbrich et al.

---

[Title Page](#)[Abstract](#)[Introduction](#)[Conclusions](#)[References](#)[Tables](#)[Figures](#)[⏪](#)[⏩](#)[◀](#)[▶](#)[Back](#)[Close](#)[Full Screen / Esc](#)[Printer-friendly Version](#)[Interactive Discussion](#)

---

**Organic components  
from PMF of Q-AMS  
data**I. M. Ulbrich et al.

---

[Title Page](#)[Abstract](#)[Introduction](#)[Conclusions](#)[References](#)[Tables](#)[Figures](#)[◀](#)[▶](#)[◀](#)[▶](#)[Back](#)[Close](#)[Full Screen / Esc](#)[Printer-friendly Version](#)[Interactive Discussion](#)

Use of diagnostic plots showing the correlation between the factors in each solution is encouraged. It is unlikely that components with 5% or less of the mass are meaningful. If factors are highly correlated in mass spectra or time series, interpretation must be considered carefully; if factors are more distinct, one can be more confident of the results. Solutions with two factors may over- or underestimate the fraction of OOA, and this behavior appears to be dependent on the structure of the dataset. There is generally not a mathematical basis for choosing a particular rotation (using the parameter FPEAK), though correlation with external tracers and reference mass spectra may be used to narrow the set of plausible rotations. Presentation of solutions for several representative FPEAKs will allow readers to understand the rotational behavior and variability of the factors. A  $\Delta Q/Q_{\text{exp}}$  over the minimum  $Q/Q_{\text{exp}}$  of  $\sim 1\%$  seems to be give appropriate range of FPEAKs for Q-AMS datasets. Synthetic data cases support the choice of FPEAK values near 0 for Q-AMS data.

## Appendix A

### Calculation of error values for synthetic datasets

The calculation of error values for real and synthetic data is described schematically in Fig. A1. In real datasets, the error,  $\sigma_{\text{diff}}$ , for the total difference signal (open beam – closed beam) at each point is estimated by

$$\sigma_{\text{diff}} = \alpha \sqrt{\frac{I_o + I_c}{t_s}} \quad (\text{A1})$$

where  $\alpha$  is a factor of 1.2 applied to account for Gaussian-distributed single ion signals,  $I_o$  and  $I_c$  represent the signal, in ion Hz, of the open and closed beams, respectively, and  $t_s$  is the time, in seconds, spent sampling each  $m/z$  (Allan et al., 2003). The error for a particular species (e.g., organics),  $\sigma_{\text{species}}$ , is calculated by propagating the

application of a “fragmentation matrix” (Allan et al., 2004) to the total difference error  $\sigma_{\text{diff}}$ , such that

$$\sigma_{\text{species}} = \sqrt{\sigma_{\text{diff}}^2 \times \text{Fragmentation Matrix}^2} \quad (\text{A2})$$

where the notations for square and square root apply to the matrix elements. Note that in the synthetic case, neither the open beam nor closed beam values are known, so  $\sigma_{\text{diff}}$  and  $\sigma_{\text{species}}$  cannot be calculated directly. We therefore proceed through the following steps to estimate errors for synthetic data. The synthetic organics matrix,  $\mathbf{X}_{\text{input}}$ , is converted from  $\mu\text{g}/\text{m}^3$  to Hz using the campaign-averaged conversion factor from the real Pittsburgh dataset. The matrices of inorganic species and air (in Hz) are added the organics matrix to give a total estimated difference matrix. The calculation of the  $\sigma_{\text{diff}}$  matrix (Eq. A1) requires an estimated closed beam signal matrix, the estimated open beam signal, and the sample time per  $m/z$ . The closed signal is estimated as the campaign-averaged closed mass spectrum. The open signal is estimated as the estimated total difference matrix (representing open – closed) plus the campaign-averaged closed mass spectrum. The sample time per  $m/z$  is estimated as the campaign-averaged sample time. The calculation of the  $\sigma_{\text{organic}}$  matrix (Eq. A2) uses the organics fragmentation matrix from the Pittsburgh dataset. The  $\sigma_{\text{organic}}$  matrix is then converted from Hz back to  $\mu\text{g}/\text{m}^3$  using the inverse of the campaign-averaged conversion factor used above. Comparison of the magnitude of the errors of the real dataset and the synthetic dataset is shown in Fig. A2 indicating that this procedure results in noise estimates very similar to those from the real dataset.

*Acknowledgements.* We are grateful to M. Hannigan, J. Milford, G. Brinkman, P. K. Hopke, P. Paatero, V. Lanz, A. Prevot, C. Hueglin, and the broader AMS community for helpful discussions. This research was supported by grants EPA STAR RD-83216101-0, NSF ATM-0449815 and NASA NNG04GA67G, and by NASA graduate fellowship NNG05GQ50H to I. Ulbrich. This paper has not been reviewed by either funding agency and thus no endorsement should be inferred.

## Organic components from PMF of Q-AMS data

I. M. Ulbrich et al.

Title Page

Abstract

Introduction

Conclusions

References

Tables

Figures

◀

▶

◀

▶

Back

Close

Full Screen / Esc

Printer-friendly Version

Interactive Discussion



## References

- Aiken, A. C., DeCarlo, P., Kroll, J. H., Worsnop, D. R., Huffman, J. A., Docherty, K., Ulbrich, I. M., Mohr, C., Kimmel, J. R., Sueper, D., Zhang, Q., Sun, Y. L., Trimborn, A., Northway, M., Ziemann, P. J., Canagaratna, M., Alfarra, M. R., Prevot, A. S. H., Dommen, J., Duplissy, A., Metzger, A., Baltensperger, U., and Jimenez, J. L.: O/C and OM/OC ratios of primary, secondary, and ambient organic aerosols with high-resolution time-of-flight aerosol mass spectrometry, *Environ. Sci. Technol.*, in press, 2008.
- Alfarra, M. R.: Insights into atmospheric organic aerosols using an Aerosol Mass Spectrometer, Thesis, University of Manchester, 2004.
- Alfarra, M. R., Coe, H., Allan, J. D., Bower, K. N., Boudries, H., Canagaratna, M. R., Jimenez, J. L., Jayne, J. T., Garforth, A. A., Li, S. M., and Worsnop, D. R.: Characterization of urban and rural organic particulate in the Lower Fraser Valley using two Aerodyne Aerosol Mass Spectrometers, *Atmos. Environ.*, 38, 5745–5758, 2004.
- Alfarra, M. R., Prevot, A. S. H., Szidat, S., Sandradewi, J., Weimer, S., Lanz, V. A., Schreiber, D., Mohr, M., and Baltensperger, U.: Identification of the mass spectral signature of organic aerosols from wood burning emissions, *Environ. Sci. Technol.*, 41, 5770–5777, 2007.
- Allan, J. D., Jimenez, J. L., Williams, P. I., Alfarra, M. R., Bower, K. N., Jayne, J. T., Coe, H., and Worsnop, D. R.: Quantitative sampling using an Aerodyne Aerosol Mass Spectrometer – 1. Techniques of data interpretation and error analysis, *J. Geophys. Res.-Atmos.*, 108, 4090, doi:10.1029/2002JD002358, 2003.
- Allan, J. D., Delia, A. E., Coe, H., Bower, K. N., Alfarra, M. R., Jimenez, J. L., Middlebrook, A. M., Drewnick, F., Onasch, T. B., Canagaratna, M. R., Jayne, J. T., and Worsnop, D. R.: A generalised method for the extraction of chemically resolved mass spectra from Aerodyne Aerosol Mass Spectrometer data, *J. Aerosol Sci.*, 35, 909–922, 2004.
- Bahreini, R., Keywood, M. D., Ng, N. L., Varutbangkul, V., Gao, S., Flagan, R. C., Seinfeld, J. H., Worsnop, D. R., and Jimenez, J. L.: Measurements of secondary organic aerosol from oxidation of cycloalkenes, terpenes, and m-xylene using an Aerodyne Aerosol Mass Spectrometer, *Environ. Sci. Technol.*, 39, 5674–5688, 2005.
- Brinkman, G., Vance, G., Hannigan, M. P., and Milford, J. B.: Use of synthetic data to evaluate positive matrix factorization as a source apportionment tool for PM<sub>2.5</sub> exposure data, *Environ. Sci. Technol.*, 40, 1892–1901, 2006.
- Cabada, J. C., Pandis, S. N., Subramanian, R., Robinson, A. L., Polidori, A., and Turpin, B.:

### Organic components from PMF of Q-AMS data

I. M. Ulbrich et al.

Title Page

Abstract

Introduction

Conclusions

References

Tables

Figures

◀

▶

◀

▶

Back

Close

Full Screen / Esc

Printer-friendly Version

Interactive Discussion



---

**Organic components  
from PMF of Q-AMS  
data**

---

I. M. Ulbrich et al.

---

[Title Page](#)[Abstract](#)[Introduction](#)[Conclusions](#)[References](#)[Tables](#)[Figures](#)[◀](#)[▶](#)[◀](#)[▶](#)[Back](#)[Close](#)[Full Screen / Esc](#)[Printer-friendly Version](#)[Interactive Discussion](#)

Estimating the secondary organic aerosol contribution to PM<sub>2.5</sub> using the EC tracer method, *Aerosol Sci. Technol.*, 38, 140–155, 2004.

Canagaratna, M., Worsnop, D., Zhang, Q., and Jimenez, J. L.: Aerosol mass spectrometry of organic aerosol in Houston, Texas, *Int. Aerosol Conference*, St. Paul, MN, 2006.

5 Canagaratna, M. R., Jayne, J. T., Ghertner, D. A., Herndon, S., Shi, Q., Jimenez, J. L., Silva, P. J., Williams, P., Lanni, T., Drewnick, F., Demerjian, K. L., Kolb, C. E., and Worsnop, D. R.: Chase studies of particulate emissions from in-use New York City vehicles, *Aerosol Sci. Technol.*, 38, 555–573, 2004.

10 Canagaratna, M. R., Jayne, J. T., Jimenez, J. L., Allan, J. D., Alfarra, M. R., Zhang, Q., Onasch, T. B., Drewnick, F., Coe, H., Middlebrook, A., Delia, A., Williams, L. R., Trimborn, A. M., Northway, M. J., DeCarlo, P. F., Kolb, C. E., Davidovits, P., and Worsnop, D. R.: Chemical and microphysical characterization of ambient aerosols with the Aerodyne Aerosol Mass Spectrometer, *Mass Spectrom. Rev.*, 26, 185–222, 2007.

15 Christensen, W., Williams, B., and Reese, C.: Bayesian approaches for pollution source location identification and apportionment, *American Association of Aerosol Researchers Conference*, Reno, NV, 2007.

Crosier, J., Jimenez, J. L., Allan, J. D., Bower, K. N., Williams, P. I., Alfarra, M. R., Canagaratna, M. R., Jayne, J. T., Worsnop, D. R., and Coe, H.: Technical note: Description and use of the new jump mass spectrum mode of operation for the Aerodyne Quadrupole Aerosol Mass Spectrometers (Q-AMS), *Aerosol Sci. Technol.*, 41, 865–872, 2007.

20 DeCarlo, P. F., Kimmel, J. R., Trimborn, A., Northway, M. J., Jayne, J. T., Aiken, A. C., Gonin, M., Fuhrer, K., Horvath, T., Docherty, K. S., Worsnop, D. R., and Jimenez, J. L.: Field-deployable, high-resolution, time-of-flight Aerosol Mass Spectrometer, *Anal. Chem.*, 78, 8281–8289, 2006.

25 Drewnick, F., Hings, S. S., DeCarlo, P., Jayne, J. T., Gonin, M., Fuhrer, K., Weimer, S., Jimenez, J. L., Demerjian, K. L., Borrmann, S., and Worsnop, D. R.: A new time-of-flight Aerosol Mass Spectrometer (ToF-AMS) – instrument description and first field deployment, *Aerosol Sci. Technol.*, 39, 637–658, 2005.

30 Dzepina, K., Arey, J., Marr, L. C., Worsnop, D. R., Salcedo, D., Zhang, Q., Onasch, T. B., Molina, L. T., Molina, M. J., and Jimenez, J. L.: Detection of particle-phase polycyclic aromatic hydrocarbons in Mexico City using an Aerosol Mass Spectrometer, *Int. J. Mass Spectrom.*, 263, 152–170, 2007.

Engel-Cox, J. and Weber, S. A.: Compilation and assessment of recent positive matrix factor-

- ization and UNMIX receptor model studies on fine particulate matter source apportionment for the eastern United States, *J. Air Waste Manag. Assoc.*, 57, 1307–1316, 2007.
- Fuzzi, S., Decesari, S., Facchini, M. C., Matta, E., Mircea, M., and Tagliavini, E.: A simplified model of the water soluble organic component of atmospheric aerosols, *Geophys. Res. Lett.*, 28, 4079–4082, 2001.
- Hemann, J. G., Brinkman, G. L., Dutton, S. J., Hannigan, M. P., Milford, J. B., and Miller, S. L.: Assessing positive matrix factorization model fit: A new method to estimate uncertainty and bias in factor contributions at the daily time scale, *Atmos. Chem. Phys. Discuss.*, 8, 2977–3026, 2008, <http://www.atmos-chem-phys-discuss.net/8/2977/2008/>.
- Hoyer, P. O.: Non-negative matrix factorization with sparseness constraints, *J. Machine Learning Res.*, 5, 1457–1469, 2004.
- Jayne, J. T., Leard, D. C., Zhang, X. F., Davidovits, P., Smith, K. A., Kolb, C. E., and Worsnop, D. R.: Development of an Aerosol Mass Spectrometer for size and composition analysis of submicron particles, *Aerosol Sci. Technol.*, 33, 49–70, 2000.
- Jimenez, J. L., Jayne, J. T., Shi, Q., Kolb, C. E., Worsnop, D. R., Yourshaw, I., Seinfeld, J. H., Flagan, R. C., Zhang, X. F., Smith, K. A., Morris, J. W., and Davidovits, P.: Ambient aerosol sampling using the aerodyne Aerosol Mass Spectrometer, *J. Geophys. Res.-Atmos.*, 108, 8425, doi:10.1029/2001JD001213, 2003.
- Kanakidou, M., Seinfeld, J. H., Pandis, S. N., Barnes, I., Dentener, F. J., Facchini, M. C., Van Dingenen, R., Ervens, B., Nenes, A., Nielsen, C. J., Swietlicki, E., Putaud, J. P., Balkanski, Y., Fuzzi, S., Horth, J., Moortgat, G. K., Winterhalter, R., Myhre, C. E. L., Tsigaridis, K., Vignati, E., Stephanou, E. G., and Wilson, J.: Organic aerosol and global climate modelling: A review, *Atmos. Chem. Phys.*, 5, 1053–1123, 2005, <http://www.atmos-chem-phys.net/5/1053/2005/>.
- Kim, E., Hopke, P. K., and Edgerton, E. S.: Source identification of Atlanta aerosol by positive matrix factorization, *J. Air Waste Manag. Assoc.*, 53, 731–739, 2003.
- Lanz, V. A., Alfarra, M. R., Baltensperger, U., Buchmann, B., Hueglin, C., and Prevot, A. S. H.: Source apportionment of submicron organic aerosols at an urban site by linear unmixing of aerosol mass spectra, *Atmos. Chem. Phys. Discuss.*, 6, 11 681–11 725, 2006.
- Lanz, V. A., Alfarra, M. R., Baltensperger, U., Buchmann, B., Hueglin, C., and Prevot, A. S. H.: Source apportionment of submicron organic aerosols at an urban site by factor analytical modelling of aerosol mass spectra, *Atmos. Chem. Phys.*, 7, 1503–1522, 2007,

---

**Organic components  
from PMF of Q-AMS  
data**I. M. Ulbrich et al.

---

Title Page

Abstract

Introduction

Conclusions

References

Tables

Figures

◀

▶

◀

▶

Back

Close

Full Screen / Esc

Printer-friendly Version

Interactive Discussion





<http://www.atmos-chem-phys.net/7/1503/2007/>.

Lanz, V. A., Alfarra, M. R., Baltensperger, U., Buchmann, B., Hueglin, C., Szidat, S., Wehrli, M. N., Wacker, L., Weimer, S., Caseiro, A., Puxbaum, H., and Prevot, A. S. H.: Source apportionment of submicron organic aerosols during wintertime inversions by advanced factor analysis of aerosol mass spectra, *Environ. Sci. Technol.*, 42, 214–220, 2008.

Larsen, R. K. and Baker, J. E.: Source apportionment of polycyclic aromatic hydrocarbons in the urban atmosphere: A comparison of three methods, *Environ. Sci. Technol.*, 37, 1873–1881, 2003.

Lee, D. D. and Seung, H. S.: Learning the parts of objects by non-negative matrix factorization, *Nature*, 401, 788–791, 1999.

Lee, E., Chan, C. K., and Paatero, P.: Application of positive matrix factorization in source apportionment of particulate pollutants in Hong Kong, *Atmos. Environ.*, 33, 3201–3212, 1999.

Lu, J. H. and Wu, L. S.: Technical details and programming guide for a general two-way positive matrix factorization algorithm, *J. Chemometrics*, 18, 519–525, 2004.

Marcolli, C., Canagaratna, M. R., Worsnop, D. R., Bahreini, R., de Gouw, J. A., Warneke, C., Goldan, P. D., Kuster, W. C., Williams, E. J., Lerner, B. M., Roberts, J. M., Meagher, J. F., Fehsenfeld, F. C., Marchewka, M., Bertman, S. B., and Middlebrook, A. M.: Cluster analysis of the organic peaks in bulk mass spectra obtained during the 2002 New England Air Quality Study with an Aerodyne Aerosol Mass Spectrometer, *Atmos. Chem. Phys.*, 6, 5649–5666, 2006,

<http://www.atmos-chem-phys.net/6/5649/2006/>.

Maykut, N. N., Lewtas, J., Kim, E., and Larson, T. V.: Source apportionment of PM<sub>2.5</sub> at an urban improve site in Seattle, Washington, *Environ. Sci. Technol.*, 37, 5135–5142, 2003.

Murphy, D. M., Middlebrook, A. M., and Warshawsky, M.: Cluster analysis of data from the particle analysis by laser mass spectrometry (PALMS) instrument, *Aerosol Sci. Technol.*, 37, 382–391, 2003.

Murphy, D. M.: The design of single particle laser mass spectrometers, *Mass Spectrom. Rev.*, 26, 150–165, 2007.

Nemitz, E., Jimenez, J. L., Huffman, J. A., Canagaratna, M. R., Worsnop, D., and Guenther, A. B.: An eddy-covariance system for the measurement of surface/atmosphere exchange fluxes of submicron aerosol chemical species – first application above an urban area, *Aerosol Sci. Technol.*, in press, 2008.

Paatero, P. and Tapper, U.: Analysis of different modes of factor analysis as least squares fit

**Organic components  
from PMF of Q-AMS  
data**

I. M. Ulbrich et al.

Title Page

Abstract

Introduction

Conclusions

References

Tables

Figures

◀

▶

◀

▶

Back

Close

Full Screen / Esc

Printer-friendly Version

Interactive Discussion



---

**Organic components  
from PMF of Q-AMS  
data**

---

I. M. Ulbrich et al.

---

[Title Page](#)[Abstract](#)[Introduction](#)[Conclusions](#)[References](#)[Tables](#)[Figures](#)[◀](#)[▶](#)[◀](#)[▶](#)[Back](#)[Close](#)[Full Screen / Esc](#)[Printer-friendly Version](#)[Interactive Discussion](#)

problems, *Chemometrics and Intelligent Laboratory Systems*, 18, 183–194, 1993.

Paatero, P. and Tapper, U.: Positive matrix factorization: A non-negative factor model with optimal utilization of error estimates of data values, *Environmetrics*, 5, 111–126, 1994.

Paatero, P.: Least squares formulation of robust non-negative factor analysis, *Chemometrics and Intelligent Laboratory Systems*, 37, 23–35, 1997.

Paatero, P.: The multilinear engine – a table-driven, least squares program for solving multilinear problems, including the n-way parallel factor analysis model, *J. Comput. Graph. Stat.*, 8, 854–888, 1999.

Paatero, P.: User's guide for positive matrix factorization programs PMF2.Exe and PMF3.Exe, University of Helsinki, Finland, 2000.

Paatero, P., Hopke, P. K., Song, X. H., and Ramadan, Z.: Understanding and controlling rotations in factor analytic models, *Chemometrics and Intelligent Laboratory Systems*, 60, 253–264, 2002.

Paatero, P. and Hopke, P. K.: Discarding or downweighting high-noise variables in factor analytic models, *Analytica Chimica Acta*, 490, 277–289, 2003.

Paatero, P., Hopke, P. K., Begum, B. A., and Biswas, S. K.: A graphical diagnostic method for assessing the rotation in factor analytical models of atmospheric pollution, *Atmos. Environ.*, 39, 193–201, 2005.

Paatero, P.: Interactive comment on “Source apportionment of submicron organic aerosols at an urban site by linear unmixing of aerosol mass spectra” By V. A. Lanz, *Atmos. Chem. Phys. Discuss.*, 5, S5920–S5926, 2007a.

Press, W. H., Teukolsky, S. A., Vetterling, W. T., and Flannery, B. P.: *Statistical Description of Data*, in: *Numerical Recipes: The Art of Scientific Computing*, Cambridge University Press, New York, USA, 720–772, 2007.

Ramadan, Z., Song, X. H., and Hopke, P. K.: Identification of sources of Phoenix aerosol by positive matrix factorization, *J. Air Waste Manag. Assoc.*, 50, 1308–1320, 2000.

Reff, A., Eberly, S. I., and Bhave, P. V.: Receptor modeling of ambient particulate matter data using positive matrix factorization: Review of existing methods, *J. Air Waste Manag. Assoc.*, 57, 146–154, 2007.

Russell, L. M.: Aerosol organic-mass-to-organic-carbon ratio measurements, *Environ. Sci. Technol.*, 37, 2982–2987, 2003.

Sage, A. M., Weitkamp, E. A., Robinson, A. L., and Donahue, N. M.: Evolving mass spectra of the oxidized component of organic aerosol: results from aerosol mass spectrometer analyses

of aged diesel emissions, *Atmos. Chem. Phys.*, 8, 1139–1152, 2008,

<http://www.atmos-chem-phys.net/8/1139/2008/>.

Schauer, J. J., Rogge, W. F., Hildemann, L. M., Mazurek, M. A., and Cass, G. R.: Source apportionment of airborne particulate matter using organic compounds as tracers, *Atmos. Environ.*, 30, 3837–3855, 1996.

Schneider, J., Weimer, S., Drewnick, F., Borrmann, S., Helas, G., Gwaze, P., Schmid, O., Andreae, M. O., and Kirchner, U.: Mass spectrometric analysis and aerodynamic properties of various types of combustion-related aerosol particles, *Int. J. Mass Spectrom.*, 258, 37–49, 2006.

Stein, S., Mirokhin, Y., Tseckhovski, D., and Mallard, G.: The NIST Mass Spectral Search Program for the NIST/EPA/NIH Mass Spectral Library (Version 2.0), The Standard Reference Data Program of NIST, 2001.

Sullivan, A. P., Weber, R. J., Clements, A. L., Turner, J. R., Bae, M. S., and Schauer, J. J.: A method for on-line measurement of water-soluble organic carbon in ambient aerosol particles: Results from an urban site, *Geophys. Res. Lett.*, 31, L13105, doi:10.1029/2004GL019681, 2004.

Szidat, S., Jenk, T. M., Synal, H. A., Kalberer, M., Wacker, L., Hajdas, I., Kasper-Giebl, A., and Baltensperger, U.: Contributions of fossil fuel, biomass-burning, and biogenic emissions to carbonaceous aerosols in Zurich as traced by  $^{14}\text{C}$ , *J. Geophys. Res.-Atmos.*, 111, D07206, doi:10.1029/2005JD006590, 2006.

Turpin, B. J. and Huntzicker, J. J.: Secondary formation of organic aerosol in the Los Angeles basin – a descriptive analysis of organic and elemental carbon concentrations, *Atmospheric Environment Part a-General Topics*, 25, 207–215, 1991.

Turpin, B. J., Saxena, P., and Andrews, E.: Measuring and simulating particulate organics in the atmosphere: Problems and prospects, *Atmos. Environ.*, 34, 2983–3013, 2000.

Ulbrich, I. M. and Jimenez, J. L.: AMS Spectral Database, URL: <http://cires.colorado.edu/jimenez-group/AMSsd/>, 2007.

Williams, B. J., Goldstein, A. H., Kreisberg, N. M., and Hering, S. V.: An in-situ instrument for speciated organic composition of atmospheric aerosols: Thermal desorption aerosol gc/ms-fid (tag), *Aerosol Sci. Technol.*, 40, 627–638, 2006.

Xie, Y. L., Hopke, P. K., Paatero, P., Barrie, L. A., and Li, S. M.: Identification of source nature and seasonal variations of arctic aerosol by positive matrix factorization, *J. Atmos. Sci.*, 56, 249–260, 1999.

**Organic components  
from PMF of Q-AMS  
data**

I. M. Ulbrich et al.

Title Page

Abstract

Introduction

Conclusions

References

Tables

Figures

◀

▶

◀

▶

Back

Close

Full Screen / Esc

Printer-friendly Version

Interactive Discussion



---

**Organic components  
from PMF of Q-AMS  
data**I. M. Ulbrich et al.

---

Title Page

Abstract

Introduction

Conclusions

References

Tables

Figures

◀

▶

◀

▶

Back

Close

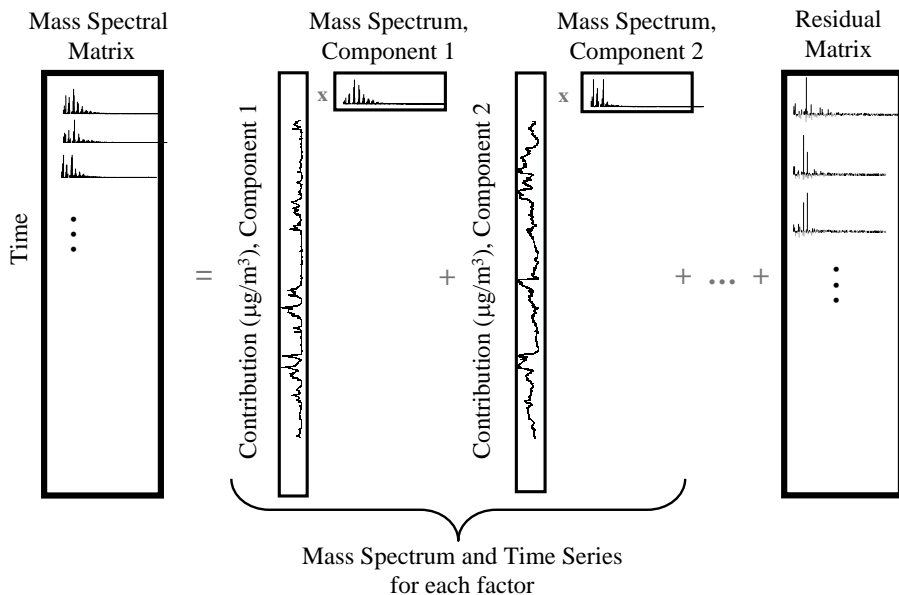
Full Screen / Esc

Printer-friendly Version

Interactive Discussion



- Zhang, Q., Stanier, C. O., Canagaratna, M. R., Jayne, J. T., Worsnop, D. R., Pandis, S. N., and Jimenez, J. L.: Insights into the chemistry of new particle formation and growth events in Pittsburgh based on aerosol mass spectrometry, *Environ. Sci. Technol.*, 38, 4797–4809, 2004.
- 5 Zhang, Q., Alfarra, M. R., Worsnop, D. R., Allan, J. D., Coe, H., Canagaratna, M. R., and Jimenez, J. L.: Deconvolution and quantification of hydrocarbon-like and oxygenated organic aerosols based on aerosol mass spectrometry, *Environ. Sci. Technol.*, 39, 4938–4952, 2005a.
- 10 Zhang, Q., Canagaratna, M. R., Jayne, J. T., Worsnop, D. R., and Jimenez, J. L.: Time- and size-resolved chemical composition of submicron particles in Pittsburgh: Implications for aerosol sources and processes, *J. Geophys. Res.-Atmos.*, 110, D07S09, doi:10.1029/2004JD004649, 2005b.
- 15 Zhang, Q., Worsnop, D. R., Canagaratna, M. R., and Jimenez, J. L.: Hydrocarbon-like and oxygenated organic aerosols in Pittsburgh: Insights into sources and processes of organic aerosols, *Atmos. Chem. Phys.*, 5, 3289–3311, 2005c, <http://www.atmos-chem-phys.net/5/3289/2005/>.
- 20 Zhang, Q., Jimenez, J. L., Canagaratna, M. R., Allan, J. D., Coe, H., Ulbrich, I., Alfarra, M. R., Takami, A., Middlebrook, A. M., Sun, Y. L., Dzepina, K., Dunlea, E., Docherty, K., DeCarlo, P., Salcedo, D., Onasch, T. B., Jayne, J. T., Miyoshi, T., Shimojo, A., Hatakeyama, N., Takegawa, N., Kondo, Y., Schneider, J., Drewnick, F., Weimer, S., Demerjian, K. L., Williams, P. I., Bower, K. N., Bahreini, R., Cottrell, L., Griffin, R. J., Rautianen, J., and Worsnop, D. R.: Ubiquity and dominance of oxygenated species in organic aerosols in anthropogenically-influenced northern hemisphere mid-latitudes, *Geophys. Res. Lett.*, 34, L13801, doi:10.1029/2007GL029979, 2007a.
- 25 Zhang, Q., Jimenez, J. L., Worsnop, D. R., and Canagaratna, M.: A case study of urban particle acidity and its influence on secondary organic aerosol, *Environ. Sci. Technol.*, 41, 3213–3219, 2007b.



**Fig. 1.** Schematic of PMF factorization of an AMS dataset. The time series of the factors make up the matrix  $\mathbf{G}$  and the mass spectra of the factors make up the matrix  $\mathbf{F}$  in Eq. (1).

## Organic components from PMF of Q-AMS data

I. M. Ulbrich et al.

Title Page

Abstract

Introduction

Conclusions

References

Tables

Figures

◀

▶

◀

▶

Back

Close

Full Screen / Esc

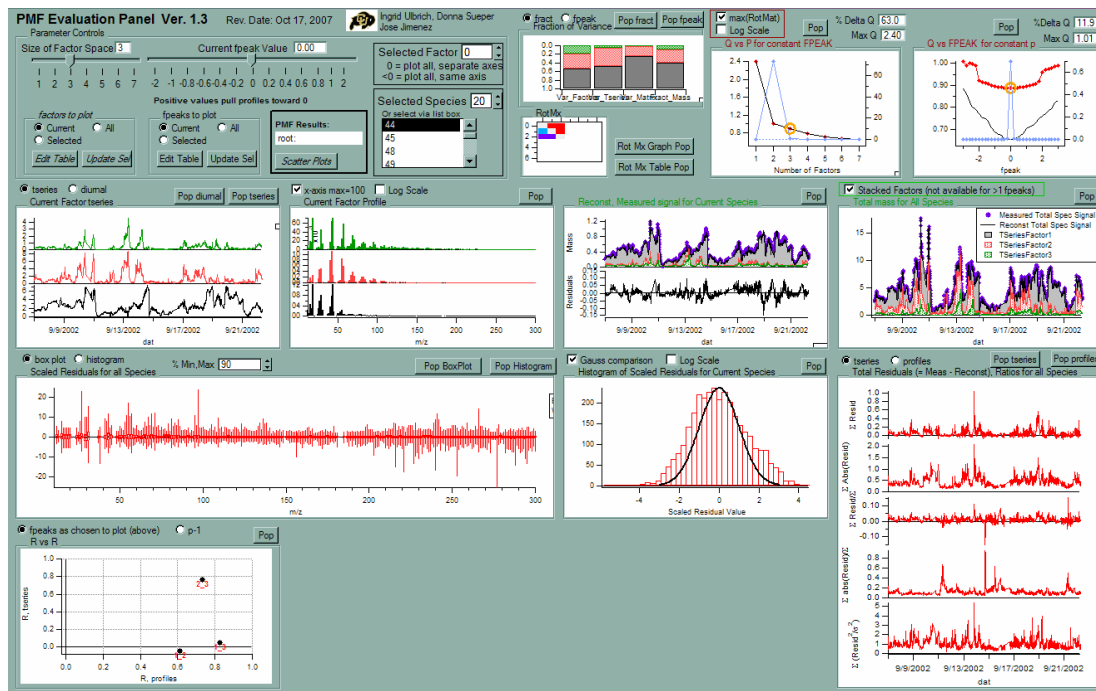
Printer-friendly Version

Interactive Discussion



## Organic components from PMF of Q-AMS data

I. M. Ulbrich et al.



**Fig. 2.** Screenshot of PMF Evaluation Panel developed for general examination of PMF solutions.

Title Page

Abstract

Introduction

Conclusions

References

Tables

Figures

◀

▶

◀

▶

Back

Close

Full Screen / Esc

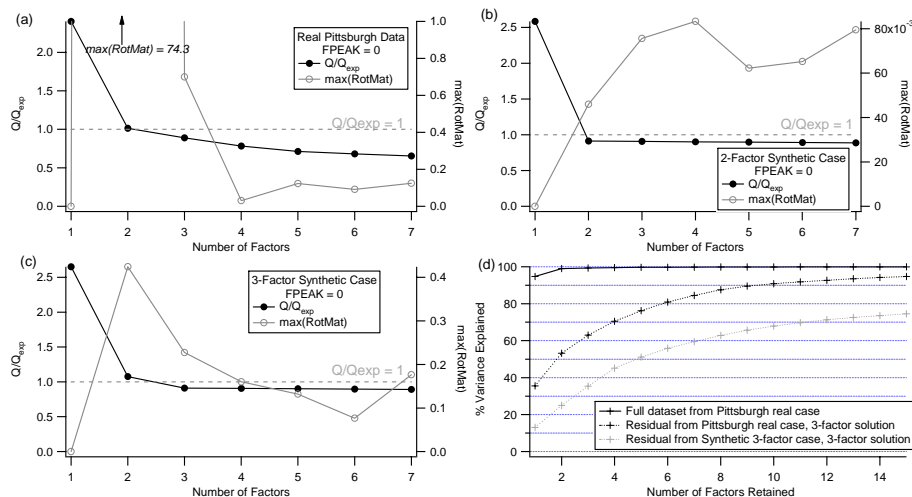
Printer-friendly Version

Interactive Discussion



Organic components  
from PMF of Q-AMS  
data

I. M. Ulbrich et al.



**Fig. 3.** Values of the normalized residual  $Q/Q_{exp}$  and maximum value of RotMat for (a) the real Pittsburgh case, (b) the two-factor synthetic case, and (c) the three-factor synthetic case. (d) Percent variance explained by factors from SVD analysis of the Pittsburgh real data matrix and the residual matrices from the Pittsburgh real case solution with 3 factors and the synthetic 3-factor base case solution with 3 factors.

Title Page

Abstract

Introduction

Conclusions

References

Tables

Figures

◀

▶

◀

▶

Back

Close

Full Screen / Esc

Printer-friendly Version

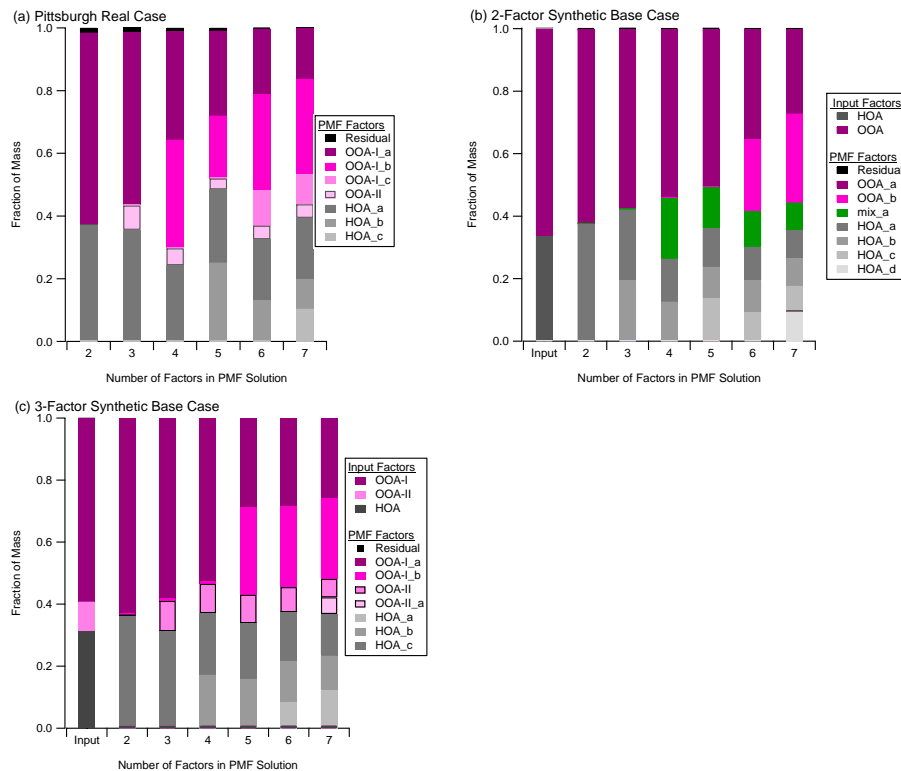
Interactive Discussion





Organic components  
from PMF of Q-AMS  
data

I. M. Ulbrich et al.



**Fig. 4.** Mass fraction of each factor in solutions from 2 to 7 factors for **(a)** the real Pittsburgh case, **(b)** the two-component synthetic dataset, and **(c)** the three-component synthetic dataset.

Title Page

Abstract

Introduction

Conclusions

References

Tables

Figures

◀

▶

◀

▶

Back

Close

Full Screen / Esc

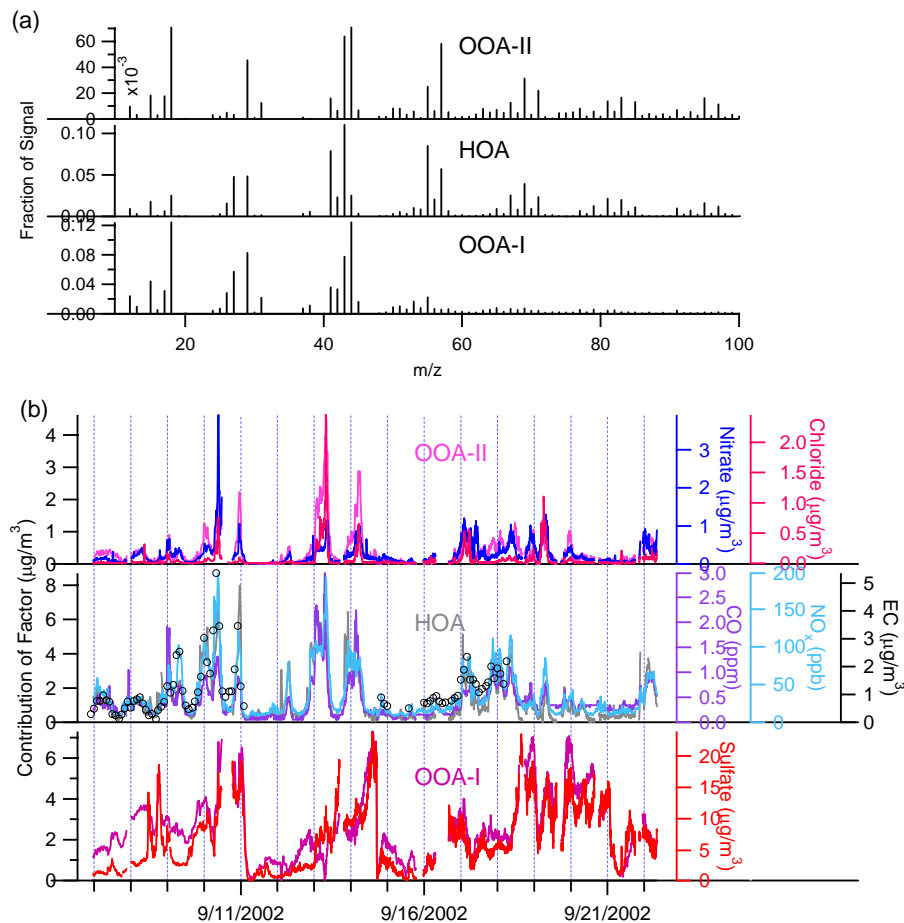
Printer-friendly Version

Interactive Discussion



Organic components  
from PMF of Q-AMS  
data

I. M. Ulbrich et al.

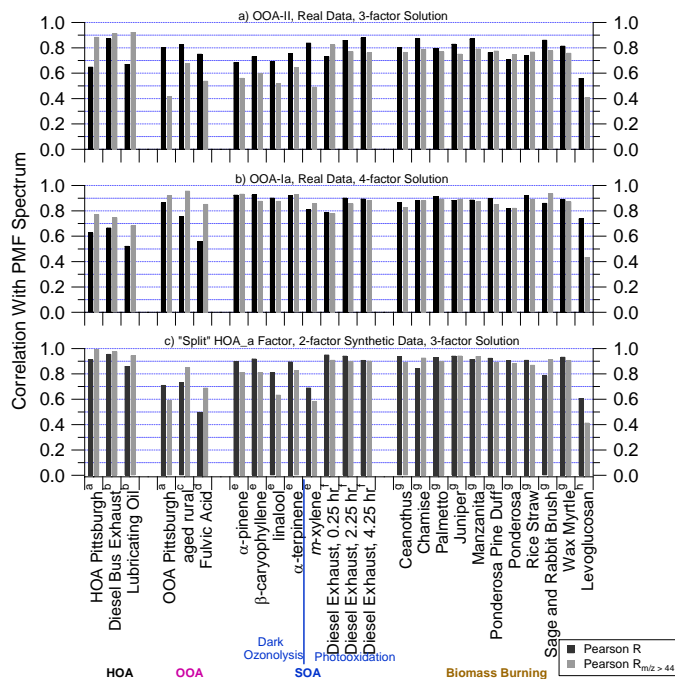


**Fig. 5.** Factors from the three-component PMF solution of the real Pittsburgh dataset for FPEAK=0. **(a)** Mass spectra of the three components. **(b)** Time series of the three components and tracers.

[Title Page](#)[Abstract](#)[Introduction](#)[Conclusions](#)[References](#)[Tables](#)[Figures](#)[◀](#)[▶](#)[◀](#)[▶](#)[Back](#)[Close](#)[Full Screen / Esc](#)[Printer-friendly Version](#)[Interactive Discussion](#)

Organic components  
from PMF of Q-AMS  
data

I. M. Ulbrich et al.



**Fig. 6.** Pearson R between representative spectra from the AMS Mass Spectral Database (<http://cires.colorado.edu/jimenez-group/AMSsd>) and **(a)** the third factor mass spectrum from the 3-factor PMF solution of the real Pittsburgh dataset, **(b)** the fourth factor mass spectrum from the 4-factor PMF solution of the real Pittsburgh dataset, and **(c)** the “split” factor mass spectrum from the 3-factor PMF solution of 2-factor base case. Values are given in Table S2. Superscripts denote the source of the reference spectra as follows: (a) Zhang et al. (2005a), (b) Canagaratna et al. (2004), (c) Alfara et al. (2004), (d) Alfara (2004), (e) Bahreini et al. (2005), (f) Sage et al. (2008), (g) I. M. Ulbrich, J. Kroll, J. A. Huffman, T. Onash, A. Trimborn, J. L. Jimenez, unpublished spectra, FLAME-I, Missoula, MT, 2006, (h) Schneider et al. (2006).

Title Page

Abstract

Introduction

Conclusions

References

Tables

Figures

◀

▶

◀

▶

Back

Close

Full Screen / Esc

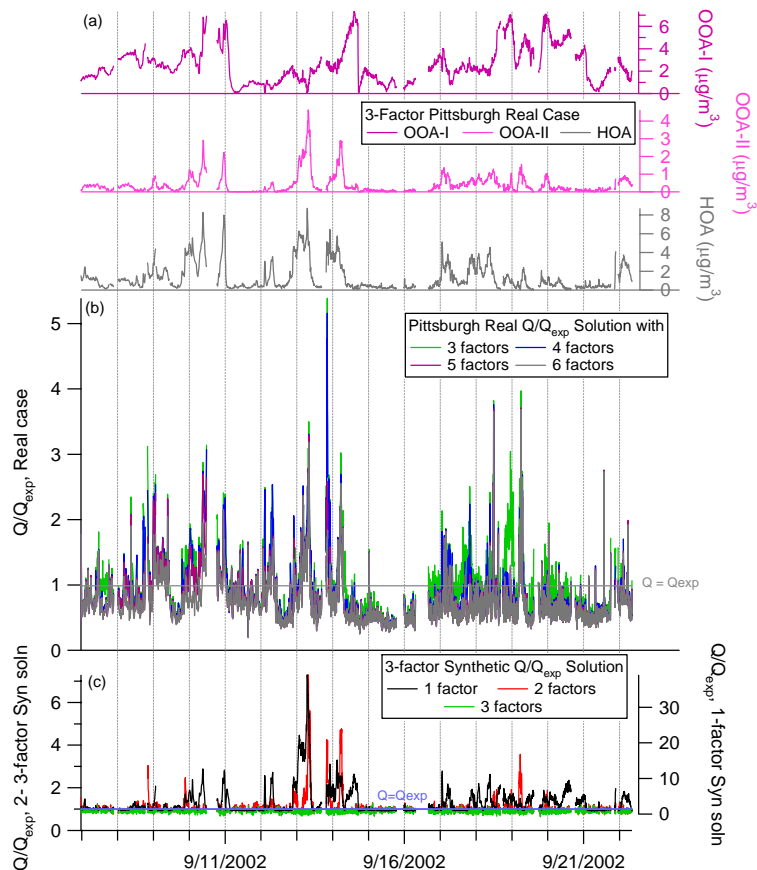
Printer-friendly Version

Interactive Discussion



Organic components  
from PMF of Q-AMS  
data

I. M. Ulbrich et al.



**Fig. 7.** (a) OOA-I, OOA-II, and HOA time series from the 3-factor solution of the real Pittsburgh dataset. (b)  $Q/Q_{\text{exp}}$ -contribution of each sample from the 3- to 6-factor solutions of the real Pittsburgh dataset. (c)  $Q/Q_{\text{exp}}$ -contribution of each sample for the 1- to 3-factor solutions of the synthetic 3-factor base case.

Title Page

Abstract

Introduction

Conclusions

References

Tables

Figures

◀

▶

◀

▶

Back

Close

Full Screen / Esc

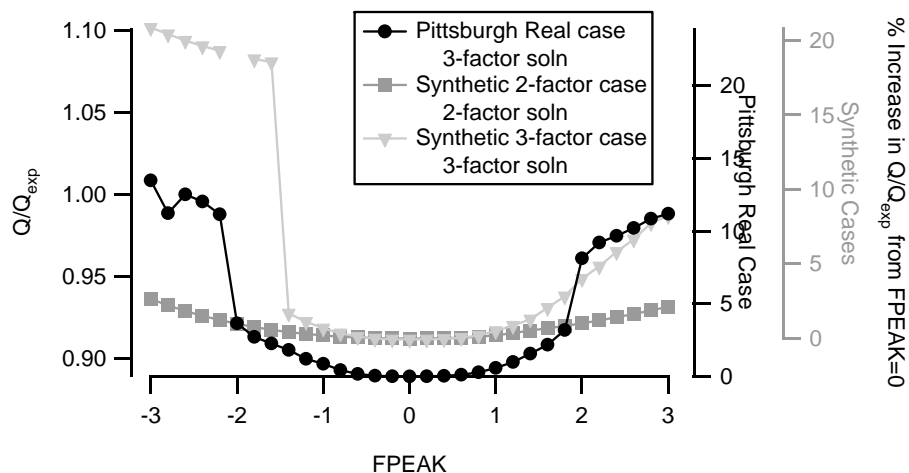
Printer-friendly Version

Interactive Discussion



Organic components  
from PMF of Q-AMS  
data

I. M. Ulbrich et al.

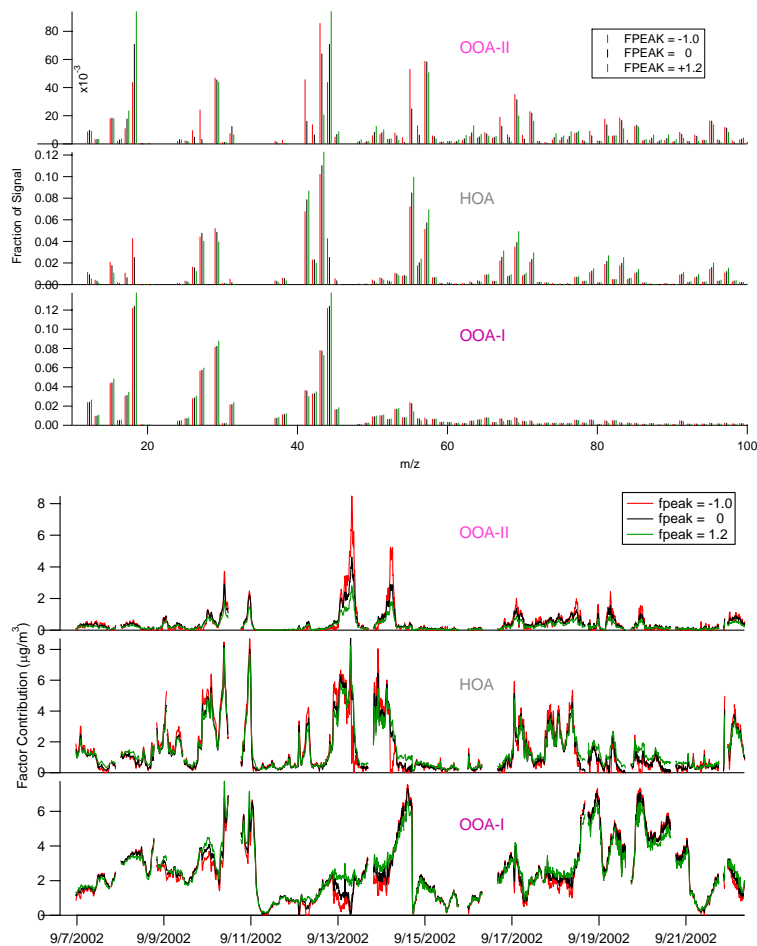


**Fig. 8.**  $Q/Q_{\text{exp}}$  vs. FPEAK for the real Pittsburgh case with 3 factors, the 2-factor synthetic base case with 2 factors, and the 3-factor synthetic base case with 3 factors.

[Title Page](#)[Abstract](#)[Introduction](#)[Conclusions](#)[References](#)[Tables](#)[Figures](#)[◀](#)[▶](#)[◀](#)[▶](#)[Back](#)[Close](#)[Full Screen / Esc](#)[Printer-friendly Version](#)[Interactive Discussion](#)

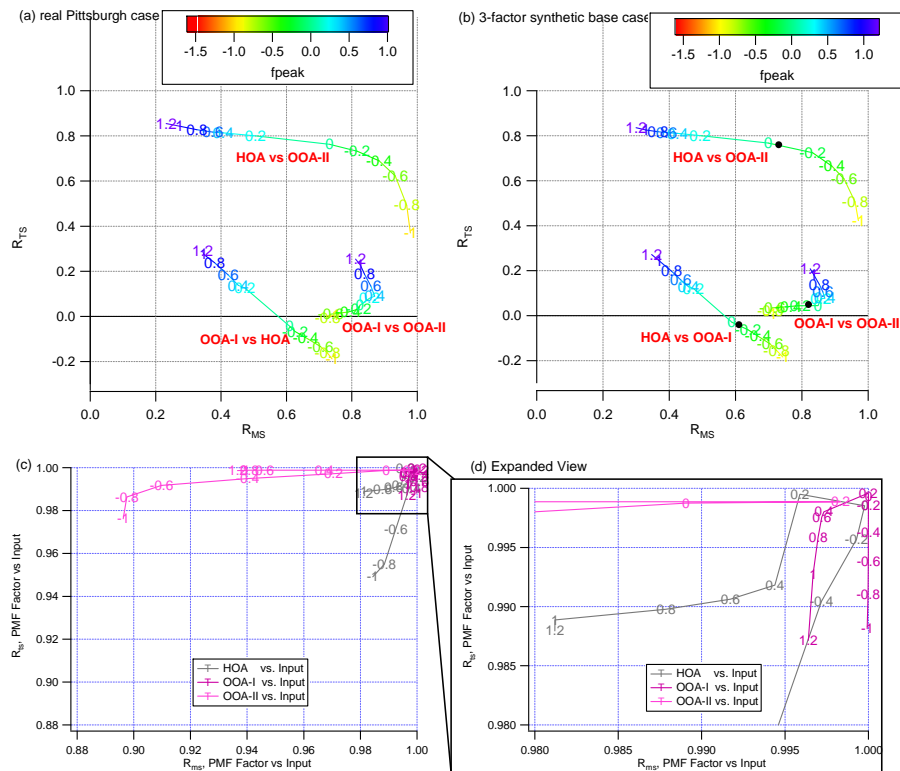
**Organic components  
from PMF of Q-AMS  
data**

I. M. Ulbrich et al.

**Fig. 9.** 3-factor solutions of the real Pittsburgh case for selected FPEAK values.[Title Page](#)[Abstract](#)[Introduction](#)[Conclusions](#)[References](#)[Tables](#)[Figures](#)[◀](#)[▶](#)[◀](#)[▶](#)[Back](#)[Close](#)[Full Screen / Esc](#)[Printer-friendly Version](#)[Interactive Discussion](#)

Organic components  
from PMF of Q-AMS  
data

I. M. Ulbrich et al.



**Fig. 10.** Correlations for PMF factors to each other as they change with FPEAK for **(a)** the real Pittsburgh case and **(b)** the three-factor synthetic base case. The red labels denote the correlations of the input factors. Traces are colored by FPEAK and numbers denote the FPEAK of each solution. Black dots in **(b)** indicate the correlation of the factors in the input. **(c)** Correlation of the PMF factors to the input factors for the three-factor synthetic case. **(d)** Expansion of **(c)**.

Title Page

Abstract

Introduction

Conclusions

References

Tables

Figures

◀

▶

◀

▶

Back

Close

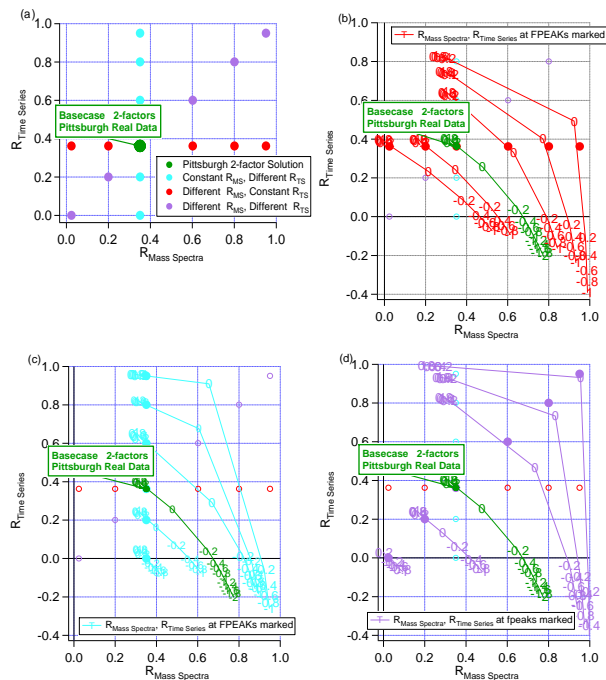
Full Screen / Esc

Printer-friendly Version

Interactive Discussion







**Fig. 11.** Correlation of PMF factors in mass spectrum ( $R_{MS}$ ) and time series ( $R_{TS}$ ). Dots denote the correlation between the factors in an input case. Colored lines connect solutions of different FPEAKS for the same input case. Markers denote the FPEAK value of each solution. The FPEAK values displayed represent a change in  $Q$  of 0.2% to 0.6% from the FPEAK=0 solution for each input case. **(a)** Correlations between the factors for each input case. **(b)** Cases that use the original time series but have varying correlations for the mass spectra. **(c)** Cases that use the original mass spectra but have varying correlations for the time series. **(d)** Cases that have varying correlations for both time series and mass spectra.

Title Page

Abstract

Introduction

Conclusions

References

Tables

Figures



Back

Close

Full Screen / Esc

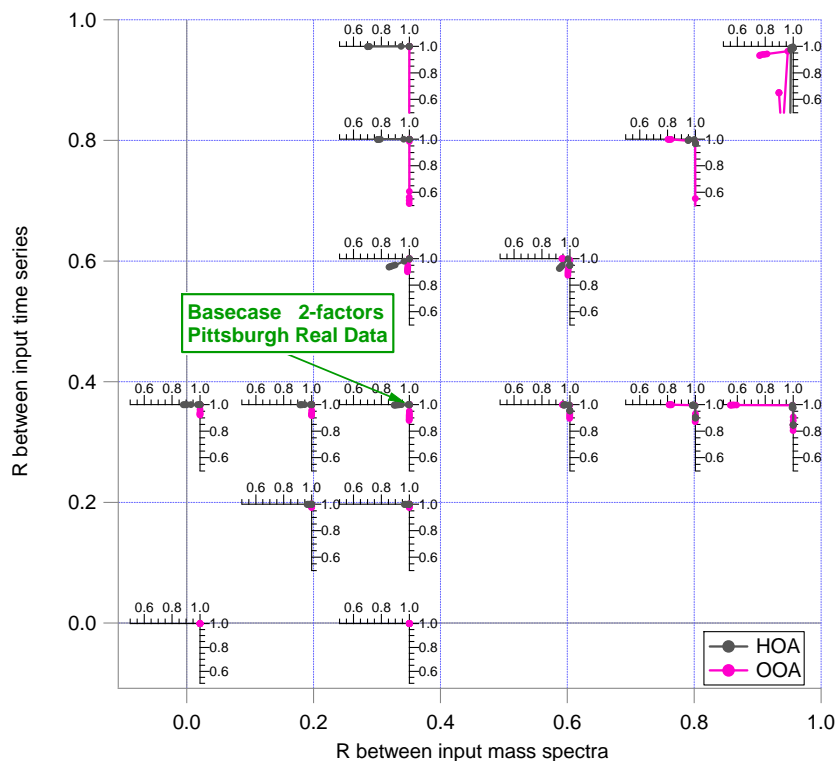
Printer-friendly Version

Interactive Discussion



**Organic components  
from PMF of Q-AMS  
data**

I. M. Ulbrich et al.

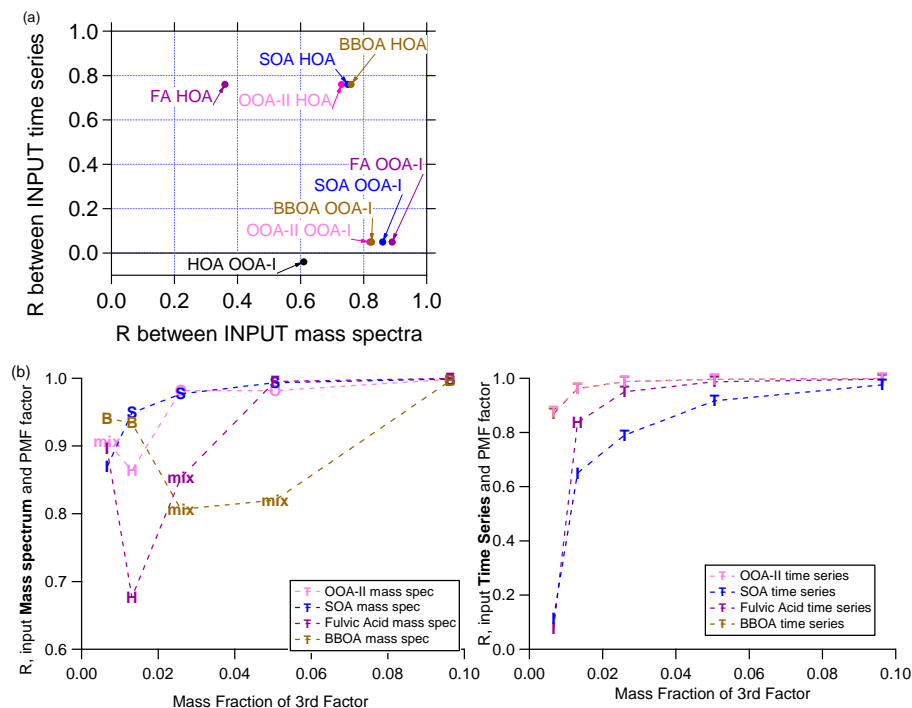


**Fig. 12.** Retrieval of input factors for 2-factor synthetic cases. Each set of internal axes corresponds to an input case and shows the correlation between the time series (vertical axes) and mass spectra (horizontal axes) of input factors and the PMF output factors. The outer axes reflect the relationship between the factors within each input case (same axes as Fig. 11) as FPEAK is varied in each case. The internal axes are placed so that their intersection (1,1) is approximately at the point of correlation of the input case (the dots in Fig. 11a). Correlations for HOA factors are shown in grey; correlations for OOA factors are shown in pink.

[Title Page](#)[Abstract](#)[Introduction](#)[Conclusions](#)[References](#)[Tables](#)[Figures](#)[◀](#)[▶](#)[◀](#)[▶](#)[Back](#)[Close](#)[Full Screen / Esc](#)[Printer-friendly Version](#)[Interactive Discussion](#)

Organic components  
from PMF of Q-AMS  
data

I. M. Ulbrich et al.



**Fig. 13. (a)** Correlations between 3-factor real output and all synthetic input cases. **(b)** Retrieval correlations between PMF and input TS and MS versus mass fraction of different third factors in synthetic cases. Markers denote the resemblance of the factors to the input MS or TS. For the MS, O, S, F, and B refer to OOA-II, SOA, FA, and BBOA, respectively. Mix means that the MS is a mix of the small factor, HOA, and OOA-I MS. For the TS, T refers to the input TS. For both cases, H and I refer to HOA and OOA-I, respectively.

Title Page

Abstract

Introduction

Conclusions

References

Tables

Figures

◀

▶

◀

▶

Back

Close

Full Screen / Esc

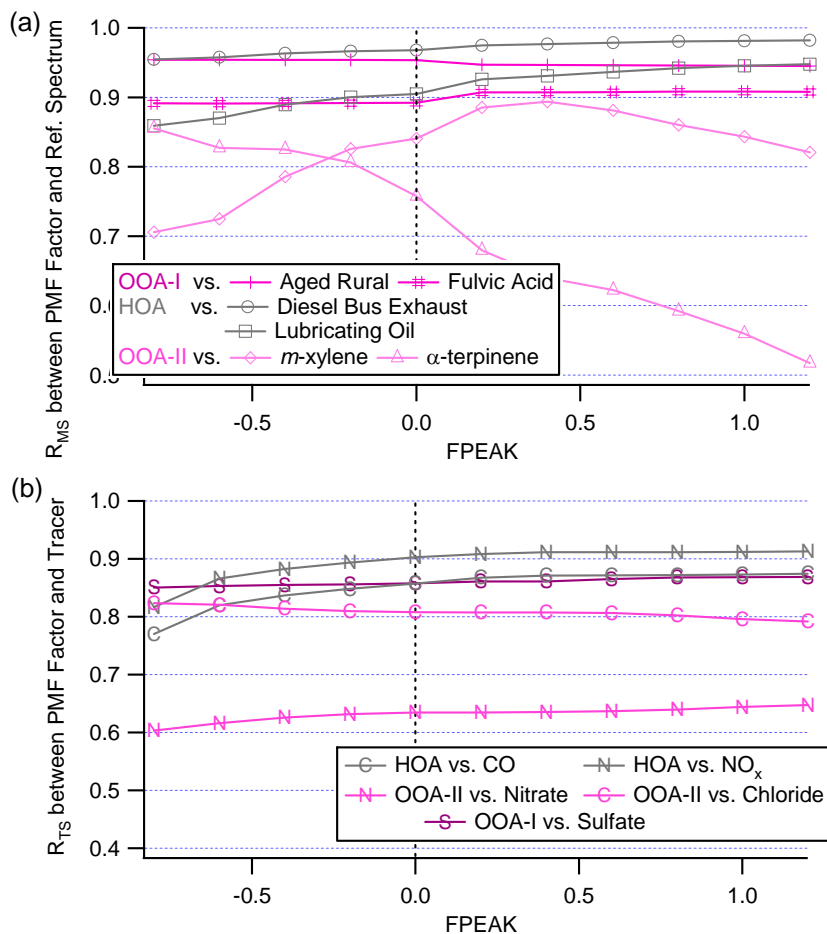
Printer-friendly Version

Interactive Discussion



Organic components  
from PMF of Q-AMS  
data

I. M. Ulbrich et al.



**Fig. 14.** Correlation versus FPEAK between PMF factor (a) MS and selected reference MS, and (b) TS and tracer TS.

Title Page

Abstract

Introduction

Conclusions

References

Tables

Figures

◀

▶

◀

▶

Back

Close

Full Screen / Esc

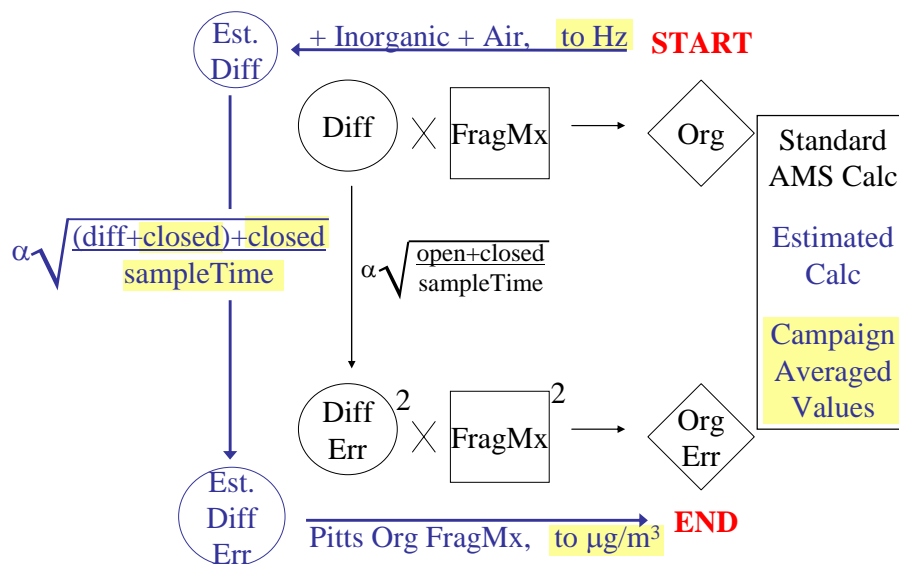
Printer-friendly Version

Interactive Discussion



Organic components  
from PMF of Q-AMS  
data

I. M. Ulbrich et al.



**Fig. A1.** Schematic diagram for calculation of error matrices for real (black path) and synthetic (blue path) AMS data.

Title Page

Abstract

Introduction

Conclusions

References

Tables

Figures

◀

▶

◀

▶

Back

Close

Full Screen / Esc

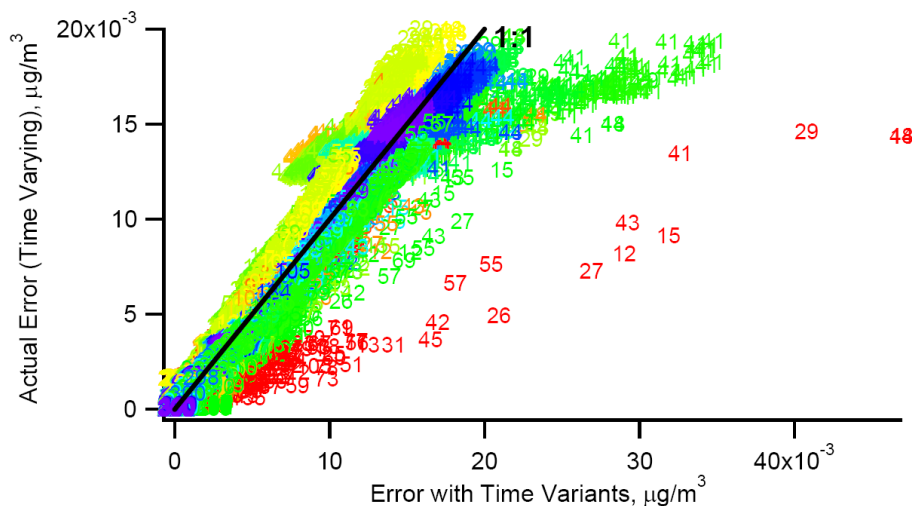
Printer-friendly Version

Interactive Discussion



**Organic components  
from PMF of Q-AMS  
data**

I. M. Ulbrich et al.



**Fig. A2.** Comparison of errors calculated for the Pittsburgh dataset (y-axis) and the synthetic two-factor dataset (x-axis). Markers are labeled by their  $m/z$  and colored by time during the campaign (beginning is red, end is blue). The black line is a 1:1 line.

[Title Page](#)[Abstract](#)[Introduction](#)[Conclusions](#)[References](#)[Tables](#)[Figures](#)[◀](#)[▶](#)[◀](#)[▶](#)[Back](#)[Close](#)[Full Screen / Esc](#)[Printer-friendly Version](#)[Interactive Discussion](#)