

Global peroxyacetyl nitrate (PAN) retrieval in the upper troposphere from limb emission spectra of the Michelson Interferometer for Passive Atmospheric Sounding (MIPAS)

N. Glatthor¹, T. von Clarmann¹, H. Fischer¹, B. Funke², U. Grabowski¹,
M. Höpfner¹, S. Kellmann¹, A. Linden¹, M. Milz¹, T. Steck¹, and G. P. Stiller¹

¹Forschungszentrum Karlsruhe, Institut für Meteorologie und Klimaforschung, Karlsruhe,
Germany

²Instituto de Astrofísica de Andalucía (CSIC), Granada, Spain

Received: 6 December 2006 – Accepted: 19 January 2007 – Published: 29 January 2007

Correspondence to: N. Glatthor (norbert.glatthor@imk.fzk.de)

Title Page

Abstract

Introduction

Conclusions

References

Tables

Figures

◀

▶

◀

▶

Back

Close

Full Screen / Esc

Printer-friendly Version

Interactive Discussion

EGU

Abstract

We use limb emission spectra of the Michelson Interferometer for Passive Atmospheric Sounding (MIPAS) onboard the ENVironmental SATellite (ENVISAT) to derive the first global distribution of peroxyacetyl nitrate (PAN) in the upper troposphere. PAN is generated in tropospheric air masses polluted by fuel combustion or biomass burning and acts as a reservoir and carrier of NO_x in the cold free troposphere. Since PAN exhibits continuum-like broadband structures in the mid-infrared region, we have applied a contiguous analysis window covering the wavenumber region $775\text{--}800\text{ cm}^{-1}$ for retrieval. The interfering species CCl_4 , HCFC-22, H_2O , ClONO_2 , CH_3CCl_3 and C_2H_2 were fitted along with PAN, whereas pre-fitted profiles were used to model the contribution of other contaminants like ozone. Sensitivity tests consisting in retrieval without consideration of PAN have demonstrated the existence of PAN signatures in MIPAS spectra obtained from polluted air masses. The analysed dataset consists of 10 days between 4 October and 1 December 2003. This period covers the end of the biomass burning season in South America and South and East Africa, in which generally large amounts of pollutants are produced and distributed over wide areas in the southern hemispheric free troposphere. Elevated PAN amounts of 200–700 pptv were measured in a large plume extending from Brasil over the Southern Atlantic, Central and South Africa, the South Indian Ocean as far as Australia at altitudes between 8 and 16 km. Enhanced PAN values were also found in a much more restricted area between northern subtropical Africa and India. The most significant northern midlatitude PAN signal in MIPAS data is an area extending at 8 km altitude from China into the Chinese Sea. The average mid and high latitude PAN amounts found at 8 km were around 125 pptv in the northern, but only between 75 and 50 pptv in the southern hemisphere. The PAN distribution found in the southern hemispheric tropics and subtropics is highly correlated with the jointly fitted acetylene (C_2H_2), which is another pollutant produced by biomass burning, and agrees reasonably well with the CO plume detected during end of September 2003 at the 275 hPa level (~ 10 km) by the Measurement of Pollution in the

ACPD

7, 1391–1420, 2007

Global PAN retrieval from MIPAS spectra

N. Glatthor et al.

Title Page

Abstract

Introduction

Conclusions

References

Tables

Figures

◀

▶

◀

▶

Back

Close

Full Screen / Esc

Printer-friendly Version

Interactive Discussion

EGU

Troposphere (MOPITT) instrument on the Terra satellite. Similar southern hemispheric PAN amounts were also observed by previous airborne measurements performed in September/October 1992 and 1996 above the South Atlantic and the South Pacific, respectively.

1 Introduction

Peroxyacetyl nitrate (PAN) is generated in air masses polluted by fuel emissions or by biomass burning and is a possible indicator of photochemical smog. Its production is initialized by the reaction of hydrocarbons with the hydroxyl radical (OH) and subsequently with O₂ to form the peroxyacetyl radical CH₃C(O)OO as specific intermediate. The reversible reaction of the peroxyacetyl radical with nitrogen dioxide produces PAN



PAN was first detected in the Los Angeles area during smog episodes (Stephens et al., 1956). Phytotoxic episodes with PAN amounts of more than 15 ppbv were observed in Southern California in the 1980s (Temple et al., 1983). Even higher amounts of more than 30 ppbv were measured in 1997 in Mexico City (Gaffney et al., 1999). Since the 1980s PAN production has decreased in North America and Europe, but increased in Eastern Asia. The PAN amounts in clean air areas are generally substantially lower, namely between 50 and 100 pptv (Singh et al., 2000a). Widespread southern hemispheric PAN pollution extending from South America over the South Atlantic, East and South Africa, the Southern Indian Ocean as far as Australia has been observed during the annual biomass burning period in South America and South Africa in September and October (Singh et al., 2000a).

The thermal decomposition rate of PAN is highly temperature dependent, ranging from 1 h at 298 K to about 5 months at 250 K (Singh, 1987). However, due to photolysis its mean lifetime is restricted to 3 months. Because of its temperature sensitivity PAN can only be transported over a few hundred kilometres in the lower troposphere,

Global PAN retrieval from MIPAS spectra

N. Glatthor et al.

Title Page

Abstract

Introduction

Conclusions

References

Tables

Figures

◀

▶

◀

▶

Back

Close

Full Screen / Esc

Printer-friendly Version

Interactive Discussion

**Global PAN retrieval
from MIPAS spectra**

N. Glatthor et al.

Title Page

Abstract

Introduction

Conclusions

References

Tables

Figures

◀

▶

◀

▶

Back

Close

Full Screen / Esc

Printer-friendly Version

Interactive Discussion

but over distances of more than 10 000 km in the cold upper troposphere. Thus it serves as a reservoir and carrier of NO_x in this height region. When these polluted air masses warm up, PAN is destroyed and NO_2 is released (Eq. 1), which is photolysed at wavelengths less than 420 nm. This leads to formation of nitric oxide (NO) and atomic oxygen:



Subsequently, atomic oxygen reacts with O_2 and produces tropospheric ozone:



Thus, PAN can contribute to the pollution of remote clean air areas, but has also strong influence on the oxidising power of the atmosphere. After photolytic destruction during daytime re-formation of PAN at night is possible. The fact, that it has no important natural sources in the stratosphere, is an advantage of PAN compared to ozone as indicator of hydrocarbon- NO_x photochemistry.

Up to now there exists no global dataset of upper-tropospheric PAN. Only a few airborne campaigns covering supra-regional areas have been performed in the free troposphere, e.g. the Global Tropospheric Experiment/Transport and Atmospheric Chemistry Near the Equator-Atlantic (GTE/TRACE A) experiment above the Tropical and South Atlantic (Singh et al., 1996) and the Pacific Exploratory Mission (PEM) Tropics-A campaign above the Pacific (Singh et al., 2000a). These missions were dedicated to study the extent and composition of the southern hemispheric biomass burning plume during September/October 1992 and 1996, respectively. Another airborne campaign off the west coast of North America, the Intercontinental Transport and Chemical Transformation 2002 (ITCT 2K2) project, was carried out to investigate the intercontinental PAN transport from East Asia (Roberts et al., 2004). Most of the other PAN data available are groundbased measurements in the boundary layer in highly polluted as well as very remote regions (Temple et al., 1983, Beine et al., 2000, Gaffney et al., 1999, Jacobi et al., 1999). Whereas all these airborne and groundbased measurements employed in-situ techniques, only quite recently the first detection of upper-tropospheric

PAN in infra-red remote sensing spectra was reported (Remedios et al., 2006). The analysed dataset was obtained with the balloon-borne MIPAS instrument (MIPAS-B2) (Fischer and Oelhaf, 1996; Friedl-Vallon et al., 2004).

In this paper we present the first global distribution of PAN derived from spaceborne mid infra-red emission spectra. In detail, we will describe the retrieval method, give an error estimation, discuss sensitivity tests, and present the global PAN distribution observed between 4 October and 1 December 2003. This period covers the end of the biomass burning season in South America, Central and South Africa and in Australia. Thus, a widespread distribution of elevated PAN amounts and of other pollutants was expected in the southern hemispheric tropical and subtropical upper troposphere. While this paper is focused on the description of the PAN retrieval scheme and on the presentation of the retrieved PAN distribution, a more detailed investigation of the biomass burning plume by combined analysis of several pollutants and by trajectory calculations will be presented in a subsequent paper.

2 Michelson Interferometer for Passive Atmospheric Sounding

The Michelson Interferometer for Passive Atmospheric Sounding (MIPAS) was launched onboard the Sun-synchronous polar-orbiting European ENVironmental SATellite (ENVISAT) on 1 March 2002. It is a limb-viewing Fourier transform infrared (FTIR) emission spectrometer covering the mid-infrared spectral region from 685 to 2410 cm^{-1} . Its wide spectral coverage and high spectral resolution, which is 0.035 cm^{-1} (unapodised) for spectra of the original nominal measurement mode evaluated here, enables simultaneous observation of numerous trace gases (Fischer and Oelhaf, 1996; European Space Agency (ESA), 2000). This measurement mode consists of rearward limb-scans covering tangent altitudes between about 6 and 68 km within 17 altitude steps. The step-width is 3 km up to 42 km and increases up to 8 km above 52 km. The level-1B radiance spectra used for PAN retrieval are data versions 4.61–4.62 provided by the European Space Agency (ESA) (Nett et al., 2002). Several

Global PAN retrieval from MIPAS spectra

N. Glatthor et al.

Title Page

Abstract

Introduction

Conclusions

References

Tables

Figures

◀

▶

◀

▶

Back

Close

Full Screen / Esc

Printer-friendly Version

Interactive Discussion

data processors have been developed for near-real time and off-line retrieval of profiles of atmospheric trace species from level-1B MIPAS spectra (von Clarmann et al., 2003a). The PAN distribution presented in this paper was produced with the retrieval processor of the Institut für Meteorologie und Klimaforschung (IMK), which was developed to produce consistent datasets containing considerably more trace species than included in the operational dataset provided under ESA responsibility.

3 Retrieval method and error estimation

The retrievals performed with the IMK data processor consist of inversion of MIPAS level-1B spectra to vertical profiles of atmospheric state parameters by constrained non-linear least squares fitting (e.g., Rodgers, 2000, and references therein) in a global-fit approach:

$$\mathbf{x}_{i+1} = \mathbf{x}_i + (\mathbf{K}^T \mathbf{S}_y^{-1} \mathbf{K} + \mathbf{R} + \lambda \mathbf{I})^{-1} \times (\mathbf{K}^T \mathbf{S}_y^{-1} (\mathbf{y}_{\text{meas}} - \mathbf{y}(\mathbf{x}_i)) - \mathbf{R}(\mathbf{x}_i - \mathbf{x}_a)), \quad (4)$$

where \mathbf{x}_{i+1} is the vector of the unknown state parameters calculated in iteration $i+1$, \mathbf{y}_{meas} is the measurement vector, and $\mathbf{y}(\mathbf{x}_i)$ is the result of the radiative transfer model using the parameters \mathbf{x}_i of iteration number i . \mathbf{S}_y is the measurement noise covariance matrix, \mathbf{K} is the Jacobian matrix containing the partial derivatives $\partial \mathbf{y}(\mathbf{x}_i) / \partial \mathbf{x}_i$, \mathbf{R} is a regularization matrix, $\lambda \mathbf{I}$ (scalar times unity matrix) is a damping term as proposed by Levenberg (1944) and Marquardt (1963), and \mathbf{x}_a is an a-priori profile used to constrain the retrieval result. To avoid any influence on the shape of the retrieved PAN profiles, an all-zero a-priori profile is chosen, whereas a climatological PAN profile is used as first-guess. Application of a smoothing constraint is necessary to attenuate instabilities, because the retrieval grid used has an altitude spacing of 1 km up to 44 km and of 2 km between 44 and 70 km, which means oversampling compared to the height distance between the tangent altitudes. Similar as in other retrievals of MIPAS data performed at IMK, Tikhonov's regularization scheme is used with a first derivative operator as constraint (Steck, 2002, and references therein).

Title Page

Abstract

Introduction

Conclusions

References

Tables

Figures

◀

▶

◀

▶

Back

Close

Full Screen / Esc

Printer-friendly Version

Interactive Discussion

**Global PAN retrieval
from MIPAS spectra**

N. Glatthor et al.

Title Page

Abstract

Introduction

Conclusions

References

Tables

Figures

◀

▶

◀

▶

Back

Close

Full Screen / Esc

Printer-friendly Version

Interactive Discussion

Radiative transfer calculations are performed with the Karlsruhe Optimized and Precise Radiative Algorithm (KOPRA) (Stiller, 2000). Prior to PAN many other trace species are evaluated in the retrieval chain. First, spectral shift, the temperature profile and the tangent heights are fitted. Thereafter various trace gas profiles are retrieved in a successive manner, in which the major species H_2O , O_3 , CH_4 , N_2O , and HNO_3 are analysed first. The fitted profiles of all these species are used to model their radiative contribution in the PAN retrieval unless they are joint-fitted again. Beside each target species, microwindow-dependent continuum radiation profiles and microwindow-dependent, but height-independent zero level calibration corrections are jointly fitted. The retrieval strategy is described in more detail in, e.g., von Clarmann et al. (2003b), Glatthor et al. (2004) and Höpfner et al. (2004) and references therein.

Since PAN is a relatively heavy and complex molecule (141 atomic mass units), the line positions are very dense and the line wings of its single rotational-vibrational transition lines overlap, which leads to broadband continuum-like signatures. For this reason spectroscopic data are available as tabulated absorption cross sections only. In our retrievals PAN is modelled using a cross section dataset provided by the University of Leicester, which consists of measurements at three temperatures, 250, 273 and 295 K, with a nominal unapodised spectral resolution of 0.25 cm^{-1} (Allen et al., 2005a, b). Based on model calculations for a climatological tropical atmosphere, the most prominent atmospheric PAN band is that centred at 794 cm^{-1} (the ν_{16} NO_2 stretch), followed by a second, already considerably weaker band at 1163 cm^{-1} (the ν_{10} C-O stretch). Figure 1 shows the difference spectrum for a tangent altitude of 10 km between an atmosphere containing a PAN amount of ~ 200 pptv (at 10 km) and a PAN-free atmosphere. Comparison with the noise-equivalent spectral radiance (NESR) of MIPAS indicates that for this PAN amount a signal-to-noise ratio of larger than 10 can be obtained in the band at 794 cm^{-1} . After test of different sizes of the analysis window, PAN retrievals were finally performed in the wavenumber region $775\text{--}800\text{ cm}^{-1}$, which covers the strongest signatures of the band at 794 cm^{-1} . Due to the large amount of MIPAS data to be analysed, the weaker part of this band between 800 and 830 cm^{-1}

as well as the band at 1163 cm^{-1} were not used for retrieval to save computation time, except for some sample consistency tests. For correct modelling of the CO_2 Q-branch at 792 cm^{-1} radiative transfer calculations were performed with inclusion of CO_2 line-mixing. Because of its relatively weak signal and broadband structure, PAN requires a careful retrieval to separate its signature from the atmospheric continuum and from other broadband species, namely CCl_4 , HCFC-22, ClONO_2 and CH_3CCl_3 , which also contribute to the atmospheric signal in this spectral interval. Thus, beside PAN these species as well as H_2O and C_2H_2 , a continuum profile and a height-independent offset were also fitted. The results of preceding retrievals were used to model the temperature profile and the contribution of other interfering species like ozone, because test calculations had demonstrated that joint-fit of these species had only little influence on the retrieved PAN profile.

Figure 2 shows a PAN vmr profile obtained on 21 October, 2003, over Eastern Africa (top left) and another profile from the same orbit obtained above northern midlatitudes (top right). Over East Africa PAN amounts as high as 700 pptv were detected at the lowermost height usable for retrieval at this geolocation (11 km, due to clouds). Towards higher altitudes PAN decreases to 100 pptv at the tropopause (17 km) and to 50 pptv at 20 km. The midlatitude profile exhibits ~ 175 pptv of PAN in the troposphere, a rapid decrease at the tropopause and also values around 50 pptv in the lowermost stratosphere. The corresponding averaging kernels (middle panels) indicate, that at the tropical geolocation a PAN signal is obtainable between 11 and 23 km and at the midlatitude geolocation between 5 and 23 km. The calculated number of degrees of freedom is 2.4 and 4.6, respectively, and the height resolution is 3.5–6 km (degrading with altitude). The averaging kernels show that the PAN amounts retrieved in the lowermost stratosphere have a certain tropospheric contribution. Nevertheless, these PAN values are in good agreement with PAN amounts reported by Singh et al. (2000b) for the lower stratosphere above the Northern Atlantic (solid red squares).

The diagrams at the bottom of Fig. 2 show the total estimated PAN retrieval error, measurement noise and the major error components for both geolocations, whereas

**Global PAN retrieval
from MIPAS spectra**

N. Glatthor et al.

Title Page

Abstract

Introduction

Conclusions

References

Tables

Figures

◀

▶

◀

▶

Back

Close

Full Screen / Esc

Printer-friendly Version

Interactive Discussion

**Global PAN retrieval
from MIPAS spectra**

N. Glatthor et al.

[Title Page](#)[Abstract](#)[Introduction](#)[Conclusions](#)[References](#)[Tables](#)[Figures](#)[◀](#)[▶](#)[◀](#)[▶](#)[Back](#)[Close](#)[Full Screen / Esc](#)[Printer-friendly Version](#)[Interactive Discussion](#)

all error components are 1-sigma uncertainties. The error estimation is based on the actual retrieved temperatures, tangent heights, PAN profiles and simulated spectra and Jacobians of the final iteration (cf. Glatthor et al., 2004). For the tropical geolocation (left) the total error is 5% at the lowermost useable tangent height (13 km), increases to 40% at the tropopause (17 km) and remains above 30% at higher altitudes. Measurement noise increases from 3% at 13 km to more than 25 % at the tropopause. Except for 13 km, uncertain knowledge on the instrumental line-of-sight (LOS) is the dominant error contribution in the altitude range 10–17 km. Further important parameter errors in this altitude range are the uncertainties in spectroscopic data, instrumental line shape (ILS), temperature and, above 15 km, in the ozone vmr. The spectroscopic uncertainty is around 3% at most altitudes, which corresponds to the assumed 1-sigma error of the PAN cross sections at 250 K of 3.2% (cf. Allen et al., 2005a, b). Uncertain knowledge on ILS and temperature causes errors of up to 3 and 4%, respectively, in the altitude range 10–17 km. The error due to unknown knowledge on ozone, as calculated from the estimated standard deviation (ESD) of the pre-fitted ozone profile, is 7% at 17 km, but decreases rapidly towards lower altitudes. At the northern midlatitude geolocation (bottom right), where considerably lower PAN amounts were detected, the total error amounts to 14–20% around the tropopause (9 km). Towards lower altitudes the error increases strongly up to 75% at 5 km, whereas it increases up to 30% in the lower stratosphere. Measurement noise is between 5% at 8 km and 25% in the stratosphere. The main reason for the strong error increase at the lowermost altitudes is the uncertainty in LOS. Further major error components are the same as for the East African case.

An additional error source is the fact that the lowest laboratory temperature for which PAN cross sections have been determined is 250 K, whereas the upper tropospheric temperature often is considerably lower, e.g. 210 K at 13 km altitude at the East African geolocation. To estimate the possible bias resulting from this discrepancy, test retrievals were performed using the PAN cross section data sets for 273 K or 295 K only. Thereby the retrieved PAN amount at this geolocation, which due to the low tempera-

tures had been evaluated using the cross sections for 250 K in the standard retrieval, increased by 13% and 26% at 13 km altitude, respectively. Provided that this linear dependence on temperature maps to laboratory PAN cross sections actually required for colder upper tropospheric temperatures, this would mean that the retrieval overestimates the “true” PAN amount at 13 km at this geolocation by 30%. For a general estimation of this effect, average temperatures were calculated for the southern hemispheric area of high PAN amounts (cf. Sect. 5), which were 247, 236, 221, 209 and 199 K for the altitudes of 8, 10, 12, 14 and 16 km. Under the assumption of linearity this means that the retrieved PAN amounts at these altitudes would have to be reduced by 2, 8, 16, 23 and 29%, respectively.

Figure 3 shows the modelled spectrum and the retrieved signatures of PAN, CCl₄, HCFC-22, H₂O and C₂H₂ for the East African geolocation at the tangent altitude of 13 km (left) and a zoom on the retrieved signatures only at 19 km (right). At 13 km PAN exhibits a broadband signature of up to more than 200 nW/(cm² sr cm⁻¹). The broadband structures of CCl₄ and HCFC-22 are mainly interfering between 792 and 800 cm⁻¹ but only little at lower wavenumbers, which enables a clear separation of the PAN signal. To maintain clarity the weak signatures of the other joint-fit parameters ClONO₂ and CH₃CCl₃ are not shown. At 19 km the signature of PAN has decreased to 10 nW/(cm² sr cm⁻¹), which is a factor of 2 lower than the instrumental NESR and also lower than the contributions of CCl₄ and HCFC-22. In consistence with the analytical error estimation this shows that the retrieved stratospheric PAN amounts have a much larger uncertainty.

4 Sensitivity tests

To check the retrieved PAN amounts we investigated, if the measured MIPAS spectra can be modelled just as well by complete neglect of PAN. Figure 4 (left) shows the MIPAS spectrum from 13 km altitude obtained on 21 October 2003 on orbit 8585 at the above presented East African geolocation (12.9° S, 37.2° E), where a high PAN vmr of

Global PAN retrieval from MIPAS spectra

N. Glatthor et al.

Title Page

Abstract

Introduction

Conclusions

References

Tables

Figures

◀

▶

◀

▶

Back

Close

Full Screen / Esc

Printer-friendly Version

Interactive Discussion

**Global PAN retrieval
from MIPAS spectra**

N. Glatthor et al.

[Title Page](#)[Abstract](#)[Introduction](#)[Conclusions](#)[References](#)[Tables](#)[Figures](#)[◀](#)[▶](#)[◀](#)[▶](#)[Back](#)[Close](#)[Full Screen / Esc](#)[Printer-friendly Version](#)[Interactive Discussion](#)

600 pptv was retrieved. Further it contains fitted spectra and residuals resulting from retrieval with and without inclusion of PAN, i.e. assuming a PAN-free atmosphere in the latter case and retrieval of the joint-fit gases only. The residuals clearly show that the fit without consideration of PAN is much worse than the adjustment with modelling of PAN, confirming the large PAN amount retrieved at this altitude. This is also expressed by the RMS deviation between measured and modelled spectra, which is reduced from 41.2 nW/(cm² sr cm⁻¹) for the retrieval without PAN to 26.9 nW/(cm² sr cm⁻¹) for the retrieval with inclusion of PAN, i.e. by 35%. For comparison the result of the same test for 19 km altitude at the same geolocation, where a very low PAN amount of 50 pptv was retrieved, is also shown (Fig. 4, right). In this case the residuals are nearly equal (RMS of 16.82 and 16.76 nW/(cm² sr cm⁻¹)), indicating that retrieval without inclusion of PAN is technically almost just as good. However the comparably good fit for the PAN-free atmosphere is obtained with a slightly negative, i.e. unphysical, amount of CH₃CCl₃. This phenomenon becomes even much stronger at 13 km, where neglect of PAN leads to large negative CH₃CCl₃ and ClONO₂ amounts.

The result of this sensitivity test for the whole orbit 8585 is displayed in Fig. 5 in a compact form. Here the ratios of the RMS-values resulting from retrieval without and with inclusion of PAN are plotted against the retrieved PAN amounts. The colour code indicates the tangent height of the respective spectra. For most of the data points from altitudes of 15 km or higher the RMS-ratio is close to unity, indicating only weak PAN signatures at the most, which is consistent with the retrieved low PAN amounts of 0–60 pptv. These altitudes are at or above the tropopause, where indeed no large PAN amounts are expected. However there is a subset of datapoints, which show a linear correlation of the RMS-ratio with the retrieved PAN amounts, meaning an increasingly worse fit without consideration of PAN. For these data points, which are from altitudes between 7 and 13 km, the RMS-ratio increases up to more than 1.6 for fitted PAN amounts of 200–600 pptv.

Additional tests, consisting in correlation between the retrieved PAN and the jointly fitted CCl₄, HCFC-22 and CH₃CCl₃ amounts, showed no correlation or anticorrelation.

This ensured that the broadband signatures of these species were not erroneously interpreted as PAN.

5 Discussion

5.1 Observed PAN distribution

5 The analysed dataset consists of 150 orbits from 10 days between 4 October and 1 December, 2003, namely 4, 13, 21 and 26 October, 1, 4, 11, 21 and 24 November, and 1 December. This period covers the end of the biomass burning season in the southern hemisphere. Figure 6 exemplarily shows the global PAN distribution retrieved from single spectra for 21 October 2003 at 12 km altitude. The white areas, which are mainly
10 located in the tropics and subtropics, are data gaps caused by cloud contamination. Nevertheless a contiguous area of high PAN values (250–600 pptv) extending from the Southern Atlantic to East Africa is visible, which we attribute to extensive biomass burning. Interrupted by data gaps, this area seems to be continued above the Southern Indian Ocean as far as Australia. To enhance the spatial data coverage we show the
15 PAN distribution averaged over the whole period in the next two plots.

The zonal average of the whole dataset (Fig. 7) exhibits clear differences between the northern and southern hemispheric PAN distribution. In the southern hemisphere there is a large plume containing elevated PAN amounts of more than 100 pptv between the equator and about 50° S in the altitude range 7–15 km, which we attribute to biomass burning. Maximum values of more than 200 pptv are between 20° S and 40° S
20 at altitudes from 7 to 10 km. There is another, but much more restricted, region of elevated PAN amounts in the northern hemispheric tropics, which contains maximum PAN amounts of 100–150 pptv. No data are available in the northern tropics below 8 km due to permanent cloud contamination of the MIPAS spectra. Further there are also
25 elevated PAN amounts throughout the northern hemispheric mid and high latitudes, decreasing from 150 pptv at 7 km to 75 pptv at 11 km. The major reason for these val-

Global PAN retrieval from MIPAS spectra

N. Glatthor et al.

Title Page

Abstract

Introduction

Conclusions

References

Tables

Figures

◀

▶

◀

▶

Back

Close

Full Screen / Esc

Printer-friendly Version

Interactive Discussion

ues is probably industrial pollution. In contrast to the northern hemisphere, the PAN values from these altitudes at southern high latitudes, which are much less industrially polluted, are very low, namely between 75 pptv at high midlatitudes and 25 pptv above the Antarctic. At stratospheric altitudes between 15 and 20 km the situation is reversed. Here, obviously due to beginning subsidence over the Arctic, the northern hemispheric mid and high latitude PAN amounts are lower than those from the southern hemisphere.

Figure 8 shows the averaged global PAN distribution at 8, 12, 16 and 20 km altitude. At 8 km there are still large data gaps in the tropics due to cloud-contamination. The most prominent feature is a contiguous band of high PAN amounts in the southern hemispheric tropics and subtropics, which extends from the tropical and subtropical Atlantic over Southern Africa, the Southern Indian Ocean and Australia as far as to the West Pacific. The PAN values in this band are generally above 200 pptv and increase up to 500 pptv around Southern Africa. As already mentioned above, we attribute this feature to southern hemispheric biomass burning. In the northern hemispheric subtropics, a more restricted area of elevated PAN is visible at 8 km, extending from the African Sahel zone to India and, possibly strengthened by additional sources of PAN, further northeast above China and the Chinese Sea. At 12 km the area of high southern hemispheric PAN amounts does not extend so far east and ends at the West Australian coast. However, high PAN amounts of 400–500 pptv are now visible above North-East Brasil and above East Africa, i.e. in areas which were masked by clouds below. At 16 km altitude, where deterioration by clouds has mostly disappeared and the global coverage is nearly complete, the highest PAN amounts of up to 200 pptv cover an area extending from tropical Brasil above the Southern Atlantic and tropical Africa to the Southern Indian Ocean. Like in Fig. 7, the northern mid and high latitude PAN values are lower than those from the southern hemisphere. At 20 km altitude, which is everywhere above the tropopause, the biomass burning signal visible at lower altitudes has vanished, and the PAN amounts in the tropics and subtropics seem more or less randomly distributed. However there is some indication for a contiguous area of

**Global PAN retrieval
from MIPAS spectra**

N. Glatthor et al.

[Title Page](#)[Abstract](#)[Introduction](#)[Conclusions](#)[References](#)[Tables](#)[Figures](#)[◀](#)[▶](#)[◀](#)[▶](#)[Back](#)[Close](#)[Full Screen / Esc](#)[Printer-friendly Version](#)[Interactive Discussion](#)

elevated PAN amounts east of the Philippines and above Indonesia. The most distinct feature at this altitude is the difference between northern and southern mid and high latitude values, namely lower values in the northern hemisphere.

In order to check on a qualitative basis, if the observed southern hemispheric tropical and subtropical PAN distribution can be caused by biomass burning, fire counts of the Tropical Rainfall Measuring Mission (TRMM) satellite (Giglio et al., 2000) were inspected for the time period 25 September until 1 December 2003. Indeed, numerous fire count clusters were found in South America, Central and Southern Africa and in Australia over the whole period, indicating intensive biomass burning. As mentioned in Sect. 1, a more detailed and quantitative investigation of the biomass burning plume by combined analysis of several pollutants and trajectory calculations starting above the observed fire count clusters will be presented in a subsequent paper.

Figure 9 shows daily averages of the PAN values in an area containing the southern hemispheric plume (left) and from the same latitude band but from a much less polluted area above the Central and Eastern Pacific (right) at 8, 12, 16 and 20 km altitude. Comparison of both plots shows that the PAN values in the area containing the biomass burning plume are enhanced at 8, 12 and 16 km throughout the observation period, which basically justifies the temporal averaging performed above. At 8 km the PAN amounts range from 200 to 370 pptv, whereas they are around 200 and 80 pptv at 12 and 16 km. The corresponding values above the Pacific are about 130, 90 and 60 pptv, respectively. The stratospheric PAN amounts from 20 km exhibit approximately the same values in both areas and are in good agreement with the average value given by Singh et al. (2000b) (cf. Sect. 3).

5.2 Correlation of southern hemispheric PAN with joint-fitted C_2H_2

Contrary to PAN the joint-fitted trace gas acetylene (C_2H_2) exhibits narrow transition lines in MIPAS spectra (e.g. a well separated line at 776.1 cm^{-1}), which can not be misinterpreted by other continuum-like structures. Thus, since it is also a product of biomass burning, C_2H_2 is well suited for a cross-check of the PAN amounts retrieved

Global PAN retrieval from MIPAS spectra

N. Glatthor et al.

Title Page

Abstract

Introduction

Conclusions

References

Tables

Figures

◀

▶

◀

▶

Back

Close

Full Screen / Esc

Printer-friendly Version

Interactive Discussion

in the southern hemispheric tropics and subtropics. In Fig. 10 the PAN and C₂H₂ data from the latitude band 0° to 40° S, i.e. from the biomass burning zone and the adjacent background region, are plotted against each other for the altitude region 10–16 km. The high correlation between both datasets ($r=0.79$) confirms the measured southern hemispheric PAN distribution.

5.3 Comparison with other space- and airborne measurements

The biomass burning plume detected in the MIPAS PAN distribution is in reasonably good agreement with the area of enhanced CO measured during the last week of September 2003 by the Measurement of Pollution in the Troposphere (MOPITT) instrument on the Terra satellite (Edwards et al., 2006), which is also attributed to biomass burning. On 275 hPa (~10 km) the CO plume mainly covers tropical Brasil, the Southern tropical and subtropical Atlantic, Southern Africa and the Western Indian Ocean.

A qualitative comparison can also be made with airborne in-situ PAN measurements performed by the NASA Global Tropospheric Experiment (GTE) in September/October 1992 over the South Atlantic and the Pacific Exploratory Mission (PEM) in September/October 1996 over the remote South Pacific (Singh et al., 1996, 2000a). These campaigns were dedicated to study the distribution of species in pollution plumes originating from biomass burning regions in South America and South Africa. Over the South Atlantic average PAN amounts of about 300 pptv were found in the altitude region 3–11 km. This agrees well with the average of MIPAS Southern Atlantic (10°S to 30°S) PAN data, which is between 330 pptv at 8 km and 230 pptv at 11 km (cf. Fig. 8). For the remote South Pacific these authors report average PAN values of about 60 pptv between 5 and 11 km altitude, whereas the MIPAS values in this region (0° to 30° S and 90° W to 150° W) are between 115 pptv at 8 km and 80 pptv at 11 km.

Global PAN retrieval from MIPAS spectra

N. Glatthor et al.

Title Page

Abstract

Introduction

Conclusions

References

Tables

Figures

◀

▶

◀

▶

Back

Close

Full Screen / Esc

Printer-friendly Version

Interactive Discussion

6 Summary and conclusions

We have used spaceborne mid-infrared measurements of MIPAS to derive the first global upper tropospheric PAN distribution. The evaluated dataset consists of ten days covering the period 4 October to 1 December 2003. PAN was retrieved in the wavenumber region $775\text{--}800\text{ cm}^{-1}$, which covers its most prominent mid-infrared signature. Beside PAN the interfering species CCl_4 , HCFC-22, CH_3CCl_3 , H_2O , ClONO_2 and C_2H_2 were joint-fitted. PAN profiles were derived for the upper troposphere and lower stratosphere, with about 2.5–4.5 degrees of freedom (depending on useable tangent heights) and a height resolution of 3.5–6 km. The total retrieval error, obtained from an analytical error analysis, ranges from 5% for strongly enhanced tropical PAN amounts (600 pptv at 13 km) to 20% for moderate midlatitude PAN amounts (175 pptv) near the tropopause. The error increases up to 75% towards midlatitude lower tropospheric altitudes and to more than 30% in the lower stratosphere. An additional uncertainty, which could not be taken into account in the analytical error estimation, results from incomplete coverage of the upper tropospheric temperatures by the PAN cross section data set used. Due to this discrepancy the “true” PAN amounts in the cold tropical upper troposphere might be overestimated by up to ~30%. A sensitivity test to check the retrieved PAN data showed a clear degradation of the fit quality for retrievals without consideration of PAN .

The analysed period covers the end of the biomass burning season in the southern hemispheric tropics and subtropics, in which large amounts of pollutants inclusive PAN are produced, uplifted into the free troposphere and distributed over large areas. Indeed, high PAN amounts were found in the southern hemispheric tropics and subtropics in the altitude range 8 to 16 km. At 8 km elevated PAN values formed a nearly worldwide band extending from Brasil over the Southern Atlantic, Central and South Africa, the Southern Indian Ocean and Australia as far as to the South Pacific, whereas they were more confined to the area between Brasil and the western Indian Ocean at higher altitudes. The PAN amounts in this biomass burning area ranged from

Global PAN retrieval from MIPAS spectra

N. Glatthor et al.

Title Page

Abstract

Introduction

Conclusions

References

Tables

Figures

◀

▶

◀

▶

Back

Close

Full Screen / Esc

Printer-friendly Version

Interactive Discussion

**Global PAN retrieval
from MIPAS spectra**

N. Glatthor et al.

Title Page

Abstract

Introduction

Conclusions

References

Tables

Figures

◀

▶

◀

▶

Back

Close

Full Screen / Esc

Printer-friendly Version

Interactive Discussion

200 to 500 pptv at 8 km and from 100 to 200 pptv at 16 km. Enhanced PAN amounts were also found in a much more restricted area between northern subtropical Africa and India. The most significant PAN signal at northern hemispheric midlatitudes with values of up to 250 pptv was detected in an adjacent area extending from China into the Chinese Sea. The average mid and high latitude PAN values at 8 km altitude were 125 pptv in the northern and between 75 and 50 pptv in the southern hemisphere.

During the analysed period numerous fire count clusters were observed in the southern hemispheric tropics and subtropics by the TRMM satellite. Further, the southern hemispheric PAN distribution is well correlated with the joint-fitted C_2H_2 , which is another pollutant produced by biomass burning, and there is good agreement with the CO distribution measured by the MOPITT experiment in late September 2003. On average, the retrieved PAN amounts are also consistent to airborne PAN measurements performed during the southern hemispheric biomass burning periods of 1992 and 1996. All these correspondencies confirm the southern hemispheric PAN distribution observed by MIPAS and its characteristics as biomass burning plume. A more detailed investigation of this plume by combined analysis of several pollutants will be given in a subsequent paper.

Acknowledgements. The authors like to thank the European Space Agency for giving access to MIPAS level-1 data. Meteorological analysis data have been provided by ECMWF. The IMK team has partially been supported by funds of the IMACO project.

References

- Allen, G., Remedios, J. J., Newnham, D. A., Smith, K. M., and Monks, P. S.: Improved mid-infrared cross-sections for peroxyacetyl nitrate (PAN) vapour, *Atmos. Chem. Phys.*, 5, 47–56, 2005a.
- Allen, G., Remedios, J. J., and Smith, K. M.: Low temperature mid-infrared cross-sections for peroxyacetyl nitrate (PAN) vapour, *Atmos. Chem. Phys.*, 5, 3153–3158, 2005b.
- Beine, H. J. and Krognes, T.: The seasonal cycle of peroxyacetyl nitrate in the European Arctic, *Atmos. Envir.*, 34, 933–940, 2000.

**Global PAN retrieval
from MIPAS spectra**

N. Glatthor et al.

Title Page

Abstract

Introduction

Conclusions

References

Tables

Figures

◀

▶

◀

▶

Back

Close

Full Screen / Esc

Printer-friendly Version

Interactive Discussion

Edwards, D. P., Emmons, L. K., Gille, J. C., Chu, A., Attié J.-L., Giglio, L., Wood, S. W., Haywood, J., Deeter, M. N., Massie, S. T., Ziskin, D. C., and Drummond, J. R.: Satellite-observed pollution from Southern Hemisphere biomass burning, *J. Geophys. Res.*, 111, D14312, doi:10.1029/2005JD006655, 2006.

5 European Space Agency: Envisat, MIPAS An instrument for atmospheric chemistry and climate research, ESA Publications Division, ESTEC, P.O. Box 299, 2200 AG Noordwijk, The Netherlands, SP-1229.

Fischer, H. and Oelhaf, H.: Remote sensing of vertical profiles of atmospheric trace constituents with MIPAS limb-emission spectrometers, *Appl. Opt.*, 35(16), 2787–2796, 1996.

10 Friedl-Vallon, F., Maucher, G., Kleinert, A., Lengel, A., Keim, C., Oelhaf, H., Fischer, H., Seefeldner, M., and Trieschmann, O.: Design and characterisation of the balloon-borne Michelson Interferometer for Passive Atmospheric Sounding (MIPAS-B2), *Appl. Opt.*, 43(16), 3335–3355, 2004.

Gaffney, J. S., Marley, N. A., Cunningham, M. M., and Doskey, P. V.: Measurements of peroxyacyl nitrates (PANS) in Mexico City: implications for megacity air quality impacts on regional scales, *Atmos. Environ.*, 33, 5003–5012, 1999.

Giglio, L., Kendall, J. D., and Tucker, C. J.: Remote sensing of fires with the TRMM VIRS, *Int. J. Remote Sensing*, 21, 203–207, 2000.

20 Glatthor, N., von Clarmann, T., Fischer, H., Funke, B., Grabowski, U., Höpfner, M., Kellmann, S., Kiefer, M., Linden, A., Milz, M., Steck, T., Stiller, G. P., Mengistu Tsidu, G., and Wang, D.-Y.: Spaceborne ClO observations by the Michelson Interferometer for Passive Atmospheric Sounding (MIPAS) before and during the Antarctic major warming in September/October 2002, *J. Geophys. Res.*, 109, D11307, doi:10.1029/2003JD004440, 2004.

Höpfner, M., von Clarmann, T., Fischer, H., Funke, B., Glatthor, N., Grabowski, U., Kellmann, S., Kiefer, M., Linden, A., Mengistu Tsidu, G., Milz, M., Steck, T., Stiller, G. P., and Wang, D.-Y.: First spaceborne observations of Antarctic stratospheric ClONO₂ recovery: Austral spring 2002, *J. Geophys. Res.*, 109(D11), D11308, doi:10.1029/2004JD004609, 2004.

Jacobi, H.-W. and Schrems, O.: Peroxyacetyl nitrate (PAN) distribution over the South Atlantic Ocean, *Phys. Chem. Chem. Phys.*, 1, 5517–5521, 1999.

30 Levenberg, K.: A method for the solution of certain non-linear problems in least squares, *Quart. Appl. Math.*, 2, 164–168, 1944.

Marquardt, D. W.: An algorithm for least-squares estimation of nonlinear parameters, *J. Soc. Indust. Appl. Math.*, 11(2), 431–441, 1963.

Nett, H., Perron, G., Sanchez, M., Burgess, A., and Mossner, P.: MIPAS inflight calibration and processor validation, in ENVISAT Calibration Review - Proc. of the European Workshop, 9–13 September 2002, ESTEC, Noordwijk, The Netherlands, CD-ROM, vol. SP-520, edited by H. Sawaya-Lacoste, ESA Publications Division, ESTEC, Postbus 299, 2200 AG Noordwijk, The Netherlands, 2002.

Remedios, J. J., Allen, G., Waterfall, A. M., Oelhaf, H., and Kleinert, A.: Detection of organic compound signatures in infra-red, limb emission spectra observed by the MIPAS-B2 instrument, *Atmos. Chem. Phys. Discuss.*, 6, 10 021–10 061, 2006.

Roberts, J. M., Flocke, F., Chen, G., de Gouw, J., Holloway, J. S., Hübler, G., Neuman, J. A., Nicks Jr., D. K., Nowak, J. B., Parrish, D. D., Ryerson, T. B., Sueper, D. T., Warneke, C., and Fehsenfeld, F. C.: Measurement of peroxy-carboxylic nitric anhydrides (PANs) during the ITCT 2K2 aircraft intensive experiment, *J. Geophys. Res.*, 109, D23S21, doi:10.1029/2004JD004960, 2004.

Rodgers, C. D.: *Inverse Methods for Atmospheric Sounding: Theory and Practice*, volume 2 of *Series on Atmospheric, Oceanic and Planetary Physics*, edited by: Taylor, F. W., World Scientific, 2000.

Singh, H. B.: Reactive nitrogen in the troposphere, *Environ. Sci. Technol.*, 21(4), 320–327, 1987.

Singh, H. B., Herlth, D., Kolyer, R., Chatfield, R., Viezee, W., Salas, L. J., Chen, Y., Bradshaw, J. D., Sandholm, S. T., Talbot, R., Gregory, G. L., Anderson, B., Sachse, G. W., Browell, E., Bachmeier, A. S., Blake, D. R., Heikes, B., Jacob, D., and H. E. Fuelberg: Impact of biomass burning emissions on the composition of the South Atlantic troposphere: Reactive nitrogen and ozone, *J. Geophys. Res.*, 101(D19), 24 203–24 219, 1996.

Singh, H. B., Viezee, W., Chen, Y., Bradshaw, J., Sandholm, S., Blake, D., Blake, N., Heikes, B., Snow, J., Talbot, R., Browell, E., Gregory, G., Sachse, G., and Vay, S.: Biomass burning influences on the composition of the remote South Pacific troposphere: analysis based on observations from PEM-Tropics-A, *Atmos. Environ.*, 34(4), 635–644, 2000a.

Singh, H., Chen, Y., Tabazadeh, A., Fukui, Y., Bey, I., Yantosca, R., Jacob, D., Arnold, F., Wohlfahrt, K., Atlas, E., Flocke, F., Blake, N., Heikes, B., Snow, J., Talbot, R., Gregory, G., Sachse, G., Vay, S., and Kondo, Y.: Distribution and fate of selected oxygenated organic species in the troposphere and lower stratosphere over the Atlantic, *J. Geophys. Res.*, 105(D3), 3795–3805, 2000b.

Steck, T.: Methods for determining regularization for atmospheric retrieval problems, *Appl. Opt.*,

**Global PAN retrieval
from MIPAS spectra**N. Glatthor et al.

[Title Page](#)[Abstract](#)[Introduction](#)[Conclusions](#)[References](#)[Tables](#)[Figures](#)[◀](#)[▶](#)[◀](#)[▶](#)[Back](#)[Close](#)[Full Screen / Esc](#)[Printer-friendly Version](#)[Interactive Discussion](#)

41(9), 1788–1797, 2002.

Stephens, E. R., Hanst, P. L., Dörr, R. C., and Scott, W. E.: Reactions of nitrogen dioxide and organic compounds in air, *Ind. Eng. Chem.*, 1498, 1956.

5 Stiller, G. P. (Ed.): *The Karlsruhe Optimized and Precise Radiative transfer Algorithm (KOPRA)*, Institut für Meteorologie und Klimaforschung, Forschungszentrum Karlsruhe GmbH, 2000.

Temple, P. J. and Taylor, O. C.: World-wide ambient measurements of PAN and implications for plant injury, *Atmos. Envir.*, 17, 1583–1588, 1983.

von Clarmann, T. and Echle, G.: Selection of optimized microwindows for atmospheric spectroscopy, *Appl. Opt.*, 37(33), 7661–7669, 1998.

10 von Clarmann, T., Ceccherini, S., Doicu, A., Dudhia, A., Funke, B., Grabowski, U., Hilgers, S., Jay, V., Linden, A., López-Puertas, M., Martín-Torres, F.-J., Payne, V., Reburn, J., Ridolfi, M., Schreier, F., Schwarz, G., Siddans, R., and Steck, T.: A blind test retrieval experiment for infrared limb emission spectrometry, *J. Geophys. Res.*, 108(D23), 4746, doi:10.1029/2003JD003835, 2003a.

15 von Clarmann, T., Fischer, H., Funke, B., Glatthor, N., Grabowski, U., Höpfner, M., Kellmann, S., Kiefer, M., Linden, A., Mengistu Tsidu, G., Milz, M., Steck, T., Stiller, G.P., Wang, D.-Y., Gil-López, S., and López-Puertas, M.: Retrieval of temperature and tangent altitude pointing from limb emission spectra recorded from space by the Michelson Interferometer for Passive Atmospheric Sounding (MIPAS), *J. Geophys. Res.*, 108(D23), doi:10.1029/2003JD003602, 2003b.

20

ACPD

7, 1391–1420, 2007

Global PAN retrieval from MIPAS spectra

N. Glatthor et al.

Title Page

Abstract

Introduction

Conclusions

References

Tables

Figures

◀

▶

◀

▶

Back

Close

Full Screen / Esc

Printer-friendly Version

Interactive Discussion

EGU

Global PAN retrieval
from MIPAS spectra

N. Glatthor et al.

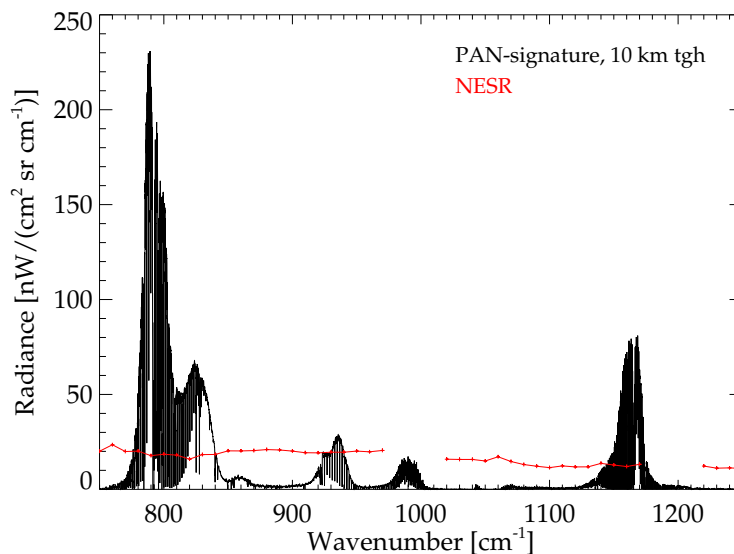


Fig. 1. PAN signatures at 10 km altitude (black), displayed as difference spectrum between model calculations for a tropical atmosphere containing a PAN amount of ~ 200 pptv (at 10 km) and for a tropical PAN-free atmosphere. The main features are the bands centred at 794, 930, 991 and 1163 cm^{-1} . The red curves show the typical noise-equivalent spectral radiance (NESR) in MIPAS spectra from channels A, AB and B (only low-wavenumber edge).

[Title Page](#)[Abstract](#)[Introduction](#)[Conclusions](#)[References](#)[Tables](#)[Figures](#)[◀](#)[▶](#)[◀](#)[▶](#)[Back](#)[Close](#)[Full Screen / Esc](#)[Printer-friendly Version](#)[Interactive Discussion](#)

EGU

Global PAN retrieval
from MIPAS spectra

N. Glatthor et al.

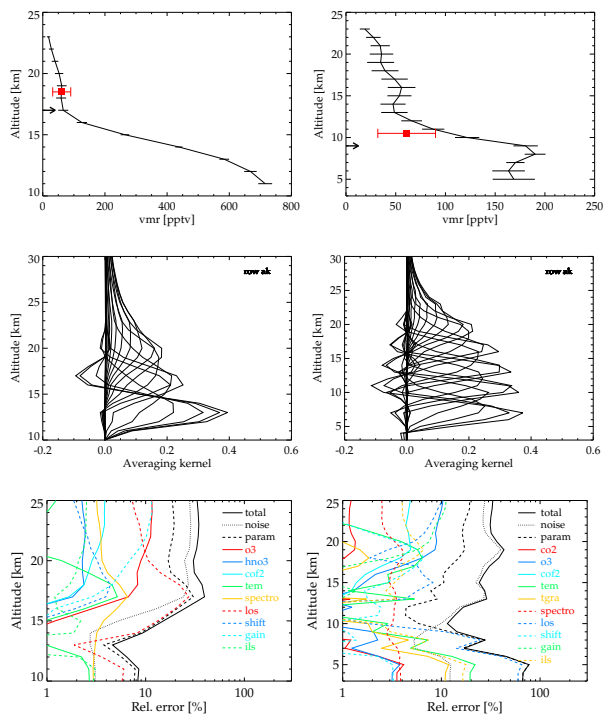


Fig. 2. Left: (top) PAN vmr-profile measured by MIPAS on 21 October, 2003, in polluted air masses over Eastern Africa (12.9° S, 37.2° E); due to cloud-contamination no PAN data are available from below 11 km; the error bars represent the noise error; the black arrow indicates the tropopause height and the red square the average PAN amount in the lowermost stratosphere given by Singh et al. (2000b) along with the scatter of the dataset; (middle) rows of the respective averaging kernel plotted versus altitude; (bottom) total retrieval error (solid black line), noise error (dotted black line), total parameter error (dashed black line), and contributions of various other error sources (see legend). Right: Same as left but for a geolocation from the same orbit at northern midlatitudes (51.4° N, 153.7° W).

Title Page

Abstract

Introduction

Conclusions

References

Tables

Figures

◀

▶

◀

▶

Back

Close

Full Screen / Esc

Printer-friendly Version

Interactive Discussion

Global PAN retrieval
from MIPAS spectra

N. Glatthor et al.

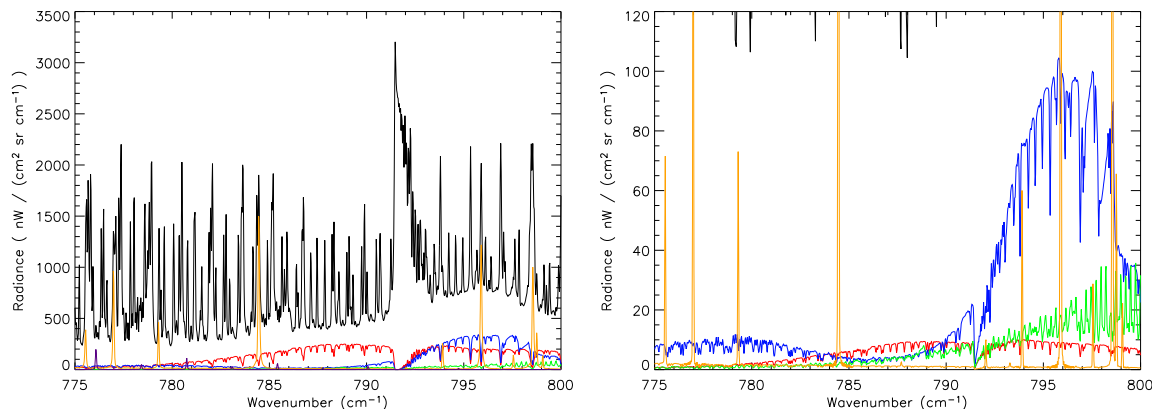


Fig. 3. Left: Modelled spectrum (black) and contributions of fitted PAN (red), CCl₄ (blue), HCFC-22 (green), H₂O (brown) and C₂H₂ (violet) for 13 km altitude at an East-African geolocation (12.9° S, 37.2° E), where high PAN amounts of 600 pptv were retrieved. The contributions of PAN etc. are the differences between model spectra with and without the respective gas. Right: Same as left, but for 19 km altitude and zoom of single species contribution; the contribution of C₂H₂ is very small and not show here.

[Title Page](#)[Abstract](#)[Introduction](#)[Conclusions](#)[References](#)[Tables](#)[Figures](#)[◀](#)[▶](#)[◀](#)[▶](#)[Back](#)[Close](#)[Full Screen / Esc](#)[Printer-friendly Version](#)[Interactive Discussion](#)

EGU

Global PAN retrieval
from MIPAS spectra

N. Glatthor et al.

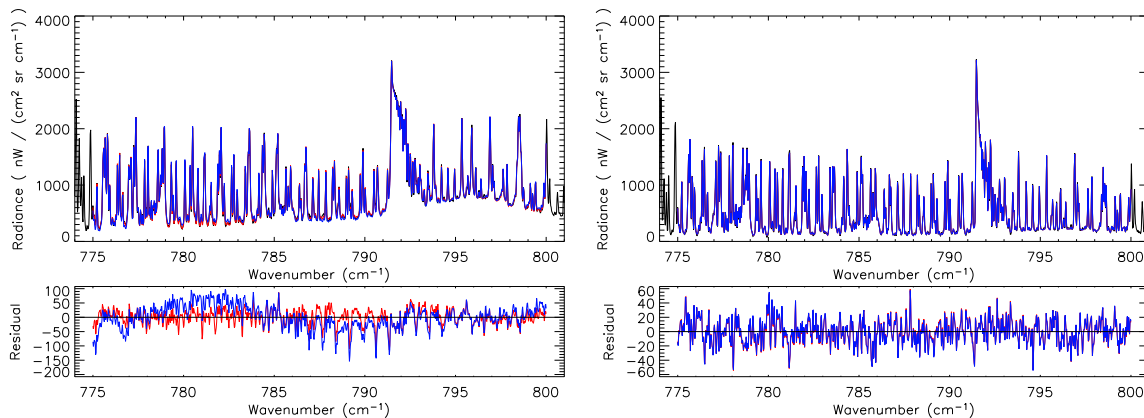


Fig. 4. Left: MIPAS spectrum from 13 km altitude, obtained on 21 October 2003 over Eastern Africa (12.9° S, 37.2° E) (black), as well as fitted spectra and residuals with (red) and without (blue) inclusion of PAN. Right: Same as left, but for 19 km altitude.

[Title Page](#)[Abstract](#)[Introduction](#)[Conclusions](#)[References](#)[Tables](#)[Figures](#)[◀](#)[▶](#)[◀](#)[▶](#)[Back](#)[Close](#)[Full Screen / Esc](#)[Printer-friendly Version](#)[Interactive Discussion](#)

EGU

Global PAN retrieval
from MIPAS spectra

N. Glatthor et al.

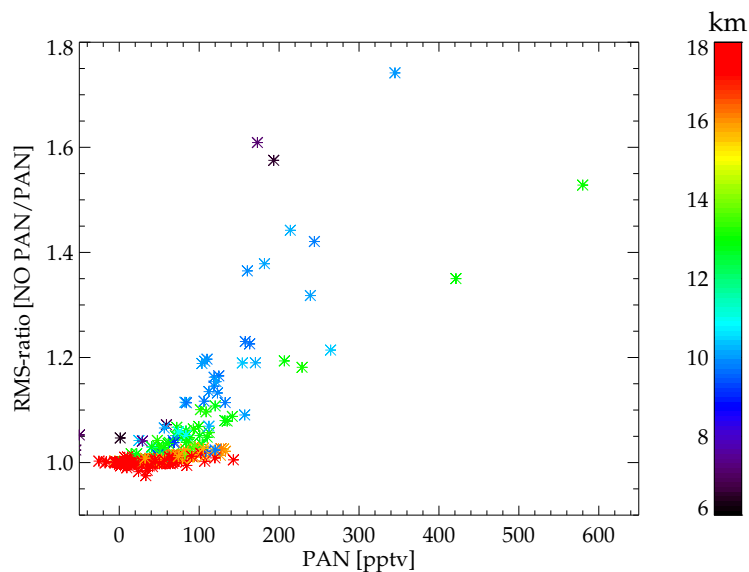


Fig. 5. Ratio of RMS-values resulting from retrievals without and with inclusion of PAN plotted versus retrieved PAN amounts for orbit 8585 of 21 October 2003. Data are color-coded with the tangent height; tangent heights higher than 18 km are also coded red.

[Title Page](#)[Abstract](#)[Introduction](#)[Conclusions](#)[References](#)[Tables](#)[Figures](#)[◀](#)[▶](#)[◀](#)[▶](#)[Back](#)[Close](#)[Full Screen / Esc](#)[Printer-friendly Version](#)[Interactive Discussion](#)

EGU

**Global PAN retrieval
from MIPAS spectra**

N. Glatthor et al.

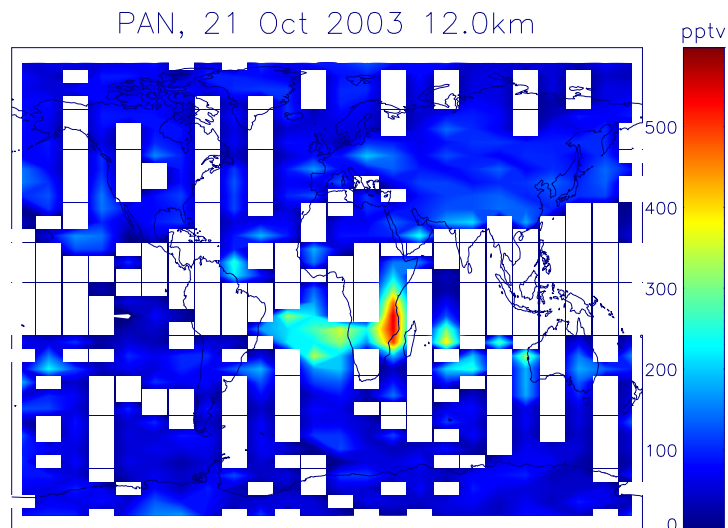


Fig. 6. Global PAN distribution on 21 October 2003 at 12 km altitude, obtained from MIPAS data. The white areas are data gaps due to cloud contamination.

[Title Page](#)[Abstract](#)[Introduction](#)[Conclusions](#)[References](#)[Tables](#)[Figures](#)[◀](#)[▶](#)[◀](#)[▶](#)[Back](#)[Close](#)[Full Screen / Esc](#)[Printer-friendly Version](#)[Interactive Discussion](#)

EGU

Global PAN retrieval
from MIPAS spectra

N. Glatthor et al.

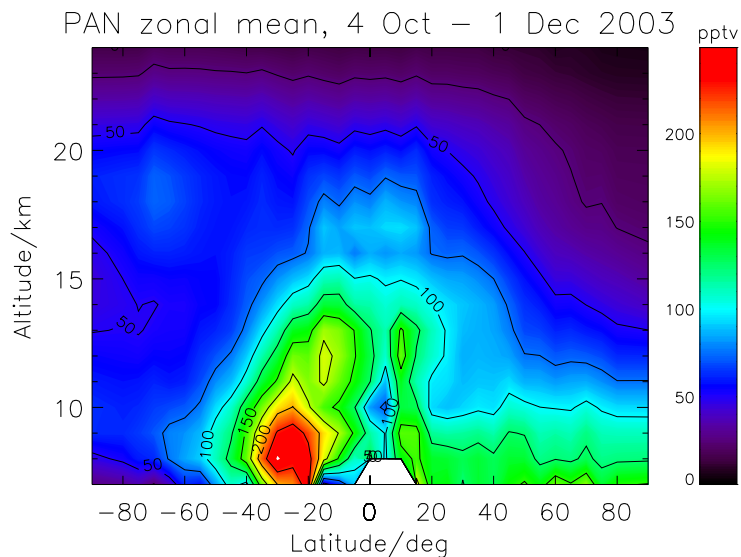


Fig. 7. Latitudinal PAN distribution, averaged zonally and over 10 days between 4 October and 1 December, 2003.

[Title Page](#)[Abstract](#)[Introduction](#)[Conclusions](#)[References](#)[Tables](#)[Figures](#)[◀](#)[▶](#)[◀](#)[▶](#)[Back](#)[Close](#)[Full Screen / Esc](#)[Printer-friendly Version](#)[Interactive Discussion](#)

EGU

Global PAN retrieval
from MIPAS spectra

N. Glatthor et al.

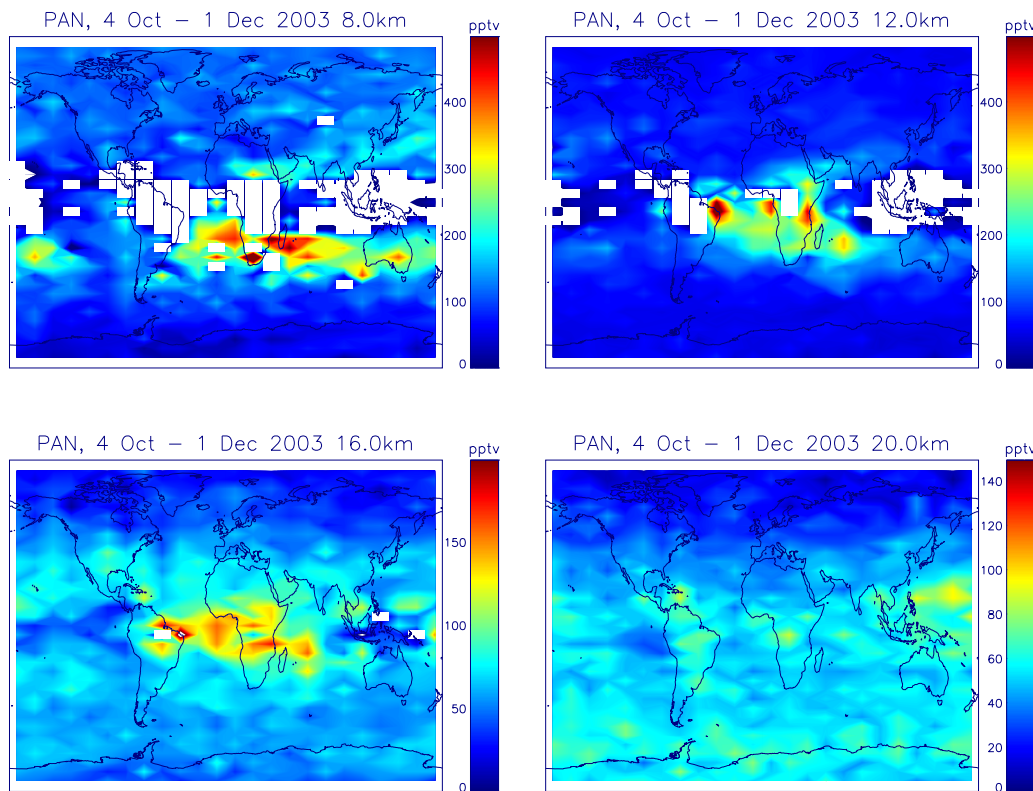


Fig. 8. Global PAN distribution at 8, 12, 16 and 20 km altitude (top left to bottom right) averaged over 10 days between 4 October and 1 December, 2003. The white areas are data gaps due to cloud contamination.

[Title Page](#)[Abstract](#)[Introduction](#)[Conclusions](#)[References](#)[Tables](#)[Figures](#)[◀](#)[▶](#)[◀](#)[▶](#)[Back](#)[Close](#)[Full Screen / Esc](#)[Printer-friendly Version](#)[Interactive Discussion](#)

Global PAN retrieval
from MIPAS spectra

N. Glatthor et al.

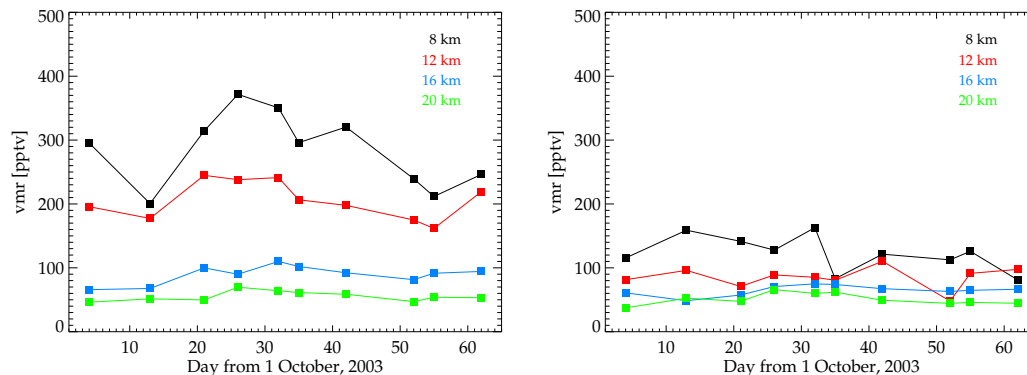


Fig. 9. Left: Daily averages of PAN amounts measured in the biomass burning zone (0° – 30° S and 60° W– 135° E) at 8 km (black), 12 km (red), 16 km (blue) and 20 km altitude (green). Right: Same as left, but for an adjacent background zone above the South Pacific (0° – 30° S, 180° W– 90° W).

[Title Page](#)[Abstract](#)[Introduction](#)[Conclusions](#)[References](#)[Tables](#)[Figures](#)[I◀](#)[▶I](#)[◀](#)[▶](#)[Back](#)[Close](#)[Full Screen / Esc](#)[Printer-friendly Version](#)[Interactive Discussion](#)

EGU

Global PAN retrieval
from MIPAS spectra

N. Glatthor et al.

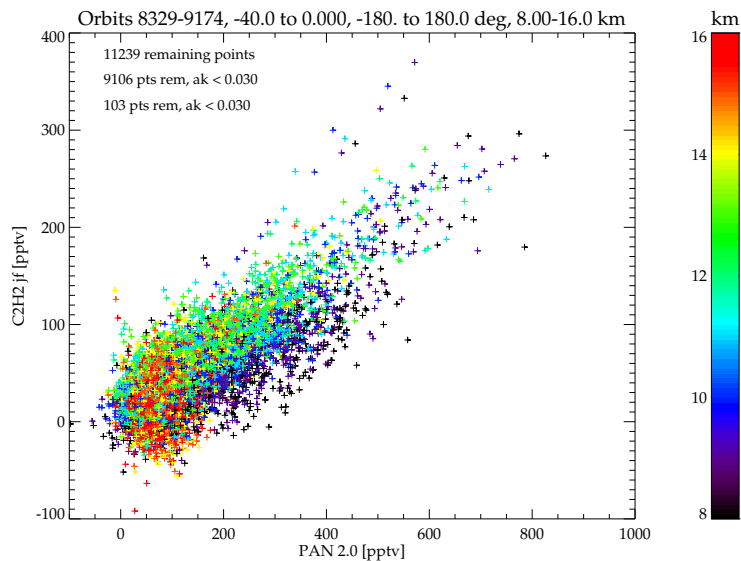


Fig. 10. Correlation between PAN and joint-fitted C₂H₂ amounts, measured by MIPAS on 10 days between 4 October and 1 December, 2003, in the latitude band 0° to 40° S between 8 and 16 km altitude; correlation coefficient $r=0.79$.

[Title Page](#)[Abstract](#)[Introduction](#)[Conclusions](#)[References](#)[Tables](#)[Figures](#)[◀](#)[▶](#)[◀](#)[▶](#)[Back](#)[Close](#)[Full Screen / Esc](#)[Printer-friendly Version](#)[Interactive Discussion](#)

EGU