

**NLCs at Svalbard by  
lidar**

J. Höffner et al.

# First observations of noctilucent clouds by lidar at Svalbard

**J. Höffner, C. Fricke-Begemann, and F.-J. Lübken**

Leibniz-Institut für Atmosphärenphysik, Kühlungsborn, Germany

Received: 23 October 2002 – Accepted: 18 December 2002 – Published: 4 February 2003

Correspondence to: F.-J. Lübken (luebken@iap-kborn.de)

Title Page

Abstract

Introduction

Conclusions

References

Tables

Figures

◀

▶

◀

▶

Back

Close

Full Screen / Esc

Print Version

Interactive Discussion

© EGU 2003

## Abstract

In summer 2001 a potassium lidar was installed near Longyearbyen (78°N) on the north polar island of Spitsbergen which is part of the archipelago Svalbard. At the same place a series of meteorological rockets (“falling spheres”, FS) were launched which gave temperatures from the lower thermosphere to the stratosphere. The potassium lidar is capable of detecting noctilucent clouds (NLCs) and of measuring temperatures in the lower thermosphere, both under daylight conditions. In this paper we give an overview on the NLC measurements (the first at this latitude) and compare the results with temperatures from meteorological rockets which have been published recently (Lübken and Müllemann, 2003). NLCs were observed from 12 June (the first day of operation) until 12 August when a period of bad weather started. When the lidar was switched on again on 26 August, no NLC was observed. The mean occurrence frequency in the period 12 June – 12 August (“lidar NLC period”) is 77%. The mean of all individual NLC peak altitudes is 83.6 km (variability: 1.1 km). The mean peak NLC altitude does not show a significant variation with season. The average top and bottom altitude of the NLC layer is 85.1 and 82.5 km, respectively, with a variability of ~1.2 km. The mean of the maximum volume backscatter coefficient  $\beta_{\max}$  at our wavelength of 770 nm is  $3.9 \times 10^{-10}$ /m/sr with a large variability of  $\pm 3.8 \times 10^{-10}$ /m/sr. Comparison of NLC characteristics with measurements at ALOMAR (69° N) shows that the peak altitude and the maximum volume backscatter coefficient are similar at both locations but NLCs occur more frequently at higher latitudes.

Simultaneous temperature and NLC measurements are available for 3 flights and show that the NLC layer occurs in the lower part of the height range with super-saturation. The NLC peak occurs over a large range of degree of saturation (S) whereas most models predict the peak at S=1. This demonstrates that steady-state considerations may not be applicable when relating individual NLC properties to background conditions. On the other hand, the mean variation of the NLC appearance with height and season is in agreement with the climatological variation of super-saturation

### NLCs at Svalbard by lidar

J. Höffner et al.

Title Page

Abstract

Introduction

Conclusions

References

Tables

Figures

◀

▶

◀

▶

Back

Close

Full Screen / Esc

Print Version

Interactive Discussion

derived from the FS temperature measurements.

## 1. Introduction

Noctilucent clouds (NLCs) have been observed since more than 100 years in the upper summer mesosphere at polar and midlatitudes (Jesse, 1889; Gadsden and Schröder, 1989). The appearance of NLCs is closely connected to the very low temperatures in the summer mesopause region and is therefore indirect evidence for the peculiar seasonal variation of the thermal structure in the upper atmosphere (“cold” in summer and “warm” in winter) (von Zahn and Meyer, 1989; Lübken et al., 1996; Lübken, 1999). It was stated some years ago that the occurrence frequency of NLCs has increased in the last decades and that this is perhaps related to anthropogenic changes (Thomas et al., 1989; Gadsden, 1998). More recently, however, it has been pointed out that this increase is presumably due to a bias in the data base and that there is in fact no trend present, which is in line with the observation that temperatures in the high latitude summer mesopause region do not show a long term trend (Kirkwood and Stebel, 2003; Lübken, 2000). Whether or not NLCs are an indicator for long term trends in the upper atmosphere can only be solved if we better understand the physical processes leading to NLCs and their relationship to the background conditions such as temperature and water vapor concentration.

The experimental investigation of NLCs has been significantly improved by lidars, which can now detect them even during full daylight (Hansen et al., 1989; von Zahn et al., 1998; Fricke-Begemann et al., 2002). A series of NLC observations at different locations, different wavelengths, and different observational setups has become available in the last years (von Cossart et al., 1999; Alpers et al., 2000; Chu et al., 2001; Thayer et al., 2002; Baumgarten et al., 2002). These observations have significantly improved our knowledge about the nature of NLCs and have initiated various model studies to better understand the microphysical processes leading to their genesis including the dependence on background conditions varying with time, height, latitude,

### NLCs at Svalbard by lidar

J. Höffner et al.

Title Page

Abstract

Introduction

Conclusions

References

Tables

Figures

◀

▶

◀

▶

Back

Close

Full Screen / Esc

Print Version

Interactive Discussion

and longitude (Jensen and Thomas, 1988; Garcia, 1989; Fritts et al., 1993; Klostermeyer, 1998; Berger and von Zahn, 2002; Rapp et al., 2002). A critical test of some of these models comes from observations of NLCs at different latitudes which (if greater than approximately 60°) is only possible with lidars since the sky is too bright to observe NLCs by the naked eye.

In this paper we report on the first observations of NLCs by a potassium lidar on Svalbard (78° N). These observations will be compared with measurements of the thermal structure in the upper mesosphere region by means of meteorological rockets (“falling spheres”, FS). First results of these flights have been published in Lübken and Müllemann (2003) and some comparison with NLC and PMSE (polar mesosphere summer echoes) has been presented in Lübken et al. (2002). In the next section we describe the experimental techniques, namely the detection of NLCs with lidar, and the temperature measurements by meteorological rockets. In Sect. 3 we present the experimental data relevant to NLCs. A comparison of our results with measurements at other latitudes and the geophysical implications are discussed in Sect. 4.

## 2. Experimental techniques

### 2.1. K lidar

The mobile potassium resonance lidar of the IAP was designed to measure atmospheric temperatures and potassium abundance in the mesopause region (80–105 km). With a narrowband alexandrite laser the K(D<sub>1</sub>) resonance line at 769.9 nm is probed scanning the laser wavelength by a few pm over the Doppler broadened absorption line. From the spectral shape of the effective backscatter coefficient vertical profiles of air temperature and potassium density are derived. The instrument is described in more detail by von Zahn and Höffner (1996). Since November 2000 the lidar is provided with a Faraday anomalous dispersion optical filter for daylight rejection (Fricke-Begemann et al., 2002) which allows operation under polar summer conditions.

## NLCs at Svalbard by lidar

J. Höffner et al.

Title Page

Abstract

Introduction

Conclusions

References

Tables

Figures

◀

▶

◀

▶

Back

Close

Full Screen / Esc

Print Version

Interactive Discussion

## NLCs at Svalbard by lidar

J. Höffner et al.

Title Page

Abstract

Introduction

Conclusions

References

Tables

Figures

◀

▶

◀

▶

Back

Close

Full Screen / Esc

Print Version

Interactive Discussion

© EGU 2003

The lidar was installed in spring 2001 at 78.23° N, 15.39° E, near Longyearbyen, a small town on the north polar island of Spitsbergen which is part of the archipelago Svalbard.

Potassium lidar profiles are retrieved every 2 min and at 200 m intervals vertically. At altitudes between approximately 35 km and 120 km the lidar records the photons backscattered from air molecules, from the K layer, and from aerosols. A NLC is detected as an enhanced signal (relative to the background noise and the air molecule signal) which does not vary when the laser frequency is tuned over the potassium resonance line. The NLC is quantified by determining the volume backscatter coefficient (BSC) which is defined as:

$$\beta_{NLC}(z, \lambda) = n_{NLC}(z) \cdot \left. \frac{d\sigma(180^\circ)}{d\Omega} \right|_{NLC}, \quad (1)$$

where  $n_{NLC}$  is the number density of NLC particles and  $\left. \frac{d\sigma(180^\circ)}{d\Omega} \right|_{NLC}$  is the effective cross section for backscatter by an individual NLC particle for a specific NLC particle size distribution and the applied wavelength of 770 nm. An expression analogous to Eq. (1) applies for scattering on air molecules ( $\beta_m$ ). In practice the backscatter coefficient is calculated from the backscatter ratio  $R_{NLC}(z)$  and from  $\beta_m$  by:

$$\beta_{NLC}(z) = (R_{NLC}(z) - 1) \cdot \beta_m(z), \quad (2)$$

where the backscatter ratio  $R_{NLC}(z)$  is determined from the backscatter signals

$$R_{NLC}(z) = \frac{S(z)}{S_m(z)}. \quad (3)$$

$S(z)$  is the total signal (molecular plus NLC) after subtraction of the background, and  $S_m(z)$  is the backscatter signal from the molecules. The molecular backscatter coefficient  $\beta_m(z)$  in Eq. (2) is calculated as follows: Between 40 and 60 km the backscatter signal  $S = S_m$  (there are no aerosols or K atoms at these heights) is normalized to the molecular backscatter signal, i. e.  $S_m = c \cdot \beta_m$ , which is calculated from the air densities taken from CIRA-1986 (Fleming et al., 1990). The constant  $c$  constrains  $\beta_m(z)$  at

---

**NLCs at Svalbard by  
lidar**J. Höffner et al.

---

[Title Page](#)[Abstract](#)[Introduction](#)[Conclusions](#)[References](#)[Tables](#)[Figures](#)[I◀](#)[▶I](#)[◀](#)[▶](#)[Back](#)[Close](#)[Full Screen / Esc](#)[Print Version](#)[Interactive Discussion](#)

© EGU 2003

NLC altitudes. The NLC signal can be distinguished from the backscatter by K atoms as it is constant in wavelength. Thus the backscatter coefficients for both can be determined simultaneously. The ability to separate a NLC from the K layer depends on the strength of the NLC relative to the potassium signal. Generally, a strong K signal reduces the sensitivity to detect a NLC, and vice versa. For example, a NLC with a volume backscatter coefficient of  $1 \cdot 10^{-10}$  /m/sr can be detected in a K layer with a density of up to  $\sim 7$  /cm<sup>3</sup>.

In Fig. 1 the NLC and the potassium number densities on 31 July 2001, are shown. The potassium layer spreads over a height range of approximately 85–100 km and is clearly separated from the NLC. The NLC layer is present nearly permanently after 01:00 UT. The maximum BSC ( $\beta_{\max}$ ) appears at a fairly constant altitude of  $\sim 83$  km with a root-mean-square (RMS) variability of  $\pm 0.9$  km. At 05:09 UT the maximum BSC of  $20.8 \cdot 10^{-10}$  /m/sr is detected at an altitude of 82.3 km. At the lidar wavelength of 770 nm this BSC corresponds to a Rayleigh signal originating from  $\sim 45.5$  km altitude. The NLC lasted in total for more than 11 h and faded at the end of the observation period which was due to bad weather. Prior to the statistical analysis presented in the next sections we have applied a vertical and temporal filtering of  $\pm 200$  m and  $\pm 10$  min to the data.

## 2.2. Falling spheres and the ROMA campaign

In summer 2001 a field campaign was conducted close to Longyearbyen. The campaign was part of the ROMA (“Rocket borne Observations in the Middle Atmosphere”) project. From 16 July to 14 September 2001, a series of 30 small meteorological rockets were launched from a mobile launcher installed close to Longyearbyen. Here we concentrate on temperature measurements employing the “falling sphere” (FS) technique which is described in detail elsewhere (Schmidlin, 1991; Lübken et al., 1994). This technique gives densities and horizontal winds in an altitude range from approximately 95 down to 30 km. Temperatures are obtained by integrating the density profile assuming hydrostatic equilibrium. A summary of temperatures and densities, and a

list of flight dates and labels is presented by [Lübken and Müllemann \(2003\)](#). A typical uncertainty in temperature at 83 km is  $\pm 4$  K. The K lidar and the rocket launcher were only  $\sim 3$  km apart from each other. The falling sphere measurements are made at a horizontal distance of approximately 40–50 km from the launcher.

### 3. Observations

#### 3.1. Noctilucent clouds

We have analyzed all available backscatter profiles for NLC and found the first occurrence on the first observation day (12 June) and the last on 12 August. Note, that the lidar was out of operation for a significant part of the campaign because of bad weather. The first measurements after 12 August were made on 26 August and no NLC was observed. In the following we will refer to the time period 12 June until 12 August as the “lidar NLC period”. The total number of observing hours in the lidar NLC period was 184.5 h (5894 profiles) and noctilucent clouds were detected during 142.1 h (4549 profiles), i.e. during 77% of the time. We have analyzed the NLC layers in time slots of 24 h centered around midnight. The result of this analysis is presented in Table 1. As can be seen from Fig. 2 the daily mean occurrence rate varies between 0% (no NLC) and 100% (permanent NLC). Ignoring days with little observation time (i.e. less than 1 h) the scatter of the occurrence rates is  $\pm 30\%$ . We have analyzed the daily mean occurrence rates in two subsets, namely in the period 12 June – 4 July, and 12 July – 12 August, respectively. There are 8 days with little observation time (less than 1 h). Ignoring these days we find mean occurrence rates of 51% and 80% with a RMS variability of  $\pm 34\%$  and  $\pm 19\%$ , respectively. We have also examined the occurrence frequency in a different manner, namely by summing up all times with and without NLC in the first and second subset (no pre-calculation for each day). Now, the total occurrence rates are more equal in both subsets: 74% compared to 78%. While strong NLCs (peak BSC  $> 5 \times 10^{-10}$  /m/sr) are evenly distributed (18/19%), medium NLCs (BSC

Title Page

Abstract

Introduction

Conclusions

References

Tables

Figures

◀

▶

◀

▶

Back

Close

Full Screen / Esc

Print Version

Interactive Discussion

---

**NLCs at Svalbard by  
lidar**J. Höffner et al.

---

[Title Page](#)[Abstract](#)[Introduction](#)[Conclusions](#)[References](#)[Tables](#)[Figures](#)[◀](#)[▶](#)[◀](#)[▶](#)[Back](#)[Close](#)[Full Screen / Esc](#)[Print Version](#)[Interactive Discussion](#)

© EGU 2003

2–5) are more frequent in the first period (38/25%) and the occurrence of weak NLCs increases (18/35%). At least part of this increase is probably due to the fact that the performance of the K lidar was improved throughout the campaign and the solar elevation is lowered which led to a sensitivity increase by a factor of 2–3. We note that more days of observations are available in the second half of the NLC season.

In Fig. 3 the daily mean NLC peak altitudes are shown. Ignoring days where the observation period is less than 1 h the average NLC peak altitude determined from the daily means is 83.4 km. The mean of all individual NLC peak altitudes (without pre-averaging) is 83.6 km, i.e. practically the same value. This demonstrates that the daily mean altitudes are representative for the entire data set. The RMS variation of the mean NLC altitude is 1.1 km. The median of the daily NLC peak altitudes is 83.5 km, i.e. very similar to the mean. The distribution of all individual NLC peak altitudes is shown in Fig. 4. The width of the distribution (FWHM) corresponding to a normal distribution is 2.8 km. We have fitted a Gaussian separately to the lower and upper part of the distribution keeping the maximum value at an altitude of 83 km fixed. We find half widths (FWHM) of 1.9 and 3.5 km, respectively. This indicates that the NLC peak altitudes extend to somewhat higher altitudes above the mean (compared to below). For comparison with measurements at other latitudes we have also determined the centroid (= center of mass) altitudes  $z_c$  of each NLC profile. The mean of all these centroid altitudes is of  $83.7 \pm 1.0$  km. Furthermore, we have calculated the “center of half width” defined in Fiedler et al., 2002 and arrive at a mean value of 83.6 km (RMS variability is 1.1 km), again close to the mean of the NLC peak altitudes.

We have analyzed the NLC data in the two subsets mentioned above and found the mean of the individual NLC peak altitudes at  $83.6 \pm 0.9$  km and  $83.5 \pm 1.2$  km, respectively. This indicates that there is no significant NLC height difference in these subsets which is also evident from the slope of a straight line fitted to the daily mean peak altitudes in Fig. 3 which is small ( $-0.10$  km/month) and not significant (uncertainty:  $\pm 0.25$  km/month). For each NLC profile we have determined the uppermost (“top”) and the lowermost (“bottom”) altitude of the NLC layer. The average top and bottom



altitude calculated from all individual NLC profiles is 85.1 and 82.5 km, respectively (RMS variation:  $\sim 1.2$  km). This indicates a steeper gradient at the lower edge of the layer. The mean layer thickness (FWHM) is 1.7 km (variability: 0.9 km).

The upper edge of the NLC layer is always located below the lower edge of the potassium layer. This implies that there are presumably no very weak NLC present inside the K layer which we could have missed due to the somewhat reduced sensitivity to detect NLCs inside the K layer. We therefore argue that our statistics on the altitude and occurrence distribution for weak NLCs is not influenced by the decreased sensitivity inside the K layer.

We have also analyzed the statistical properties of the maximum volume backscatter coefficient ( $\beta_{\max}$ ) at our wavelength of 770 nm. The mean  $\beta_{\max}$  for the entire season determined from all individual NLC profiles (ignoring profiles with no NLC) is  $3.9 \times 10^{-10}$  /m/sr with a large RMS variability of nearly 100%. Again, we have analyzed the NLC data in the two subsets mentioned above and found mean values for  $\beta_{\max}$  of 4.1 and 3.8 with a RMS variability of 3.0 and 4.1, respectively (all values in units of  $10^{-10}$  /m/sr). This implies that there is no significant change of the maximum BSC in these subsets. We note that the measurement of the maximum BSC does not depend on the lidar sensitivity as long as  $\beta_{\max}$  is significantly above the detection threshold. With the increased sensitivity of the lidar (see above) more weak NLCs are included in the statistics and a somewhat lower mean value is expected for the second subset.

Another characteristic of NLC layers that can be compared with models is the distribution of  $\beta_{\max}$  with altitude. For example, from steady state considerations of NLC growth and sedimentation it is sometimes taken for granted that the strongest NLCs occur at lowest heights. In Fig. 5a we present a scatter plot of all individual  $\beta_{\max}$  values versus peak altitudes. Indeed, there is a weak tendency for brighter NLCs to occur at lower altitudes and this trend varies with  $\beta_{\max}$ . To arrive at more quantitative results we have averaged the peak altitudes in  $\beta_{\max}$ -bins of  $0.4 \times 10^{-10}$  /m/sr and have fitted two straight lines, namely for small  $\beta_{\max}$  values (up to 3) and for larger  $\beta_{\max}$  (see Fig. 5b). At small  $\beta_{\max}$  values the slope of a regression line is  $-0.58 \pm 0.08$ . The slope at larger

---

## NLCs at Svalbard by lidar

J. Höffner et al.

---

[Title Page](#)[Abstract](#)[Introduction](#)[Conclusions](#)[References](#)[Tables](#)[Figures](#)[◀](#)[▶](#)[◀](#)[▶](#)[Back](#)[Close](#)[Full Screen / Esc](#)[Print Version](#)[Interactive Discussion](#)

$\beta_{\max}$  values is very small ( $-0.023 \pm 0.008$ ) but still statistically significant (all numbers are in the physical dimensions of Fig. 5).

### 3.2. NLCs and falling sphere temperatures

Simultaneous K lidar measurements and FS temperature profiles are available for 4 flights, where during 3 of these flights a NLC was detected (see Table 2). Two more flights, namely ROFS03 and ROFS05, took place a few hours prior to the closest K lidar measurements and will therefore not be considered in the following discussion. In Fig. 6 we present the temperature profile from ROFS07 and the NLC profile from Fig. 1 averaged for  $\pm 1$  h around the rocket launch. Furthermore, two frost point temperature profiles  $T_{\text{frost}}$  are shown using two different water vapor mixing ratio profiles: a) 5 ppmv, constant with altitude, and b) the  $[\text{H}_2\text{O}]$  values from the theoretical model of Körner and Sonnemann (2001). As can be seen from Fig. 6 the actual temperatures are lower than  $T_{\text{frost}}$  in an altitude range from approximately 82.5 to 92 km (depending on  $[\text{H}_2\text{O}]$ ) indicating that it is cold enough at these heights for ice particles to grow or to exist. The NLC in Fig. 6 appears at the bottom of the height range where the actual temperatures are smaller than  $T_{\text{frost}}$ . We will come back to a comparison of NLCs and temperatures in Sect. 4.1

In Fig. 6 we also present the mean K lidar temperature profile measured above 88 km simultaneously with FS flight ROFS07. The lidar temperature profile is averaged over 1 h. As can be seen from this figure there is nice agreement between both measurements. It should be noted, that the temperature at the top of the FS profile should be identical to the K lidar temperature since the latter was taken as the “start temperature” in the FS data reduction procedure (see Lübken and Müllemann, 2003, for more details). The small difference observed in Fig. 6 is due to the fact that the K lidar temperatures were further averaged and smoothed before they were used in the FS data reduction procedure.

Title Page

Abstract

Introduction

Conclusions

References

Tables

Figures

◀

▶

◀

▶

Back

Close

Full Screen / Esc

Print Version

Interactive Discussion

## 4. Discussion

### 4.1. NLCs and the degree of saturation

In Fig. 7 two more temperature profiles and the corresponding NLC layers are shown. As in Fig. 6 there is an extended height range with super-saturation ( $T_{\text{atm}} < T_{\text{frost}}$ ) at approximately 82–92 km, but the NLC appears only in the lower part of this height range. Using water vapor values from the model of Körner and Sonnemann (2001) we have calculated the degree of saturation (S) at the NLC peak and at the top and the bottom of the layer. The results of these calculations are presented in Table 3. Before we come to a more detailed discussion of the S values we note that even in a situation of under-saturation, e. g.  $S=0.5$ , an ice particle with a radius of 20 nm will exist for several hours before it is completely evaporated. Furthermore, at NLC altitudes an uncertainty in temperature of 2–3° corresponds to an uncertainty in S by a factor of 2.

As can be seen from Table 3 the degree of saturation at the NLC peak varies substantially and differs significantly from  $S=1$ , a value which is sometimes assumed in climatological model studies. For flight ROFS07 a major part of the NLC is located in a region of under-saturation unless the actual  $[\text{H}_2\text{O}]$  concentration is significantly larger compared to the model value of  $\sim 2.8$  ppmv. For flight ROFS09, on the other hand, very large S values are found in the entire NLC layer. Model studies of microphysical processes controlling the generation of NLCs in the presence of gravity waves have shown that (for long period gravity waves) the NLC peak coincides with the  $S=1$  level only very seldomly and values larger and smaller than  $S=1$  will occur (Rapp et al., 2002). Our observations support this finding even if we take into account the uncertainties about the actual S value discussed above.

As can also be seen from Table 3 there is no obvious correlation between the degree of saturation and the maximum volume backscatter coefficient  $\beta_{\text{max}}$ . The peak BSC varies only little and is largest in a case of moderate super-saturation ( $S=2.1$  for flight ROFS10). This again supports the statement that arguments derived from steady-state assumptions may not be applicable when relating individual NLC proper-

Title Page

Abstract

Introduction

Conclusions

References

Tables

Figures

◀

▶

◀

▶

Back

Close

Full Screen / Esc

Print Version

Interactive Discussion

---

**NLCs at Svalbard by  
lidar**J. Höffner et al.

---

Title Page

Abstract

Introduction

Conclusions

References

Tables

Figures

◀

▶

◀

▶

Back

Close

Full Screen / Esc

Print Version

Interactive Discussion

© EGU 2003

ties to the background thermal field. On the other hand, the mean variation of the NLC appearance with height and season is in agreement with the climatological variation of super-saturation derived from the FS temperature measurements (see Fig. 4 in [Lübken and Müllemann, 2003](#)). At the end of our lidar NLC period (12 August, i.e. when measurements had to be terminated due to bad weather) temperatures are still low enough for super-saturation. When the lidar was started again on 26 August temperatures had just become too high for super-saturation and indeed no NLC was observed. The maximum S values deduced from the FS climatology occur around 87–88 km and reach values of 26, 2.9, and 0.2 for times 8.5, 8.75, and 9.0, respectively, in the nomenclature of Table 2 in [Lübken and Müllemann, 2003](#) (these times correspond to 15 August, 23 August, and 1 September). This indicates that at 26 August (time=8.84) climatological temperatures are too high for the creation of NLCs. We conclude that there is a very close correspondence of the general morphology of NLCs and the local thermal structure over Spitsbergen allowing for super-saturation, in spite of the large time constants (h) which are associated with large horizontal transport distances ([Berger and von Zahn, 2002](#)).

In summary, NLCs appear in the lower part of the height range with super-saturation but details of their morphology (BSC, layer width etc.) do not depend on the local thermal structure. This is in line with model results which suggest that it can take several hours before an ice particle reaches a size detectable by lidar ([Berger and von Zahn, 2002](#); [Rapp et al., 2002](#)). During this time the particle is carried hundreds of kilometers by the mean background wind. On the other hand, the mean variation of the NLC appearance with height and season is in nice agreement with the climatological variation of the thermal structure in the upper mesosphere.

#### 4.2. Comparison of NLCs with other latitudes

The characteristics of NLCs observed by the R/M/R-lidar at ALOMAR (69° N) has recently been summarized by [Fiedler et al. \(2002\)](#) based on data from 5 summer seasons. Technical details of the lidar are described in [von Zahn et al. \(2000\)](#). Although

our statistics is poorer compared to ALOMAR we will now compare the main NLC features at both sites. The analysis of Fiedler et al. was performed in 5 time periods of 15 days each. Our lidar NLC period at Spitsbergen is best represented by their periods 2–5 (16 June – 15 August).

5 The NLC occurrence frequency at ALOMAR varies from year to year and is in the range ~30–50%. This is considerably less compared to Spitsbergen (77%). In the year of our measurements (2001) the mean occurrence frequency at ALOMAR is 28% which is less than half compared to Spitsbergen. To avoid an instrumental bias in these values we compare the rates derived for NLCs which are stronger than a threshold of  
10  $\beta_{\max} > 4$  which is clearly above the detection limit of the ALOMAR lidar. The occurrence rate then ranges between 20 and 30%, with the lower value observed in 2001. Using a corresponding threshold of  $\beta_{\max} > 1.25$  at 770 nm (see below), which is above our instrumental limit, we obtain an occurrence rate of 61%, again more than twice the value from 69° N. This occurrence increase of NLCs with latitude is in line with the  
15 increase of polar mesospheric cloud (PMC) frequency observed by satellites (Thomas et al., 1991).

The mean center NLC altitude  $z_c$  at ALOMAR varies little in periods 2–5 and is approximately 83.3 km (variability:  $\pm 1.2$  km) which is very similar to our value of 83.6 km. The center altitude at ALOMAR has increased since 1997 and reaches ~83.9 km in  
20 2001, thus varying about the value at Svalbard. Fiedler et al. (2002) find only very little seasonal variation of  $z_c$ , again very similar to our observations at Spitsbergen. The mean width of 1.3 km at ALOMAR is slightly less compared to Spitsbergen (1.7 km).

The maximum BSC at ALOMAR has decreased since 1997 and reached a mean of  
25  $\beta_{\max} = 9 \cdot 10^{-10} / \text{m/sr}$  in 2001. This value is slightly larger (9.6) if the same time period in 2001 is taken at ALOMAR compared to our campaign period at Spitsbergen. Please note that there exist large differences between mean, median and mode values for  $\beta_{\max}$  as is described in more detail in Fiedler et al. (2002).

When comparing NLC strengths measured by different lidars the wavelength dependence of the backscatter coefficient must be taken into account. The ratio of the BSCs

---

## NLCs at Svalbard by lidar

J. Höffner et al.

---

Title Page

Abstract

Introduction

Conclusions

References

Tables

Figures

◀

▶

◀

▶

Back

Close

Full Screen / Esc

Print Version

Interactive Discussion

NLCs at Svalbard by  
lidar

J. Höffner et al.

Title Page

Abstract

Introduction

Conclusions

References

Tables

Figures

◀

▶

◀

▶

Back

Close

Full Screen / Esc

Print Version

Interactive Discussion

© EGU 2003

at two wavelengths is called “color ratio” and depends strongly on the particle mode radius  $r_m$  and on the size distribution. We assume a lognormal size distribution of spherical ice particles with  $r_m=40$  nm and a width of  $\sigma=1.4$ . We then arrive at color ratios of 3.2 and 7.3 for 532 nm/770 nm and 374 nm/770 nm, respectively. These ratios need to be applied for the comparison of our results with the R/M/R-lidar at ALOMAR and the Fe lidar at the South pole (see later). Taking into account this color ratio the ALOMAR value of  $\beta_{\max}=9.6$  (see above) corresponds to a  $\beta_{\max}$  of  $3.0 \cdot 10^{-10}$ /m/sr at 770 nm which is slightly but not significantly less compared to the Spitsbergen mean of  $\beta_{\max}=3.9 \cdot 10^{-10}$ /m/sr. We note that the color ratio varies substantially (from approximately 2.5 – 4.5) if other particle radii and widths are assumed. Therefore we conclude, that the brightness of the NLCs at ALOMAR and at Spitsbergen do not deviate significantly.

In summary, the mean NLC characteristics at two sites separated by almost 10 degrees in latitude, namely ALOMAR at 69° N and Spitsbergen at 78° N, are similar with respect to the peak altitude and the maximum volume backscatter coefficient, but differ significantly with respect to the occurrence frequency (larger at higher latitudes).

Chu et al. (2002) have recently presented NLC results obtained with their Fe Boltzmann lidar (374 nm) at the South Pole during the summer seasons of 1999/2000 and 2000/2001. Their coverage of the summer season is similar to our “lidar NLC period” (12 June to 12 August which corresponds to day numbers after solstice of –9 and 52, respectively) with a somewhat better coverage at the beginning of the NLC season. Taking mean values from both years the centroid altitude  $z_c$  at the South pole is approximately 85.0 km, i.e.  $\sim 1.3$  km higher compared to Spitsbergen. It should be noted, however, that  $z_c$  varies by approximately 1 km in the two years of observations at the South pole. We do not detect a decrease of NLC altitudes at the end of the season as stated in Chu et al. (2002). The NLC occurrence frequency at the South pole is somewhat smaller (67%) compared to Spitsbergen, but the difference is within the natural variability observed during our NLC season ( $\pm 28\%$ ).

The mean of the maximum backscatter coefficients  $\beta_{\max}$  at the South pole is

$37 \cdot 10^{-10} / \text{m/sr}$  at 374 nm. This corresponds to 5.1 at 770 nm taking the color ratio into account (see above). This is somewhat larger compared to the mean value at Spitsbergen (3.9). However, the difference is within the uncertainty of the color ratio caused by the unknown mean particle radius and size distribution.

## 5. Conclusion and outlook

We have presented the first lidar observations of noctilucent clouds at Spitsbergen and have discussed in detail the statistical properties of the NLC layer height, strength etc. We have compared these results with the thermal structure of the background field deduced from falling sphere measurements. The NLC altitudes and strengths at Spitsbergen are similar to ALOMAR ( $10^\circ$  further south) but NLCs are more frequent at Spitsbergen.

The comparison of FS temperatures and NLCs demonstrates that arguments derived from steady-state assumption may not be applicable when relating individual NLC properties to the background thermal field. On the other hand, the mean variation of the NLC appearance with height and season is in nice agreement with the climatological variation of the thermal structure in the upper mesosphere. This local agreement between the mean appearance of NLCs and the conditions set by the background atmosphere is important for comparison with models which take into account the time constant of hours for the generation of NLC particles and the corresponding large horizontal transport distances. We will continue and complete our measurements in the next years to explore inter-annual variability and improve the statistics of NLCs at very high latitudes.

*Acknowledgement.* We thank Mrs. Liu, Mr. Menzel, and Mr. Lautenbach for their assistance during the lidar operation. The support of the Svalsat team during installation and maintenance of the lidar in Spitsbergen is gratefully acknowledged. We thank A. Müllemann for the FS data processing and G. Baumgarten and M. Alpers for the color ratio calculations. J. Fiedler has kindly provided results for the comparison with the ALOMAR data. The ROMA project is

Title Page

Abstract

Introduction

Conclusions

References

Tables

Figures

◀

▶

◀

▶

Back

Close

Full Screen / Esc

Print Version

Interactive Discussion

## References

- Alpers, M., Gerding, M., Höffner, J., and von Zahn, U.: NLC particle properties from a five-color observation at 54°N, *J. Geophys. Res.*, 105, 12 235–12 240, 2000. [523](#)
- Baumgarten, G., Lübken, F. J., and Fricke, K. H.: First observation of one noctilucent cloud by a twin lidar in two different directions, *Ann. Geophys.*, 20, 1863–1868, 2002. [523](#)
- Berger, U. and von Zahn, U.: Icy particles in the summer mesopause region: 3-dim modeling of their environment and 2-dim modeling of their transport, *J. Geophys. Res.*, 107, doi: 10.1029/2001JA00316, 2002. [524](#), [532](#)
- Chu, X., Gardner, C., and Papen, G.: Lidar observations of polar mesospheric clouds at south pole: seasonal variations, *Geophys. Res. Lett.*, 28, 1203–1206, 2001. [523](#)
- Chu, X., Gardner, C., and Roble, R.: Lidar studies of interannual, seasonal and diurnal variations of polar mesospheric clouds at the South pole, *J. Geophys. Res.*, doi: 10.1029/2002JD002524, 2002. [534](#)
- Fiedler, F., Baumgarten, G., and von Cossart, G.: Noctilucent clouds above ALOMAR between 1997 and 2001: Occurrence and properties, *J. Geophys. Res.*, doi: 10.1029/JD002419, 2002. [528](#), [532](#), [533](#)
- Fleming, E. L., Chandra, S., Barnett, J. J., and Corney, M.: Zonal mean temperature, pressure, zonal wind, and geopotential height as functions of latitude, *Adv. Space Res.*, 10, 12, 11–59, 1990. [525](#)
- Fricke-Begemann, C., Alpers, M., and Höffner, J.: Daylight rejection with a new receiver for potassium resonance temperature lidars, *Opt. Lett.*, 27, 21, 1932–1934, 2002. [523](#), [524](#)
- Fritts, D. C., Isler, J. R., Thomas, G. E., and Andreassen, Ø.: Wave breaking signatures in noctilucent clouds, *Geophys. Res. Lett.*, 20, 2039–2042, 1993. [524](#)
- Gadsden, M.: The north-west Europe data on noctilucent clouds: a survey, *J. Atmos. Sol.-Terr. Phys.*, 60, 1163–1174, 1998. [523](#)
- Gadsden, M. and Schröder, W.: Noctilucent clouds, Springer-Verlag, New York, 1989. [523](#)
- Garcia, R. R.: Dynamics, radiation and photochemistry in the mesosphere: Implications for the formation of noctilucent clouds, *J. Geophys. Res.*, 94, 14,605–14,615, 1989. [524](#)

## NLCs at Svalbard by lidar

J. Höffner et al.

Title Page

Abstract

Introduction

Conclusions

References

Tables

Figures

◀

▶

◀

▶

Back

Close

Full Screen / Esc

Print Version

Interactive Discussion

© EGU 2003



---

**NLCs at Svalbard by  
lidar**J. Höffner et al.

---

[Title Page](#)[Abstract](#)[Introduction](#)[Conclusions](#)[References](#)[Tables](#)[Figures](#)[◀](#)[▶](#)[◀](#)[▶](#)[Back](#)[Close](#)[Full Screen / Esc](#)[Print Version](#)[Interactive Discussion](#)

© EGU 2003

- Hansen, G., Serwazi, M., and von Zahn, U.: First detection of a noctilucent cloud by lidar, *Geophys. Res. Lett.*, 16, 1445–1448, 1989. [523](#)
- Jensen, E. and Thomas, G. E.: A growth-sedimentation model of polar mesospheric clouds: Comparisons with SME measurements, *J. Geophys. Res.*, 93, 2461–2473, 1988. [524](#)
- 5 Jesse, O.: Die leuchtenden Nachtwolken, *Meteorol. Zeitung*, 6, 184–186, 1889. [523](#)
- Kirkwood, S. and Stebel, K.: The influence of planetary waves on noctilucent cloud occurrence over NW Europe, *J. Geophys. Res.*, (in print), 2003. [523](#)
- Klostermeyer, J.: A simple model of the ice particle size distribution in noctilucent clouds, *J. Geophys. Res.*, 103, 28 743–28 752, 1998. [524](#)
- 10 Körner, U. and Sonnemann, G. R.: Global 3D-modeling of the water vapor concentration of the mesosphere/mesopause region and implications with respect to the NLC region, *J. Geophys. Res.*, 106, 9639–9651, 2001. [530](#), [531](#), [542](#), [548](#)
- Lübken, F.-J.: Thermal structure of the Arctic summer mesosphere, *J. Geophys. Res.*, 104, 9135–9149, 1999. [523](#)
- 15 Lübken, F.-J.: Nearly zero temperature trend in the polar summer mesosphere, *Geophys. Res. Lett.*, 27, 3603–3606, 2000. [523](#)
- Lübken, F.-J. and Müllemann, A.: First in-situ temperature measurements in the summer mesosphere at very high latitudes (78°N), *J. Geophys. Res.*, (in press), doi: 10.1029/2002JD002414, 2003. [522](#), [524](#), [527](#), [530](#), [532](#)
- 20 Lübken, F.-J., Hillert, W., Lehmacher, G., von Zahn, U., Bittner, M., Offermann, D., Schmidlin, F., Hauchecorne, A., Mourier, M., and Czechowsky, P.: Intercomparison of density and temperature profiles obtained by lidar, ionization gauges, falling spheres, datasondes, and radiosondes during the DYANA campaign, *J. Atmos. Terr. Phys.*, 56, 1969–1984, 1994. [526](#)
- Lübken, F.-J., Fricke, K.-H., and Langer, M.: Noctilucent clouds and the thermal structure near the Arctic mesopause, *J. Geophys. Res.*, 101, 9489–9508, 1996. [523](#)
- 25 Lübken, F.-J., Höffner, J., Fricke-Begemann, C., Müllemann, A., Zecha, M., and Röttger, J.: Mesospheric layers and temperatures at Spitsbergen, 78°N, in Proceedings of the “Mesospheric Clouds” meeting, edited by M. Gadsden, British Astronomical Association, Perth, Scotland, 2002. [524](#)
- 30 Rapp, M., Lübken, F.-J., Müllemann, A., Thomas, G. E., and Jensen, E. J.: Small scale temperature variations in the vicinity of NLC: Experimental and model results, *J. Geophys. Res.*, 107, doi: 10.1029/2001JD001241, 2002. [524](#), [531](#), [532](#)
- Schmidlin, F. J.: The inflatable sphere: A technique for the accurate measurement of middle

---

**NLCs at Svalbard by  
lidar**J. Höffner et al.

---

[Title Page](#)[Abstract](#)[Introduction](#)[Conclusions](#)[References](#)[Tables](#)[Figures](#)[◀](#)[▶](#)[◀](#)[▶](#)[Back](#)[Close](#)[Full Screen / Esc](#)[Print Version](#)[Interactive Discussion](#)

© EGU 2003

atmosphere temperatures, *J. Geophys. Res.*, 96, 22,673–22,682, 1991. [526](#)

Thayer, J., Rapp, M., Gerrard, A., Gudmundsson, E., and Kane, T.: Gravity Wave Influences on Arctic Mesospheric Clouds as Determined by the Sondrestrom, Greenland, Rayleigh Lidar, *J. Geophys. Res.*, doi: 10.1029/2002JD002363, 2002. [523](#)

5 Thomas, G. E., Olivero, J. J., Jensen, E. J., Schroeder, W., and Toon, O. B.: Relation between increasing methane and the presence of ice clouds at the mesopause, *Nature*, 338, 490–492, 1989. [523](#)

Thomas, G. E., McPeters, R. D., and Jensen, E. J.: Satellite observations of polar mesospheric clouds by the solar backscattered ultraviolet spectral radiometer: evidence of a solar cycle dependence, *J. Geophys. Res.*, 96, 927–939, 1991. [533](#)

10 von Cossart, G., Fiedler, J., and von Zahn, U.: Size distributions of NLC particles as determined from 3-color observations of NLC by ground-based lidar, *Geophys. Res. Lett.*, 26, 1513–1516, 1999. [523](#)

von Zahn, U. and Höffner, J.: Mesopause temperature profiling by potassium lidar, *Geophys. Res. Lett.*, 23, 141–144, 1996. [524](#)

15 von Zahn, U. and Meyer, W.: Mesopause temperatures in polar summer, *J. Geophys. Res.*, 94, 14 647–14 651, 1989. [523](#)

von Zahn, U., von Cossart, G., and Fiedler, J.: Tidal variations of noctilucent clouds measured at 69°N latitude by ground based lidar, *Geophys. Res. Lett.*, 25, 1289–1292, 1998. [523](#)

20 von Zahn, U., von Cossart, G., Fiedler, J., Fricke, K. H., Nelke, G., Baumgarten, G., Rees, D., Hauchecorne, A., and Adolfsen, K.: The ALOMAR Rayleigh/Mie/Raman lidar: Objectives, configuration, and performance, *Ann. Geophys.*, 18, 815–833, 2000.

[532](#)

**Table 1.** Details of the NLCs observed by K lidar in Spitsbergen in the summer of 2001 (continued on following page)

dd	mo	obs-h	NLC-h	%	z-NLC	z-top	z-bot	BSC
12	6	3.14	1.23	39	84.1	84.8	83.1	2.1
14	6	1.51	0.43	28	83.4	84.2	82.7	0.9
15	6	0.83	0.00	0	—	—	—	—
17	6	2.82	0.00	0	—	—	—	—
18	6	11.63	11.54	99	83.6	85.1	82.7	3.7
25	6	0.59	0.59	100	86.1	87.3	84.7	3.2
26	6	8.00	7.03	88	83.3	84.5	82.6	5.6
28	6	2.14	0.58	27	82.5	82.8	82.3	2.3
29	6	0.98	0.93	94	84.2	84.8	83.6	1.4
3	7	0.97	0.97	100	84.8	87.3	82.6	2.3
4	7	13.83	10.76	78	83.7	85.3	82.7	4.5
12	7	7.07	7.07	100	83.7	85.6	82.3	10.9
15	7	5.75	2.84	49	83.5	85.1	82.8	4.3
16	7	0.76	0.00	0	—	—	—	—
23	7	4.94	2.90	59	83.3	84.9	82.4	5.5
24	7	7.52	7.11	95	85.2	86.2	84.3	1.2
26	7	17.87	14.22	80	83.2	84.8	82.2	2.6
27	7	2.51	2.20	88	83.3	84.2	82.4	1.0
31	7	14.59	12.86	88	83.2	84.6	82.2	3.3

dd=day; mo=month; obs-h=total observation hours; NLC-h=hours with NLC; %=occurrence rate; z-NLC=mean NLC peak altitude; z-top=top of NLC; z-bot=bottom of NLC; BSC=volume backscatter coefficient [ $10^{-10}$ /m/sr]

## NLCs at Svalbard by lidar

J. Höffner et al.

Title Page

Abstract

Introduction

Conclusions

References

Tables

Figures

◀

▶

◀

▶

Back

Close

Full Screen / Esc

Print Version

Interactive Discussion

## NLCs at Svalbard by lidar

J. Höffner et al.

**Table 1.** Continued

dd	mo	obs-h	NLC-h	%	z-NLC	z-top	z-bot	BSC
1	8	0.46	0.46	100	83.4	84.1	82.8	3.8
2	8	3.07	1.30	42	81.6	82.4	80.8	6.2
3	8	9.66	9.66	100	83.8	86.1	82.6	2.5
5	8	2.02	2.02	100	84.1	85.9	82.0	1.3
6	8	23.19	16.53	71	83.5	84.9	82.3	4.1
7	8	21.81	14.25	65	83.6	85.3	82.3	4.1
8	8	13.81	11.60	84	83.2	84.7	82.0	4.1
9	8	0.41	0.41	100	83.6	85.7	82.6	8.1
11	8	1.88	1.85	98	83.1	84.8	82.1	1.8
12	8	0.76	0.76	100	83.6	84.9	83.2	1.2

dd=day; mo=month; obs-h=total observation hours; NLC-h=hours with NLC; %=occurrence rate; z-NLC=mean NLC peak altitude; z-top=top of NLC; z-bot=bottom of NLC; BSC=volume backscatter coefficient [ $10^{-10}$ /m/sr]

Title Page

Abstract

Introduction

Conclusions

References

Tables

Figures

◀

▶

◀

▶

Back

Close

Full Screen / Esc

Print Version

Interactive Discussion

© EGU 2003

---

**NLCs at Svalbard by  
lidar**

 J. Höffner et al.
 

---

**Table 2.** Simultaneous measurements by K lidar and falling spheres during ROMA, 2001

flight label	date, time (UT)	potassium lidar period dates and times (UT)	NLC
(ROFS03)	22 Jul. 12:20	22 Jul. 23:48 – 23 Jul. 19:47	yes
(ROFS05)	25 Jul. 10:00	25 Jul. 14:31 – 26 Jul. 14:37	yes
ROFS07	31 Jul. 09:00	30 Jul. 16:11 – 31 Jul. 12:00	yes
ROFS09	02 Aug. 18:00	02 Aug. 08:24 – 02 Aug. 21:45	yes
ROFS10	06 Aug. 09:38	05 Aug. 09:52 – 08 Aug. 01:54	yes
ROFS18	27 Aug. 10:45	26 Aug. 09:37 – 28 Aug. 02:00	no

The K lidar time period may include a few hours of data interruption due to bad weather. For ROFS03 and ROFS05 the K lidar measurements took place a few hours prior to launch.

[Title Page](#)
[Abstract](#)
[Introduction](#)
[Conclusions](#)
[References](#)
[Tables](#)
[Figures](#)
[◀](#)
[▶](#)
[◀](#)
[▶](#)
[Back](#)
[Close](#)
[Full Screen / Esc](#)
[Print Version](#)
[Interactive Discussion](#)

---

**NLCs at Svalbard by  
lidar**

 J. Höffner et al.
 

---

**Table 3.** Temperatures in the NLC layer

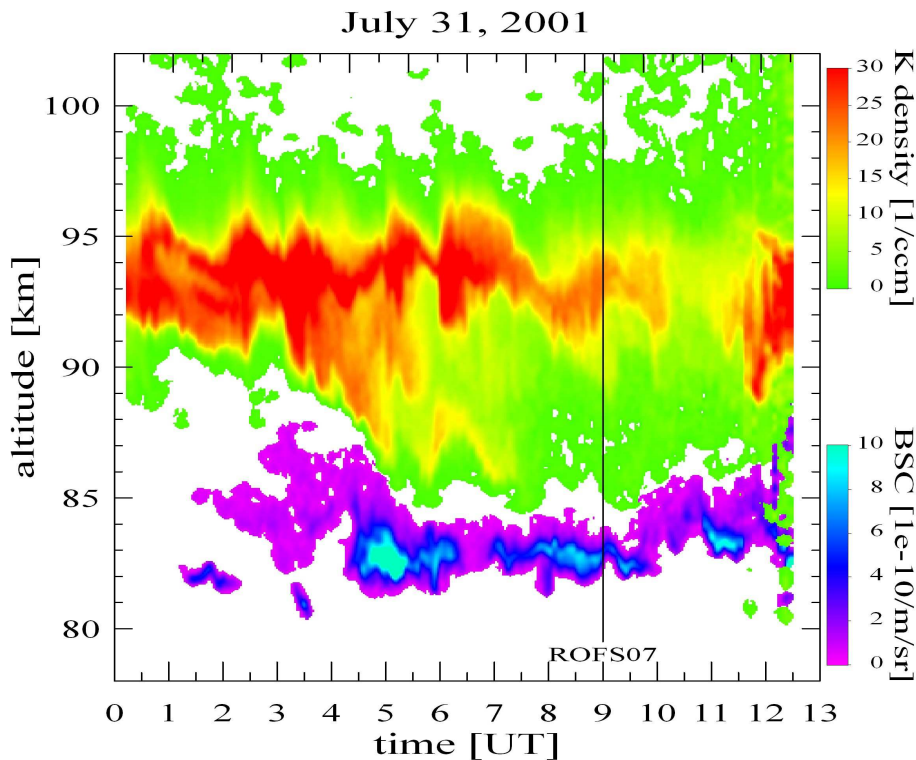
	ROFS07	ROFS09	ROFS10
$z_{top}$ [km]	84.5	87.3	84.5
temperature [K]	143	121	136
degree of saturation	1.5	1500	12
$z_{peak}$ [km]	82.5	84.5	82.6
$\beta_{max}$ [ $10^{-10}/m/sr$ ]	4.8	3.3	7.3
temperature [K]	149	127	144
degree of saturation	0.5	380	2.1
$z_{bottom}$ [km]	80.7	82.9	81.1
temperature [K]	157	137	152
degree of saturation	0.1	18	0.4

Water vapor mixing ratios were taken from [Körner and Sonnemann \(2001\)](#).

[Title Page](#)
[Abstract](#)
[Introduction](#)
[Conclusions](#)
[References](#)
[Tables](#)
[Figures](#)
[◀](#)
[▶](#)
[◀](#)
[▶](#)
[Back](#)
[Close](#)
[Full Screen / Esc](#)
[Print Version](#)
[Interactive Discussion](#)

NLCs at Svalbard by  
lidar

J. Höffner et al.



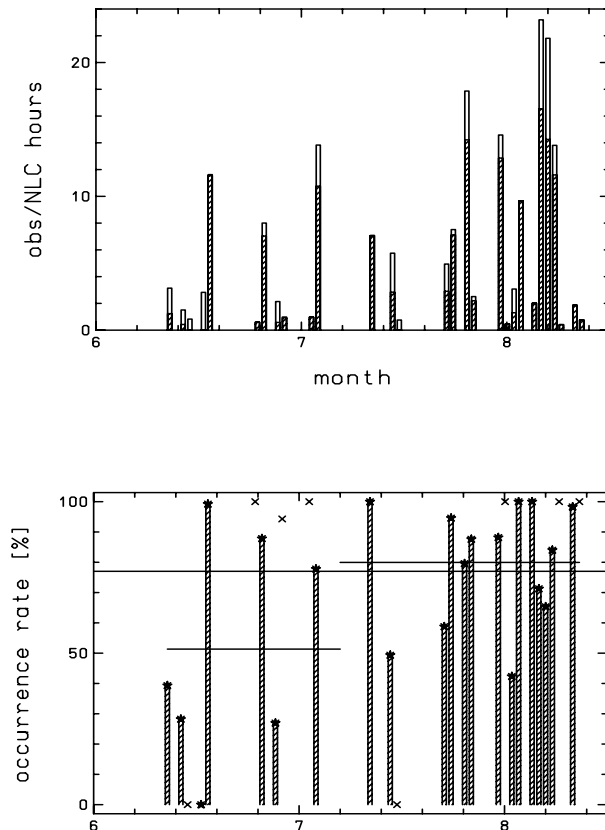
**Fig. 1.** Measurements of the K lidar on 31 July 2001. The potassium number density is shown in color contour from green to red, and the BSC from the NLC is shown in color contour from purple to blue (see color code at right margin). The vertical line indicates the launch time of the falling sphere ROFS07.

[Title Page](#)[Abstract](#)[Introduction](#)[Conclusions](#)[References](#)[Tables](#)[Figures](#)[◀](#)[▶](#)[◀](#)[▶](#)[Back](#)[Close](#)[Full Screen / Esc](#)[Print Version](#)[Interactive Discussion](#)

© EGU 2003

NLCs at Svalbard by  
lidar

J. Höffner et al.



**Fig. 2.** Daily mean observation statistics for NLC detection by the K lidar on Spitsbergen. Upper panel: total hours of observation and hours with NLCs (shaded). Lower panel: occurrence frequency of NLCs. Days with little observation time (less than 1 h) are marked by crosses only (no vertical bar). Ignoring these days, 3 mean values have been calculated (horizontal lines): one for the entire period and one each for the period 12 June – 4 July and 12 July – 12 August, respectively.

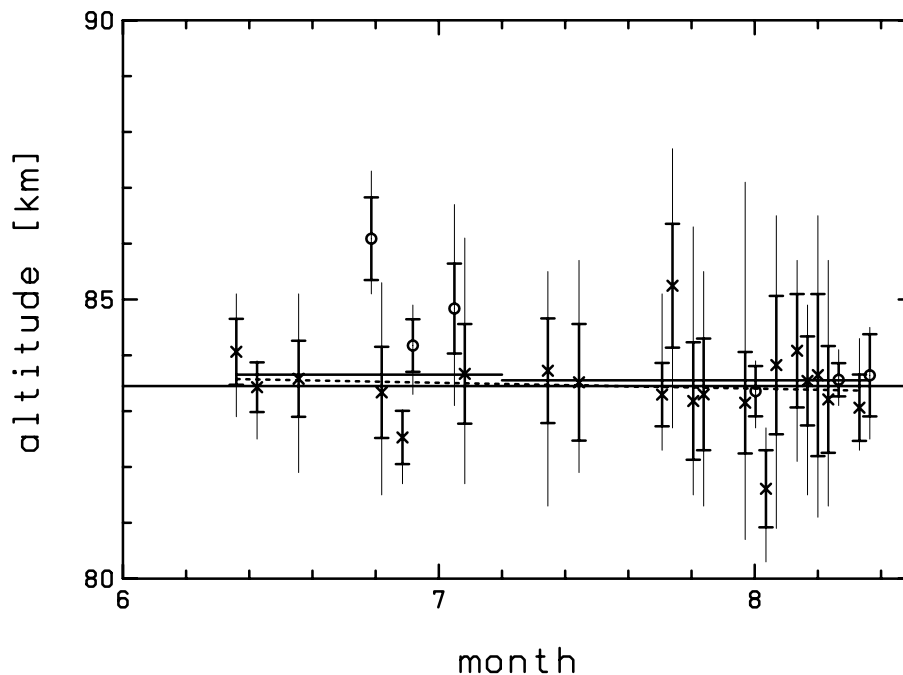
[Title Page](#)[Abstract](#)[Introduction](#)[Conclusions](#)[References](#)[Tables](#)[Figures](#)[◀](#)[▶](#)[◀](#)[▶](#)[Back](#)[Close](#)[Full Screen / Esc](#)[Print Version](#)[Interactive Discussion](#)

© EGU 2003



NLCs at Svalbard by  
lidar

J. Höffner et al.



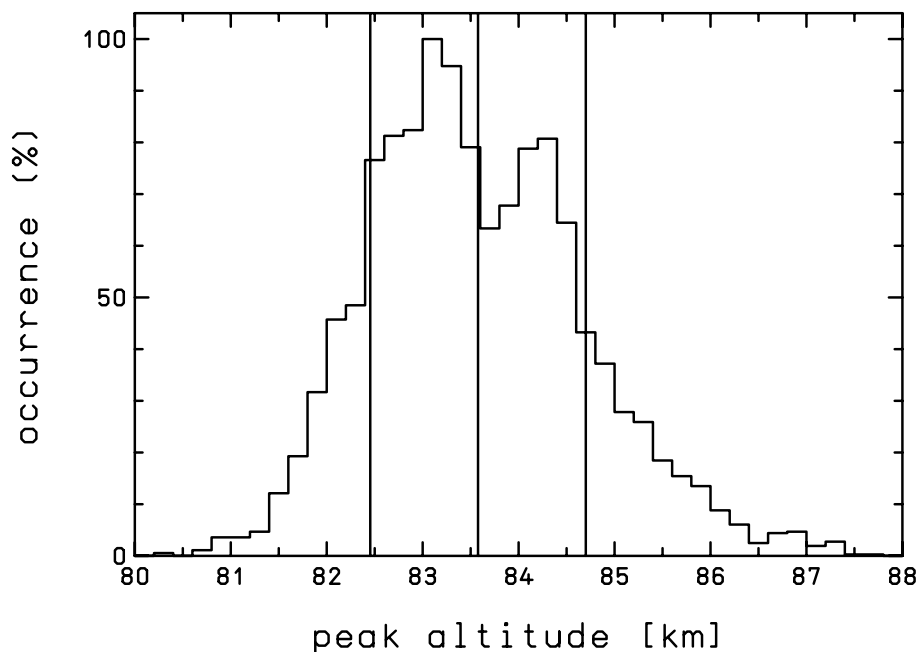
**Fig. 3.** Daily mean NLC peak altitudes versus month. The crosses indicate the mean altitude of maximum volume backscatter coefficient  $\beta_{\max}$  (circles if observation time is less than 1 h). The thick error bars present the RMS variability of  $\beta_{\max}$  and the thin vertical lines indicate the upper-most and lower-most appearance of the NLC layer during that particular day. The solid horizontal lines give the mean altitudes for the entire period and for the subsets described in the text, respectively. The dashed line is the straight line fitted to the  $\beta_{\max}$  values.

[Title Page](#)[Abstract](#)[Introduction](#)[Conclusions](#)[References](#)[Tables](#)[Figures](#)[◀](#)[▶](#)[◀](#)[▶](#)[Back](#)[Close](#)[Full Screen / Esc](#)[Print Version](#)[Interactive Discussion](#)

© EGU 2003

NLCs at Svalbard by  
lidar

J. Höffner et al.



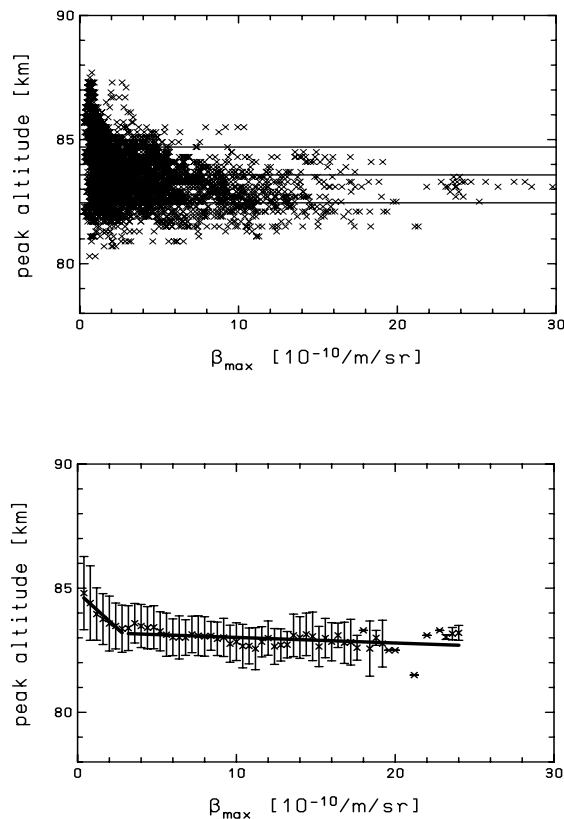
**Fig. 4.** Histogram of NLC peak altitudes normalized to 100% for maximum occurrence. The solid vertical lines indicate the mean and the RMS variability of the NLC peak altitudes, respectively.

[Title Page](#)[Abstract](#)[Introduction](#)[Conclusions](#)[References](#)[Tables](#)[Figures](#)[◀](#)[▶](#)[◀](#)[▶](#)[Back](#)[Close](#)[Full Screen / Esc](#)[Print Version](#)[Interactive Discussion](#)

© EGU 2003

NLCs at Svalbard by  
lidar

J. Höffner et al.

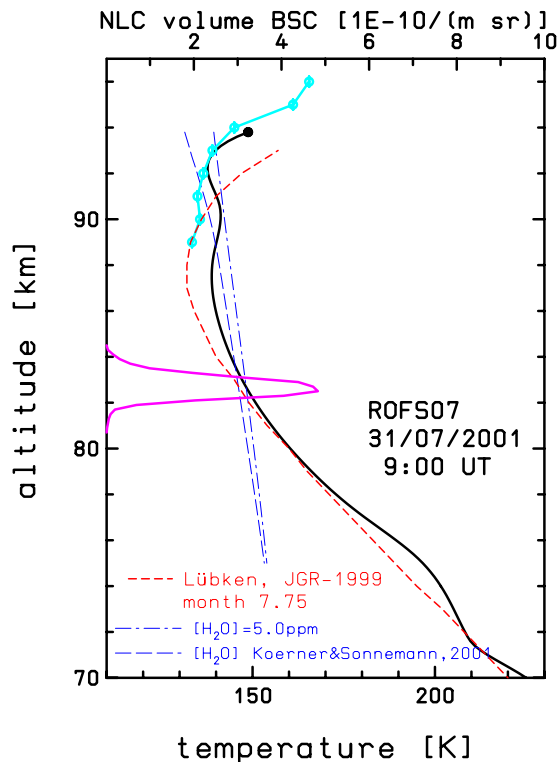


**Fig. 5.** Scatter plot of the maximum volume backscatter coefficient  $\beta_{\max}$  versus peak altitude for all individual profiles (upper panel). The solid horizontal lines indicate the mean and the RMS variability of the NLC peak altitudes. In the lower panel the peak altitudes are averaged in BSC bins of width  $0.4 \cdot 10^{-10} \text{ m/sr}$ . The vertical lines indicate the variability in each bin. Two straight lines have been fitted (thick solid lines in lower panel) namely for  $\beta_{\max}$  values smaller and larger than 3, respectively.

[Title Page](#)[Abstract](#)[Introduction](#)[Conclusions](#)[References](#)[Tables](#)[Figures](#)[◀](#)[▶](#)[◀](#)[▶](#)[Back](#)[Close](#)[Full Screen / Esc](#)[Print Version](#)[Interactive Discussion](#)

NLCs at Svalbard by  
lidar

J. Höffner et al.



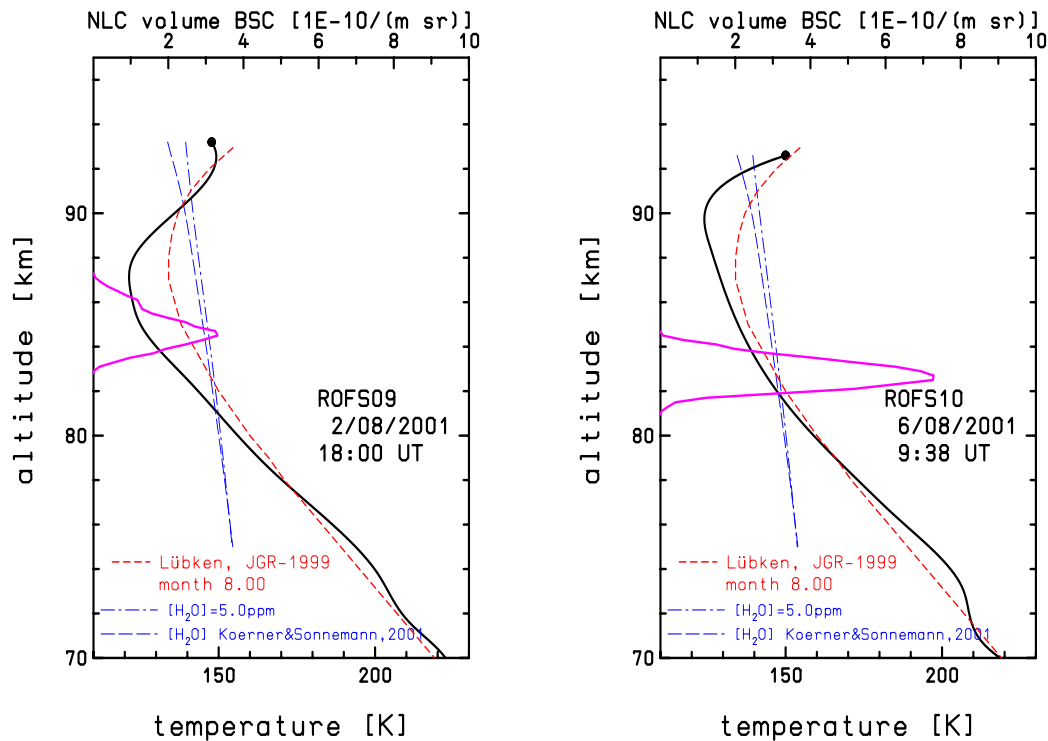
**Fig. 6.** Temperature profile from flight ROFS07 launched on 31 July at 09:00 UT (black line) and the NLC volume BSC averaged for  $\pm 1$  h around the rocket launch (purple line; upper abscissa). The two blue dashed lines indicate frost point temperatures  $T_{\text{frost}}$  using model water vapor mixing ratios from [Körner and Sonnemann \(2001\)](#) and a mixing ratio of 5 ppmv independent of altitude, respectively. The light blue line shows the temperature profile from the K lidar (see text for more details). For comparison the profile from FJL-JGR99 for  $69^\circ\text{N}$  is presented (red dashed line).

[Title Page](#)[Abstract](#)[Introduction](#)[Conclusions](#)[References](#)[Tables](#)[Figures](#)[◀](#)[▶](#)[◀](#)[▶](#)[Back](#)[Close](#)[Full Screen / Esc](#)[Print Version](#)[Interactive Discussion](#)

© EGU 2003

NLCs at Svalbard by  
lidar

J. Höffner et al.



**Fig. 7.** Same as Fig. 6 but for flights ROFS09 (left panel) and ROFS10 (right panel). The launch dates and times are given in the plots.

Title Page

Abstract

Introduction

Conclusions

References

Tables

Figures

◀

▶

◀

▶

Back

Close

Full Screen / Esc

Print Version

Interactive Discussion